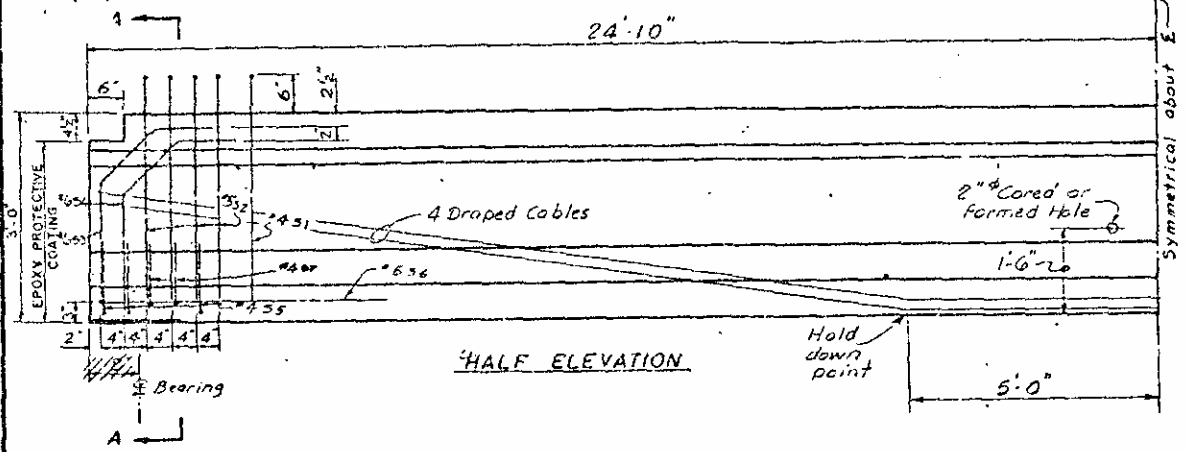
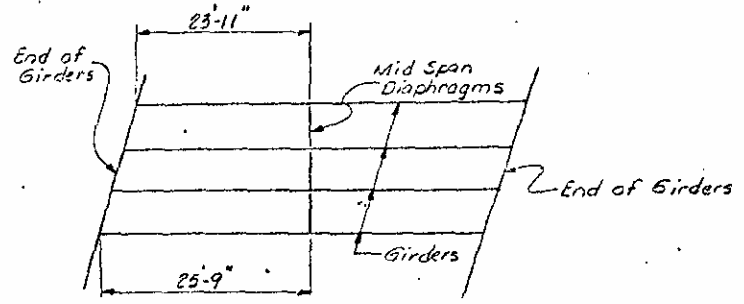


24'-10"					
1'-10"	11'	3'-5 1/2"	4'-5 1/2"	3'-5 1/2"	4'-5 1/2"
		= 2'-9"	= 3'-8"	= 4'-9"	= 3'-0"
5, 2	5, 1	2, 5	2, 5, 2	5, 1, 2	5, 1, 2

HALF PLAN



HALF ELEVATION



TIE ROD LOCATIONS

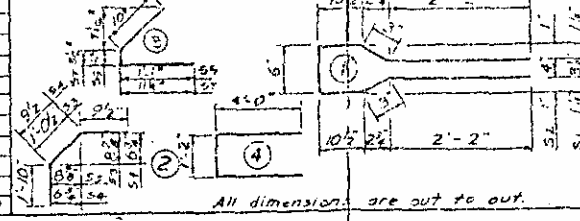
Camber (Girder alone in place) ----- 3/16"
 Deflection due to superimposed D.L. * ----- 3/16"
 Final Deflection ----- 3/16"

* Includes future wearing surface
DEAD LOAD DEFLECTIONS

REINFORCING STEEL FOR ONE GIRDER

Bar No.	Size	Type	Length	Weight
36	#3	1	7'-1"	10.7
37	#4	1	7'-1"	5.9
38	#5	1	7'-1"	2.2
39	#6	2	3'-9"	2.1
40	#6	2	3'-5"	1.9
41	#4	3	2'-4"	2.8
42	#6	4	9'-2"	1.1
43	#4	3	2'-1"	1.1
				26.7

BAR TYPES



All dimensions are out to out.

NOTES

THE CONTRACTOR, AT HIS OPTION, MAY USE 1/2" STRAND IN LIEU OF 7/8" STRAND DESIGN AND DETAIL PLANS USING 7/8" STRAND MUST BE SUBMITTED TO THE UNIT HEAD-11-13341-11-13341 UNIT FOR APPROVAL. ANY ADDITIONAL COST DUE TO USE OF 1/2" STRAND WILL BE PAID FOR BY THE CONTRACTOR.

ELASTOMER IN ALL BEARINGS SHALL HAVE A GRADE 60 ENGINEER HARDSHIP - SEE SPECIAL PROVISIONS.

STEEL PLATES IN LAMINATED BEARINGS SHALL CONFORM TO ASTM-A-36.

WHEN USED ON 90° SKREW-NOTCH IN TOP FLANGE OF GIRDER MAY BE OMITTED.

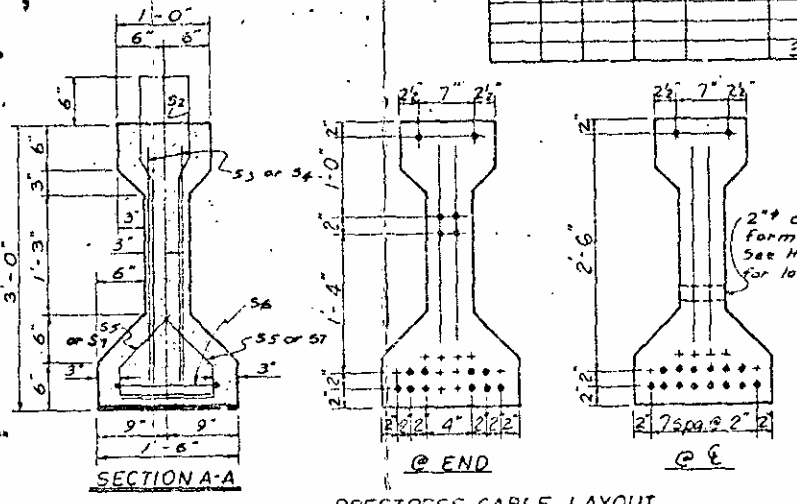
All prestressing strands shall be 7/8" 7-wire stress relieved Grade 270 cables in accordance with the Specifications.

APPLY EPOXY PROTECTIVE COATING TO END OF GIRDER SURFACES FOR EPOXY PROTECTIVE COATING. SEE SPECIAL PROVISIONS.

EMBEDDED PLATE B-1 TO BE GALVANIZED.

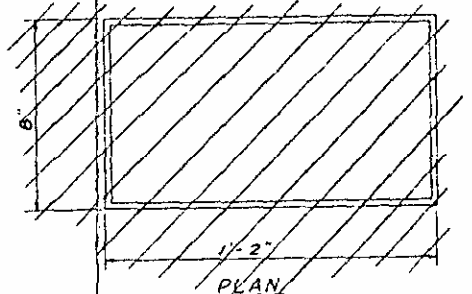
SIZE GRADE AREA, ULTIMATE STR. APPLIED PRESTRESS

1/2" 270	0.15"	31,000 Lbs. per cable	21,700 Lbs. per cable
----------	-------	-----------------------	-----------------------



PRESTRESS CABLE LAYOUT

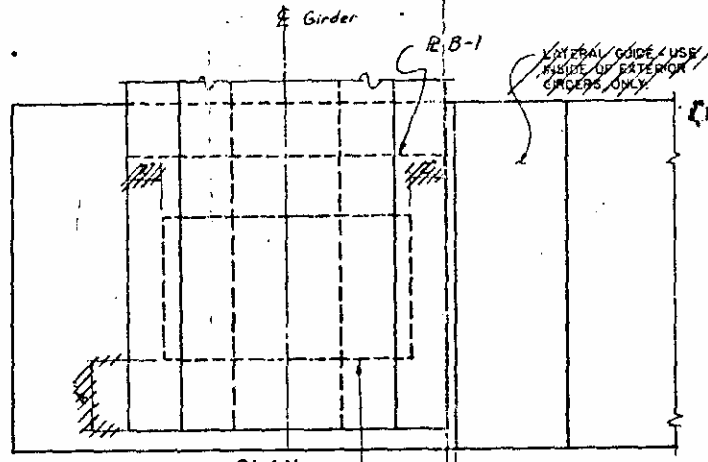
1/2" TIE ROD
 Tie Rod Assembly shall be A.S.T.M. A36 grade structural steel.



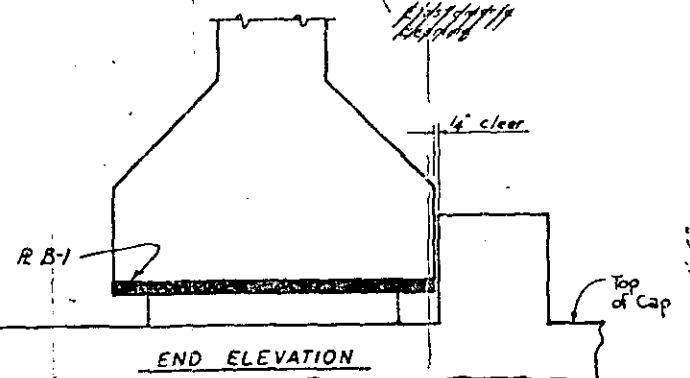
TYPICAL SECTION

ELASTOMERIC BEARINGS

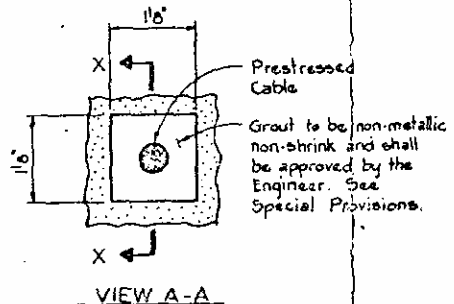
BEAM GRADE (%)	T (inches)	BEARING TYPES
0.00 - 1.00	1 1/8"	P-1
1.00 - 2.25	1 3/8"	P-2
2.25 - 3.50	1 7/8"	P-3
3.50 - 5.50	2 1/8"	P-4



PLAN

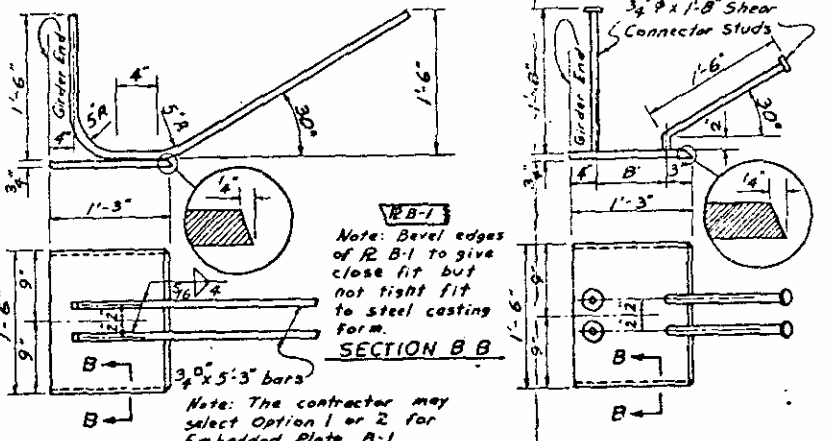


END ELEVATION



VIEW A-A
 1 1/8" x 1 1/8" x 1 1/2" GROUTED RECESS

TYPICAL EACH END OF PRESTR. CABLE



Note: Bevel edges of R B-1 to give close fit but not tight fit to steel casting form.

Note: The contractor may select Option 1 or 2 for Embedded Plate B-1.

OPTION 1
 EMBEDDED PLATE B-1 (2 Required for each Girder)

QUANTITIES FOR ONE GIRDER

Reinforcing Steel Lbs.	5,000 p.s.i. Concrete Cu. Yds.	Grade 270 7/8" S.R. Cables No.
367	4.71	16

GIRDERS REQUIRED

No.	Length	Total Length
2	49'-8"	99'-4"

PROJECT No. 5,4631-498
 Robeson COUNTY
 STATION Br. 175-46-210

STATE OF NORTH CAROLINA
 DEPARTMENT OF TRANSPORTATION
 RALPH
 STANDARD
 36" PRESTRESSED
 CONCRETE GIRDER

JULY		1978	
REVISIONS			
NO.	BY	DATE	SHEET NO.
1			
2			
TOTAL SHEETS			1

STD. NO. PCGI

Revised 10-1-79 By: R.D.U. - dr. AGF
 Revised 12-18-78 By: R.D.U. - dr. G.B.H.
 Revised 7-15-78 By: R.E.L. - dr. R.R.U.

ASSEMBLED BY RCMartin DATE 7/11/59
 CHECKED BY [Signature] DATE [Date]
 DRAWN BY [Signature] DATE Feb. 1, 1978
 CHECKED BY Helen D. Underwood DATE Feb. 1, 1978