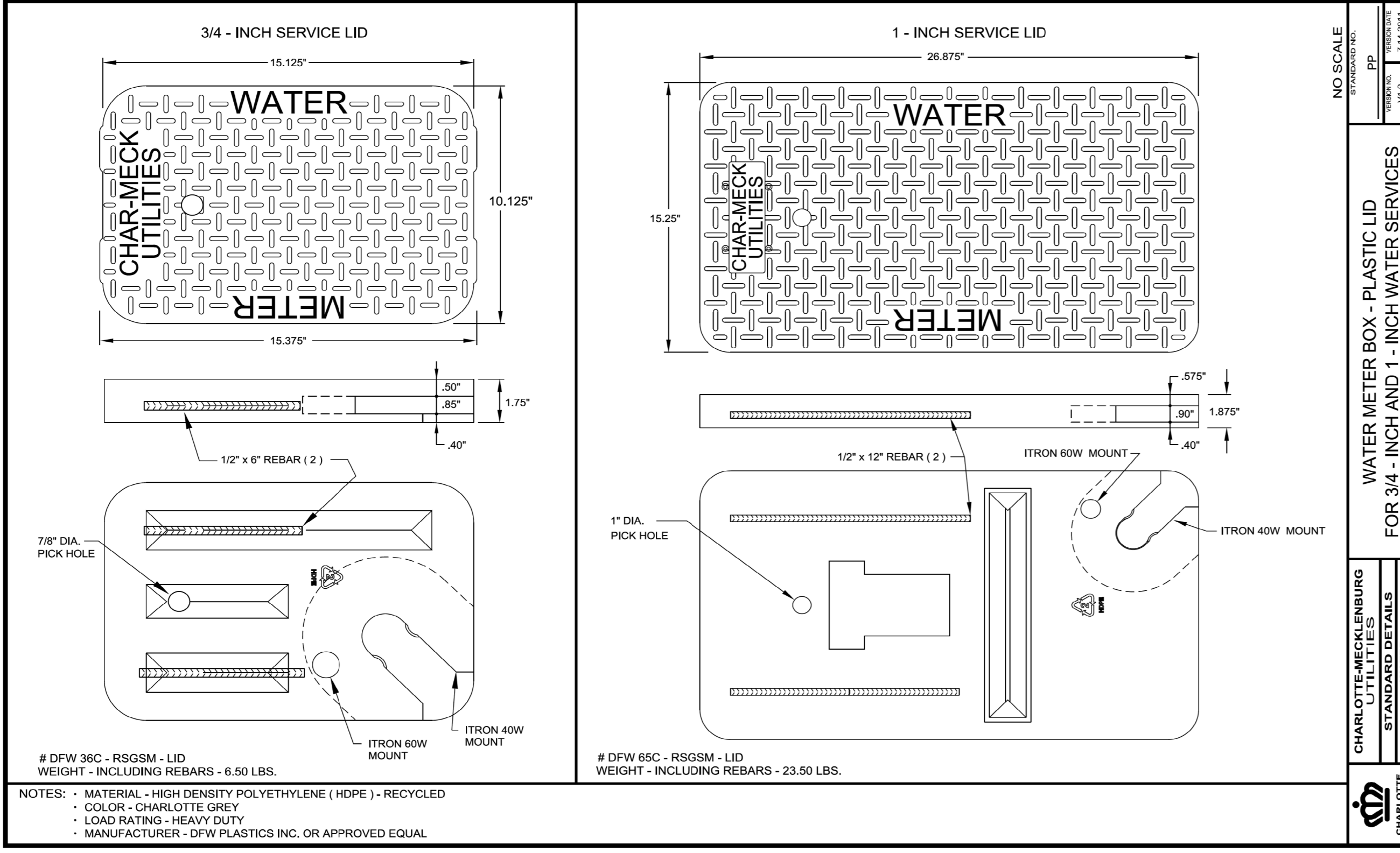
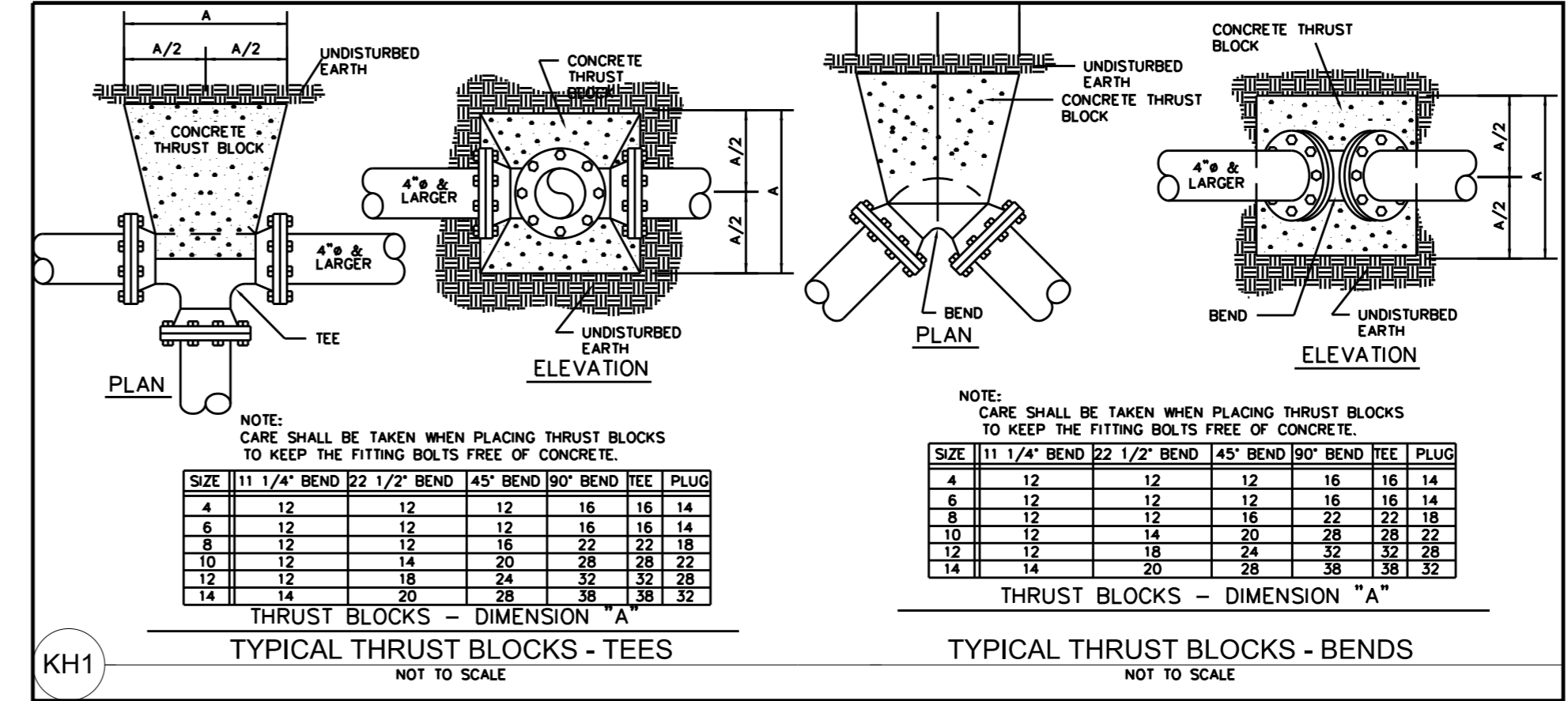
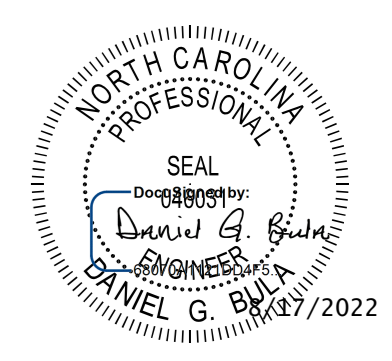


5/14/99

Kimley»Horn
 200 SOUTH TRYON ST, SUITE 200
 CHARLOTTE, N.C. 28202

PROJECT REFERENCE NO. 1-5973 SHEET NO. UC-3D
 DESIGNED BY: DGB
 DRAWN BY: SLG
 CHECKED BY: MAS
 APPROVED BY:
 REVISED:
 NORTH CAROLINA DEPARTMENT OF TRANSPORTATION
 UTILITIES ENGINEERING SEC. PHONE: (919)707-6690 FAX: (919)250-4151
 UTILITY CONSTRUCTION PLANS ONLY

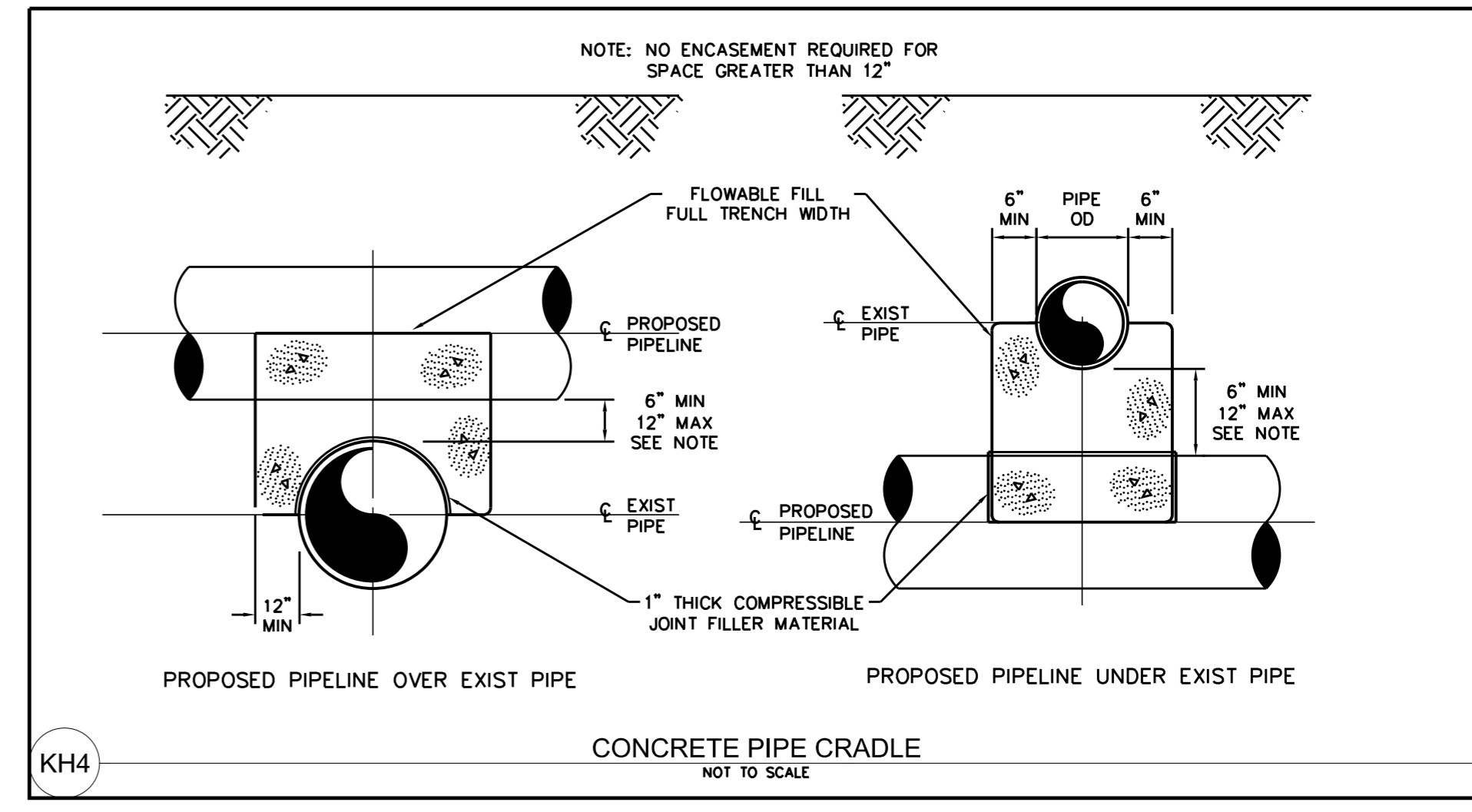
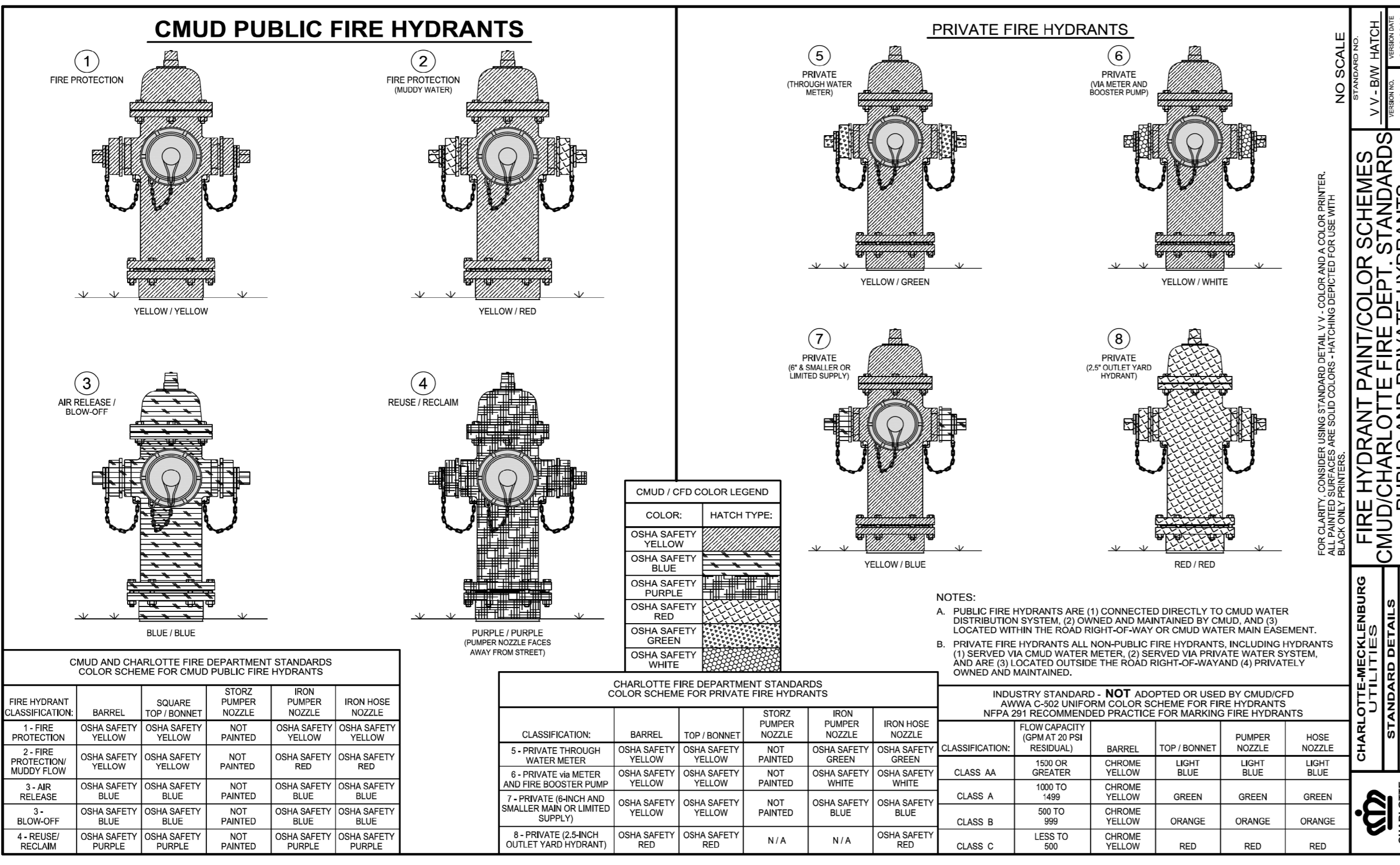
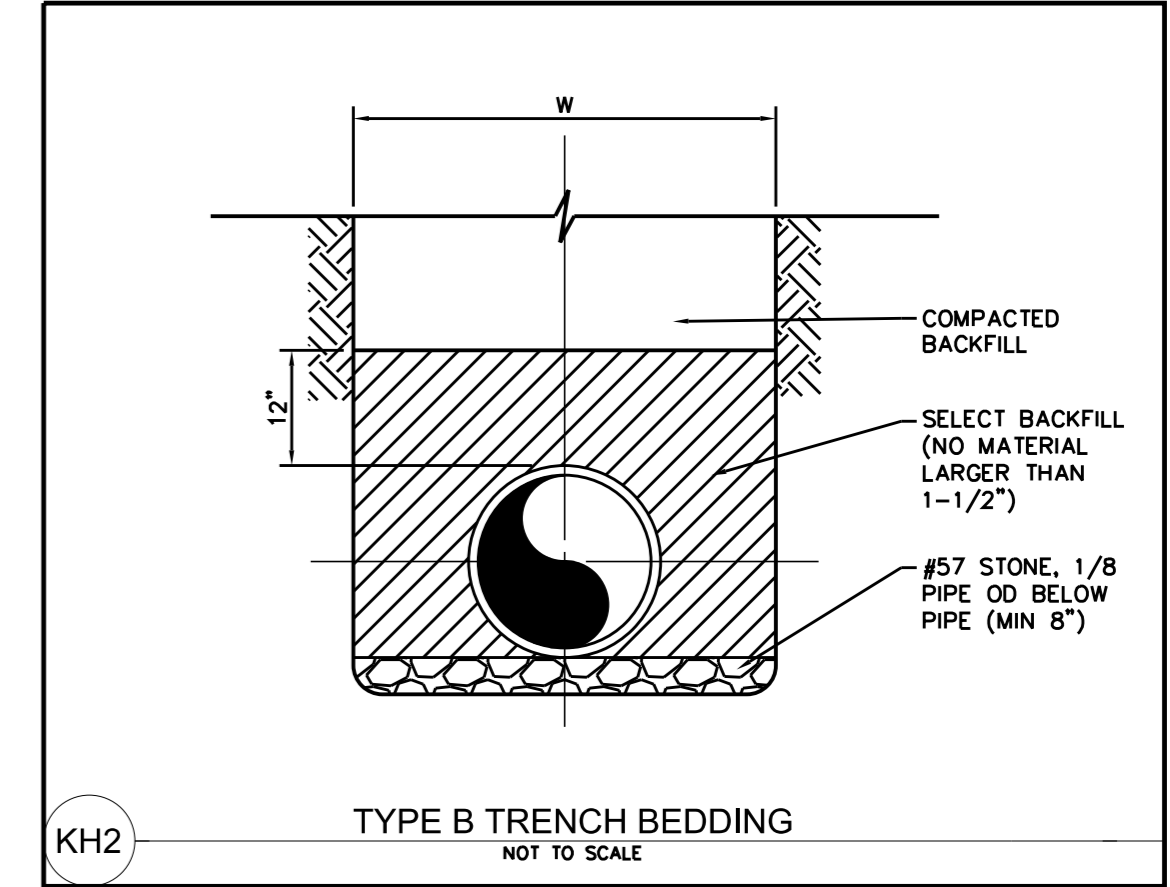


TRENCH EXCAVATION LIMITS

INTERNAL DIAMETER OF PIPE	WIDTH OF TRENCH	
	MAX	W=MIN
4'-6"	3'-9"	2'-0"
8'-10"	3'-9"	2'-2"
12"	3'-9"	O.D.+2"
14'-16"	4'-2"	O.D.+2"
18"	4'-4"	O.D.+2"
20"-21"	4'-8"	O.D.+2"
24"	4'-11"	O.D.+2"
27"	5'-9"	O.D.+2"
30"	6'-7"	O.D.+2"
36"	7'-4"	O.D.+2"
42"	8'-2"	O.D.+2"
48"	8'-9"	O.D.+2"
54"	9'-4"	O.D.+2"
60"	9'-10"	O.D.+2"
72"	11'-0"	O.D.+2"
78"	11'-8"	O.D.+2"
84"	12'-0"	O.D.+2"
90"	12'-8"	O.D.+2"
96"	13'-0"	O.D.+2"
108"	14'-0"	O.D.+2"

DEPTH OF CUT	S MAXIMUM PAVEMENT REPLACEMENT WIDTH
0'-6"	S=W+4'
>6'-8"	S=W+8'
>8'-10"	S=W+12'
>10'-12"	S=W+16'
>12'-14"	S=W+20'
>14'-16"	S=W+24'
>16'-18"	S=W+28'
>18"	S=W+32'

W = TRENCH WIDTH AT BOTTOM OF PIPE. TRENCH SIDE SLOPES SHALL BE IN ACCORDANCE WITH OSHA REQUIREMENTS.



REVISIONS

8/17/2022