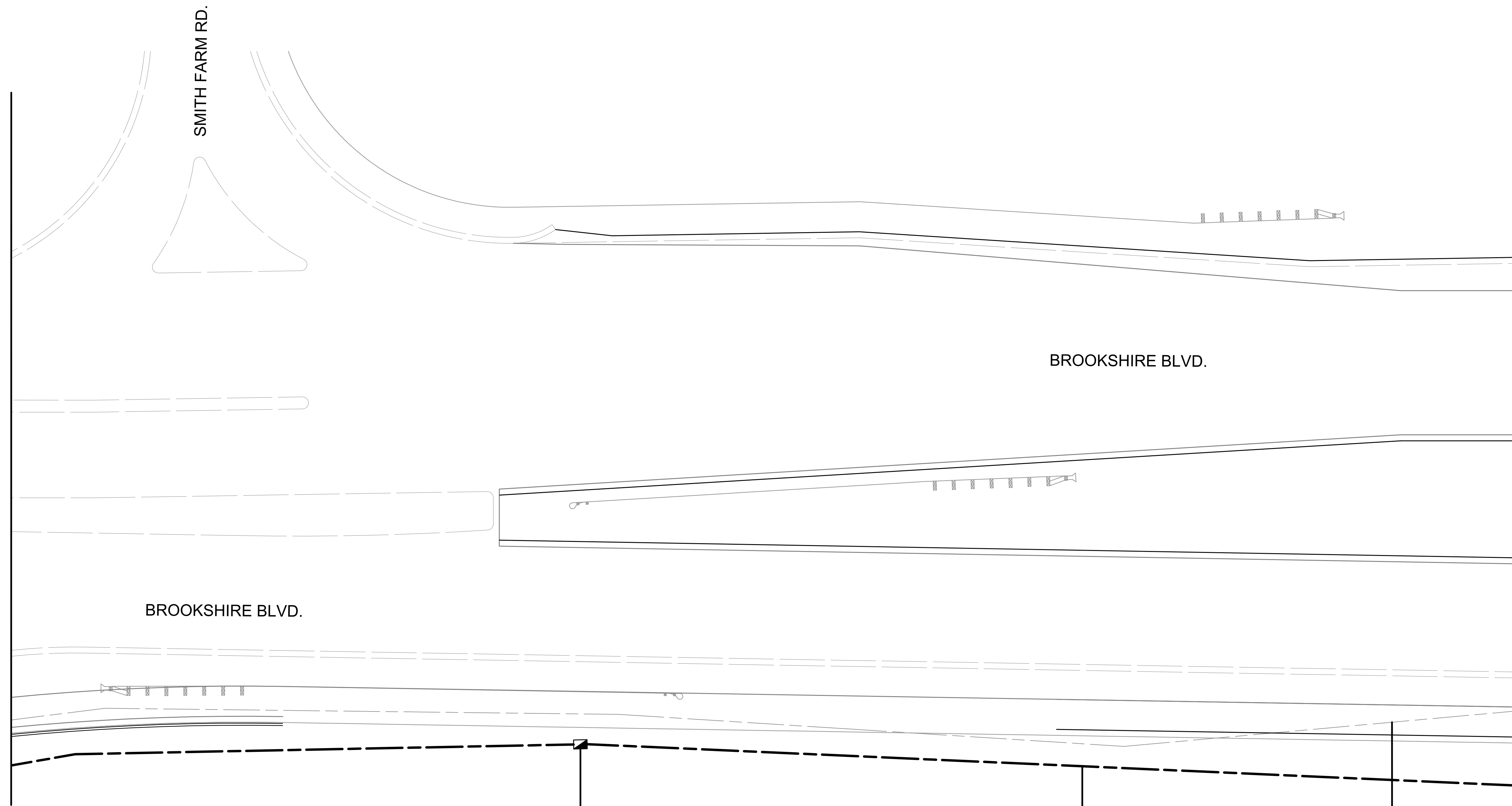


MATCH LINE SEE SHEET CR5

MATCH LINE SEE SHEET CR7

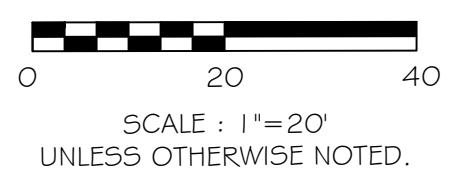


NEW HANDHOLE(HH4)
 (1) UH-2
 (1) 50' /UO(72)
 (1) UH-EBM
 UNDERGROUND HANDHOLE UNIT
 24X36X30 CDOT FIBER OPTIC
 COIL 50' OF 72 SMFO CABLE
 INSTALL ELECTRONIC BALL MARKER

TRENCH
 (1) 375' /UD (2-2 LW) TR
 (1) 375' /UO(72)
 INSTALL TWO 2" CONDUITS
 BETWEEN HH4 AND HH5
 INSTALL 72 SMFO CABLE IN NEW
 CONDUIT

**EXISTING UNDERGROUND
 CONDUIT TO BE ABANDONED**

- NOTES:**
1. CONTRACTOR IS RESPONSIBLE FOR LOCATING ALL UTILITIES PRIOR TO CONSTRUCTION.
 2. CONTRACTOR TO CUT EXISTING CONDUITS IN NEW AND EXISTING HANDHOLE FOR 6 INCH STUB UP.
 3. ALL UNUSED CONDUITS TO BE CAPPED AND TAPE SEALED. USED CONDUITS TO BE SEALED WITH SEALING COMPOUND (OR DUCT PLUGS).
 4. CONDUIT AND FIBER QUANTITIES ARE MEASURED AND LABELED FROM HANDHOLE TO HANDHOLE AND/OR POLE TO POLE AND NOT PER SHEET.
 5. CONTRACTOR TO COORDINATE WITH CDOT ENGINEER BEFORE EXISTING FIBER IS CUT TO DETERMINE OUTAGE TIMES.
 6. NEW 72 SMFO CABLE IS TO BE INSTALLED OUTSIDE OF CONSTRUCTION ZONE AND SPLICED INTO EXISTING 72 SMFO CABLE AT EX. HH#1(CR3A) AND EX. MH#2(CR3D).
 7. EXISTING SMFO CABLE BETWEEN EXISTING HH1 AND EX. MH#2 IS CUT AND REMOVED ONCE NEW CONDUIT AND FIBER HAS BEEN INSTALLED AND APPROVED BY ENGINEER.



PROJECT REFERENCE NO.

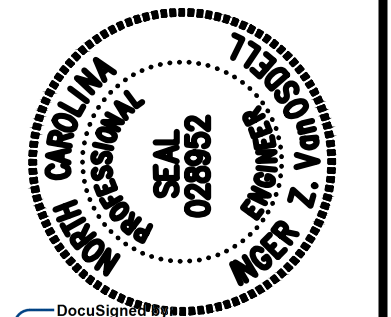
I-5973

SHEET NO.

SCP6

Plans Prepared By:
Kimley»»Horn
 NC License #1-0102
 421 Fayetteville Street, Suite 600
 Raleigh, NC 27601
 919-677-2000

NO.	DATE	BY	DESCRIPTION



Inger VanOrsell
 09/22/2022

**DOCUMENT NOT CONSIDERED
 FINAL UNLESS ALL
 SIGNATURES COMPLETED**

CDOT/ITS:##/##	SCALE	CAD FILE
JOB NO.	1"=20'	
MC Burke	PREPARED BY	IZ VanOrsell
PREPARED BY	CHECKED BY	DATE
IZ VanOrsell	09/20/21	
APPROVED BY		

**BROOKSHIRE BOULEVARD
 CHARLOTTE, NC**

**CABLE ROUTING
 PLANS**

SHEET
CR6
 OF
CR9