

ITEM #	DESCRIPTION		CR4	CR5	CR6	CR7	CR8	CR9	TOTAL
BM53CM	FIBER CURB MARKER ASSEMBLY UNIT	EA	0	0	0	2	0	4	6
BM71(DB)	ROCK DRILLING ADDER UNIT	LF	0	0	0	9	25	19	53
BM71(DBSR)	SOLID ROCK DRILLING ADDER UNIT	LF	0	0	0	9	25	19	53
BM71(TR)	ROCK EXCAVATING ADDER UNIT	LF	45	33	38	36	0	0	152
CHO-4(1)ST/LC	FIBER OPTIC JUMPER ASSEMBLY UNIT	EA	0	2	0	2	0	0	4
FOE(TRX)(ESU)CI(3200)	ETHERNET SWITCH UNIT/MODULE -CISCO	EA	0	1	0	1	0	0	2
FOE(TRX)(ESU)(SFP)(GLX-R)	ETHERNET SMALL FORM-FACTOR PLUGGABLE PORT	EA	0	2	0	2	0	0	4
HO-1	FIBER OPTIC SPLICING ASSEMBLY UNIT	EA	72	4	0	12	0	74	162
HO-EML	FIBER OPTICAL POWER LEVEL TEST ASSEMBLY UNIT	EA	0	2	0	2	0	0	4
HO-OTDR	FIBER OPTIC SPLICE TEST ASSEMBLY UNIT	EA	63	2	0	2	0	63	130
HUO(72) G	UNDERGROUND FIBER OPTIC CLOSURE ASSEMBLY UNIT	EA	0	1	0	1	0	0	2
UD(2-2 LW)HD	UNDERGROUND CONDUIT ASSEMBLY UNIT	LF	0	10	0	0	0	0	10
UD(2-2 LW)TR	UNDERGROUND CONDUIT ASSEMBLY UNIT	LF	445	325	375	355	0	0	1500
UD(2-2" LW)DB	UNDERGROUND CONDUIT ASSEMBLY UNIT	LF	0	0	0	0	500	0	0
UD(3-2 LW)DB(B)	UNDERGROUND CONDUIT ASSEMBLY UNIT	LF	0	0	0	170	0	370	540
UD-EX	PROOF EXISTING CONDUIT	LF	215	0	0	0	0	0	215
UD-RP	REPAIR EXISTING CONDUIT UNIT	EA	22	0	0	0	0	0	22
UH-2	UNDERGROUND HANDHOLE ASSEMBLY UNIT	EA	0	1	1	2	1	1	6
UH-EBM	ELECTRONIC BALL MARKER	EA	1	1	1	1	1	1	6
UO(6)PATCH PANEL/ML	FIBER OPTIC PATCH PANEL UNIT	EA	0	1	0	1	0	0	2
UO(6)FIBER/ML	UNDERGROUND FIBER OPTIC CABLE STUB UNIT	LF	0	65	0	90	0	0	155
UO(72)	UNDERGROUND FIBER OPTIC CABLE ASSEMBLY UNIT	LF	745	395	425	525	550	455	3190
(W)CC	ACCESS TO THE TRAFFIC SIGNAL CONTROLLER CABINET	EA	0	1	0	1	0	0	2
(W)HUO(T(6))	UNDERGROUND SPLICE CLOSURE REARRANGEMENT UNIT	EA	1	0	0	0	0	1	2
(W)UO(72)	REMOVE EXISTING FIBER CABLE FROM CONDUIT UNIT	LF	0	0	0	180	0	0	180
(W)UM	PLACING NEW CONDUIT OR CABLE IN EXISTING MANHOLE UNIT	EA	0	0	0	0	0	2	2
(W)UM-CB(2)	MANHOLE CONDUIT ENTRANCE UNIT	EA	0	0	0	0	0	2	2
(W)UH	PLACING NEW CONDUIT OR CABLE IN EXISTING HANDHOLE UNIT	EA	1	0	0	1	0	0	2

PROJECT REFERENCE NO.

I-5973

SHEET NO.

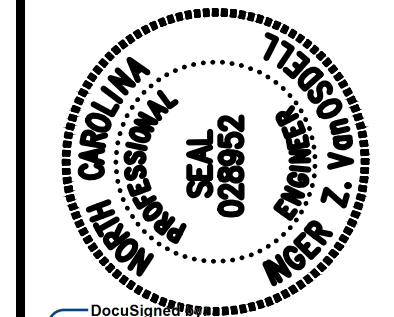
SCP3E

Plans Prepared By:

**Kimley»Horn**

NC License #1-0102  
421 Fayetteville Street, Suite 600  
Raleigh, NC 27601  
919-677-2000

NO. DATE BY DESCRIPTION



Inger VanOrsell  
09/23/2022

DOCUMENT NOT CONSIDERED FINAL UNLESS ALL SIGNATURES COMPLETED

CDOT/ITS ##-##-##	SCALE	1"=20'
JOB NO.	CAD FILE	
MC Burke PREPARED BY	IZ Vanosdell CHECKED BY	
IZ Vanosdell APPROVED BY	DATE	09/20/21

BROOKSHIRE BOULEVARD  
CHARLOTTE, NC

SHEET CR3E OF CR9  
TABULATION SHEET