

PROJECT REFERENCE NO.	SHEET NO.
1-5973	EC-7/CONST.7
R/W SHEET NO.	HYDRAULICS ENGINEER
ROADWAY ENGINEER	
DOCUMENT NOT CONSIDERED FINAL UNLESS ALL SIGNATURES COMPLETED	

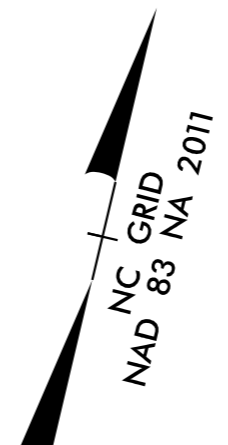
Kimley » Horn

200 S. TRYON ST. • CHARLOTTE, NC 28202

RIGHT-OF-WAY REV.
CONST. REV.

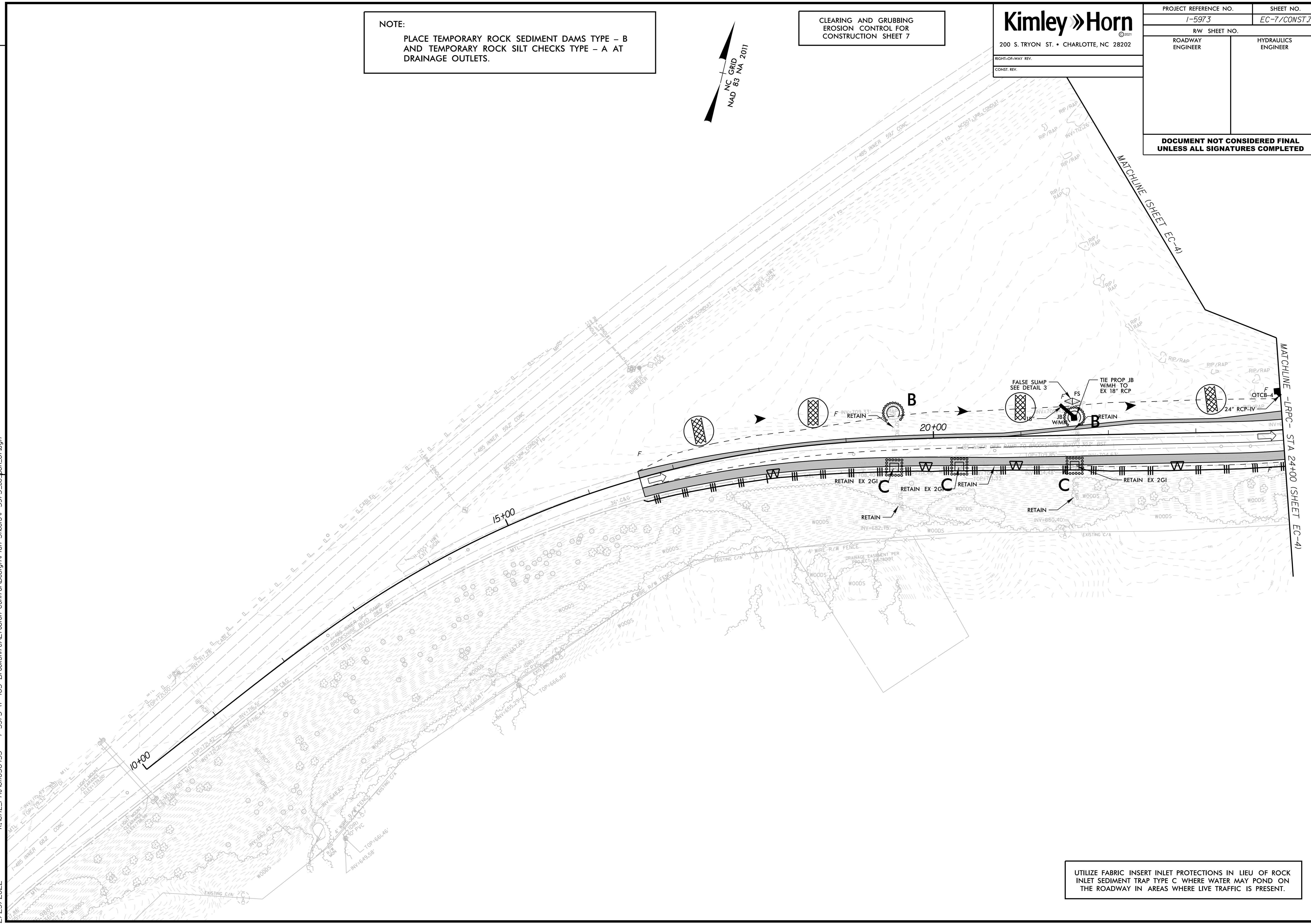
NOTE:
PLACE TEMPORARY ROCK SEDIMENT DAMS TYPE - B
AND TEMPORARY ROCK SILT CHECKS TYPE - A AT
DRAINAGE OUTLETS.

CLEARING AND GRUBBING
EROSION CONTROL FOR
CONSTRUCTION SHEET 7



REVISIONS

K:\CHL_PRR\01036453 - 1-5973 11-485 Brookshire Erosion Control\DesignPlan Sheets\1-5973.ec.psh_07.dgn



UTILIZE FABRIC INSERT INLET PROTECTIONS IN LIEU OF ROCK
INLET SEDIMENT TRAP TYPE C WHERE WATER MAY POND ON
THE ROADWAY IN AREAS WHERE LIVE TRAFFIC IS PRESENT.

2/23/2022