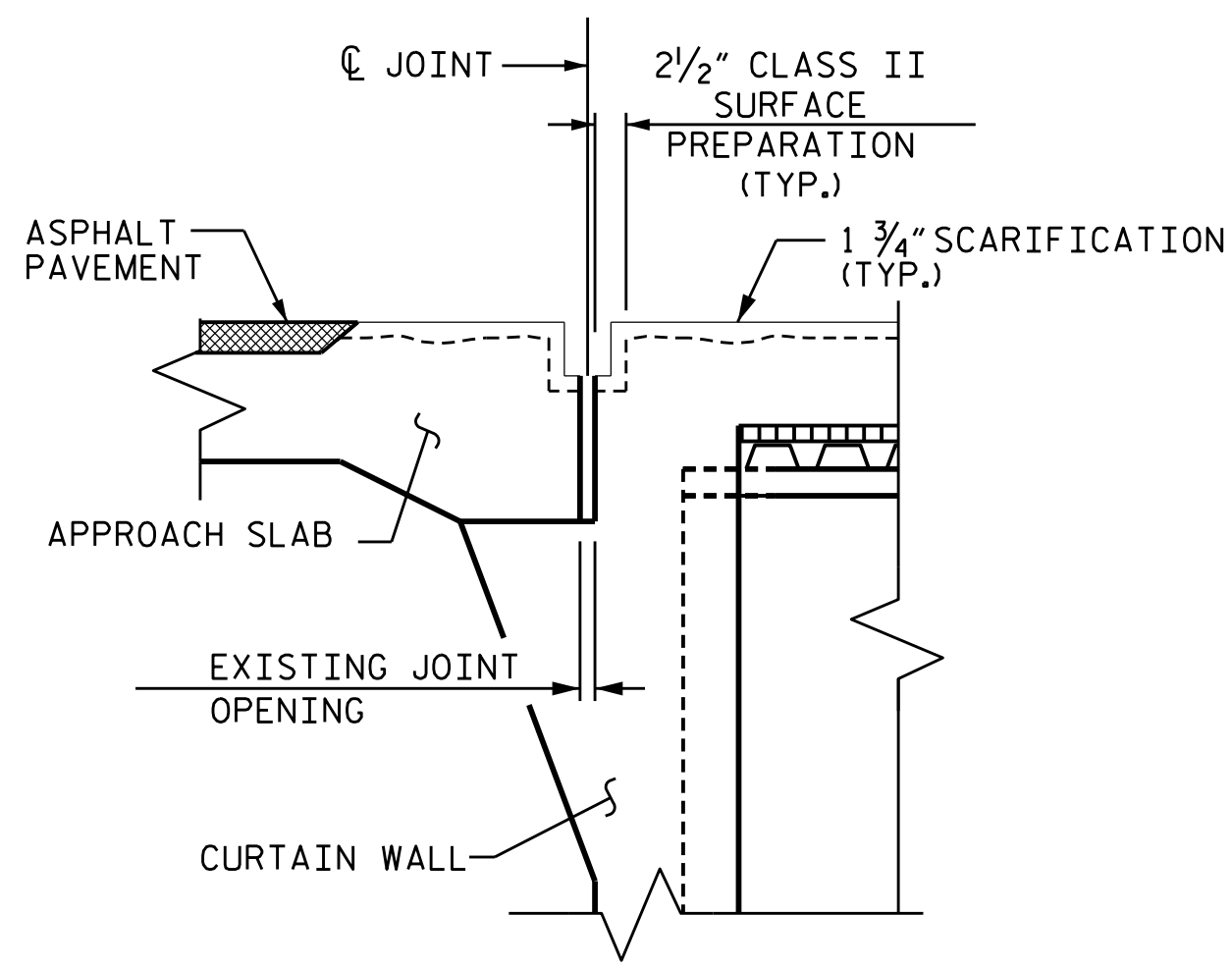
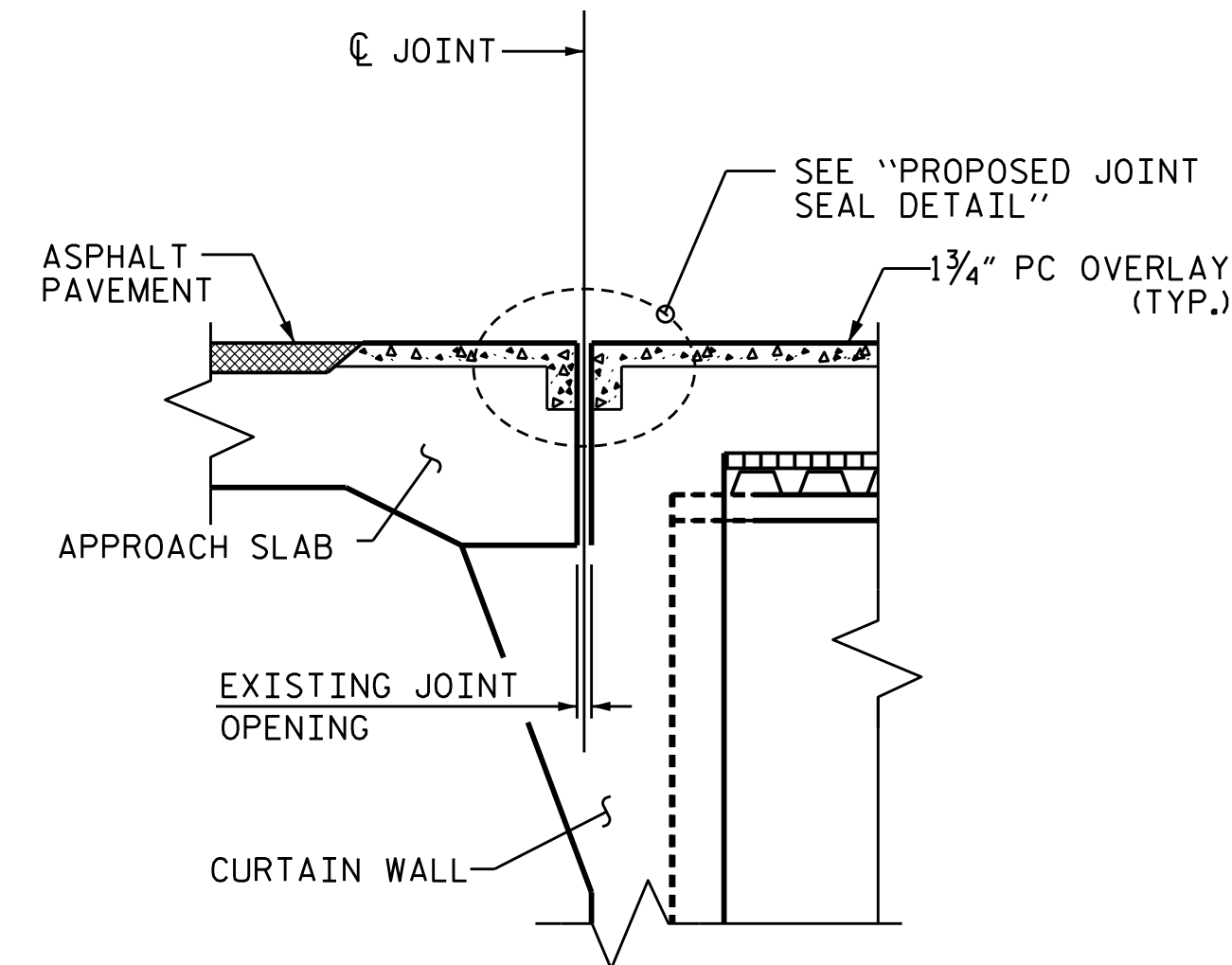


EXISTING JOINT



MINIMUM EXISTING JOINT DEMOLITION



PROPOSED PRE-SAWED JOINT

JOINT INSTALLATION SEQUENCE AT END BENTS

(SECTION A-A)

NOTES:

CONTRACTOR SHALL FIELD VERIFY THE EXISTING FORMED OPENING PRIOR TO OBTAINING JOINT MATERIAL. IF ACTUAL JOINT OPENINGS VARIES FROM THE OPENING INDICATED IN DETAIL MORE THAN 1/4" NOTIFY ENGINEER. REVISION TO THE JOINT SEAL SIZE MAY BE NECESSARY.

THE CONTRACTOR SHALL TAKE CARE DURING JOINT REHAB OPERATIONS NOT TO DROP ANY MATERIAL BELOW THE BRIDGE WITHOUT PROTECTIVE DEVICES BELOW TO CATCH THE MATERIAL. ANY MATERIAL THAT FALLS BELOW THE BRIDGE SHALL BE CONTAINED, REMOVED AND DISPOSED OF BY THE CONTRACTOR AT NO EXTRA COST TO THE DEPARTMENT. IF THE ENGINEER DETERMINES THAT THE PROTECTIVE DEVICES ARE NOT ADEQUATE OR NOT BEING EMPLOYED, THE WORK SHALL BE SUSPENDED UNTIL ADEQUATE PROTECTION IS PROVIDED.

UNLESS NOTED OTHERWISE RETAIN ALL EXISTING REINFORCING STEEL. CLEAN AND REPAIR AS NEEDED.

ALL EXPOSED ENDS OF CUT BARS SHALL BE COATED WITH EPOXY PRIOR TO THE NEW JOINT MATERIAL INSTALLATION.

THE CONTRACTOR WILL NOT BE PERMITTED TO FORM THE JOINTS IN LIEU OF SAWING THE JOINT.

FOR POURABLE SILICONE EXPANSION JOINT SEALS, SEE SPECIAL PROVISIONS.

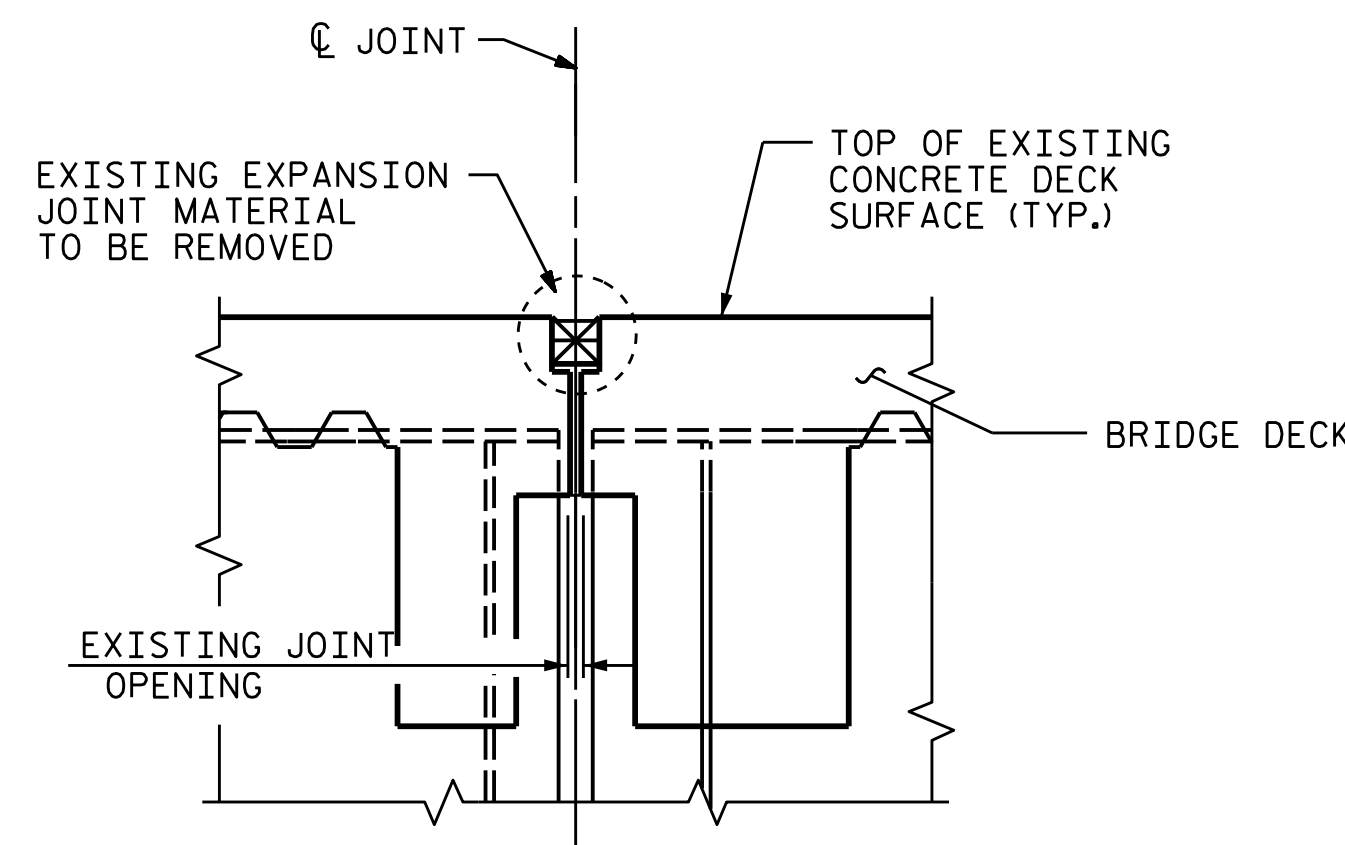
SILICONE JOINT SEALANT AND BACKER ROD SHALL BE INSTALLED AS PER MANUFACTURER'S RECOMMENDATION.

THE INSTALLATION OF JOINT SEAL SHALL BE WATERTIGHT.

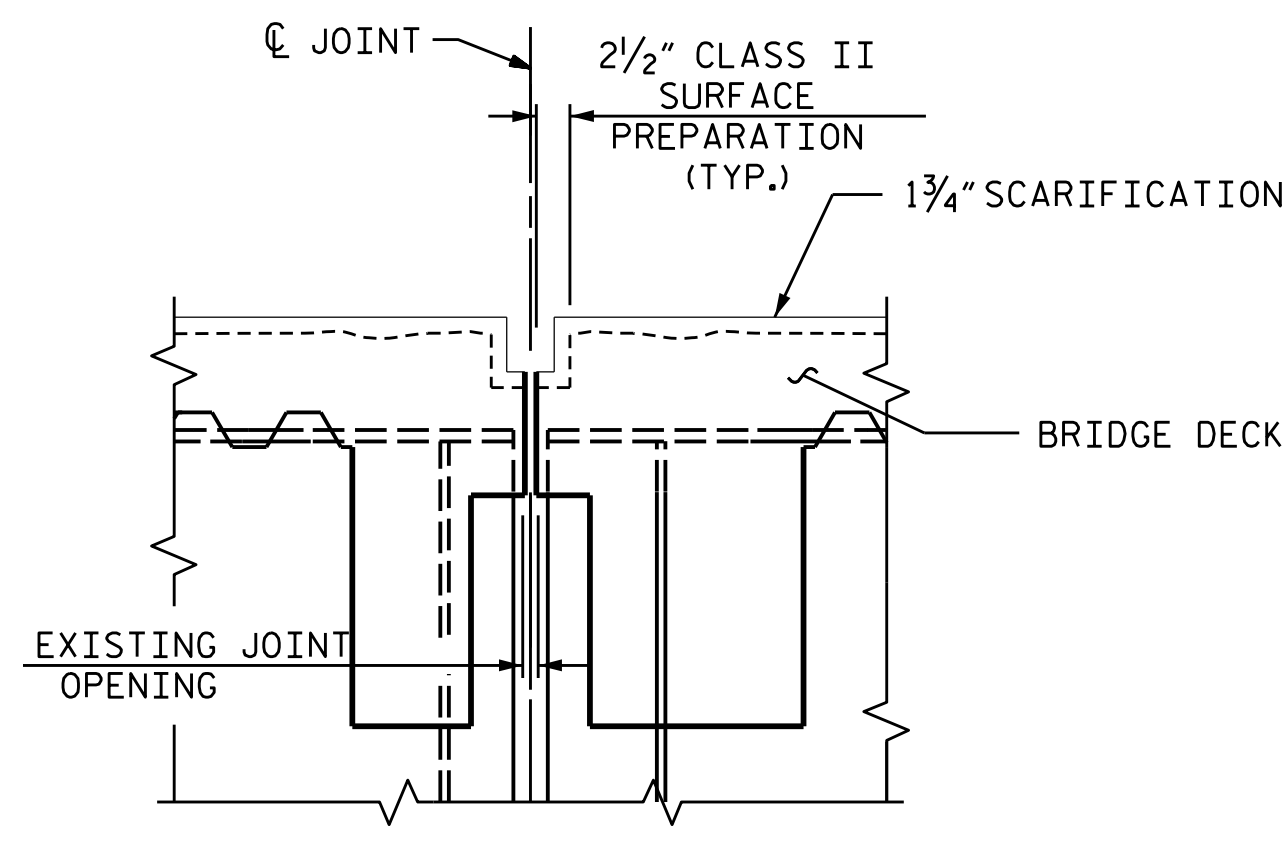
FINAL JOINT SEALS SHALL NOT BE INSTALLED UNTIL THE OVERLAY IS COMPLETE.

DURING JOINT INSTALLATION PROCEDURE, THE JOINT AND SURROUNDING AREA SHALL BE KEPT CLEAN AND FREE OF DEBRIS.

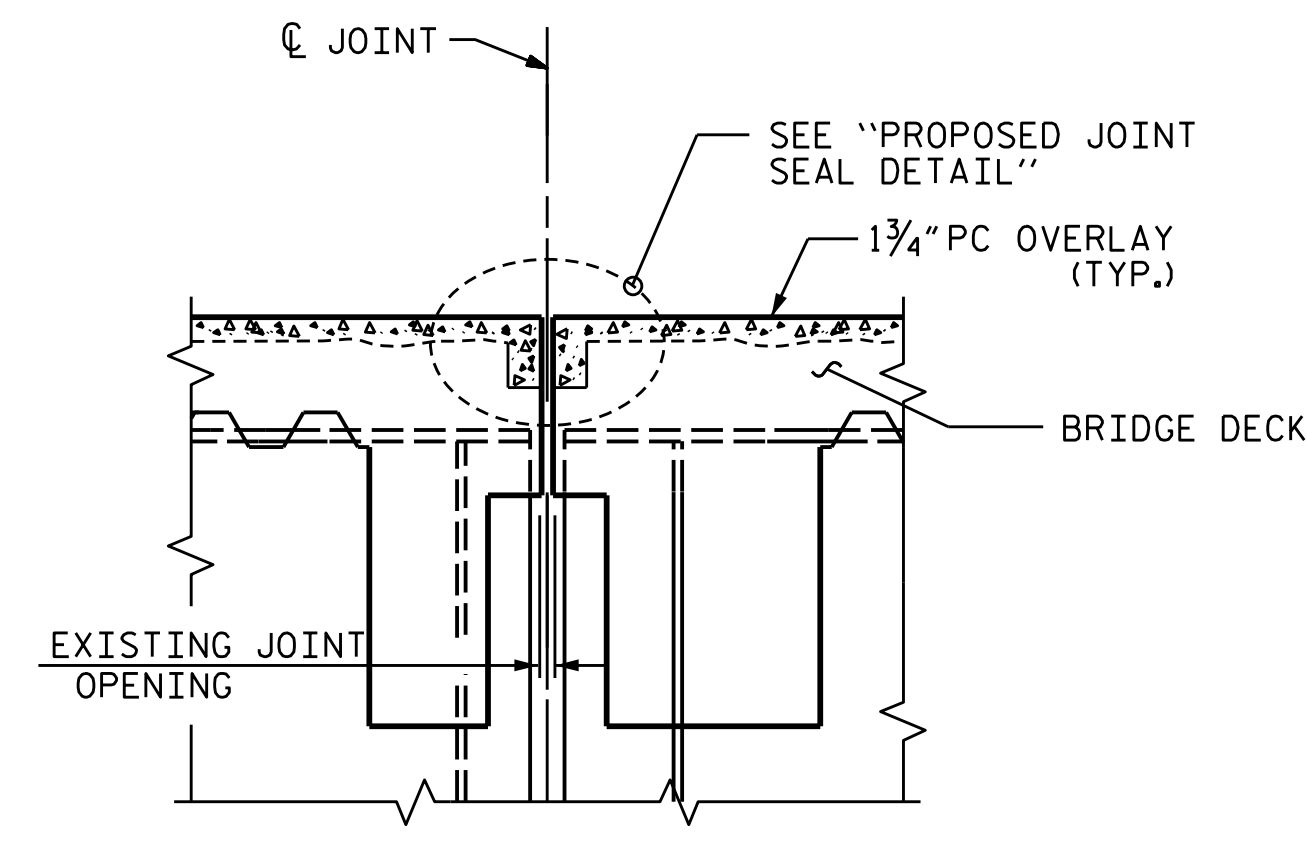
FOR EXCAVATION BELOW THE BOTTOM OF THE PLANNED JOINT DEMOLITION, CONCRETE FOR DECK REPAIR SHALL BE PLACED IN THE EXCAVATED AREA TO THE ELEVATION AT BOTTOM OF THE PROPOSED ELASTOMERIC CONCRETE FOR PRESERVATION HEADERS SHOWN.



EXISTING JOINT



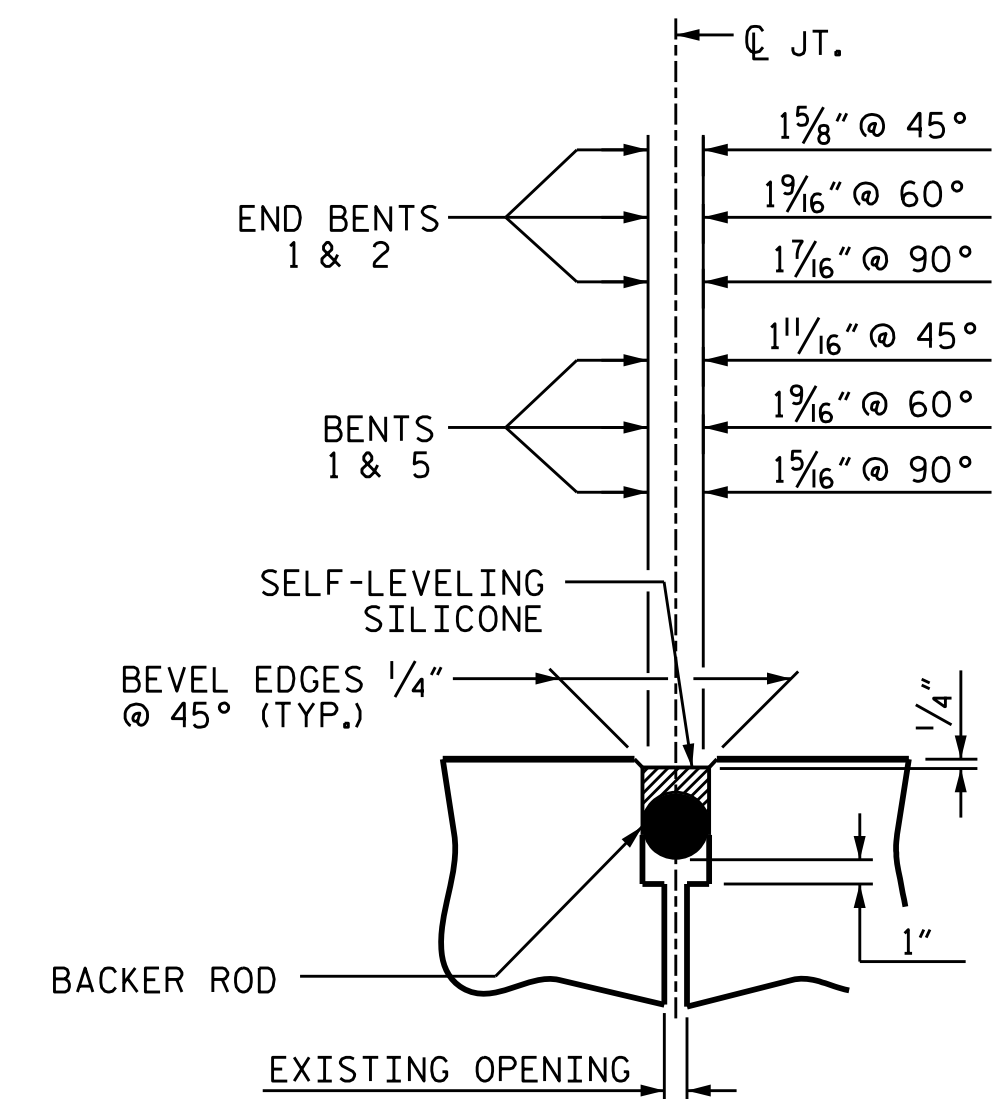
MINIMUM EXISTING JOINT DEMOLITION



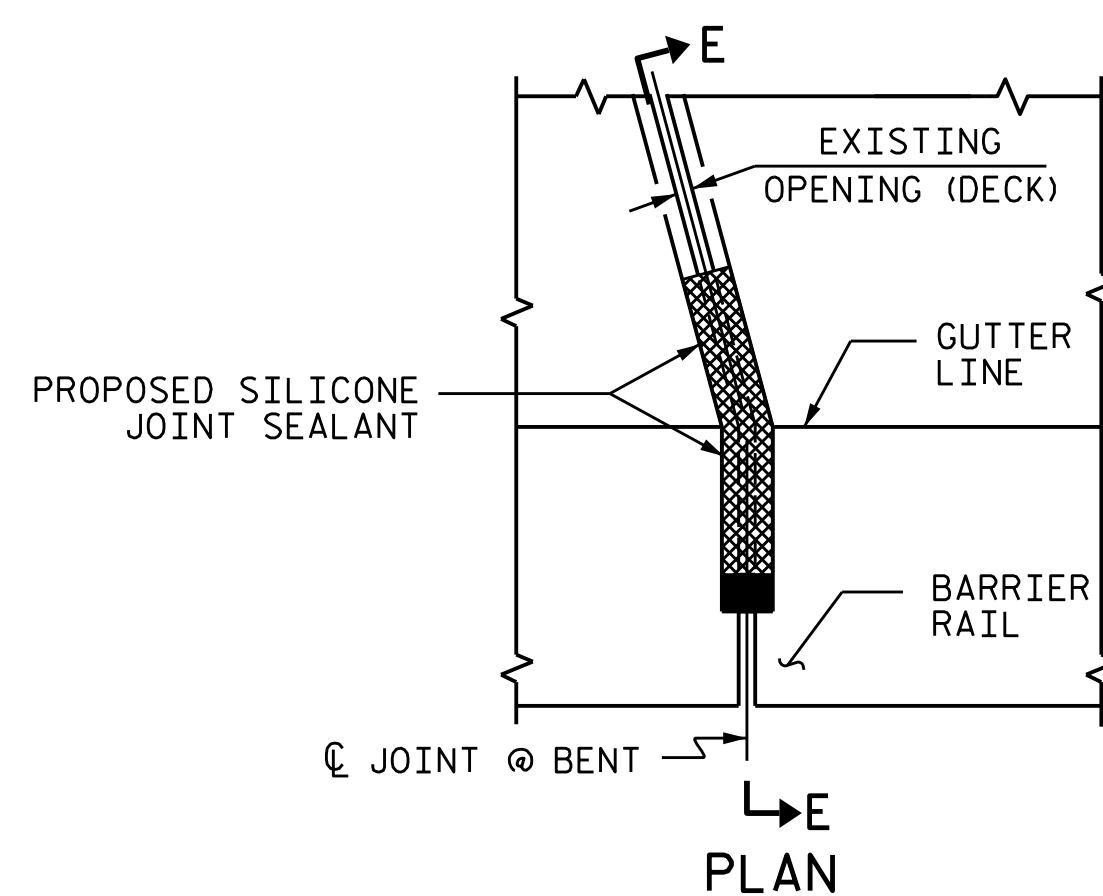
PROPOSED PRE-SAWED JOINT

JOINT INSTALLATION SEQUENCE AT BENTS 1 & 5

(SECTION B-B)



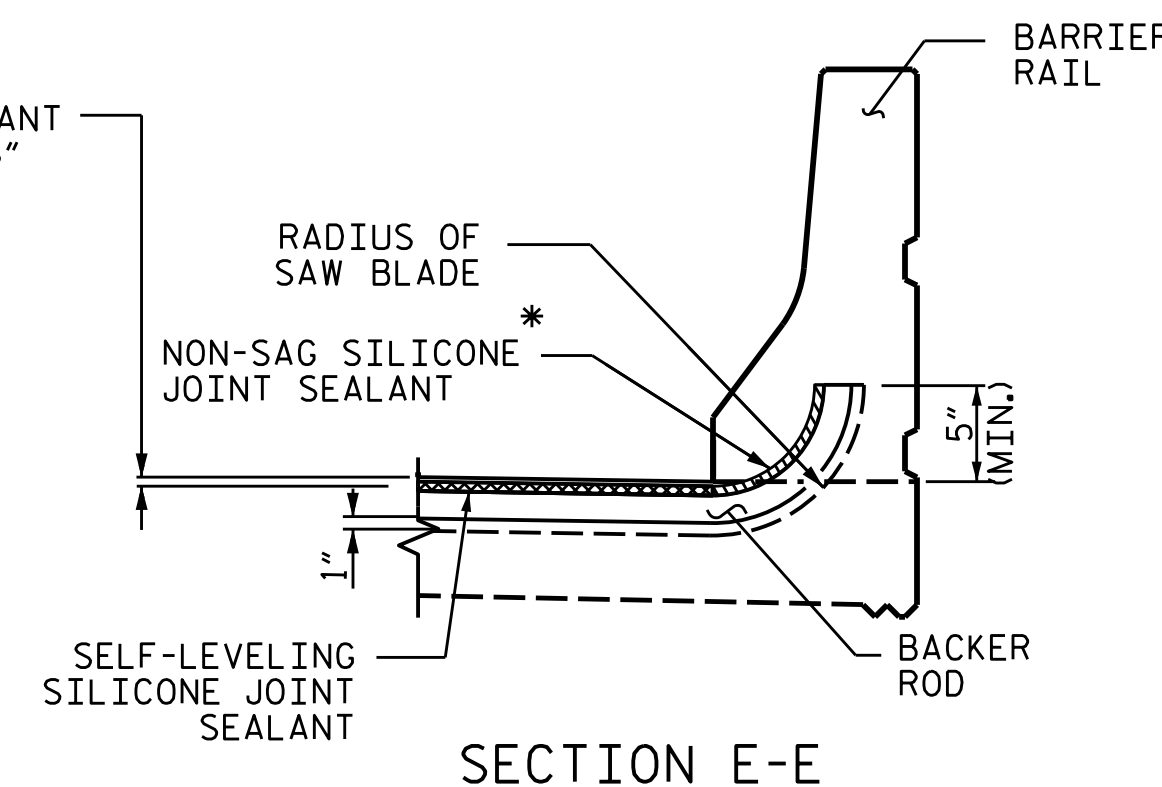
PROPOSED JOINT SEAL DETAIL  
(WITH SAWED DIMENSIONS)



JOINT DETAIL AT BARRIER RAIL

\* NON-SAG SILICONE JOINT SEALANT TO BE PLACED AND ALLOWED TO SET, PRIOR TO PLACEMENT OF SELF-LEVELING SILICONE JOINT SEALANT.

SILICONE JOINT SEALANT SHALL BE RECESSED 1/2" BELOW DECK SURFACE



SUMMARY OF QUANTITIES		
(TYP.)	ESTIMATE	ACTUAL
POURABLE SILICONE JOINT SEALANT	185.6 L.F.	

PROJECT NO. HI-0008  
JOHNSTON COUNTY  
 BRIDGE NO. 500106



STATE OF NORTH CAROLINA  
 DEPARTMENT OF TRANSPORTATION  
 RALEIGH

JOINT REPAIR DETAILS

DRAWN BY : A. ABRAHA DATE : 04/2021  
 CHECKED BY : S. WANCE DATE : 07/2021

8/15/2022  
 S:\DPC\Division4\HI-0008\401.HI-0008.SMU.JT.500106.dgn  
 oabr oha

DOCUMENT NOT CONSIDERED  
 FINAL UNLESS ALL  
 SIGNATURES COMPLETED

REVISIONS						SHEET NO.
NO.	BY:	DATE:	NO.	BY:	DATE:	S1-11
1			3			TOTAL SHEETS
2			4			48