



SUMMARY OF QUANTITIES FOR SPAN C

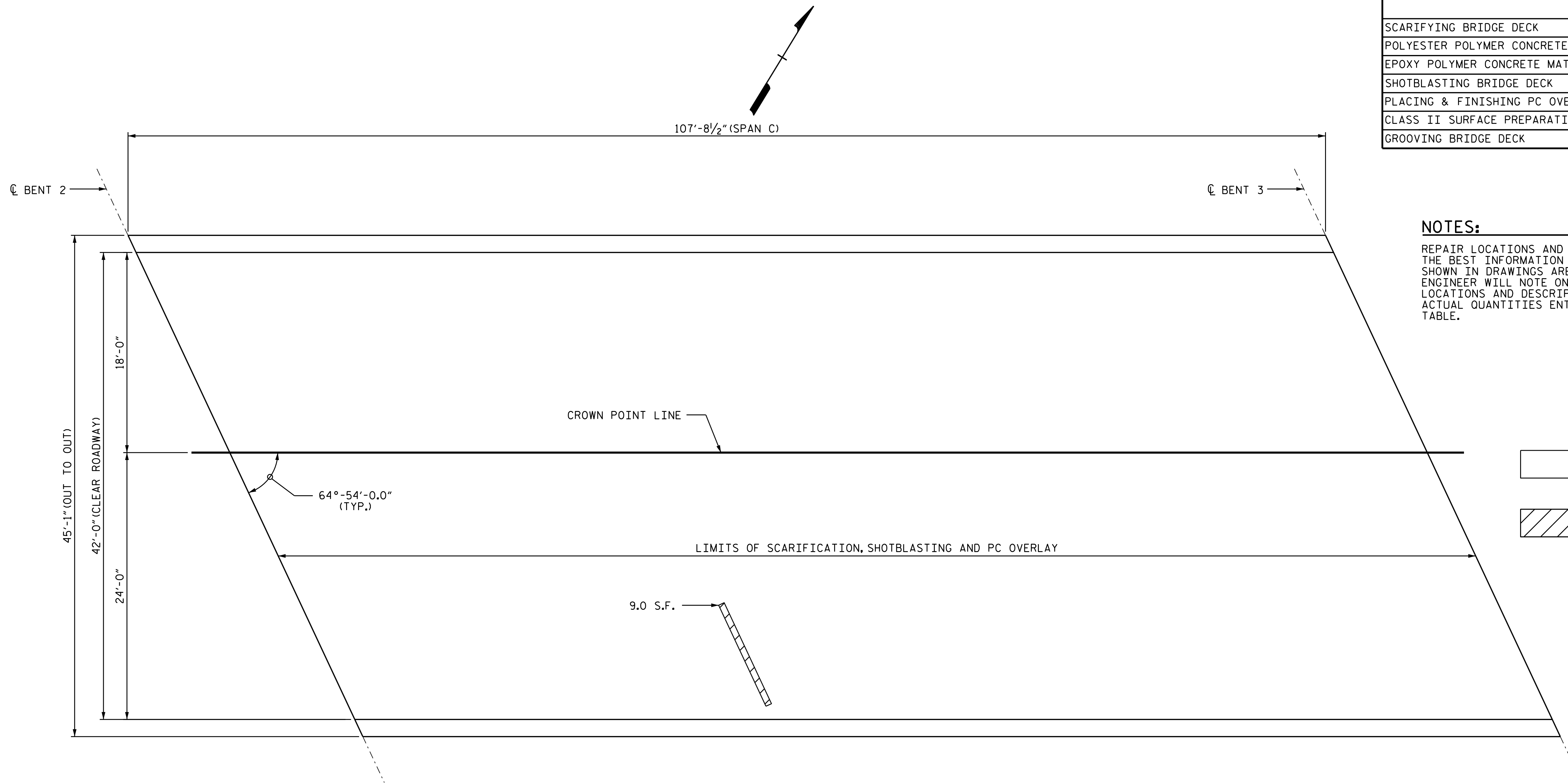
	ESTIMATE	ACTUAL
SCARIFYING BRIDGE DECK	503 SY	
POLYESTER POLYMER CONCRETE MATERIALS	28.0 CY	
EPOXY POLYMER CONCRETE MATERIALS (ALTERNATE)	28.0 CY	
SHOTBLASTING BRIDGE DECK	503 SY	
PLACING & FINISHING PC OVERLAY	503 SY	
CLASS II SURFACE PREPARATION	1.0 SY	
GROOVING BRIDGE DECK	4201 SF	

NOTES:

REPAIR LOCATIONS AND ESTIMATED QUANTITIES ARE GIVEN WITH THE BEST INFORMATION AVAILABLE. IF ADDITIONAL REPAIRS NOT SHOWN IN DRAWINGS ARE DEEMED NECESSARY BY ENGINEER, THE ENGINEER WILL NOTE ON THE DRAWINGS THE APPROXIMATE LOCATIONS AND DESCRIPTION OF THE REPAIRS AND ADJUST THE ACTUAL QUANTITIES ENTERED INTO SUMMARY OF REPAIR QUANTITIES TABLE.

REPAIR KEY

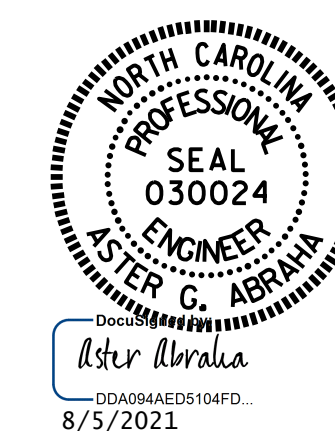
-  - SCARIFYING AND SHOTBLASTING OF BRIDGE DECK FOR PC OVERLAY
-  - APPROXIMATE AREA CLASS II SURFACE PREPARATION



PLAN OF SPAN C

PROJECT NO. HI-0008  
JOHNSTON COUNTY  
 BRIDGE NO. 500106

SHEET 3 OF 6



STATE OF NORTH CAROLINA  
 DEPARTMENT OF TRANSPORTATION  
 RALEIGH  
 SURFACE PREPARATION  
 SPAN C

DRAWN BY : G. AYES DATE : .05/2021  
 CHECKED BY : S. WANCE DATE : .07/2021

DOCUMENT NOT CONSIDERED  
 FINAL UNLESS ALL  
 SIGNATURES COMPLETED

REVISIONS						SHEET NO.
NO.	BY:	DATE:	NO.	BY:	DATE:	S1-5
1			3			TOTAL SHEETS
2			4			48