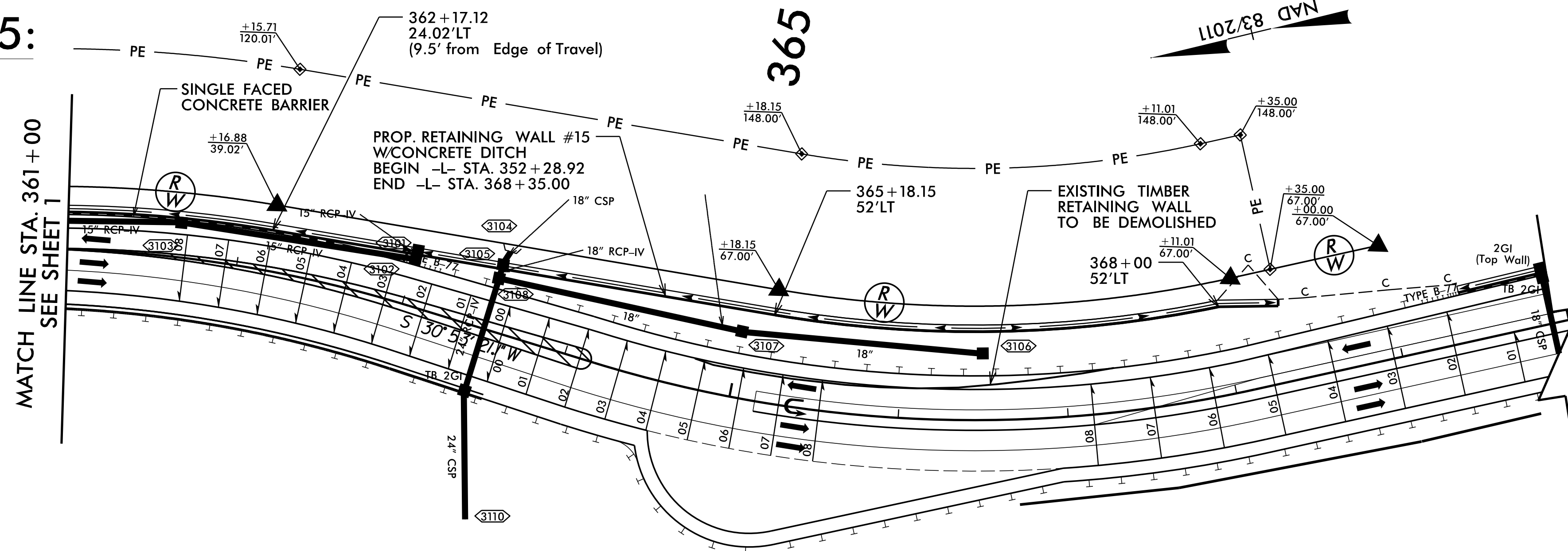
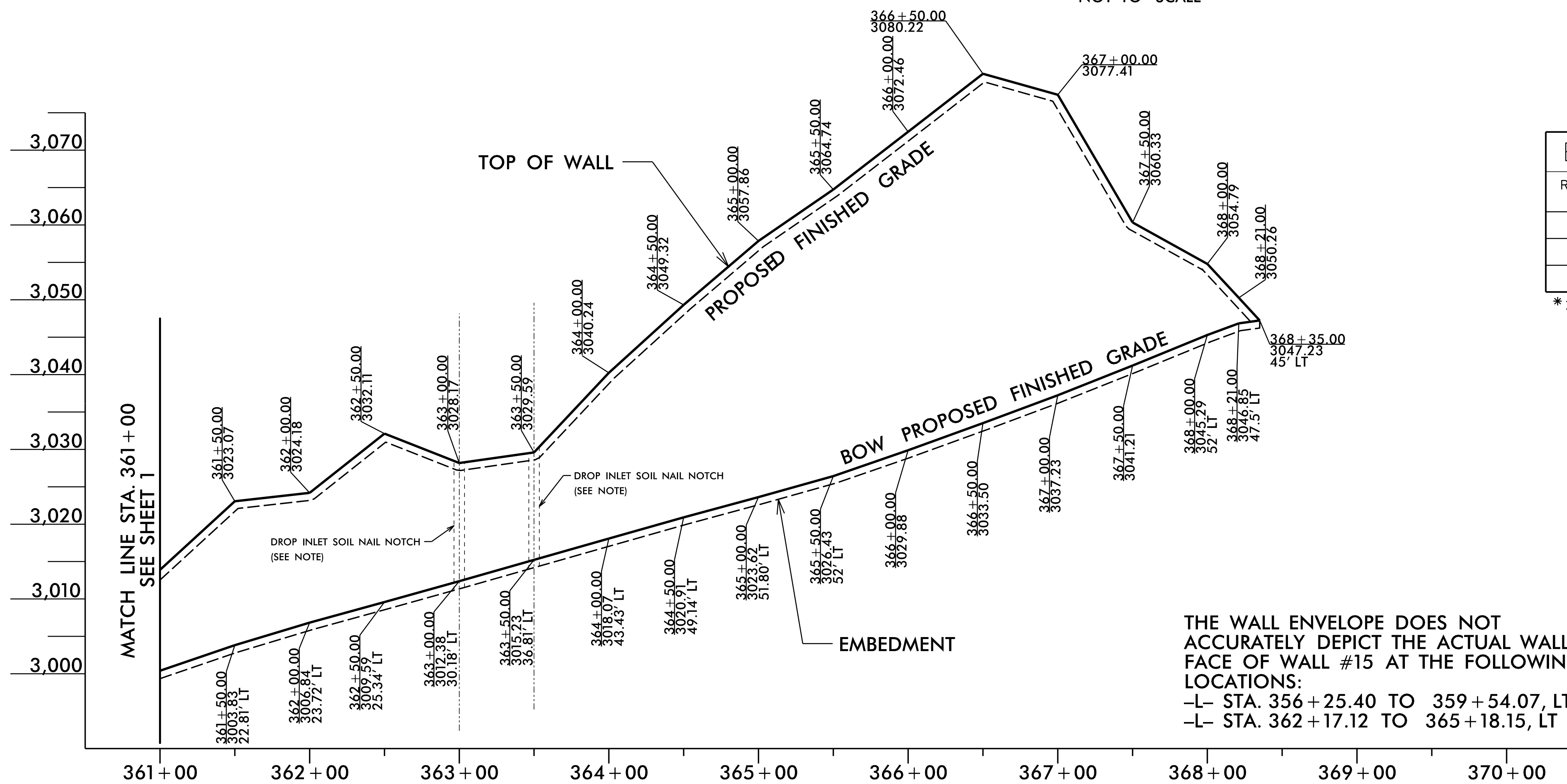


RETAINING WALL #15:



RETAINING WALL #15 - PLAN

NOT TO SCALE



RETAINING WALL #15 - ENVELOPE

NOT TO SCALE
BOW = BOTTOM OF WALL
(LOOKING AT FACE OF WALL)

ESTIMATED SOIL NAIL WALL QUANTITIES			
RETAINING WALL NO.	SOIL NAIL RETAINING WALLS (SQUARE FEET)	SOIL NAIL VERIFICATION TESTS	SOIL NAIL PROOF TESTS
15	43,850*	15	140
FORM LINER ARCHITECTURAL FINISH			43,850* SF
HORIZONTAL DRAINS (CONTINGENCY)			900 LF

* INCLUDES RETAINING WALL EMBEDMENT

PROJECT NO.: A-0009CB

GRAHAM COUNTY
RETAINING WALL #15: -L- 352+29, 46' LT TO 368+35, 52' LT

SHEET 2 OF 5

PREPARED BY: R. KRAL
REVIEWED BY: M. BREWER

DATE: 5/27/2022
DATE: 5/27/2022

RETAINING WALL #15 ENVELOPE AND WALL LAYOUT PROVIDED BY TGS ENGINEERS, INC.

Prepared in the Office of:

CAROLINAS GEOTECHNICAL GROUP
2400 CROWNPOINT EXECUTIVE DRIVE
SUITE 800
CHARLOTTE, NC 28227
(980) 339-8684

NORTH CAROLINA DEPARTMENT OF TRANSPORTATION DIVISION OF HIGHWAYS

GEOTECHNICAL ENGINEERING UNIT

REVISIONS					
NO.	BY	DATE	NO.	BY	DATE
1			3		
2			4		

RETAINING WALL #15
SOIL NAIL RETAINING WALL

SHEET NO. W15-2