

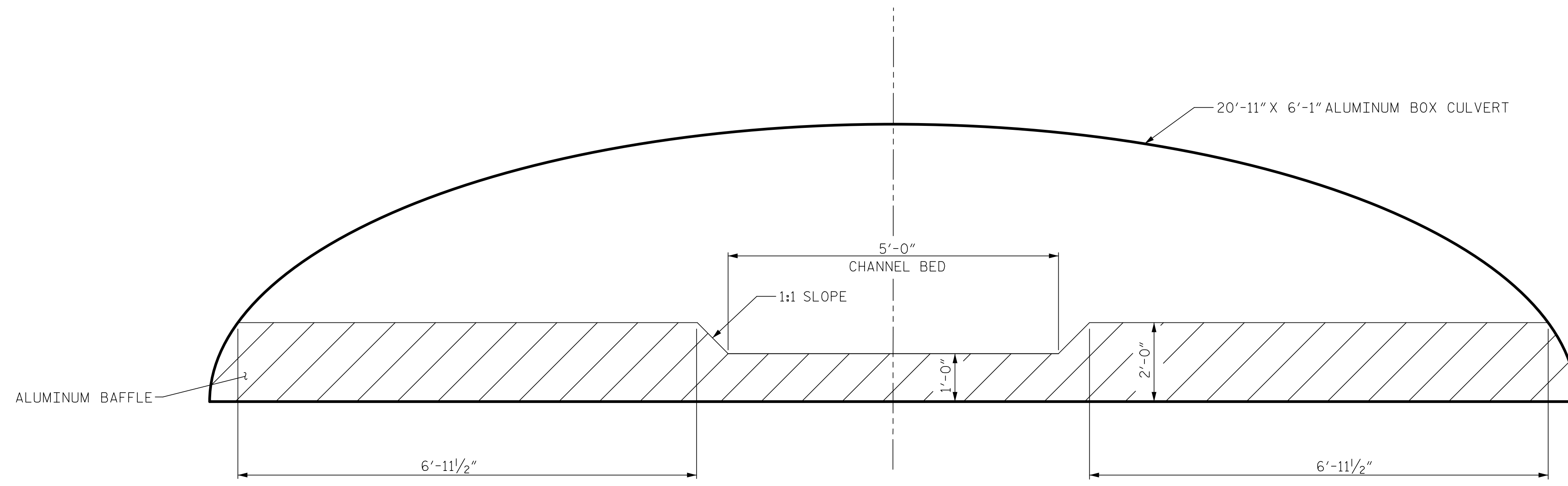
**NOTES:**

NATIVE MATERIAL EXCAVATED FROM THE EXISTING STREAM BED OR FLOOD PLAIN SHALL BE STOCKPILED AND LATER PLACED IN THE PROPOSED CULVERT BETWEEN SILLS TO PROVIDE A CONTINUOUS FLOW CHANNEL. RIP RAP MAY BE USED TO SUPPLEMENT THE NATIVE MATERIAL. IF RIP RAP IS USED, NATIVE MATERIAL SHALL BE PLACED ON TOP TO FILL VOIDS AND PROVIDE A LEVEL SURFACE FOR ANIMAL PASSAGE. NATIVE MATERIAL IS SUBJECT TO APPROVAL BY THE ENGINEER AND MAY BE SUBJECT TO PERMIT CONDITIONS.

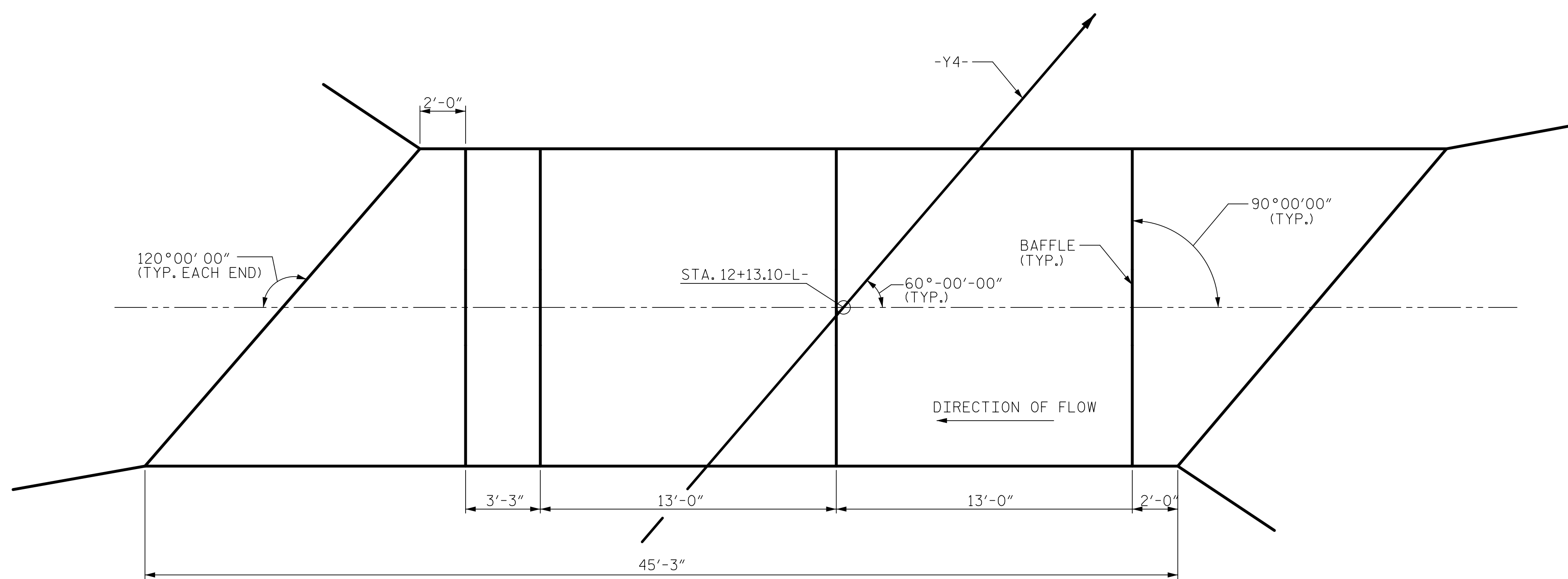
THE ENTIRE COST OF WORK REQUIRED TO PLACE THE EXCAVATED MATERIAL SHALL BE INCLUDED IN THE CONTRACT LUMP SUM PRICE BID FOR CULVERT EXCAVATION.

THE BAFFLES SHALL BE ALUMINUM AND BOLTED INTO THE CULVERT.

THE ENTIRE COST OF THE ALUMINUM BAFFLES SHALL BE INCLUDED IN THE LUMP SUM PRICE BID FOR THE ALUMINUM BOX CULVERT.



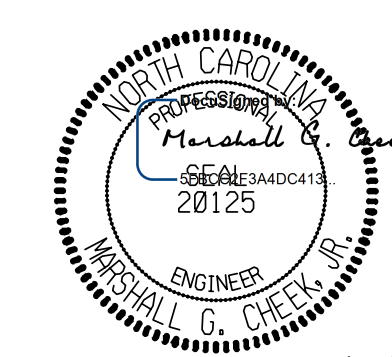
ELEVATION NORMAL TO SILL



FLOOR SILL LAYOUT

PROJECT NO. A-0009CB  
GRAHAM COUNTY  
 STATION: 12+13.10 -Y4-

SHEET 3 OF 3



7/27/2022

STATE OF NORTH CAROLINA  
 DEPARTMENT OF TRANSPORTATION  
 RALEIGH

**20'-11" X 6'-1"**  
**ALUMINUM**  
**BOX CULVERT**  
**60° SKEW**

DOCUMENT NOT CONSIDERED FINAL  
 UNLESS ALL SIGNATURES COMPLETED

TGS ENGINEERS  
 706 HILLSBOROUGH STREET  
 SUITE 200  
 RALEIGH, NC 27603  
 PH (919) 773-8887  
 CORP. LICENSE NO.: C-0275

REVISIONS						SHEET NO.
NO.	BY:	DATE:	NO.	BY:	DATE:	C3-3
1			3			TOTAL SHEETS
2			4			3

DRAWN BY : ZCS DATE : 10/21  
 CHECKED BY : MGC DATE : 11/21