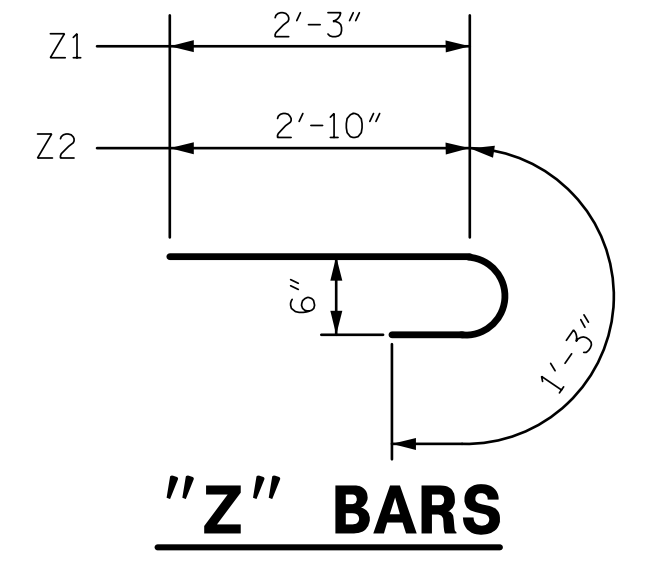
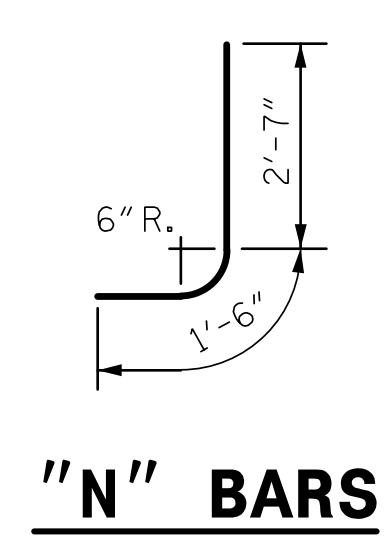
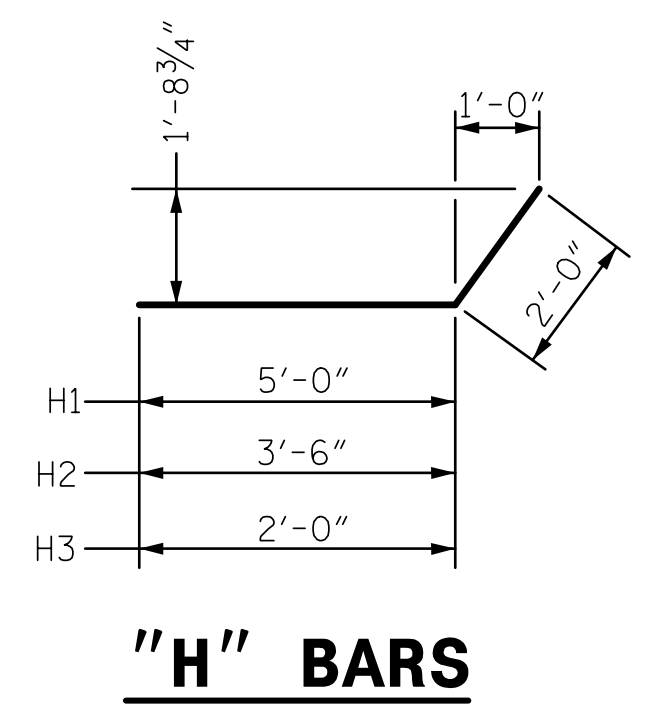
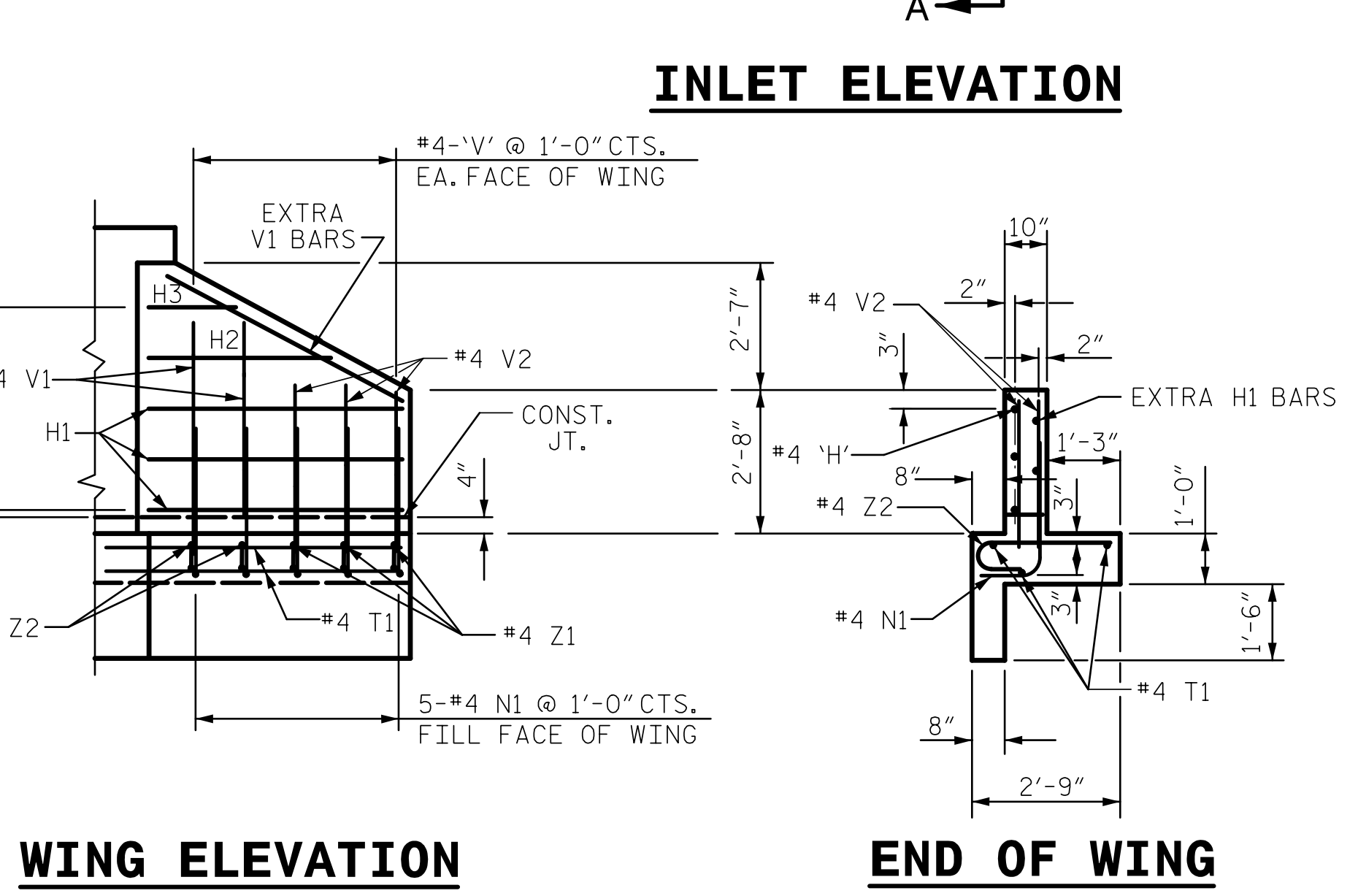
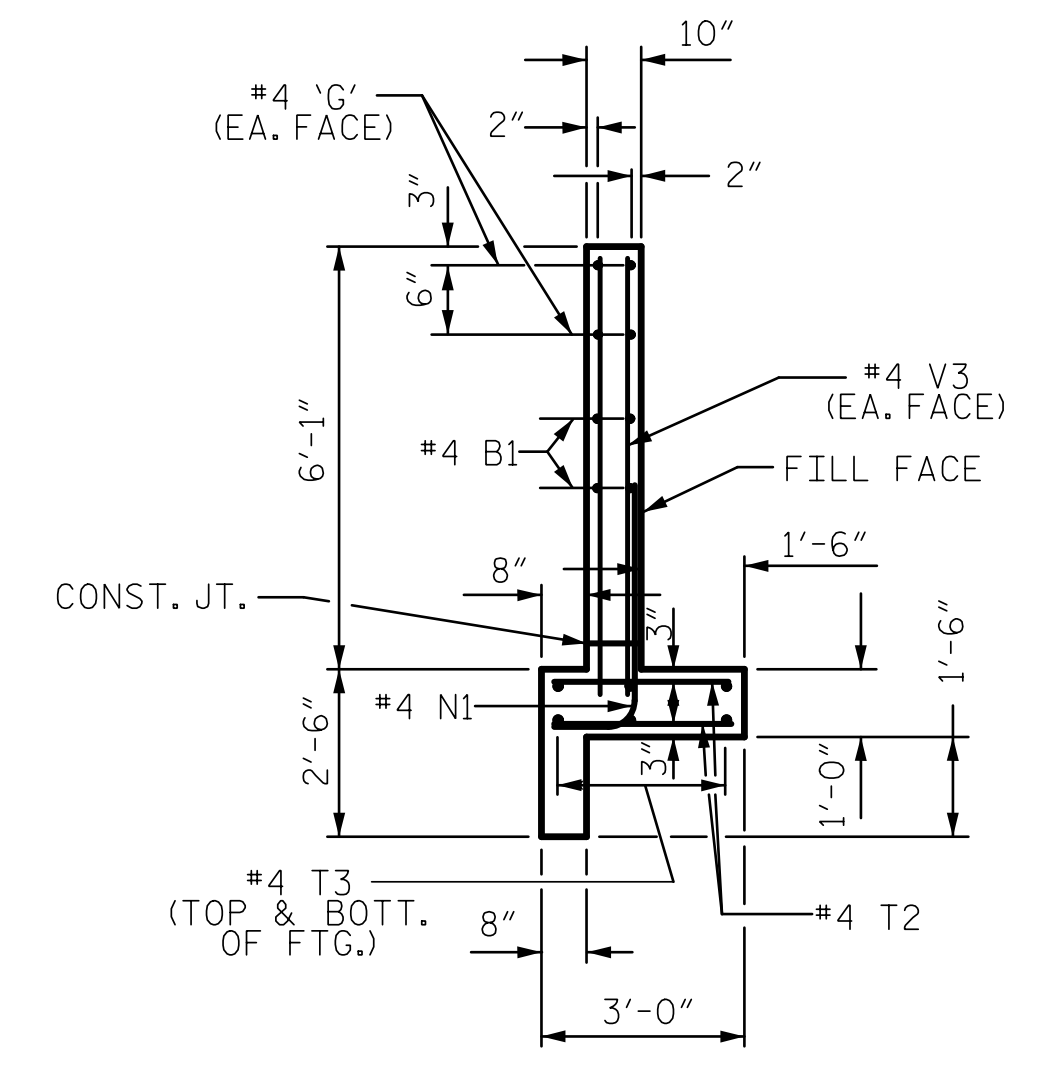


NOTE: CONSTRUCT HOOK BOLTS (ANCHORS) AT 2'-0" CTS. ALONG THE CIRCUMFERENCE OF THE 95" X 67" CMP. EMBED THE HOOK BOLTS 6" IN DEPTH. THE GALVANIZED 3/4" DIA. HOOK BOLTS MUST MEET ASTM A-307 OR ASTM A-836. BOTH BOLTS AND NUTS MUST BE IN ACCORDANCE WITH ASTM A-153 FOR GALVANIZING.



"H", "N", & "Z" BAR DIMENSIONS ARE OUT TO OUT.

**NOTES:**

ALL CONCRETE TO BE CLASS "A".

ALL REINFORCING STEEL SHALL BE ASTM A615-GRADE 60.

ALL REINFORCING STEEL SHALL BE DEFORMED BARS. WHERE SPLICING OF REINFORCEMENT IS NECESSARY, BARS ARE TO BE LAPPED 45 DIAMETERS. ALL DIMENSIONS RELATIVE TO REINFORCEMENT ARE TO CENTERS OF BARS.

THE FOOTING, CURTAIN WALL AND 4" OF WALL ARE TO BE POURED IN ONE OPERATION ALLOWING NO TIME FOR INITIAL SET TO TAKE PLACE BETWEEN THEM. THE REMAINING WALL SHALL THEN BE POURED IN ONE OPERATION.

ALL EXPOSED CORNERS ARE TO BE CHAMFERED 1".

3" DIAMETER DRAINS SHALL BE PLACED IN WALL AS SHOWN AND BE 6" ABOVE NORMAL FLOW LINE.

ALL MATERIAL AND WORKMANSHIP AS PER N.C. DEPARTMENT OF TRANSPORTATION STANDARD SPECIFICATIONS.

THE EXTRA BARS ARE PROVIDED FOR HOLDING REINFORCING STEEL IN CORRECT POSITION IN WING.

NO SEPARATE PAYMENT WILL BE MADE FOR REINFORCING STEEL OR CLASS A CONCRETE. THE ENTIRE COST OF THESE ITEMS SHALL BE PAID FOR UNDER THE LUMP SUM PRICE BID FOR CORRUGATED ALUMINUM PIPE CULVERT.

BILL OF MATERIAL				
BAR	NO.	SIZE	LENGTH	WEIGHT
B1	4	#4	7'-0"	19
G1	2	#4	12'-1"	16
G2	4	#4	4'-3"	11
H1	10	#4	7'-0"	47
H2	2	#4	5'-6"	7
H3	4	#4	4'-0"	11
N1	18	#4	4'-1"	49
T1	6	#4	5'-0"	20
T2	64	#4	2'-8"	114
T3	6	#4	15'-10"	63
V1	12	#4	4'-6"	36
V2	12	#4	3'-0"	24
V3	12	#4	6'-2"	49
Z1	6	#4	3'-6"	14
Z2	4	#4	4'-1"	11
REINFORCING STEEL			491 LBS	
CLASS A CONCRETE			5.9 CY	

DRAWN BY : ZCS DATE : 4/22  
 CHECKED BY : MGC DATE : 5/22

STATE OF NORTH CAROLINA  
 DEPARTMENT OF TRANSPORTATION  
 RALEIGH

7/27/2022

ENGINEER  
 MARSHALL G. CHECK, JR.

DOCUMENT NOT CONSIDERED FINAL  
 UNLESS ALL SIGNATURES COMPLETED

TGS ENGINEERS  
 804-C N. LAFAYETTE ST  
 SHELBY, NC 28150  
 PH (704) 476-0003  
 CORP. LICENSE NO.: C-0275

PROJECT NO. A-0009CB  
 GRAHAM COUNTY  
 STATION: 250+00.00 -L-

SHEET 2 OF 3

REVISIONS						SHEET NO.
NO.	BY:	DATE:	NO.	BY:	DATE:	C1-2
1			3			TOTAL SHEETS
2			4			3