
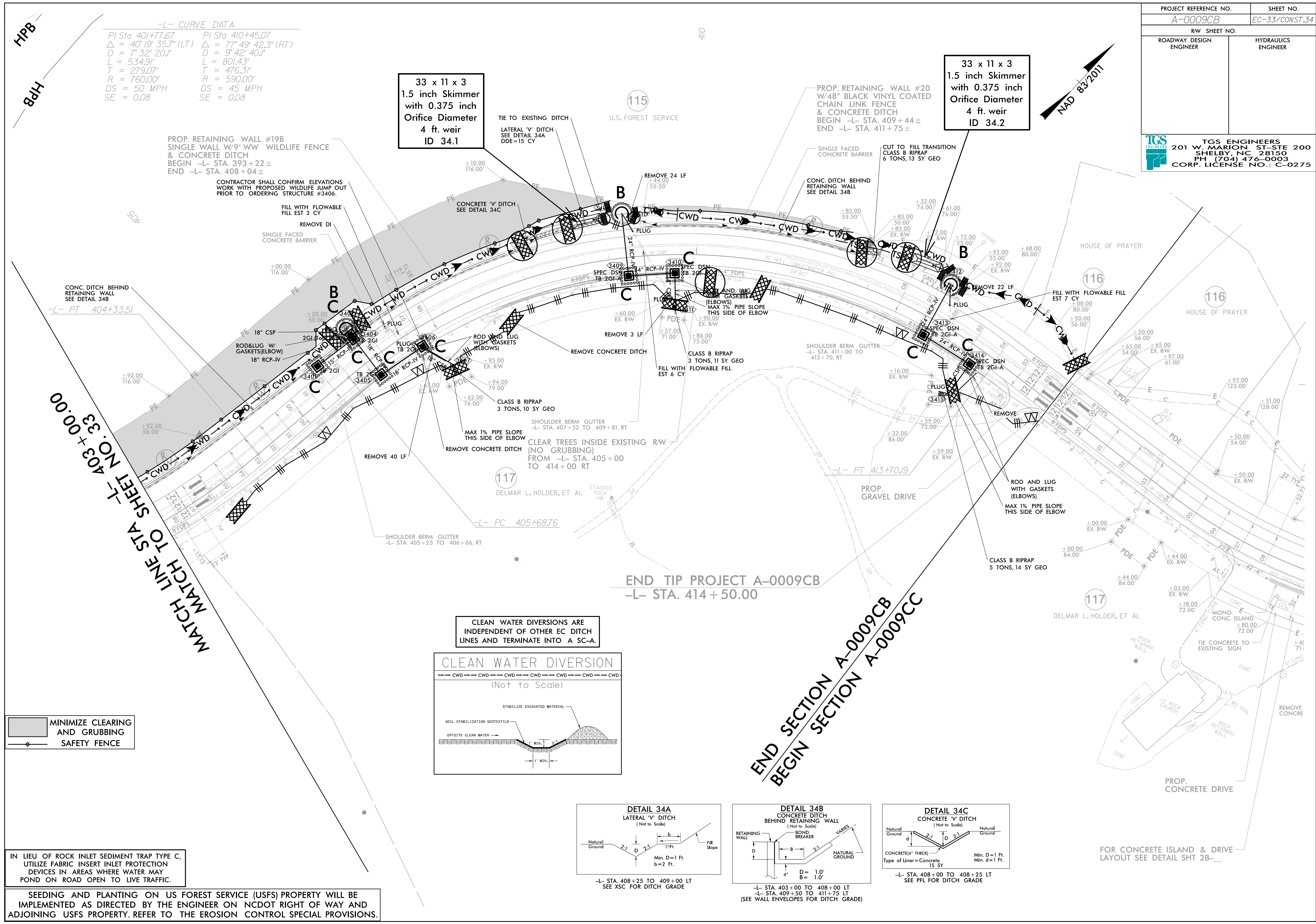


PROJECT REFERENCE NO.		SHEET NO.	
A-0009CB		EC-33/CONST.34	
RW SHEET NO.			
ROADWAY DESIGN ENGINEER		HYDRAULICS ENGINEER	
 TGS ENGINEERS 201 W. MARION ST. STE 200 SHELBY, NC 28150 PH (704) 476-0003 CORP. LICENSE NO.: C-0275			



-L- CURVE DATA

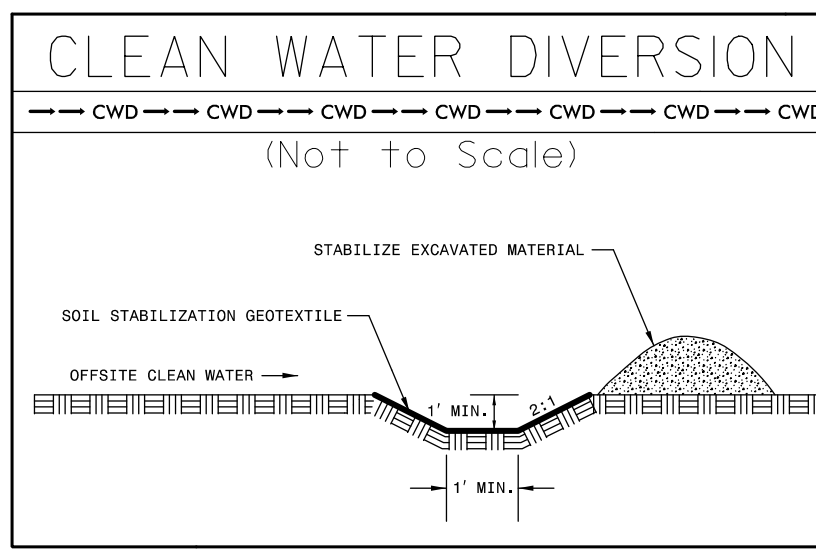
PI Sta 401+77.67	PI Sta 410+45.07
$\Delta = 40^\circ 19' 35.7''$ (LT)	$\Delta = 77^\circ 49' 42.3''$ (RT)
$D = 7^\circ 32' 20.1''$	$D = 9^\circ 42' 40.1''$
$L = 534.91'$	$L = 801.43'$
$T = 279.07'$	$T = 476.31'$
$R = 760.00'$	$R = 590.00'$
$DS = 50$ MPH	$DS = 45$ MPH
$SE = 0.08$	$SE = 0.08$

33 x 11 x 3
1.5 inch Skimmer
with 0.375 inch
Orifice Diameter
4 ft. weir
ID 34.1

33 x 11 x 3
1.5 inch Skimmer
with 0.375 inch
Orifice Diameter
4 ft. weir
ID 34.2

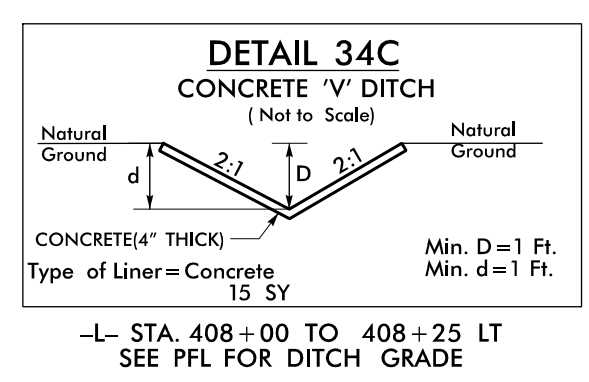
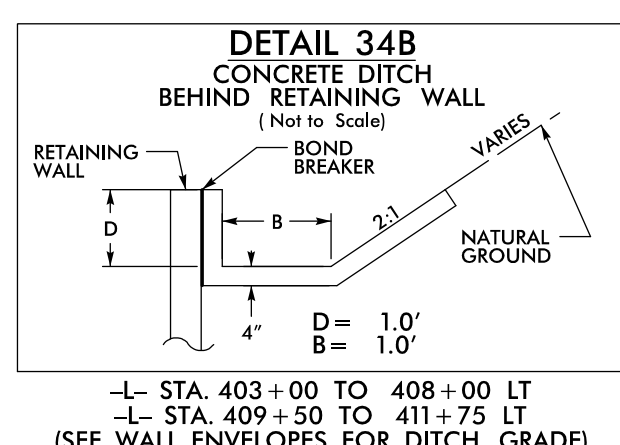
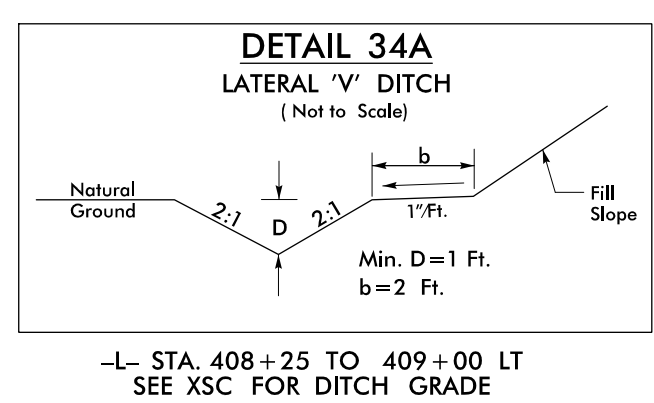
MINIMIZE CLEARING AND GRUBBING
SAFETY FENCE

CLEAN WATER DIVERSIONS ARE INDEPENDENT OF OTHER EC DITCH LINES AND TERMINATE INTO A SC-A.



IN LIEU OF ROCK INLET SEDIMENT TRAP TYPE C, UTILIZE FABRIC INSERT INLET PROTECTION DEVICES IN AREAS WHERE WATER MAY POND ON ROAD OPEN TO LIVE TRAFFIC.

SEEDING AND PLANTING ON US FOREST SERVICE (USFS) PROPERTY WILL BE IMPLEMENTED AS DIRECTED BY THE ENGINEER ON NCDOT RIGHT OF WAY AND ADJOINING USFS PROPERTY. REFER TO THE EROSION CONTROL SPECIAL PROVISIONS.



FOR CONCRETE ISLAND & DRIVE LAYOUT SEE DETAIL SHT 2B--