
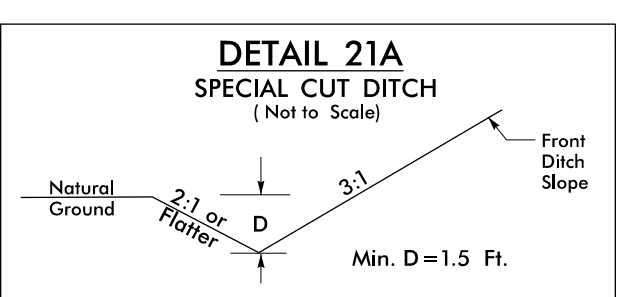
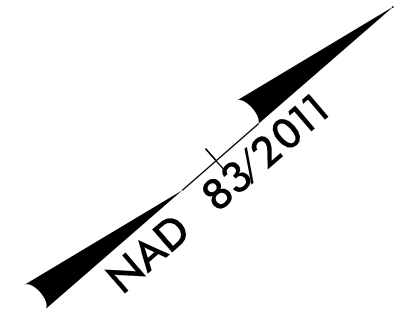
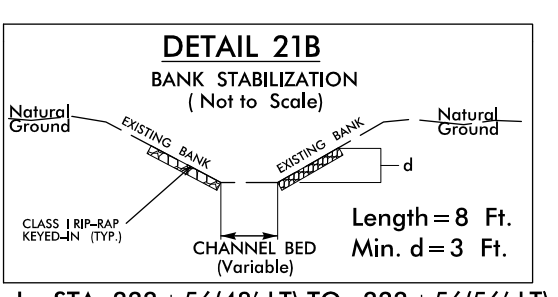


PROJECT REFERENCE NO.	SHEET NO.
A-0009CB	EC-20/CONST.21
RW SHEET NO.	
ROADWAY DESIGN ENGINEER	HYDRAULICS ENGINEER
 <b>TGS ENGINEERS</b> 201 W. MARION ST-STE 200 SHELBY, NC 28150 PH (704) 476-0003 CORP. LICENSE NO.: C-0275	



-L- STA 227+16 TO 228+50 RT  
SEE PFL FOR DITCH GRADES



-L- STA 222+56(48' LT) TO 222+56(56' LT)

For Slopes Excavated Greater Than 10 feet  
Install Matting for Erosion Control on  
Entire Slope as Work Allows.

Place Matting for Erosion Control  
on Slopes Adjacent to Permitted  
Wetlands as Work Allows.

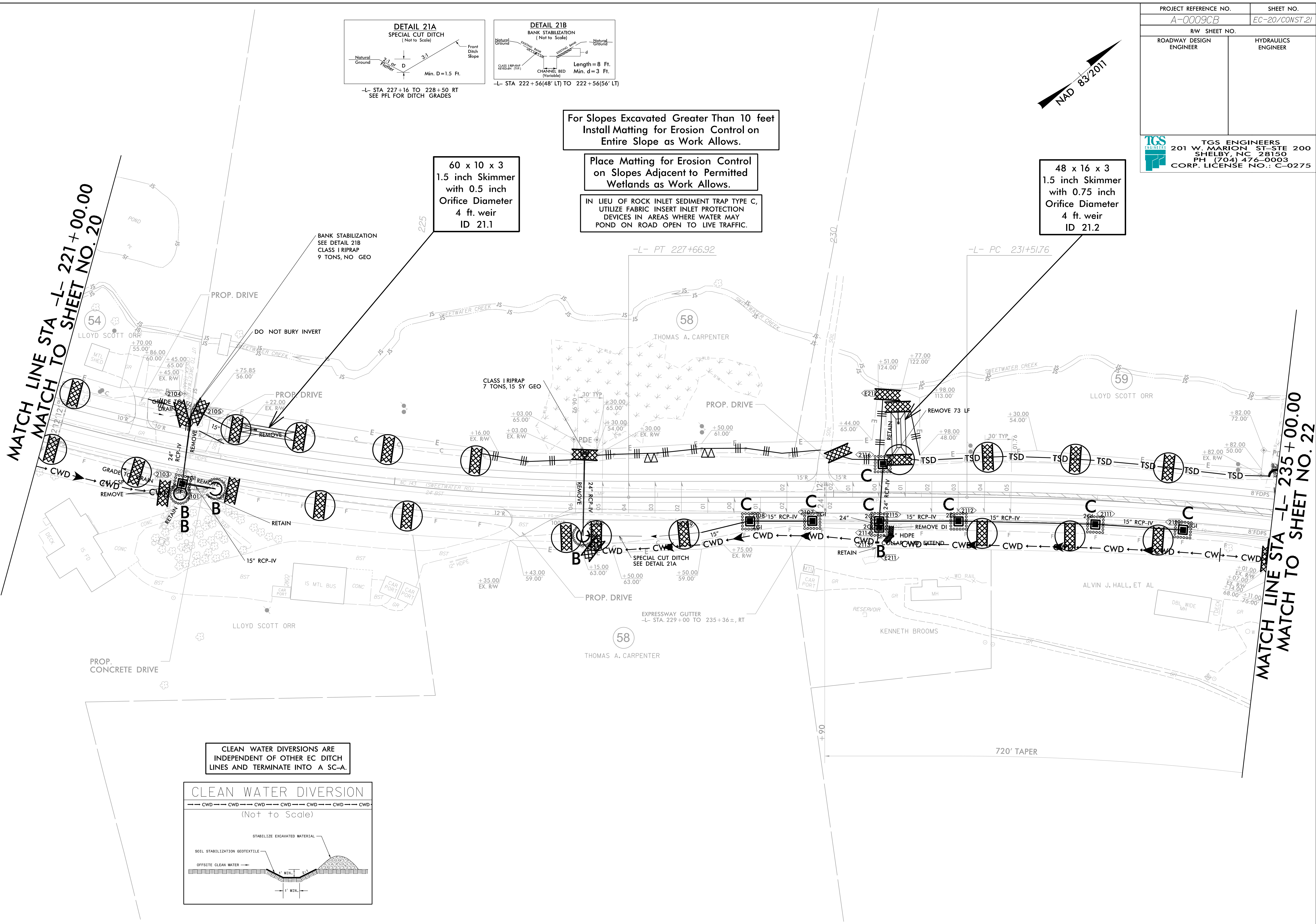
IN LIEU OF ROCK INLET SEDIMENT TRAP TYPE C,  
UTILIZE FABRIC INSERT INLET PROTECTION  
DEVICES IN AREAS WHERE WATER MAY  
POND ON ROAD OPEN TO LIVE TRAFFIC.

60 x 10 x 3  
1.5 inch Skimmer  
with 0.5 inch  
Orifice Diameter  
4 ft. weir  
ID 21.1

48 x 16 x 3  
1.5 inch Skimmer  
with 0.75 inch  
Orifice Diameter  
4 ft. weir  
ID 21.2

MATCH LINE STA -L- 221+00.00  
MATCH TO SHEET NO. 20

MATCH LINE STA -L- 235+00.00  
MATCH TO SHEET NO. 22



CLEAN WATER DIVERSIONS ARE  
INDEPENDENT OF OTHER EC DITCH  
LINES AND TERMINATE INTO A SC-A.

