
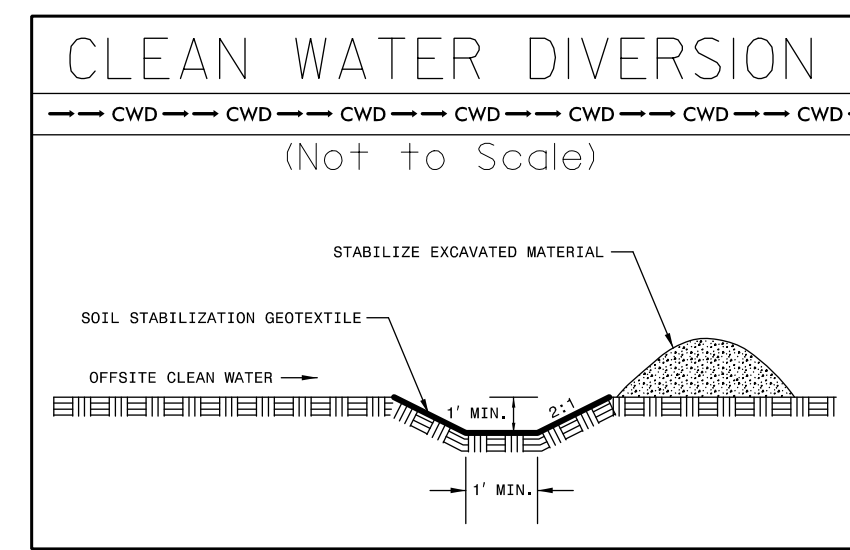
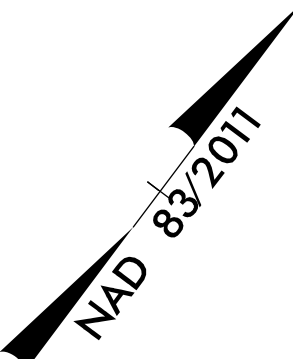
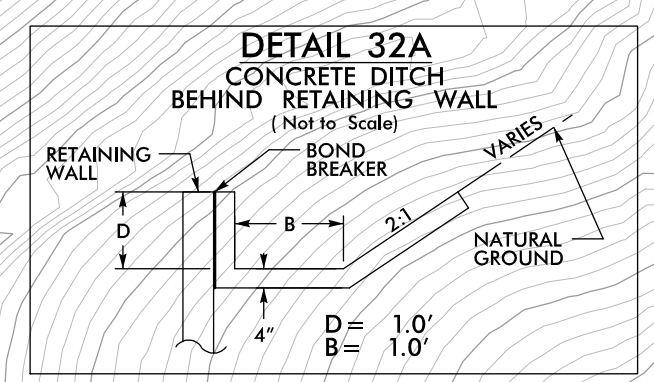


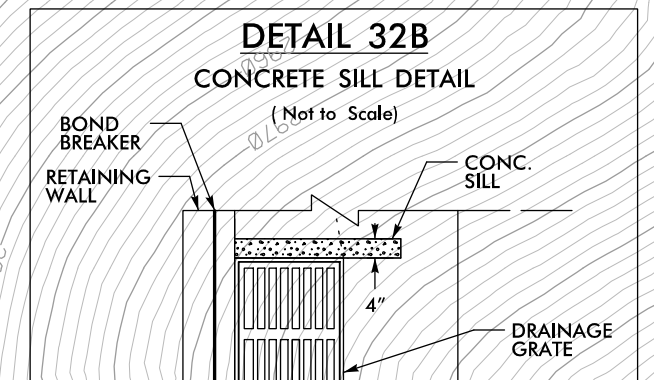
PROJECT REFERENCE NO.	SHEET NO.
A-0009CB	EC-16/CONST.32
RW SHEET NO.	
ROADWAY DESIGN ENGINEER	HYDRAULICS ENGINEER
 TGS ENGINEERS 201 W. MARION ST. STE 200 SHELBY, NC 28150 PH (704) 476-0003 CORP. LICENSE NO.: C-0275	



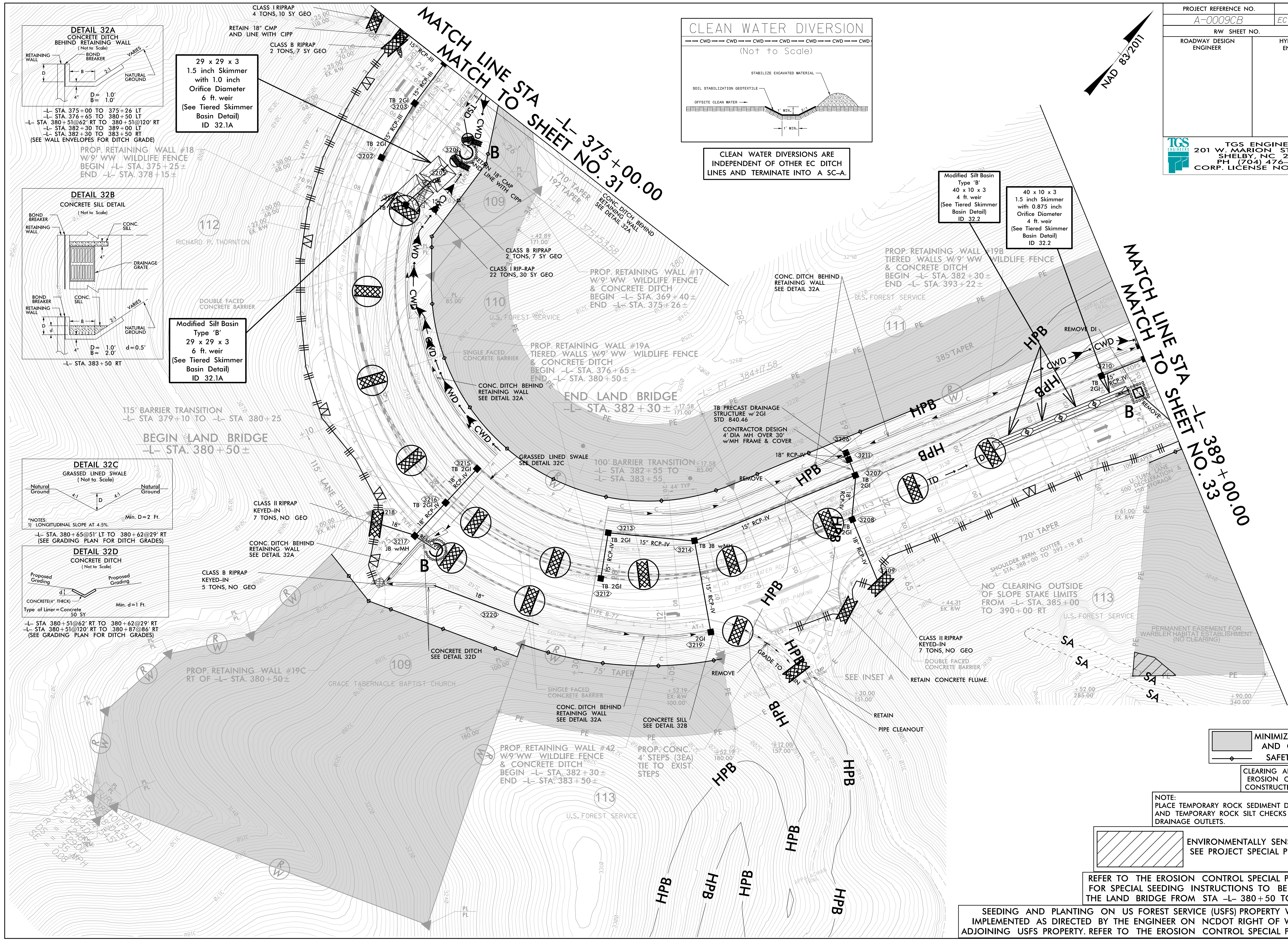
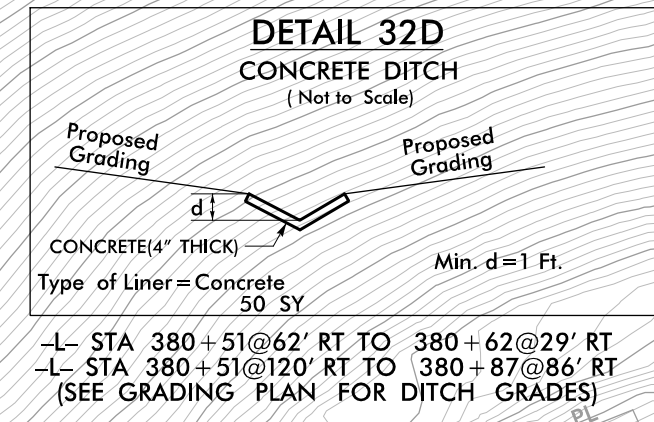
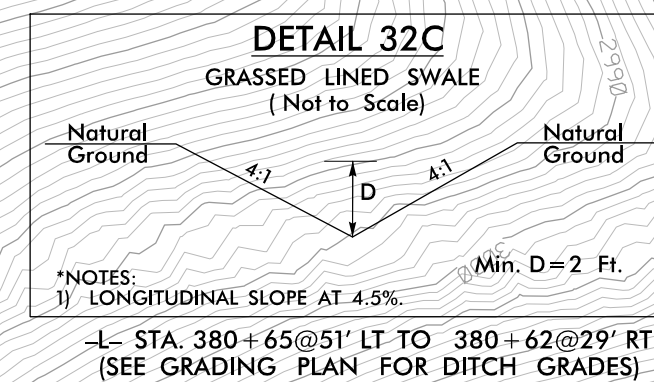
CLEAN WATER DIVERSIONS ARE INDEPENDENT OF OTHER EC DITCH LINES AND TERMINATE INTO A SC-A.



29 x 29 x 3
1.5 inch Skimmer with 1.0 inch Orifice Diameter
6 ft. weir
(See Tiered Skimmer Basin Detail)
ID 32.1A



Modified Silt Basin Type 'B'
29 x 29 x 3
1.5 inch Skimmer with 0.875 inch Orifice Diameter
4 ft. weir
(See Tiered Skimmer Basin Detail)
ID 32.2



MINIMIZE CLEARING AND GRUBBING
SAFETY FENCE

ENVIRONMENTALLY SENSITIVE AREA
SEE PROJECT SPECIAL PROVISIONS

NOTE:
PLACE TEMPORARY ROCK SEDIMENT DAMS TYPE - B AND TEMPORARY ROCK SILT CHECKS TYPE - A AT DRAINAGE OUTLETS.

REFER TO THE EROSION CONTROL SPECIAL PROVISIONS FOR SPECIAL SEEDING INSTRUCTIONS TO BE USED ON THE LAND BRIDGE FROM STA -L- 380+50 TO 382+30.

SEEDING AND PLANTING ON US FOREST SERVICE (USFS) PROPERTY WILL BE IMPLEMENTED AS DIRECTED BY THE ENGINEER ON NCDOT RIGHT OF WAY AND ADJOINING USFS PROPERTY. REFER TO THE EROSION CONTROL SPECIAL PROVISIONS.