
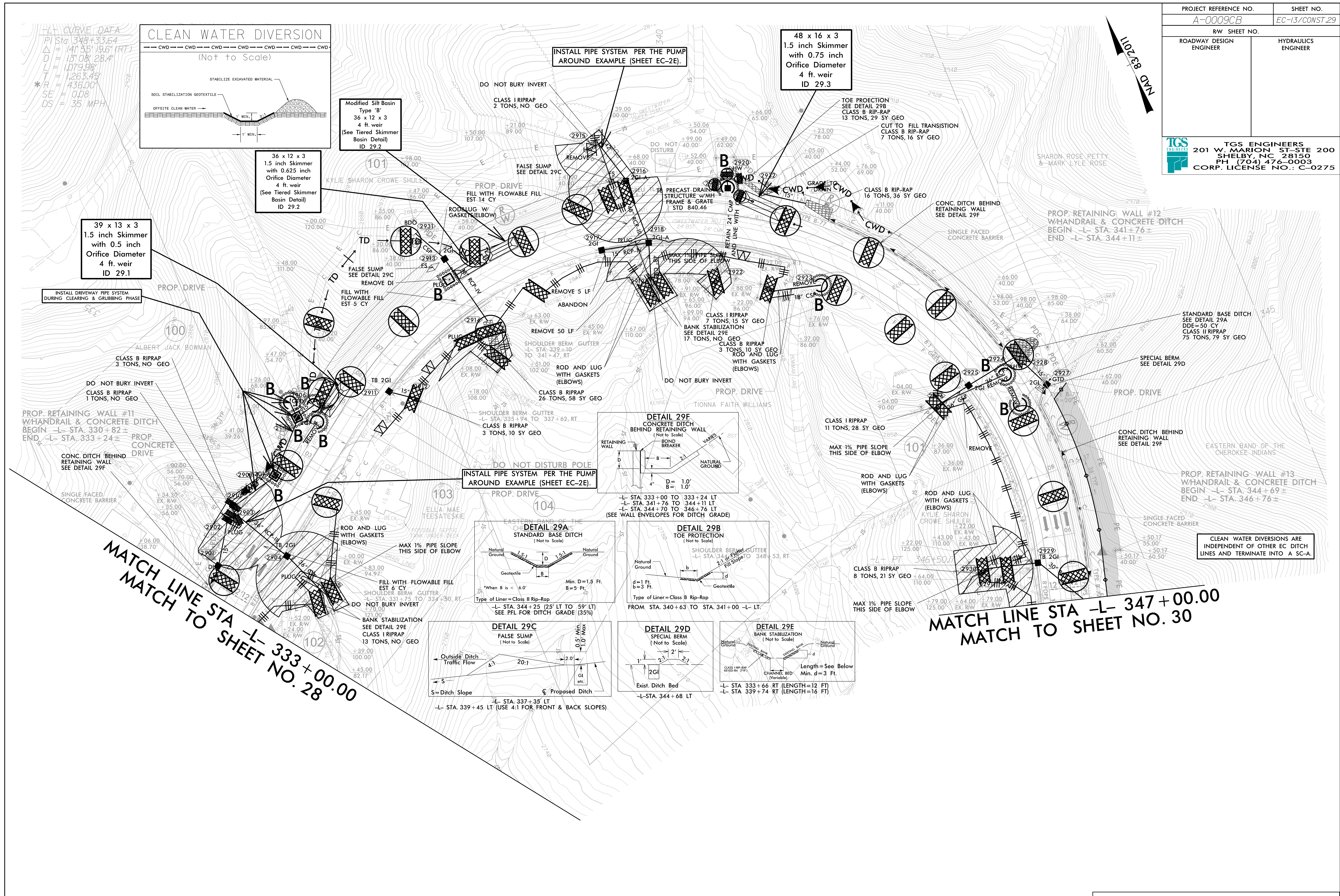
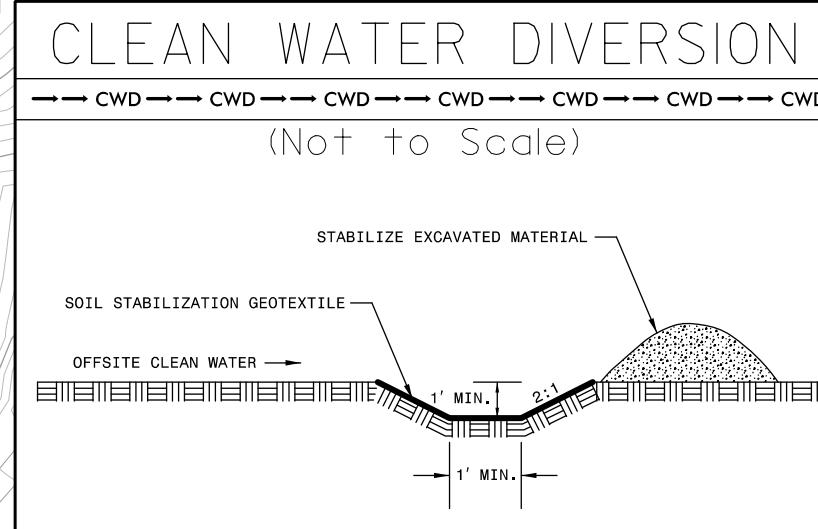


PROJECT REFERENCE NO.	SHEET NO.
A-0009CB	EC-13/CONST.29
RW SHEET NO.	
ROADWAY DESIGN ENGINEER	HYDRAULICS ENGINEER
 <b>TGS ENGINEERS</b> 201 W. MARION ST-STE 200 SHELBY, NC 28150 PH (704) 476-0003 CORP. LICENSE NO.: C-0275	



**CURVE DATA**  
 P Sta 348+33.64  
 $\Delta = 141.55' 19.6" (RT)$   
 $L = 137.08' 28.4"$   
 $E = 1.265' 45"$   
 $SE = 436.00'$   
 $DS = 35 MPH$



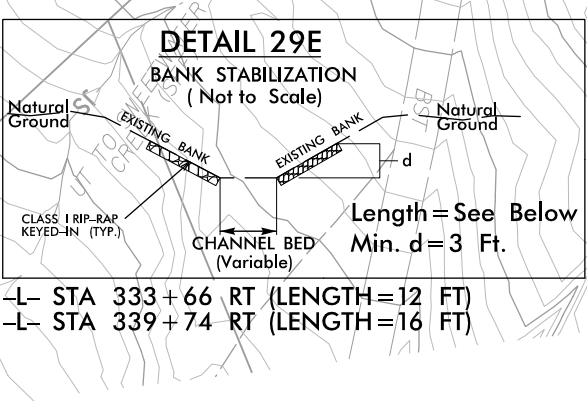
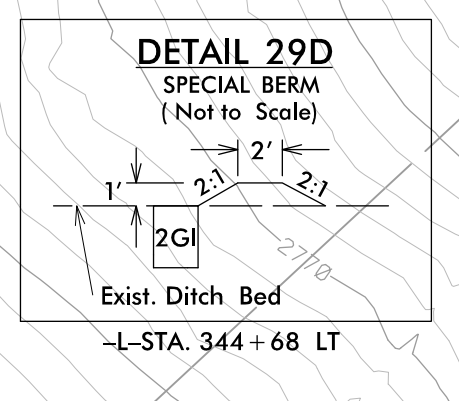
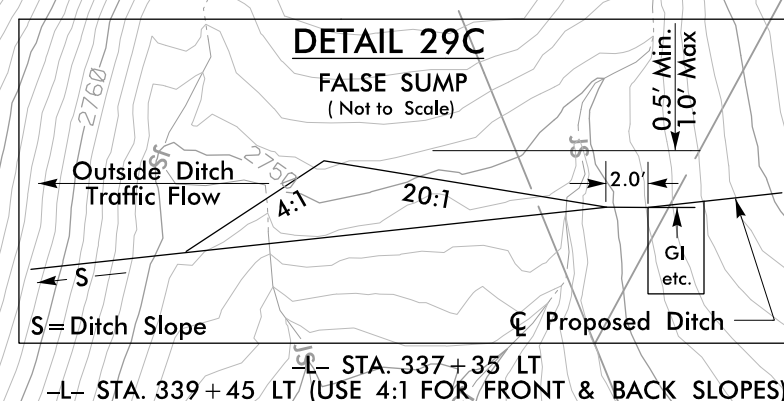
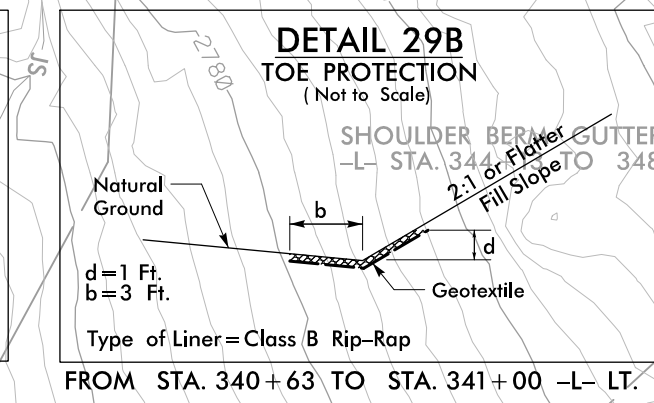
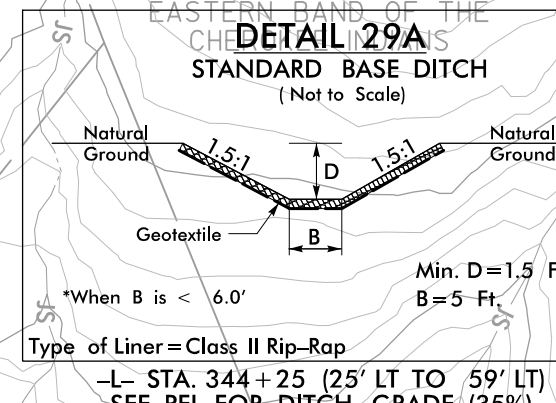
**Modified Silt Basin**  
 Type 'B'  
 36 x 12 x 3  
 4 ft. weir  
 (See Tiered Skimmer Basin Detail)  
 ID 29.2

36 x 12 x 3  
 1.5 inch Skimmer  
 with 0.625 inch  
 Orifice Diameter  
 4 ft. weir  
 (See Tiered Skimmer Basin Detail)  
 ID 29.2

39 x 13 x 3  
 1.5 inch Skimmer  
 with 0.5 inch  
 Orifice Diameter  
 4 ft. weir  
 ID 29.1

INSTALL DRIVEWAY PIPE SYSTEM DURING CLEARING & GRUBBING PHASE

INSTALL PIPE SYSTEM PER THE PUMP AROUND EXAMPLE (SHEET EC-2E).



 MINIMIZE CLEARING AND GRUBBING  
 SAFETY FENCE

 CLEARING AND GRUBBING EROSION CONTROL FOR CONSTRUCTION SHEET 29

INSTALL PIPE(S) IN JURISDICTIONAL AREAS WITHOUT IMPACTING STREAM UNTIL AREA STABILIZED AND ACCORDING TO NCDOT BEST MANAGEMENT PRACTICES FOR CONSTRUCTION AND MAINTENANCE ACTIVITIES MANUAL.

NOTE: PLACE TEMPORARY ROCK SEDIMENT DAMS TYPE - B AND TEMPORARY ROCK SILT CHECKS TYPE - A AT DRAINAGE OUTLETS.

 ENVIRONMENTALLY SENSITIVE AREA  
 SEE PROJECT SPECIAL PROVISIONS