

-L- CURVE DATA

PI Sta 300+23.36  
Δ = 31° 41' 09.8" (LT)  
D = 5' 43' 46.5"  
L = 553.03'  
T = 283.78'  
R = 1,000.00'  
SE = 0.08  
DS = 55 MPH

PI Sta 24+49.98  
Δ = 62° 22' 39.1" (RT)  
D = 60' 18' 40.8"  
L = 103.43'  
T = 57.51'  
R = 95.00'  
① -Y4- PC 23+92.47  
② -Y4- PT 24+95.90

PI Sta 26+47.22  
Δ = 33° 21' 29.8" (LT)  
D = 19' 05' 54.9"  
L = 175.19'  
T = 90.11'  
R = 300.00'  
③ -Y4- PC 25+57.05  
④ -Y4- PCC 27+32.23  
⑤ -Y4- PT 28+49.59

-Y4- CURVE DATA

PI Sta 27+92.98  
Δ = 36° 32' 32.0" (LT)  
D = 31' 08' 20.4"  
L = 175.19'  
T = 60.75'  
R = 264.00'

PI Sta 29+58.22  
Δ = 28° 20' 20.0" (RT)  
D = 21' 42' 10.6"  
L = 130.58'  
T = 66.65'  
R = 184.00'

PI Sta 30+89.80  
Δ = 7° 44' 28.4" (RT)  
D = 5' 43' 46.5"  
L = 135.11'  
T = 67.66'  
R = 1000.00'

PI Sta 33+31.35  
Δ = 59° 32' 46.6" (LT)  
D = 57' 17' 44.8"  
L = 103.93'  
T = 57.21'  
R = 100.00'

PI Sta 34+83.66  
Δ = 76° 08' 00.0" (RT)  
D = 86' 48' 42.4"  
L = 87.70'  
T = 51.69'  
R = 66.00'

PI Sta 36+39.74  
Δ = 84° 11' 34.2" (LT)  
D = 76' 23' 39.7"  
L = 110.21'  
T = 67.76'  
R = 75.00'

PI Sta 37+06.50  
Δ = 10° 12' 57.1" (LT)  
D = 21' 03' 52.6"  
L = 48.50'  
T = 24.31'  
R = 272.00'

PI Sta 39+22.11  
Δ = 116° 14' 31.4" (RT)  
D = 71' 37' 11.0"  
L = 109.29'  
T = 162.63'  
R = 80.00'

PI Sta 40+76.38  
Δ = 78° 16' 33.1" (LT)  
D = 71' 37' 11.0"  
L = 109.29'  
T = 65.10'  
R = 80.00'

⑪ -Y4- PC 34+31.98  
⑫ -Y4- PT 35+19.68

⑬ -Y4- PC 35+71.98  
⑭ -Y4- PCC 36+82.19  
⑮ -Y4- PT 37+30.68

⑯ -Y4- PC 37+93.48  
⑰ -Y4- PT 39+55.79

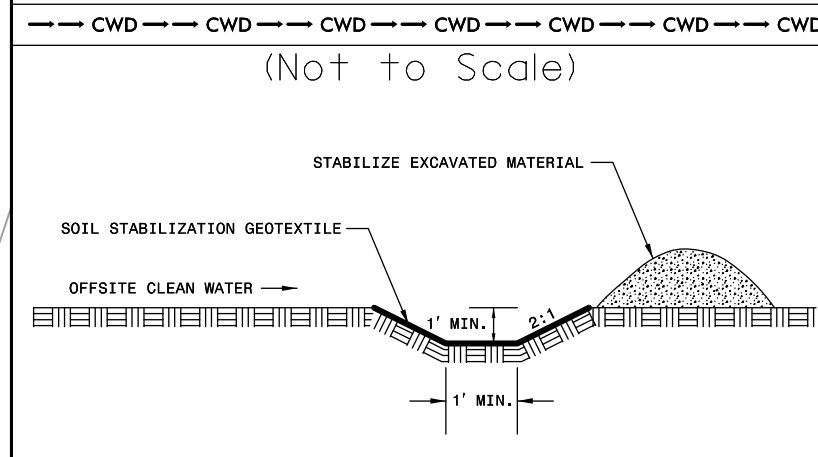
⑱ -Y4- PC 40+11.27

NOTE:  
PLACE TEMPORARY ROCK SEDIMENT DAMS TYPE - B AND TEMPORARY ROCK SILT CHECKS TYPE - A AT DRAINAGE OUTLETS.

CLEARING AND GRUBBING EROSION CONTROL FOR CONSTRUCTION SHEET 26

CLEAN WATER DIVERSIONS ARE INDEPENDENT OF OTHER EC DITCH LINES AND TERMINATE INTO A SC-A.

CLEAN WATER DIVERSION (Not to Scale)

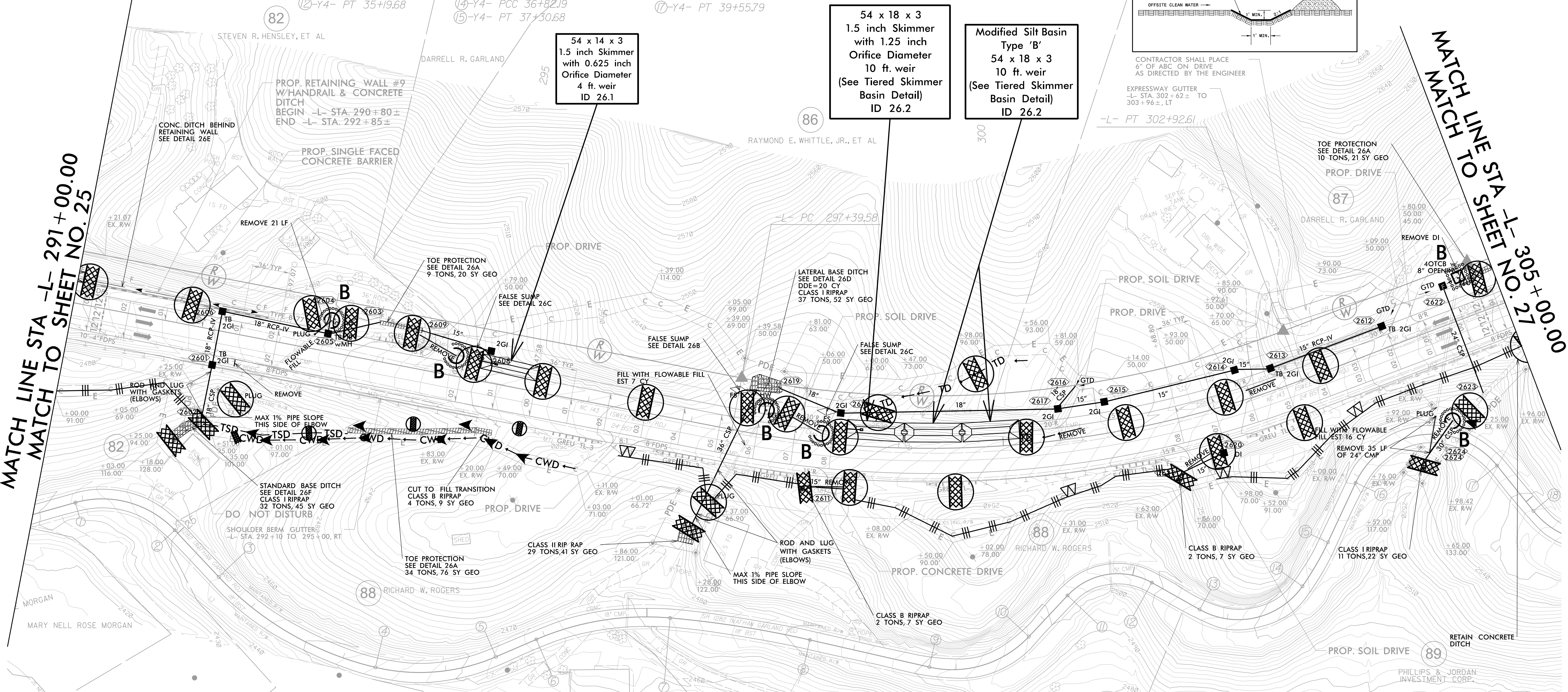


CONTRACTOR SHALL PLACE 6" OF ABC ON DRIVE AS DIRECTED BY THE ENGINEER

EXPRESSWAY CUTTER  
-L- STA. 302+62± TO 303+96±, LT

-L- PT 302+92.61

PROJECT REFERENCE NO. A-0009CB SHEET NO. EC-10/CONST.26  
ROADWAY DESIGN ENGINEER HYDRAULICS ENGINEER  
TGS ENGINEERS 201 W. MARION ST. STE 200 SHELBY, NC 28150 PH (704) 476-0003 CORP. LICENSE NO.: C-0275



MATCH LINE STA -L- 291+00.00  
MATCH TO SHEET NO. 25

MATCH LINE TO SHEET NO. 27  
STA 305+00.00

54 x 14 x 3  
1.5 inch Skimmer  
with 0.625 inch  
Orifice Diameter  
4 ft. weir  
ID 26.1

54 x 18 x 3  
1.5 inch Skimmer  
with 1.25 inch  
Orifice Diameter  
10 ft. weir  
(See Tiered Skimmer  
Basin Detail)  
ID 26.2

Modified Silt Basin  
Type 'B'  
54 x 18 x 3  
10 ft. weir  
(See Tiered Skimmer  
Basin Detail)  
ID 26.2

