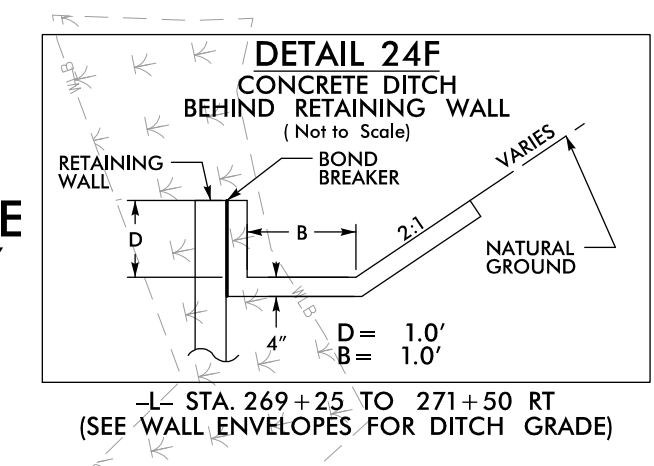
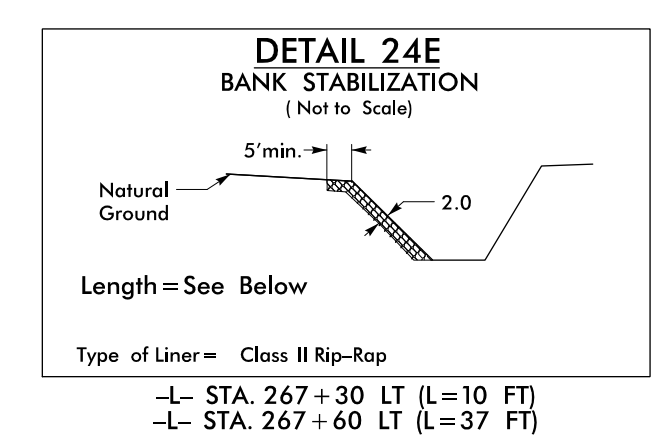
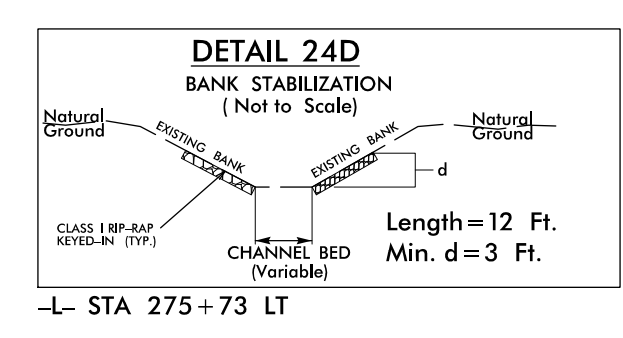
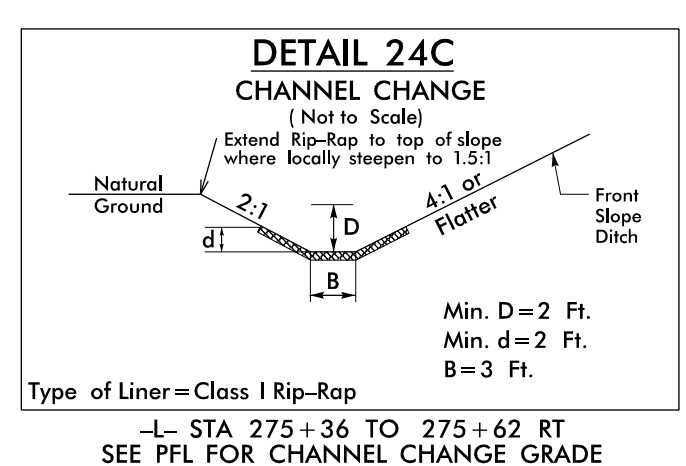
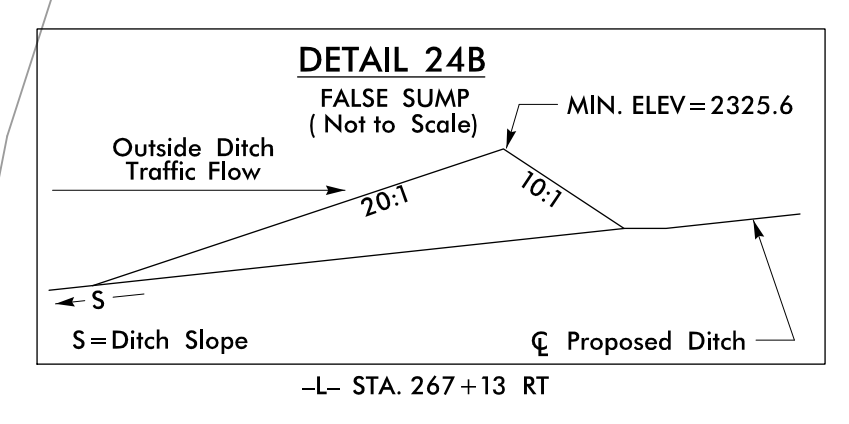
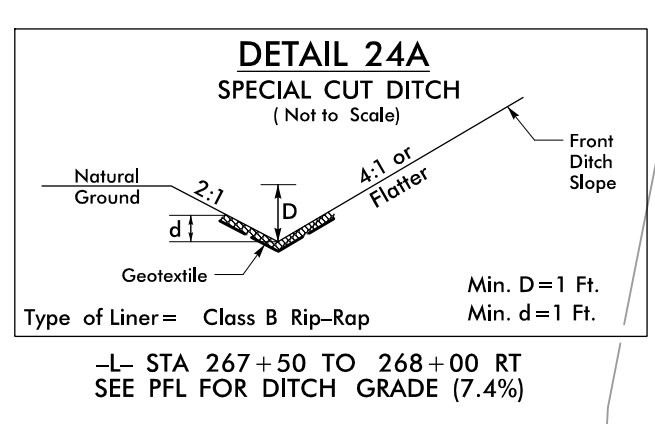


-L- CURVE DATA

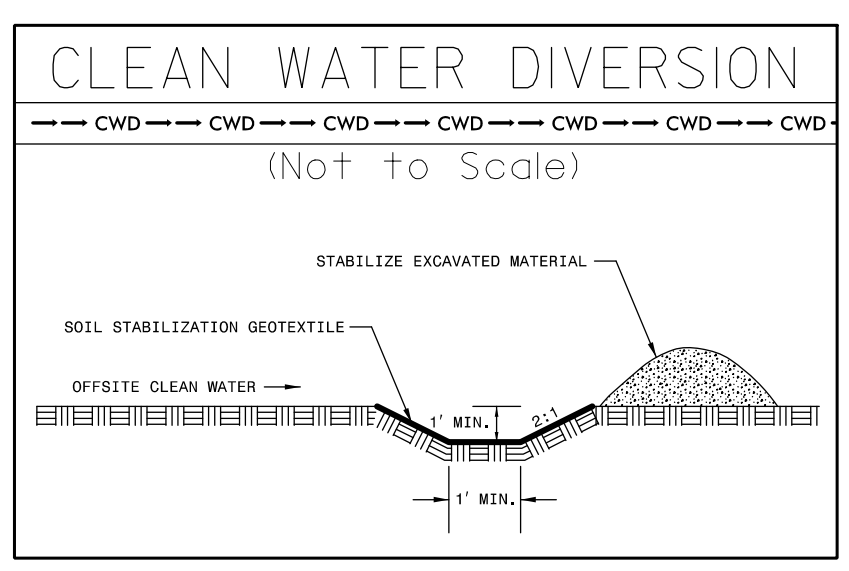
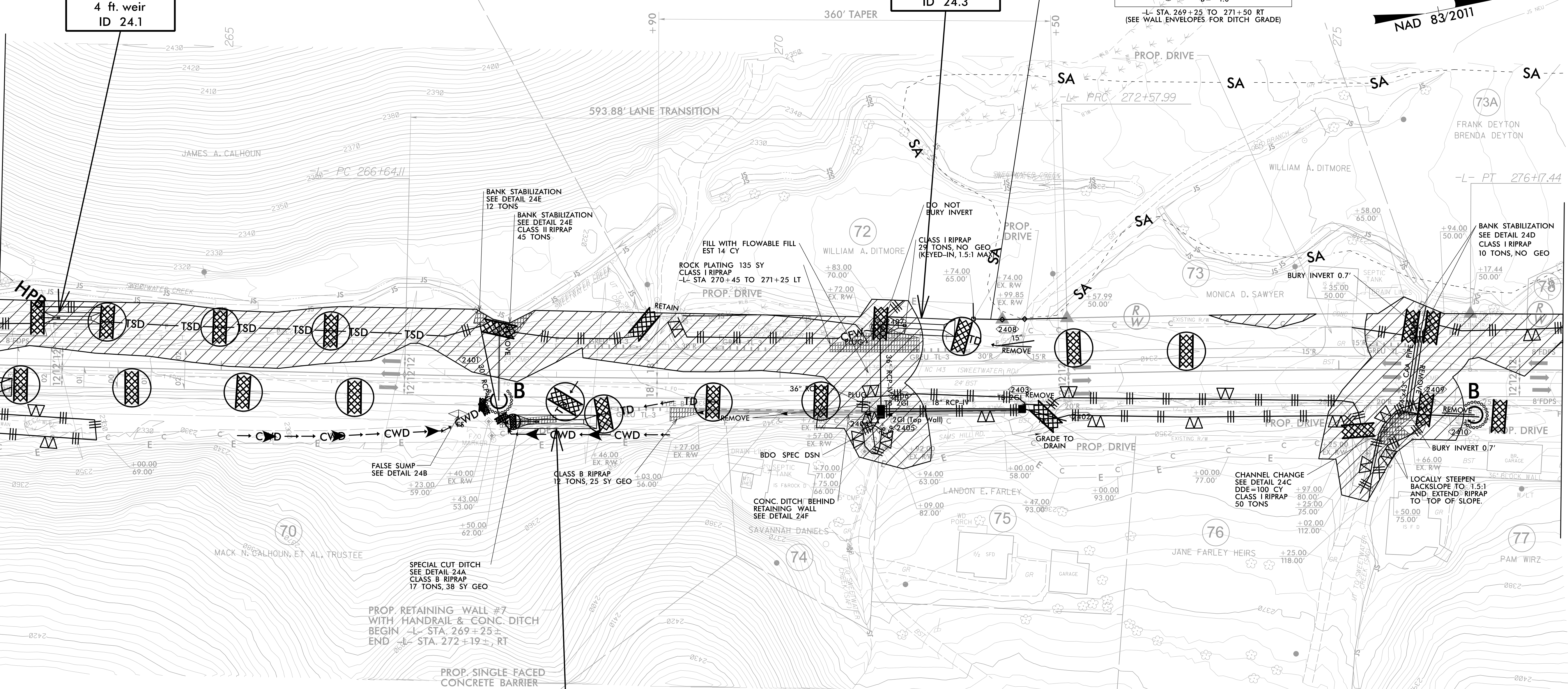
PI Sta 269+61.11	PI Sta 274+37.73
$\Delta = 2' 50'' 08.0'' (LT)$	$\Delta = 1' 42'' 58.4'' (RT)$
$D = 0' 28'' 38.9''$	$D = 0' 28'' 38.9''$
$L = 593.88'$	$L = 359.44'$
$T = 297.00'$	$T = 179.74'$
$R = 12,000.00'$	$R = 12,000.00'$
SE = NC	SE = NC
DS = 60 MPH	DS = 60 MPH



PROJECT REFERENCE NO.	SHEET NO.
A-0009CB	EC-08/CONST.24
RW SHEET NO.	
ROADWAY DESIGN ENGINEER	HYDRAULICS ENGINEER
TGS ENGINEERS 201 W. MARION ST-STE 200 SHELBY, NC 28150 PH (704) 476-0003 CORP. LICENSE NO.: C-0275	

MATCH LINE STA -L- 263+00.00
MATCH TO SHEET NO. 23

MATCH LINE STA -L- 277+00.00
MATCH TO SHEET NO. 25



CLEAN WATER DIVERSIONS ARE INDEPENDENT OF OTHER EC DITCH LINES AND TERMINATE INTO A SC-A.

72 x 12 x 2
1.5 inch Skimmer
with 0.5 inch
Orifice Diameter
4 ft. weir
ID 24.2

60 x 15 x 3
1.5 inch Skimmer
with 0.75 inch
Orifice Diameter
4 ft. weir
ID 24.3

50 x 10 x 3
1.5 inch Skimmer
with 0.5 inch
Orifice Diameter
4 ft. weir
ID 24.1

INSTALL PIPE(S) IN JURISDICTIONAL AREAS WITHOUT IMPACTING STREAM UNTIL AREA STABILIZED AND ACCORDING TO NCDOT BEST MANAGEMENT PRACTICES FOR CONSTRUCTION AND MAINTENANCE ACTIVITIES MANUAL.

ENVIRONMENTALLY SENSITIVE AREA
SEE PROJECT SPECIAL PROVISIONS

SAFETY FENCE
CLEARING AND GRUBBING
EROSION CONTROL FOR
CONSTRUCTION SHEET 24

NOTE:
PLACE TEMPORARY ROCK SEDIMENT DAMS TYPE - B
AND TEMPORARY ROCK SILT CHECKS TYPE - A AT
DRAINAGE OUTLETS.