
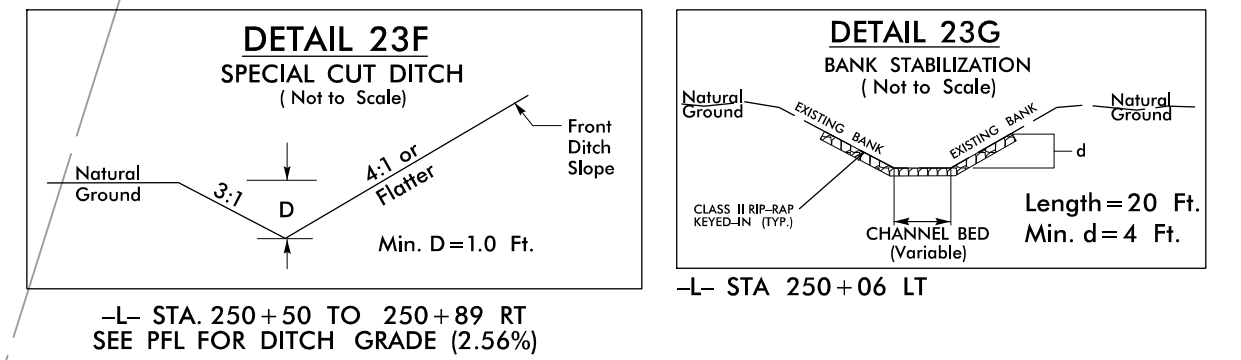
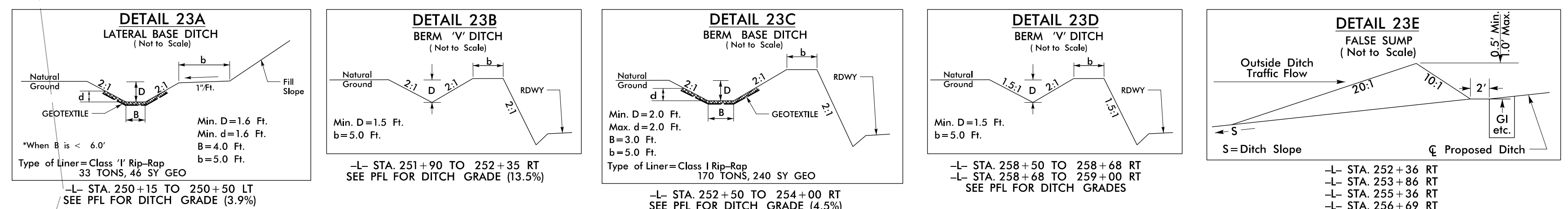
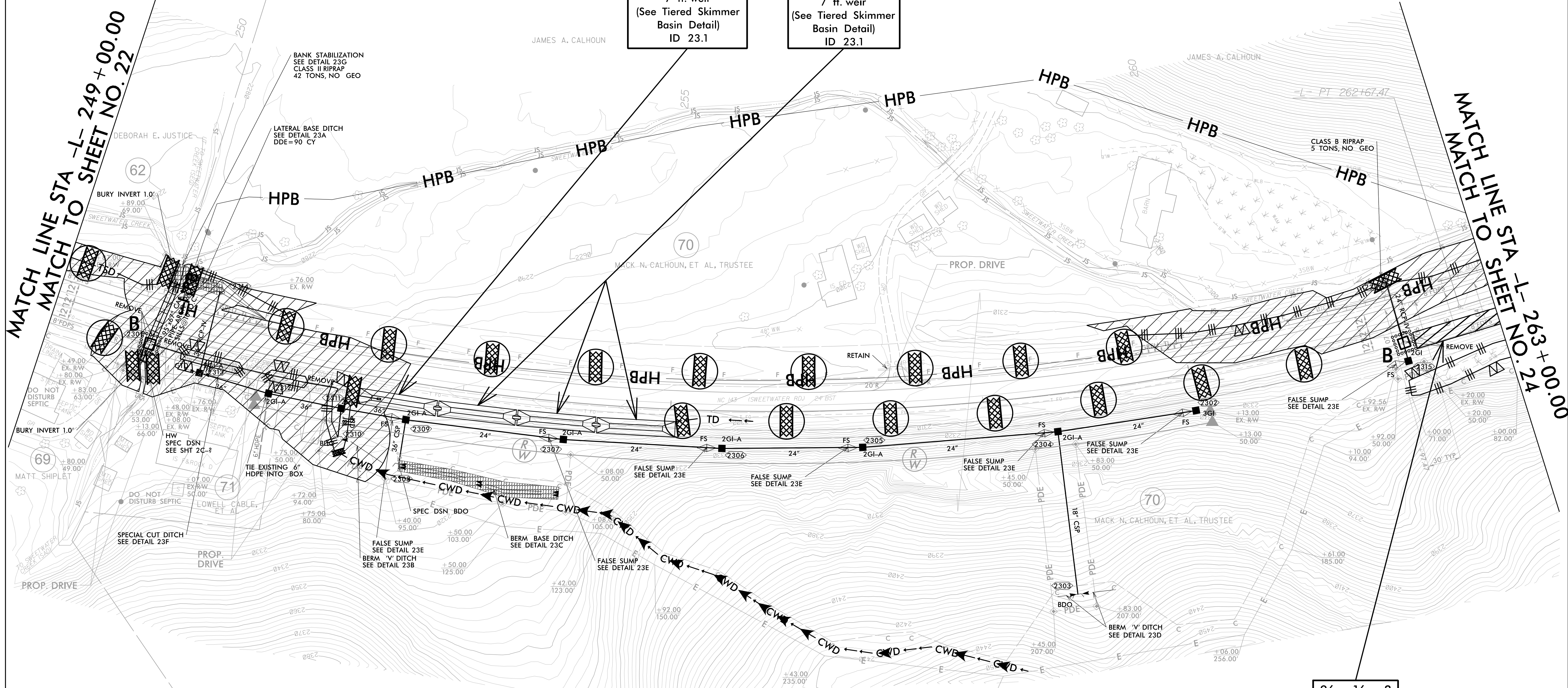


PROJECT REFERENCE NO. A-0009CB	SHEET NO. EC-07/CONST.23
RW SHEET NO.	
ROADWAY DESIGN ENGINEER	HYDRAULICS ENGINEER
 <b>TGS ENGINEERS</b> 201 W. MARION ST-STE 200 SHELBY, NC 28150 PH (704) 476-0003 CORP. LICENSE NO.: C-0275	



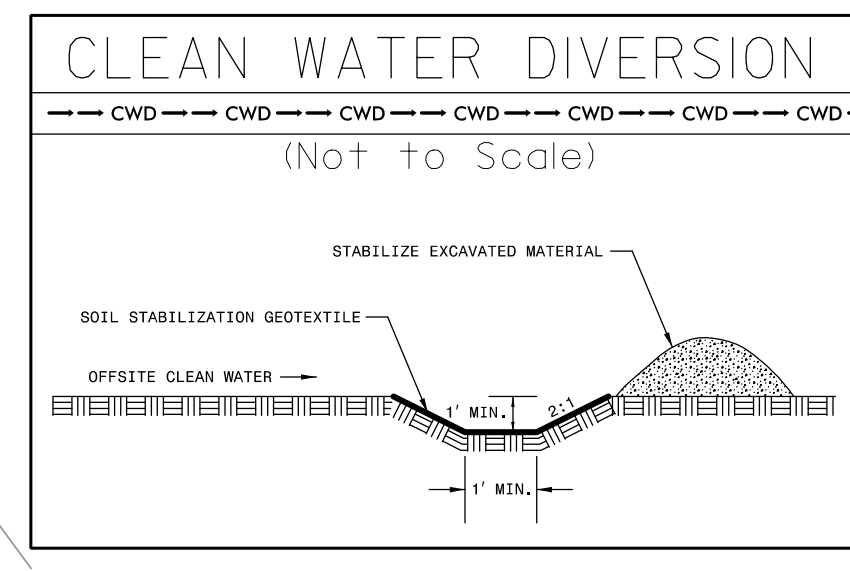
75 x 15 x 2  
1.5 inch Skimmer  
with 0.625 inch  
Orifice Diameter  
7 ft. weir  
(See Tiered Skimmer  
Basin Detail)  
ID 23.1

Modified Silt Basin  
Type 'B'  
75 x 15 x 2  
7 ft. weir  
(See Tiered Skimmer  
Basin Detail)  
ID 23.1



MATCH LINE STA -L- 249+00.00  
MATCH TO SHEET NO. 22

MATCH LINE TO SHEET NO. 24  
-L- 263+00.00



CLEAN WATER DIVERSIONS ARE INDEPENDENT OF OTHER EC DITCH LINES AND TERMINATE INTO A SC-A.

CLEARING AND GRUBBING EROSION CONTROL FOR CONSTRUCTION SHEET 23

INSTALL PIPE(S) IN JURISDICTIONAL AREAS WITHOUT IMPACTING STREAM UNTIL AREA STABILIZED AND ACCORDING TO NCDOT BEST MANAGEMENT PRACTICES FOR CONSTRUCTION AND MAINTENANCE ACTIVITIES MANUAL.

NOTE: PLACE TEMPORARY ROCK SEDIMENT DAMS TYPE - B AND TEMPORARY ROCK SILT CHECKS TYPE - A AT DRAINAGE OUTLETS.

 ENVIRONMENTALLY SENSITIVE AREA  
SEE PROJECT SPECIAL PROVISIONS

96 x 16 x 2  
ID 23.3