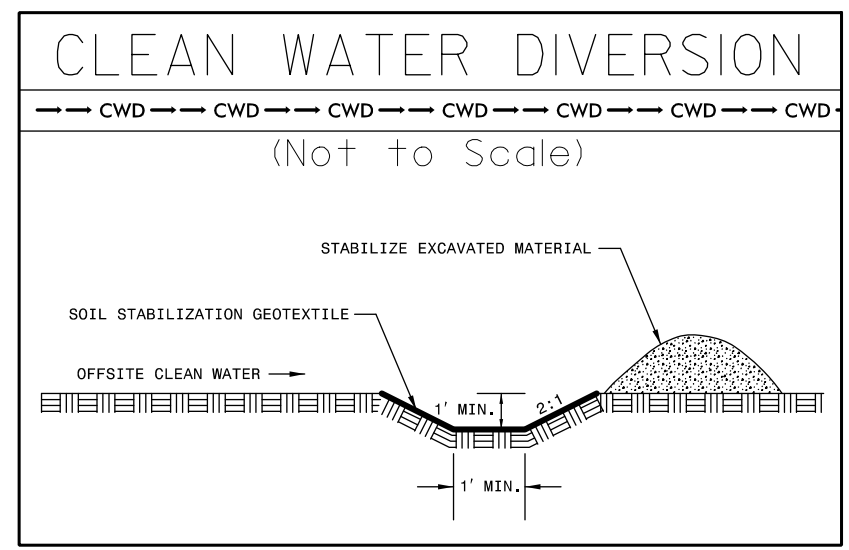


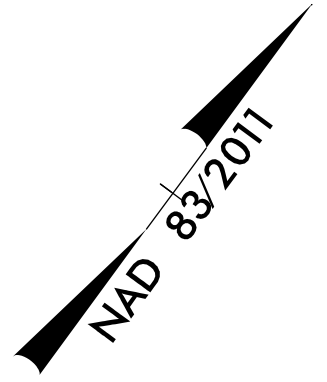
**-L- CURVE DATA**

PI Sta 234+84.86	PI Sta 255+20.12
$\Delta = 12^\circ 40' 17.1''$ (RT)	$\Delta = 40^\circ 44' 05.0''$ (LT)
$D = 1^\circ 54' 35.5''$	$D = 2^\circ 36' 15.7''$
$L = 663.47'$	$L = 1,564.10'$
$T = 333.10'$	$T = 816.75'$
$R = 3,000.00'$	$R = 2,200.00'$
$SE = 0.05$	$SE = 0.07$
$DS = 60$ MPH	$DS = 60$ MPH



CLEAN WATER DIVERSIONS ARE INDEPENDENT OF OTHER EC DITCH LINES AND TERMINATE INTO A SC-A.

INSTALL PIPE(S) IN JURISDICTIONAL AREAS WITHOUT IMPACTING STREAM UNTIL AREA STABILIZED AND ACCORDING TO NCDOT BEST MANAGEMENT PRACTICES FOR CONSTRUCTION AND MAINTENANCE ACTIVITIES MANUAL.



PROJECT REFERENCE NO. A-0009CB	SHEET NO. EC-06/CONST.22
ROADWAY DESIGN ENGINEER	HYDRAULICS ENGINEER
TGS ENGINEERS 201 W. MARION ST-STE 200 SHELBY, NC 28150 PH (704) 476-0003 CORP. LICENSE NO.: C-0275	

40 x 10 x 3  
1.5 inch Skimmer  
with 0.375 inch  
Orifice Diameter  
4 ft. weir  
ID 22.1

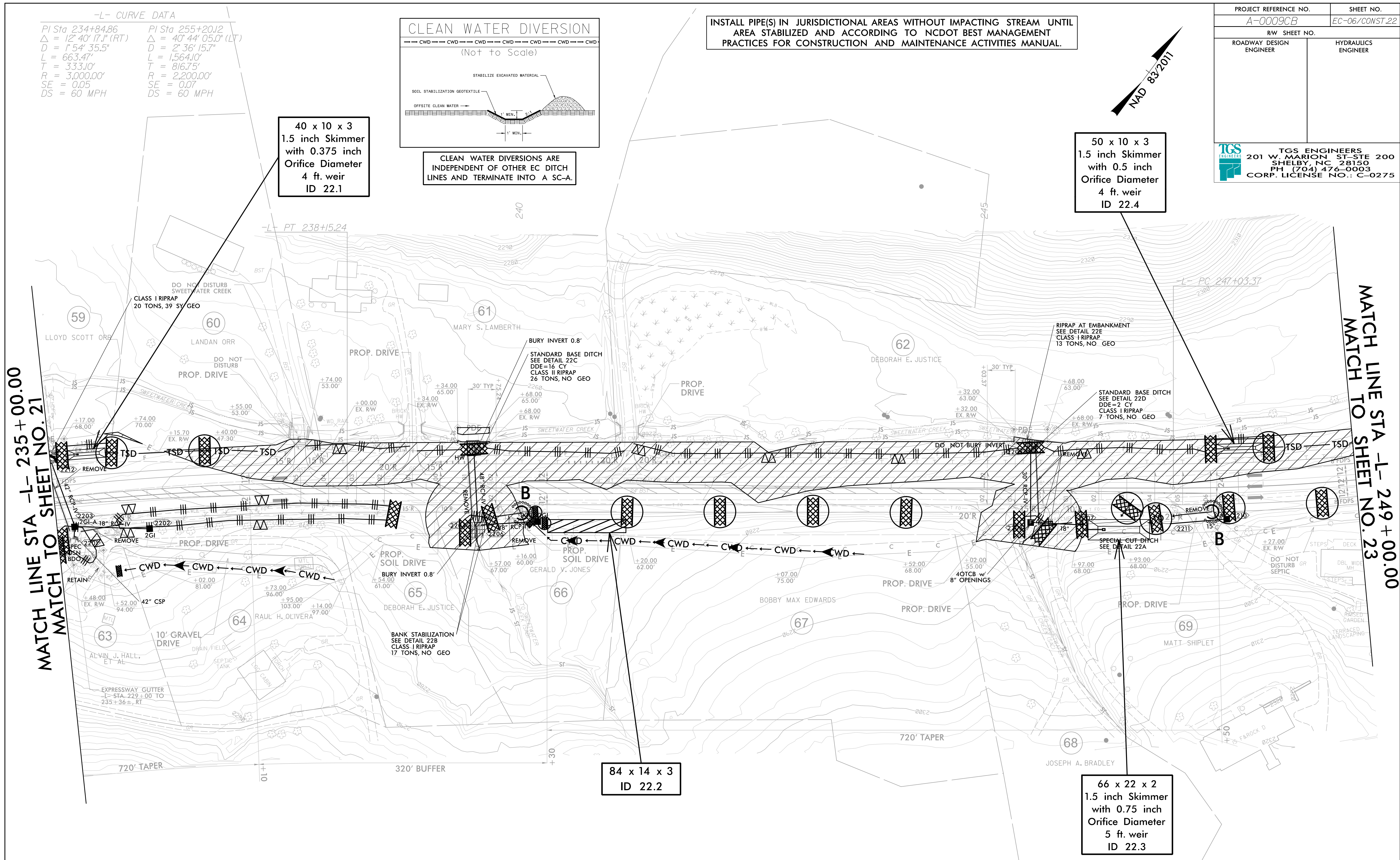
50 x 10 x 3  
1.5 inch Skimmer  
with 0.5 inch  
Orifice Diameter  
4 ft. weir  
ID 22.4

84 x 14 x 3  
ID 22.2

66 x 22 x 2  
1.5 inch Skimmer  
with 0.75 inch  
Orifice Diameter  
5 ft. weir  
ID 22.3

MATCH LINE STA -L- 235+00.00  
MATCH TO SHEET NO. 21

MATCH LINE STA -L- 249+00.00  
MATCH TO SHEET NO. 23



CLEARING AND GRUBBING  
EROSION CONTROL FOR  
CONSTRUCTION SHEET 22

NOTE:  
PLACE TEMPORARY ROCK SEDIMENT DAMS TYPE - B  
AND TEMPORARY ROCK SILT CHECKS TYPE - A AT  
DRAINAGE OUTLETS.

ENVIRONMENTALLY SENSITIVE AREA  
SEE PROJECT SPECIAL PROVISIONS

