
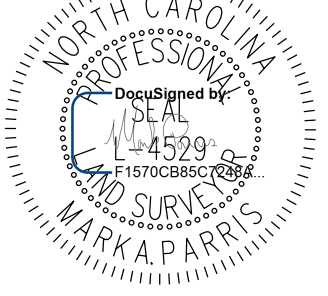


-L- CURVE DATA

PI Sta 360+98.29	PI Sta 366+19.09
$\Delta = 31^{\circ} 53' 08.6''$ (RT)	$\Delta = 29^{\circ} 36' 56.5''$ (LT)
D = 7' 32' 20.1"	D = 7' 32' 20.1"
L = 422.95'	L = 392.84'
T = 217.11'	T = 200.91'
R = 760.00'	R = 760.00'

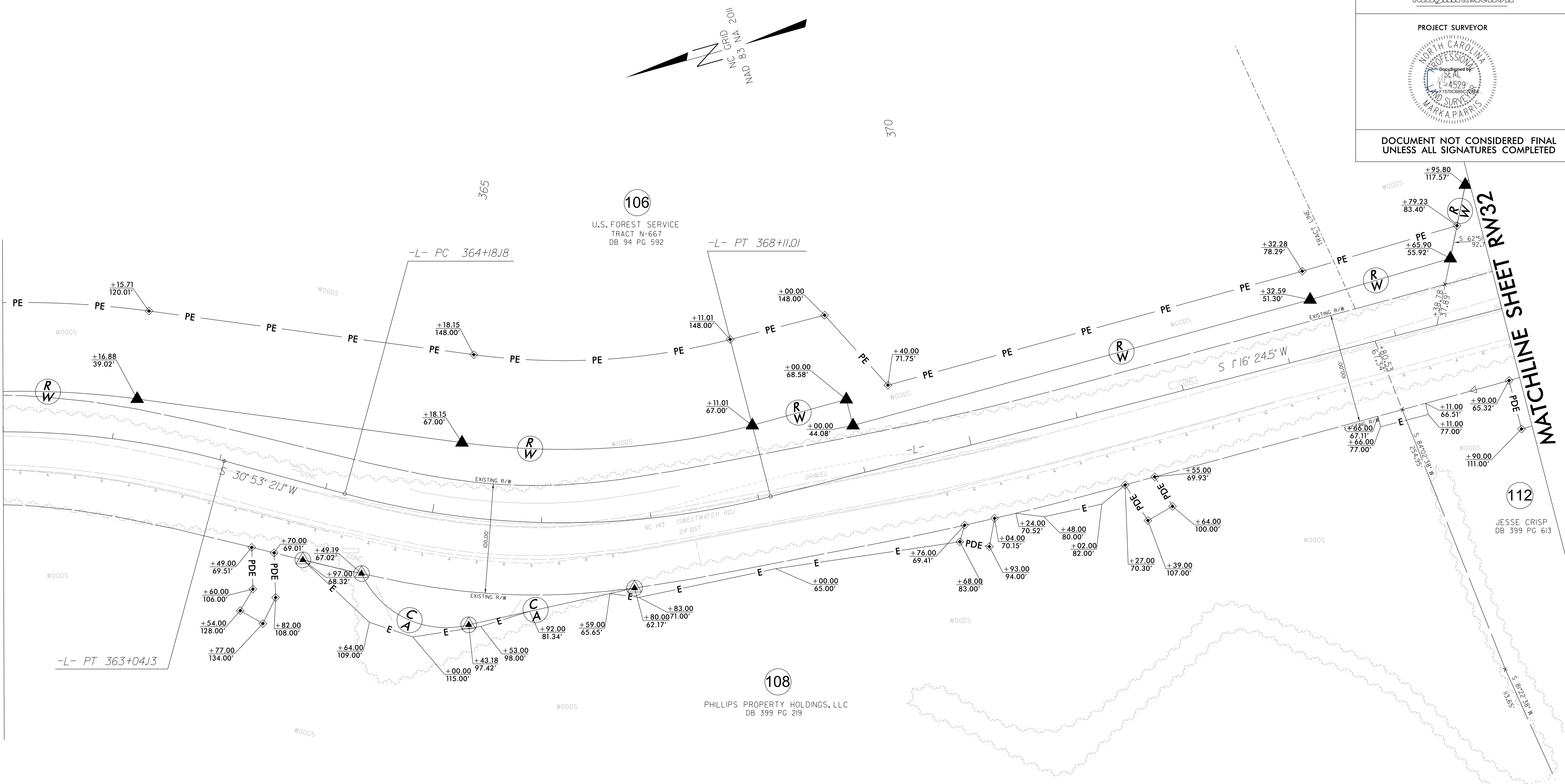
I, Mark A. Parris, certify that the right of way and permanent easement monumentation for this project shown herein was completed under my direct and responsible charge from an actual survey made under my supervision; that all horizontal closures had a minimum ratio of precision of 1:10,000 (Class A). Field work was performed from 8/30/21 to 11/12/21, and all coordinates are based on NAD83/2011. That this survey was performed to meet the requirements of 21NCAC 56.1600 as applicable.

This is a true and correct copy of the original as shown on the field notes.
 Mark A. Parris
 Professional Land Surveyor L-4529

PROJECT REFERENCE NO.	SHEET NO.
A-0009CB	RW31
Location and Surveys	
	
PROJECT SURVEYOR	
	
DOCUMENT NOT CONSIDERED FINAL UNLESS ALL SIGNATURES COMPLETED	

MATCHLINE SHEET RW30

MATCHLINE SHEET RW32



REVISIONS

O:\JUN-2022_09\21-A-0009CB\Drawings\Survey\RW and Control Sheets\A-0009CB\A-0009CB-1s-RW31.dgn
 V:\NCS\Survey\21-A-0009CB\Drawings\Survey\RW and Control Sheets\A-0009CB\A-0009CB-1s-RW31.dgn
 J. Gordon

NOTES:

1. IF FURTHER INFORMATION REGARDING PROJECT CONTROL IS NEEDED PLEASE CONTACT THE LOCATION AND SURVEYS UNIT.
2. PROJECT CONTROL WAS ESTABLISHED USING GNSS, THE GLOBAL NAVIGATION SATELLITE SYSTEM.
3. RIGHT OF WAY MONUMENTATION ESTABLISHED 8/30/21 TO 11/12/21.