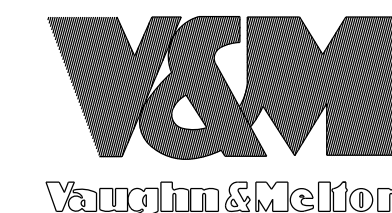
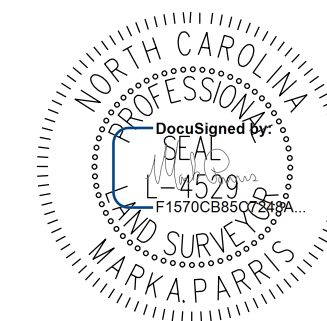


Location and Surveys



PROJECT SURVEYOR



DOCUMENT NOT CONSIDERED FINAL UNLESS ALL SIGNATURES COMPLETED

I, Mark A. Parris, certify that the right of way and permanent easement monumentation for this project shown herein was completed under my direct and responsible charge from an actual survey made under my supervision; that all horizontal closures had a minimum ratio of precision of 1:10,000 (Class A). Field work was performed from 8/30/21 to 11/12/21, and all coordinates are based on NAD83/2011; That this survey was performed to meet the requirements of 21NCAC 56.1600 as applicable.  
This 15th day of November, 2021.  
Professional Land Surveyor L-4529

-L- CURVE DATA

PI Sta 300+23.36  
Δ = 31° 41' 09.8" (LT)  
D = 5° 43' 46.5"  
L = 553.03'  
T = 283.78'  
R = 1,000.00'

PI Sta 24+49.98  
Δ = 62° 22' 39.1" (RT)  
D = 60° 18' 40.8"  
L = 103.43'  
T = 57.51'  
R = 95.00'

PI Sta 26+47.22  
Δ = 33° 27' 29.8" (LT)  
D = 19° 05' 54.9"  
L = 175.19'  
T = 90.17'  
R = 300.00'

-Y4- CURVE DATA

PI Sta 27+92.98  
Δ = 36° 32' 32.0" (LT)  
D = 31° 08' 20.4"  
L = 117.35'  
T = 60.75'  
R = 184.00'

PI Sta 29+58.22  
Δ = 28° 20' 20.0" (RT)  
D = 21° 42' 10.6"  
L = 130.58'  
T = 66.65'  
R = 264.00'

PI Sta 30+89.80  
Δ = 7° 44' 28.4" (RT)  
D = 5° 43' 46.5"  
L = 135.11'  
T = 67.66'  
R = 1,000.00'

PI Sta 33+31.35  
Δ = 59° 32' 46.6" (LT)  
D = 57° 17' 44.8"  
L = 103.93'  
T = 57.21'  
R = 100.00'

① -Y4- PC 23+92.47  
② -Y4- PT 24+95.90

③ -Y4- PC 25+57.05  
④ -Y4- PCC 27+32.23  
⑤ -Y4- PT 28+49.59

⑥ -Y4- PC 28+91.56  
⑦ -Y4- PCC 30+22.14  
⑧ -Y4- PT 31+57.25

⑨ -Y4- PC 32+74.14  
⑩ -Y4- PT 33+78.07

PI Sta 34+83.66  
Δ = 76° 08' 00.0" (RT)  
D = 86° 48' 42.4"  
L = 87.70'  
T = 51.69'  
R = 66.00'

PI Sta 36+39.74  
Δ = 84° 11' 34.2" (LT)  
D = 76° 23' 39.7"  
L = 110.21'  
T = 67.76'  
R = 75.00'

PI Sta 37+06.50  
Δ = 10° 12' 57.1" (LT)  
D = 21° 03' 52.6"  
L = 48.50'  
T = 24.31'  
R = 272.00'

PI Sta 39+22.11  
Δ = 116° 14' 31.4" (RT)  
D = 71° 37' 11.0"  
L = 162.30'  
T = 128.63'  
R = 80.00'

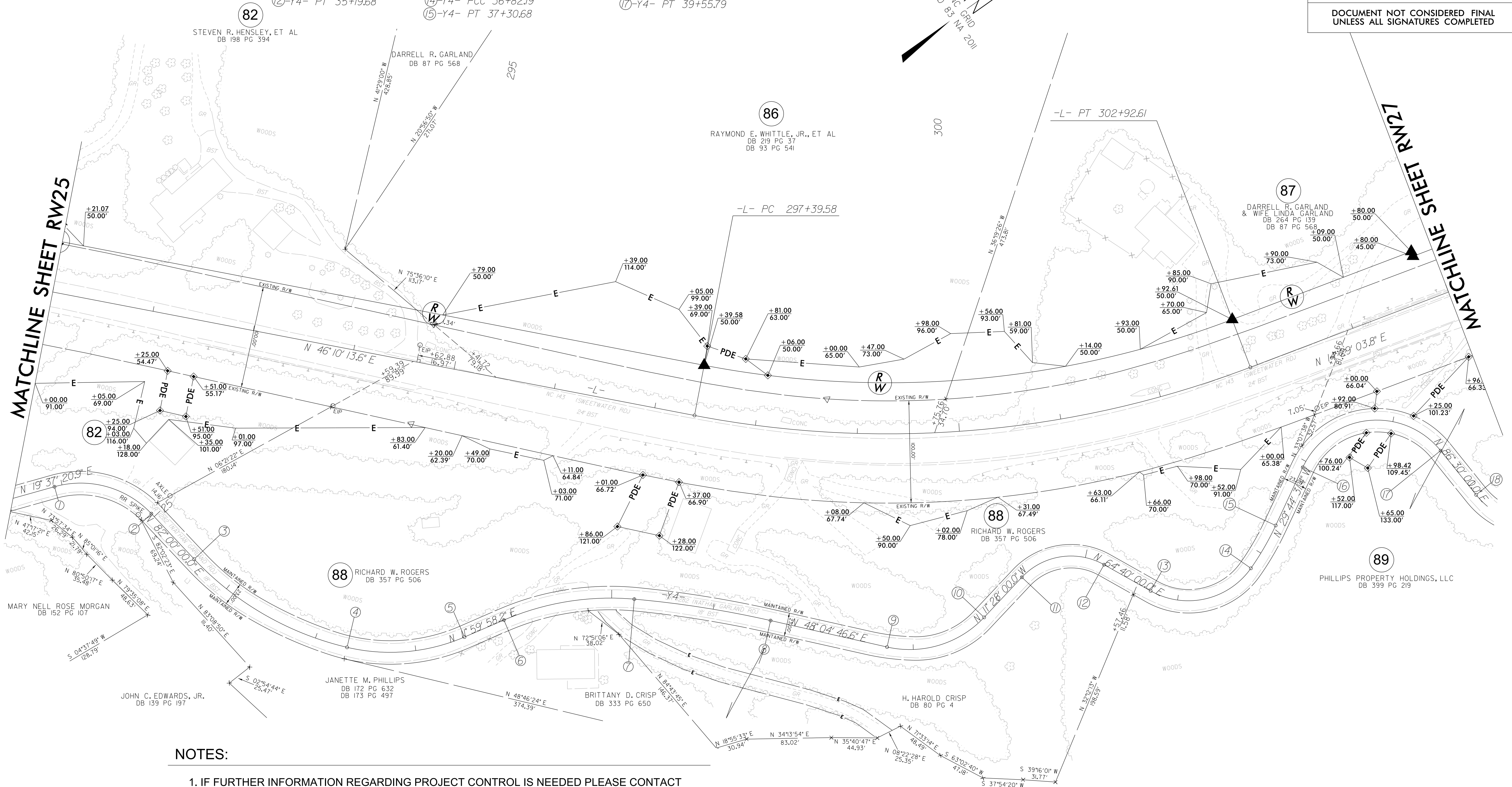
PI Sta 40+76.38  
Δ = 78° 16' 33.1" (LT)  
D = 71° 37' 11.0"  
L = 109.29'  
T = 65.10'  
R = 80.00'

⑪ -Y4- PC 34+31.98  
⑫ -Y4- PT 35+19.68

⑬ -Y4- PC 35+71.98  
⑭ -Y4- PCC 36+82.19  
⑮ -Y4- PT 37+30.68

⑯ -Y4- PC 37+93.48  
⑰ -Y4- PT 39+55.79

⑱ -Y4- PC 40+11.27



NOTES:

1. IF FURTHER INFORMATION REGARDING PROJECT CONTROL IS NEEDED PLEASE CONTACT THE LOCATION AND SURVEYS UNIT.
2. PROJECT CONTROL WAS ESTABLISHED USING GNSS, THE GLOBAL NAVIGATION SATELLITE SYSTEM.
3. RIGHT OF WAY MONUMENTATION ESTABLISHED 8/30/21 TO 11/12/21.

REVISIONS

01 JUN 2022 09:32 V:\NCS\Survey\RDW Staking\Survey\RW and Control Sheets\A-0009CB\A-0009CB.1.s.RW26.dgn  
11-21-A-0009CB-1-HI-29  
11-21-A-0009CB-1-HI-29  
legordon