

-L- CURVE DATA

PI Sta 287+55.00
Δ = 34° 15' 00.8" (RT)
D = 5' 58" 05.9"
L = 573.87'
T = 295.80'
R = 960.00'

PI Sta 11+11.35
Δ = 55° 08' 53.6" (LT)
D = 7' 37" 11.0"
L = 77.00'
T = 41.78'
R = 80.00'

PI Sta 20+66.90
Δ = 83° 23' 00.0" (RT)
D = 76' 23" 39.7"
L = 109.15'
T = 66.80'
R = 75.00'

PI Sta 22+09.11
Δ = 55° 15' 43.9" (LT)
D = 60' 18" 40.8"
L = 91.63'
T = 49.73'
R = 95.00'

PI Sta 22+91.14
Δ = 23° 50' 55.2" (LT)
D = 30' 09" 20.4"
L = 79.09'
T = 40.12'
R = 190.00'

- ① -Y4- PC 10+69.57
- ② -Y4- PT 11+46.57
- ③ -Y4- PC 20+00.10
- ④ -Y4- PT 21+09.25
- ⑤ -Y4- PC 21+59.38
- ⑥ -Y4- PCC 22+51.01
- ⑦ -Y4- PT 23+30.10

I, Mark A. Paris, certify that the right of way and permanent easement monumentation for this project shown herein was completed under my direct and responsible charge from an actual survey made under my supervision; that all horizontal closures had a minimum ratio of precision of 1:10,000 (Class A). Field work was performed from 8/30/21 to 11/12/21, and all coordinates are based on NAD83/2011; That this survey was performed to meet the requirements of 21 NCAC 56.1600 as applicable.

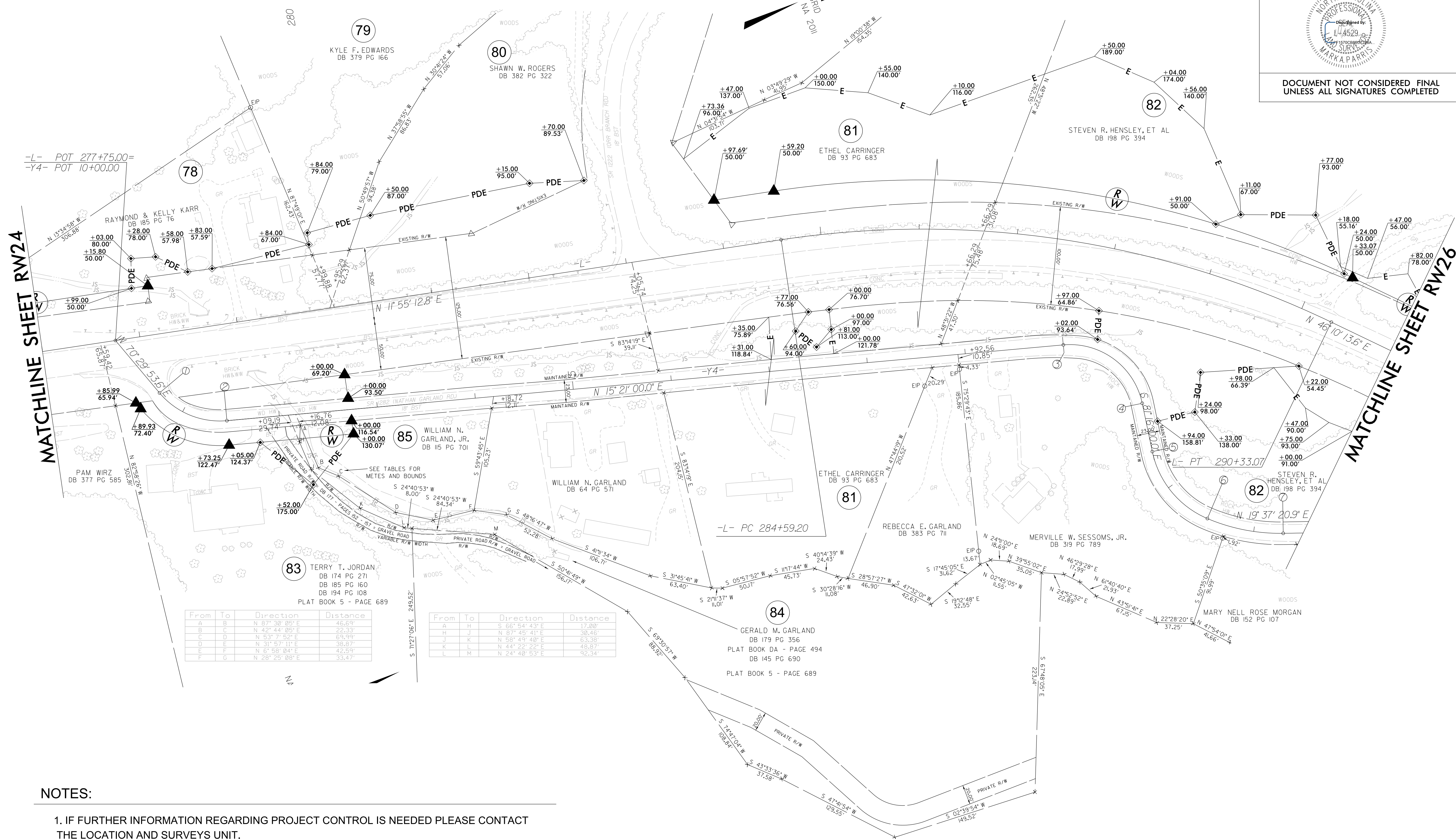
This 15th day of November, 2021.
Professional Land Surveyor L-4529

PROJECT REFERENCE NO. A-0009CB SHEET NO. RW25

Location and Surveys

PROJECT SURVEYOR

DOCUMENT NOT CONSIDERED FINAL UNLESS ALL SIGNATURES COMPLETED



From	To	Direction	Distance
A	B	N 87° 30' 05" E	46.69'
B	C	N 42° 44' 05" E	22.33'
C	D	N 53° 7' 52" E	69.99'
D	E	N 31° 57' 11" E	38.87'
E	F	N 6° 58' 04" E	42.59'
F	G	N 28° 25' 08" E	33.47'

From	To	Direction	Distance
A	H	S 66° 54' 43" E	17.00'
H	J	N 87° 45' 41" E	30.46'
J	K	N 58° 49' 40" E	63.38'
K	L	N 44° 22' 22" E	48.87'
L	M	N 24° 40' 53" E	92.34'

NOTES:

1. IF FURTHER INFORMATION REGARDING PROJECT CONTROL IS NEEDED PLEASE CONTACT THE LOCATION AND SURVEYS UNIT.
2. PROJECT CONTROL WAS ESTABLISHED USING GNSS, THE GLOBAL NAVIGATION SATELLITE SYSTEM.
3. RIGHT OF WAY MONUMENTATION ESTABLISHED 8/30/21 TO 11/12/21.

REVISIONS

D:\JUN_2022_09_29_V:\NCSurvey\Projects\112-21-A-0009CB\Control Sheets\A-0009CB\0009CB.Ls.RW25.dgn