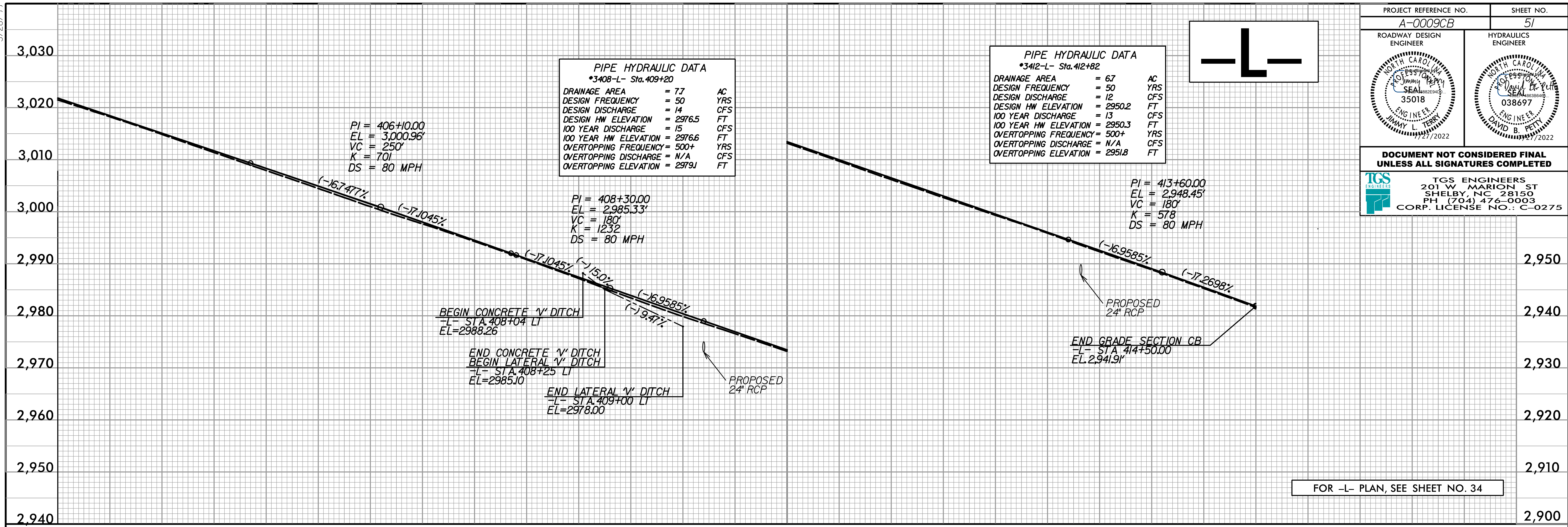


5/28/22

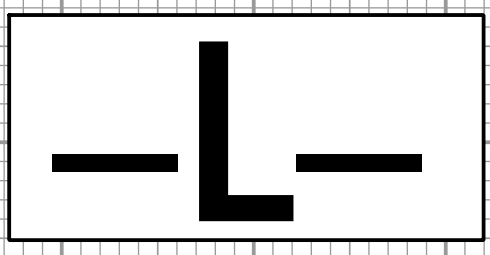


PIPE HYDRAULIC DATA
*3408-L- Sta. 409+20

DRAINAGE AREA	= 7.7	AC
DESIGN FREQUENCY	= 50	YRS
DESIGN DISCHARGE	= 14	CFS
DESIGN HW ELEVATION	= 2976.5	FT
100 YEAR DISCHARGE	= 15	CFS
100 YEAR HW ELEVATION	= 2976.6	FT
OVERTOPPING FREQUENCY	= 500+	YRS
OVERTOPPING DISCHARGE	= N/A	CFS
OVERTOPPING ELEVATION	= 2979J	FT

PIPE HYDRAULIC DATA
*3412-L- Sta. 412+82

DRAINAGE AREA	= 67	AC
DESIGN FREQUENCY	= 50	YRS
DESIGN DISCHARGE	= 12	CFS
DESIGN HW ELEVATION	= 2950.2	FT
100 YEAR DISCHARGE	= 13	CFS
100 YEAR HW ELEVATION	= 2950.3	FT
OVERTOPPING FREQUENCY	= 500+	YRS
OVERTOPPING DISCHARGE	= N/A	CFS
OVERTOPPING ELEVATION	= 2951.8	FT



PROJECT REFERENCE NO. A-0009CB	SHEET NO. 51
ROADWAY DESIGN ENGINEER JIMMY L. TERRY 35018	HYDRAULICS ENGINEER DAVID B. PETTY 038697
DOCUMENT NOT CONSIDERED FINAL UNLESS ALL SIGNATURES COMPLETED	
TGS ENGINEERS 201 W. MARION ST SHELBY, NC 28150 PH (704) 476-0003 CORP. LICENSE NO.: C-0275	

FOR -L- PLAN, SEE SHEET NO. 34

5/19/2022 10:00 AM C:\Users\jerry\OneDrive\Documents\Roadway\Proj\A-0009CB\Plan Sheets\A-0009CB_Rdy_pfl_Sheets.dgn