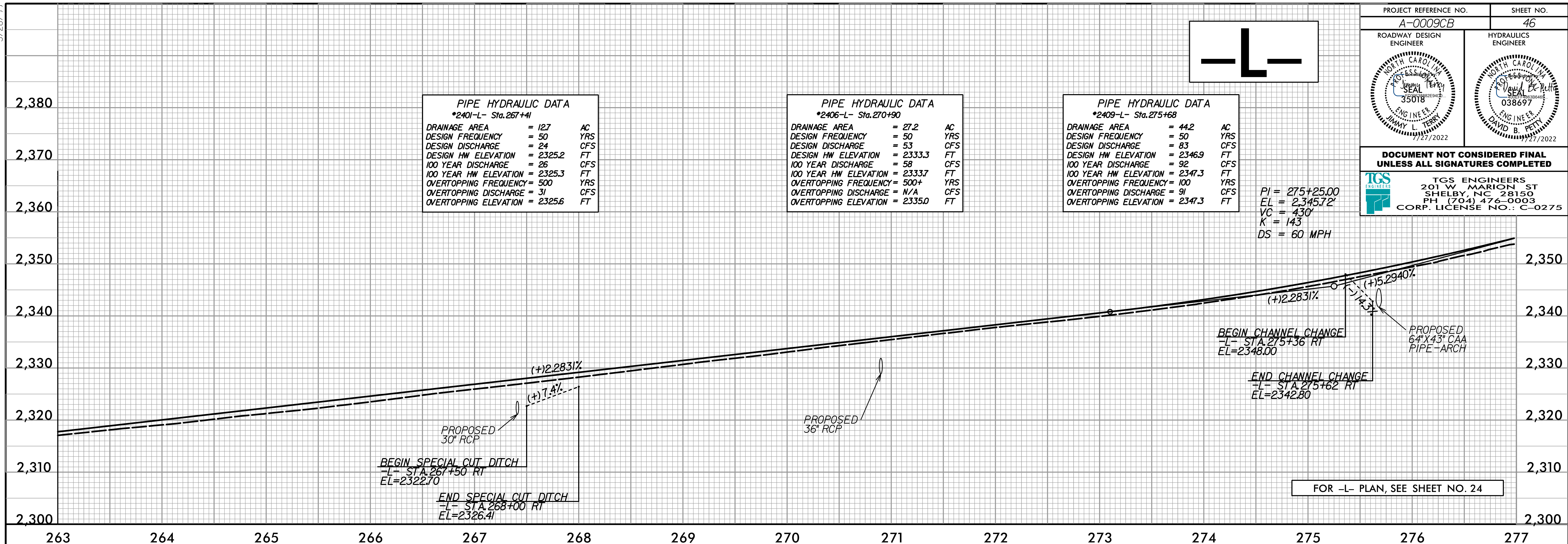


5/28/2022

PROJECT REFERENCE NO. A-0009CB	SHEET NO. 46
ROADWAY DESIGN ENGINEER	HYDRAULICS ENGINEER

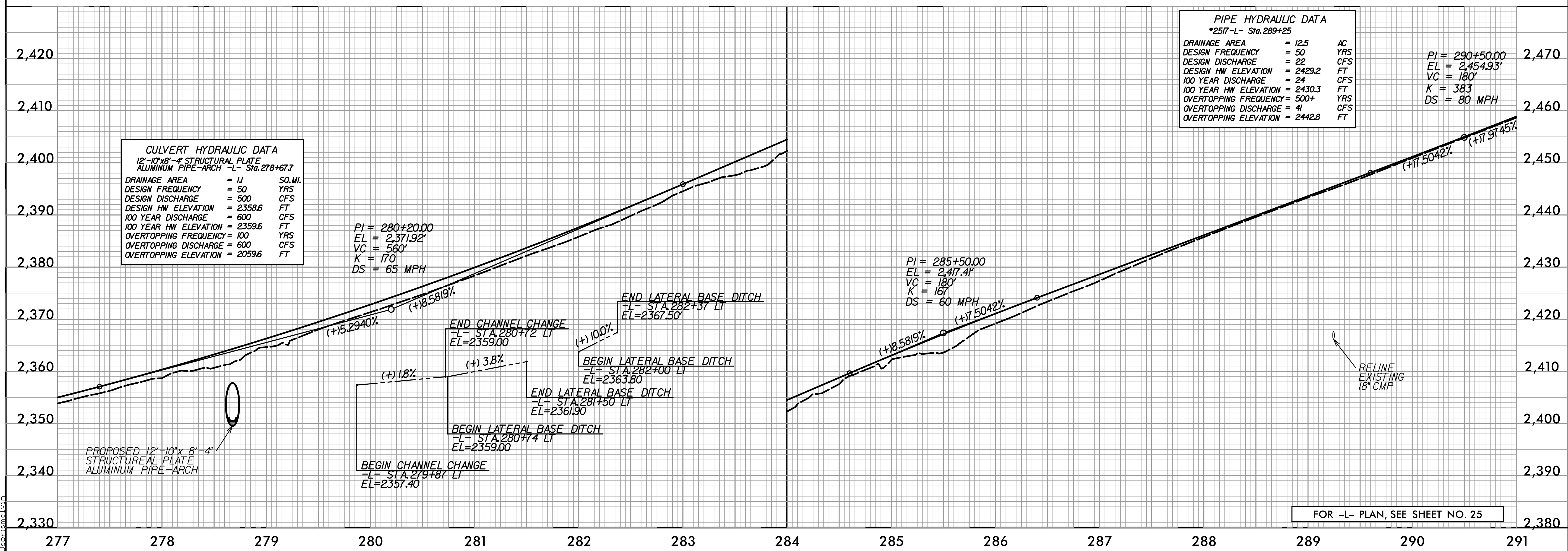
**DOCUMENT NOT CONSIDERED FINAL  
UNLESS ALL SIGNATURES COMPLETED**

**TGS ENGINEERS**  
201 W. MARION ST  
SHELBY, NC 28150  
PH (704) 476-0003  
CORP. LICENSE NO.: C-0275



PI = 275+25.00  
EL = 2,345.72'  
VC = 430'  
K = 143  
DS = 60 MPH

FOR -L- PLAN, SEE SHEET NO. 24



**CULVERT HYDRAULIC DATA**  
12'-10"x8'-4" STRUCTUREAL PLATE  
ALUMINUM PIPE-ARCH -L- Sta. 278+67.7

DRAINAGE AREA	= 11	SQ.MI.
DESIGN FREQUENCY	= 50	YRS
DESIGN DISCHARGE	= 500	CFS
DESIGN HW ELEVATION	= 2358.6	FT
100 YEAR DISCHARGE	= 600	CFS
100 YEAR HW ELEVATION	= 2359.6	FT
OVERTOPPING FREQUENCY	= 100	YRS
OVERTOPPING DISCHARGE	= 600	CFS
OVERTOPPING ELEVATION	= 2059.6	FT

**PIPE HYDRAULIC DATA**  
\*257-L- Sta. 289+25

DRAINAGE AREA	= 125	AC
DESIGN FREQUENCY	= 50	YRS
DESIGN DISCHARGE	= 22	CFS
DESIGN HW ELEVATION	= 2429.2	FT
100 YEAR DISCHARGE	= 24	CFS
100 YEAR HW ELEVATION	= 2430.3	FT
OVERTOPPING FREQUENCY	= 500+	YRS
OVERTOPPING DISCHARGE	= 41	CFS
OVERTOPPING ELEVATION	= 2442.8	FT

PI = 290+50.00  
EL = 2,454.93'  
VC = 180'  
K = 383  
DS = 80 MPH

FOR -L- PLAN, SEE SHEET NO. 25

S:\Projects\Roadway\Proj\A-0009CB\Plan Sheets\A-0009CB\_Rdy\_pfl\_Sheets.dgn