

8/17/99

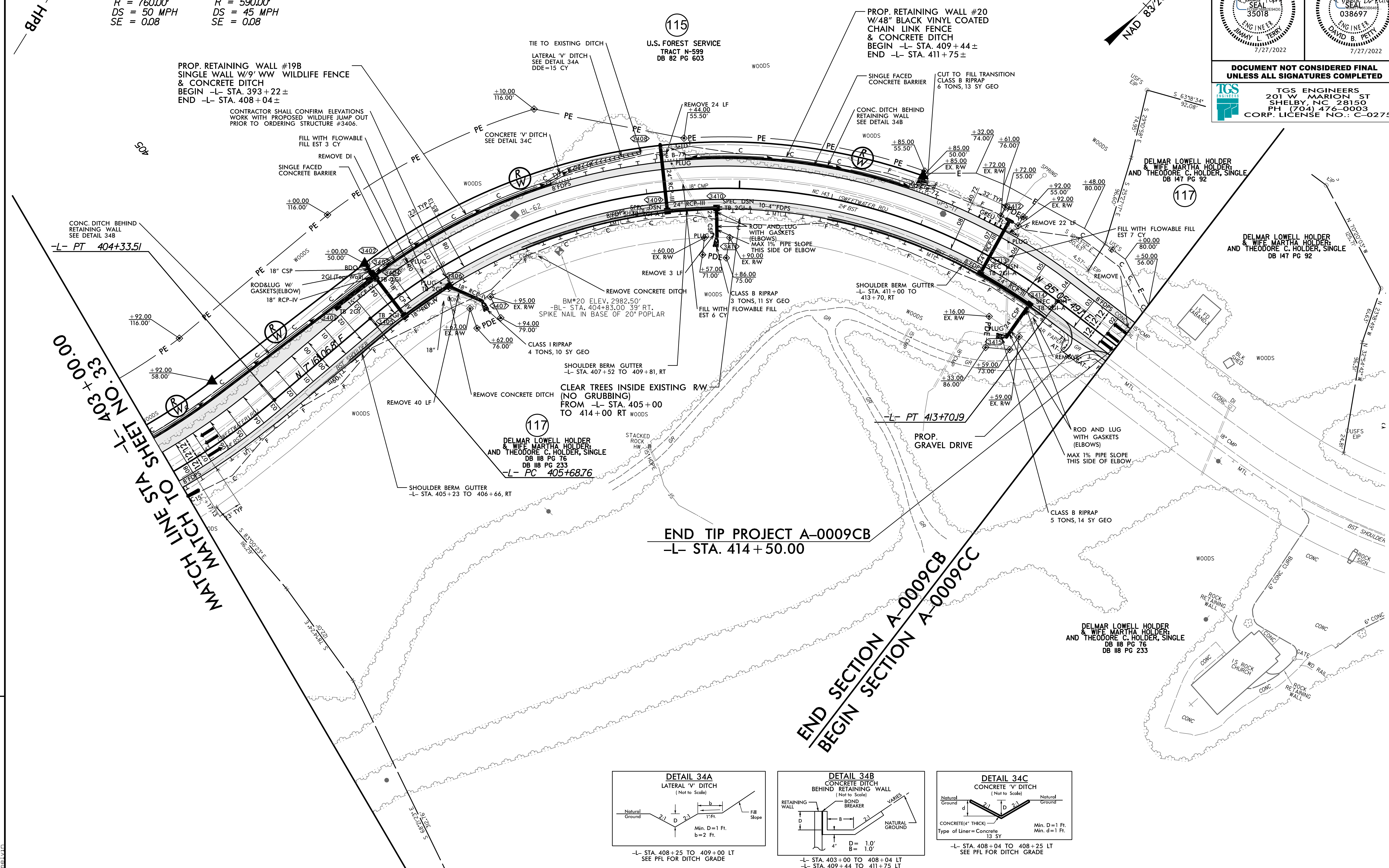
HPB
8dH

-L- CURVE DATA

PI Sta 401+77.67	PI Sta 410+45.07
$\Delta = 40' 19' 35.7"$ (LT)	$\Delta = 77' 49' 42.3"$ (RT)
$D = 7' 32' 20.1"$	$D = 9' 42' 40.1"$
$L = 534.91'$	$L = 801.43'$
$T = 279.07'$	$T = 476.31'$
$R = 760.00'$	$R = 590.00'$
$DS = 50$ MPH	$DS = 45$ MPH
$SE = 0.08$	$SE = 0.08$

THE CONTRACTOR SHOULD BE ADVISED THAT ANY CLEARING WITHIN THE PERMANENT EASEMENT (PE) ALONG USFS PROPERTY SHALL ADHERE TO THE AGREEMENT BETWEEN NCDOT AND THE USFS. THE CONTRACTOR IS TO COORDINATE WITH THE RESIDENT ENGINEER AND DIVISION ENVIRONMENTAL OFFICER PRIOR TO STARTING CLEARING OPERATIONS TO ENSURE COMPLIANCE.

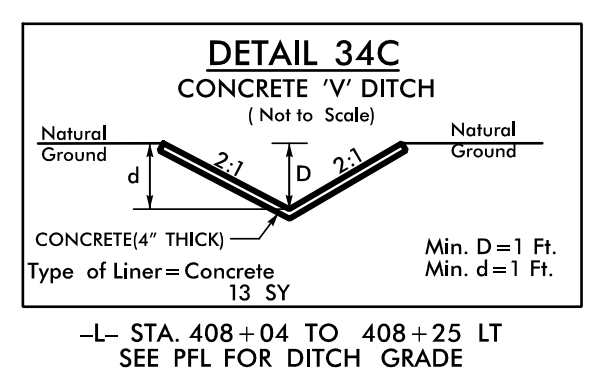
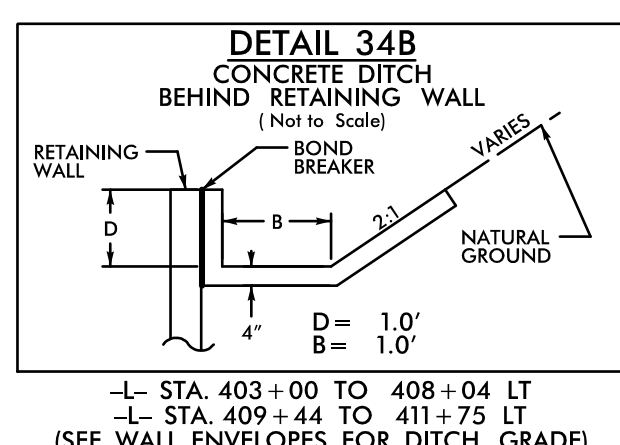
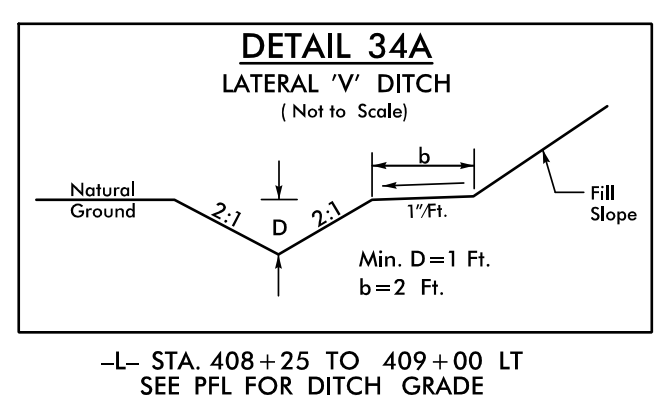
PROJECT REFERENCE NO. A-0009CB	SHEET NO. 34
RW SHEET NO.	
ROADWAY DESIGN 	HYDRAULICS ENGINEER
DOCUMENT NOT CONSIDERED FINAL UNLESS ALL SIGNATURES COMPLETED	
TGS ENGINEERS 201 W MARION ST SHELBY, NC 28150 PH (704) 476-0003 CORP. LICENSE NO.: C-0275	



MATCH LINE STA 403+00.00
MATCH LINE STA 403+00.00

END TIP PROJECT A-0009CB
-L- STA. 414+50.00

END SECTION A-0009CB
BEGIN SECTION A-0009CC



FOR -L- PROFILE, SEE SHEET NO. 51

8/19/2022
S:\Projects\A-0009\Roadway\Proj\A-0009CB_Plan_Sheets\A-0009CB_Rdy_psh_34.dgn
User: jmt