

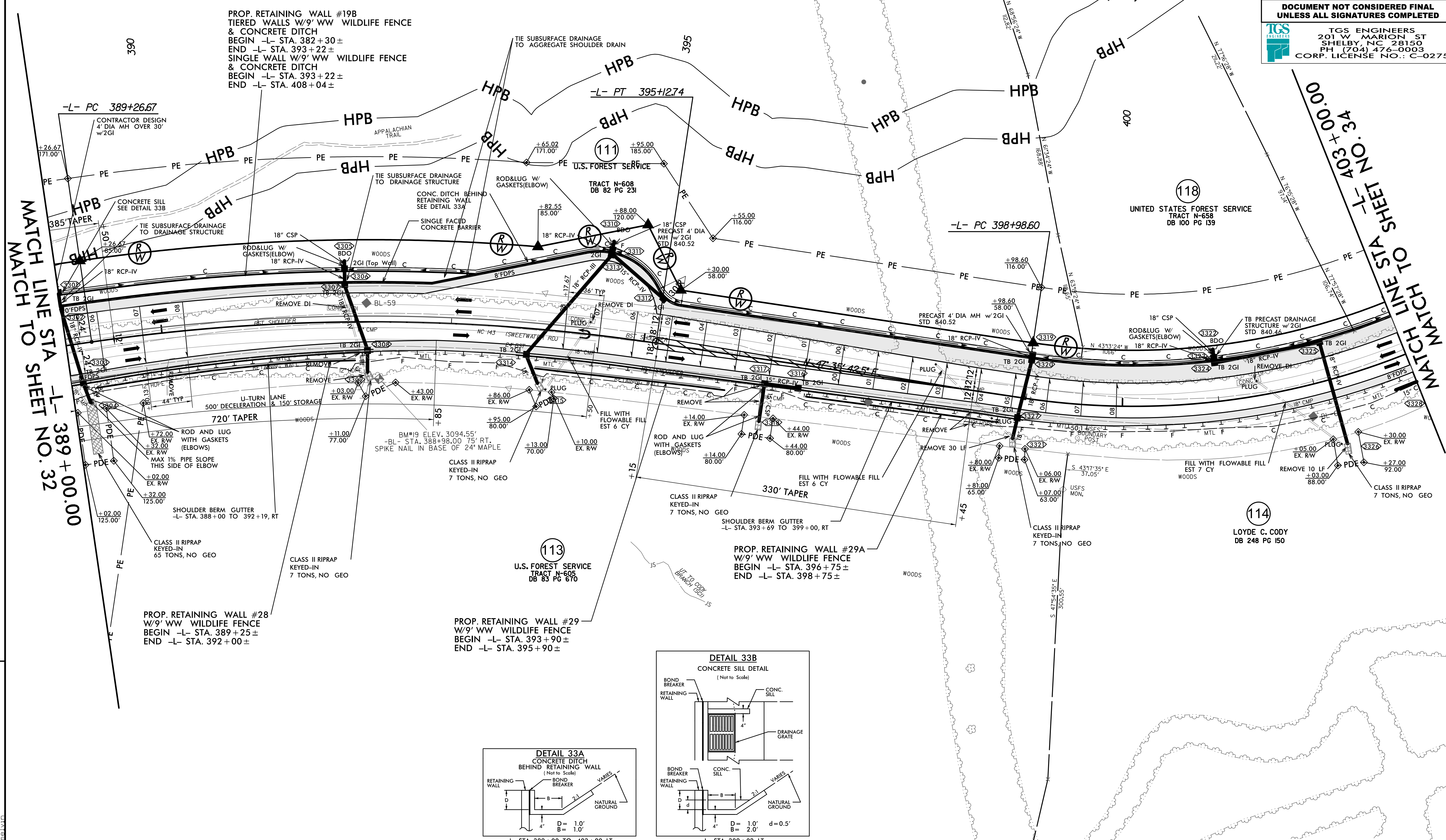
8/17/99

**-L- CURVE DATA**

PI Sta 392+21.82	PI Sta 401+77.67
$\Delta = 16' 47" 22.5" (RT)$	$\Delta = 40' 19" 35.7" (LT)$
$D = 2' 51" 53.2"$	$D = 7' 32" 20.1"$
$L = 586.07'$	$L = 534.91'$
$T = 295.15'$	$T = 279.07'$
$R = 2,000.00'$	$R = 760.00'$
$DS = 70 MPH$	$SE = 50 MPH$
$SE = 0.08$	$SE = 0.08$

THE CONTRACTOR SHOULD BE ADVISED THAT ANY CLEARING WITHIN THE PERMANENT EASEMENT (PE) ALONG USFS PROPERTY SHALL ADHERE TO THE AGREEMENT BETWEEN NCDOT AND THE USFS. THE CONTRACTOR IS TO COORDINATE WITH THE RESIDENT ENGINEER AND DIVISION ENVIRONMENTAL OFFICER PRIOR TO STARTING CLEARING OPERATIONS TO ENSURE COMPLIANCE.

PROJECT REFERENCE NO. A-0009CB	SHEET NO. 33
ROADWAY DESIGN	HYDRAULICS ENGINEER
DOCUMENT NOT CONSIDERED FINAL UNLESS ALL SIGNATURES COMPLETED	
TGS ENGINEERS 201 W. MARION ST SHELBY, NC 28150 PH: (704) 476-0003 CORP. LICENSE NO.: C-0275	



MATCH LINE STA 389+00.00 TO SHEET NO. 32

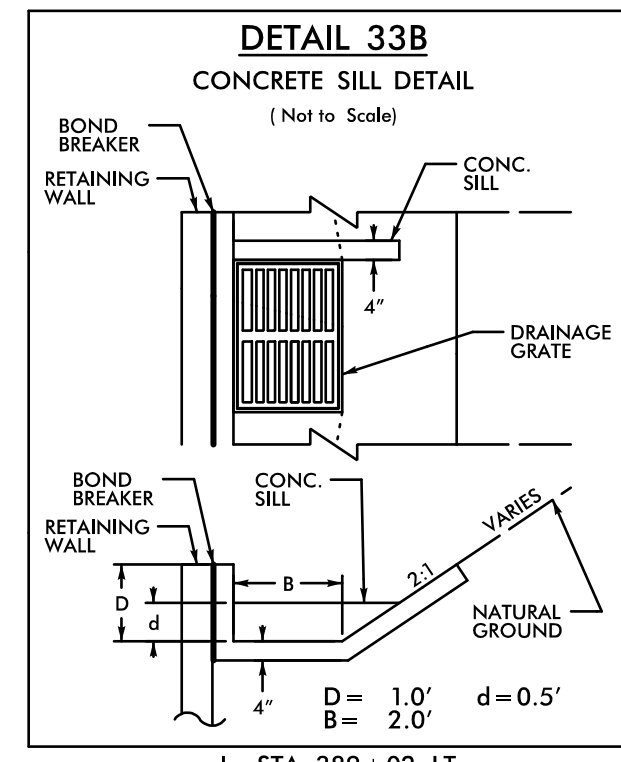
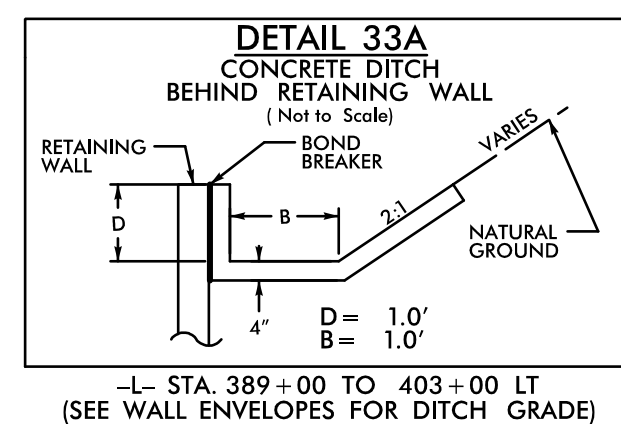
MATCH LINE STA 400+00.00 TO SHEET NO. 34

PROP. RETAINING WALL #19B  
TIERED WALLS W/9' WW WILDLIFE FENCE  
& CONCRETE DITCH  
BEGIN -L- STA. 382+30 ±  
END -L- STA. 393+22 ±  
SINGLE WALL W/9' WW WILDLIFE FENCE  
& CONCRETE DITCH  
BEGIN -L- STA. 393+22 ±  
END -L- STA. 408+04 ±

PROP. RETAINING WALL #29A  
W/9' WW WILDLIFE FENCE  
BEGIN -L- STA. 396+75 ±  
END -L- STA. 398+75 ±

PROP. RETAINING WALL #28  
W/9' WW WILDLIFE FENCE  
BEGIN -L- STA. 389+25 ±  
END -L- STA. 392+00 ±

PROP. RETAINING WALL #29  
W/9' WW WILDLIFE FENCE  
BEGIN -L- STA. 393+90 ±  
END -L- STA. 395+90 ±



FOR -L- PROFILE, SEE SHEET NO. 50

8/14/2022  
S:\NCDOT\A-0009\Roadway\Proj\A-0009\CB\_Plan  
Sheets\A-0009\Roadway\Proj\A-0009\CB\_Plan  
11/21/2022