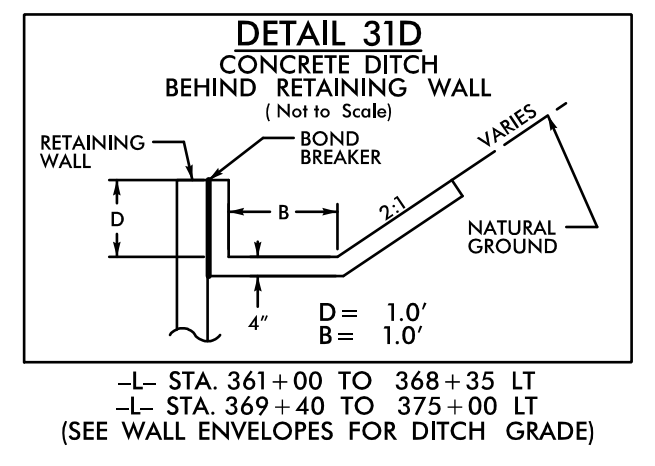
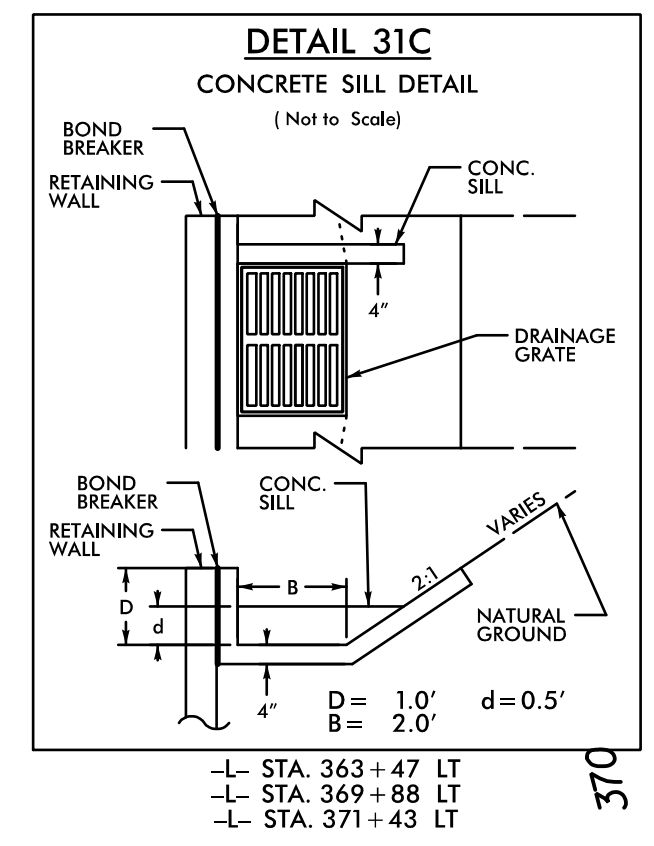
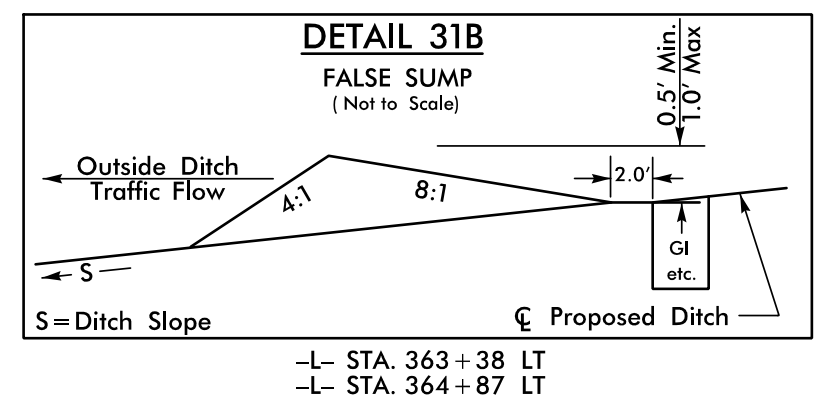
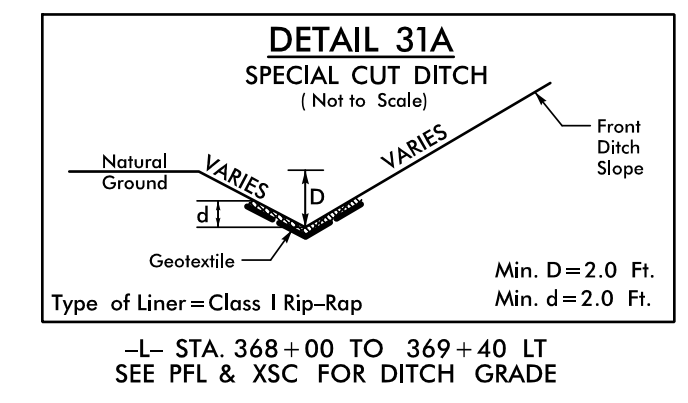


8/17/09

-L- CURVE DATA

PI Sta 360+98.29	PI Sta 366+19.09
$\Delta = 31^{\circ} 53' 08.6''$ (RT)	$\Delta = 29^{\circ} 36' 56.5''$ (LT)
$D = 7^{\circ} 32' 20.1''$	$D = 7^{\circ} 32' 20.1''$
$L = 422.95'$	$L = 392.84'$
$T = 217.1'$	$T = 200.9'$
$R = 760.00'$	$R = 760.00'$
$DS = 50$ MPH	$DS = 50$ MPH
$SE = 0.08$	$SE = 0.08$



THE CONTRACTOR SHOULD BE ADVISED THAT ANY CLEARING WITHIN THE PERMANENT EASEMENT (PE) ALONG USFS PROPERTY SHALL ADHERE TO THE AGREEMENT BETWEEN NCDOT AND THE USFS. THE CONTRACTOR IS TO COORDINATE WITH THE RESIDENT ENGINEER AND DIVISION ENVIRONMENTAL OFFICER PRIOR TO STARTING CLEARING OPERATIONS TO ENSURE COMPLIANCE.

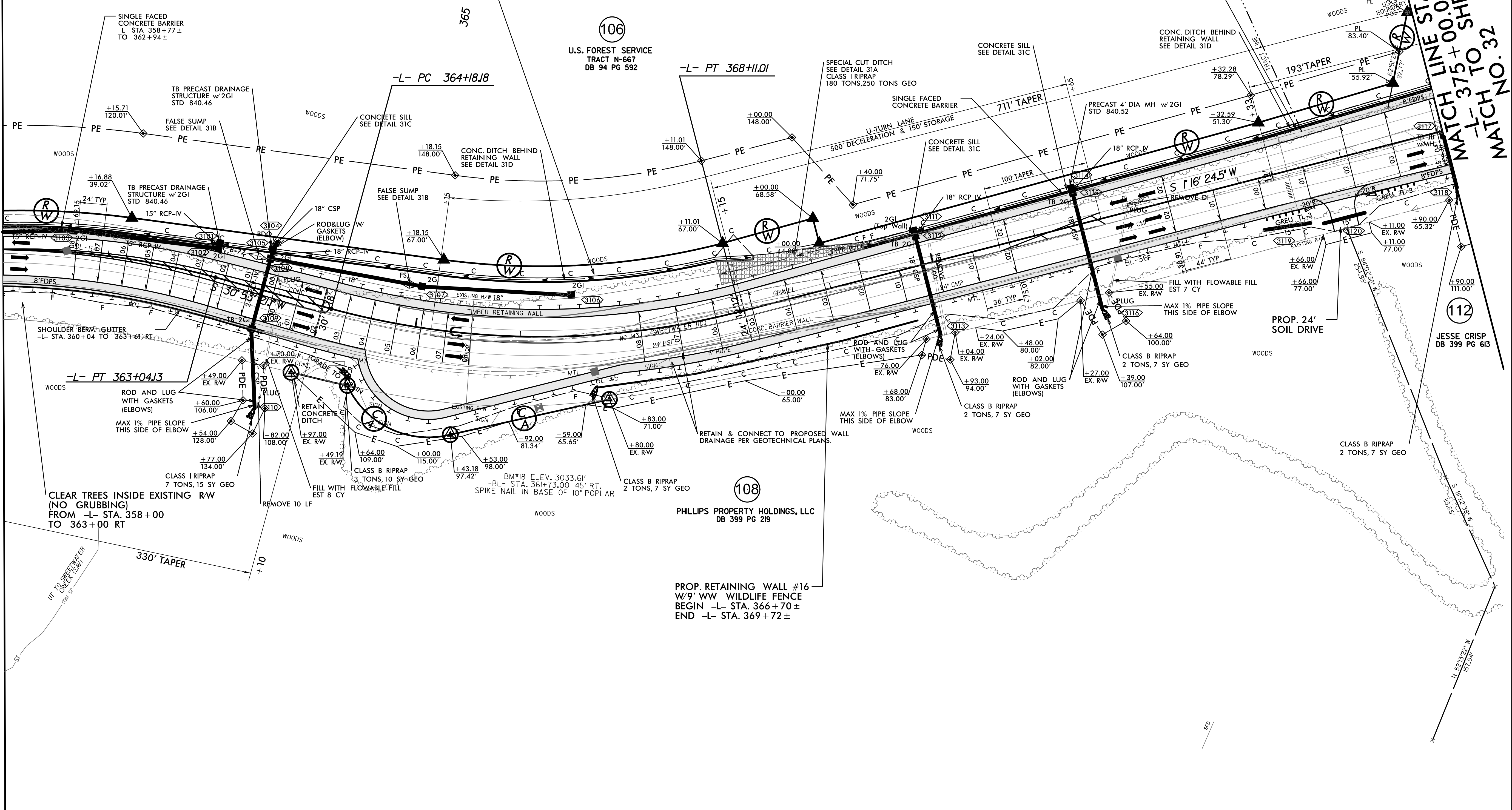
PROP. RETAINING WALL #15
W/9' WW WILDLIFE FENCE & CONCRETE DITCH
BEGIN -L- STA. 352+29±
END -L- STA. 368+35±

PROP. RETAINING WALL #17
W/9' WW WILDLIFE FENCE & CONCRETE DITCH
BEGIN -L- STA. 369+40±
END -L- STA. 375+26±

PROJECT REFERENCE NO. A-0009CB	SHEET NO. 31
ROADWAY DESIGN	HYDRAULICS ENGINEER
DOCUMENT NOT CONSIDERED FINAL UNLESS ALL SIGNATURES COMPLETED	
TGS ENGINEERS 201 W. MARION ST SHELBY, NC 28150 PH: (704) 476-0003 CORP. LICENSE NO.: C-0275	

MATCH LINE STA -L- 361+00.00
MATCH TO SHEET NO. 30

MATCH LINE STA 375+00.00
MATCH TO SHEET
-L- 375+00.00
MATCH NO. 32



8/9/2022
C:\Users\jerry\OneDrive\Documents\Roadway\Proj\A-0009CB\Plan
Sheets\A-0009CB_Rdy_psh_31.dgn