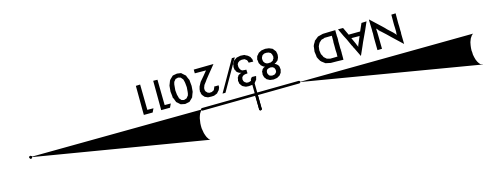
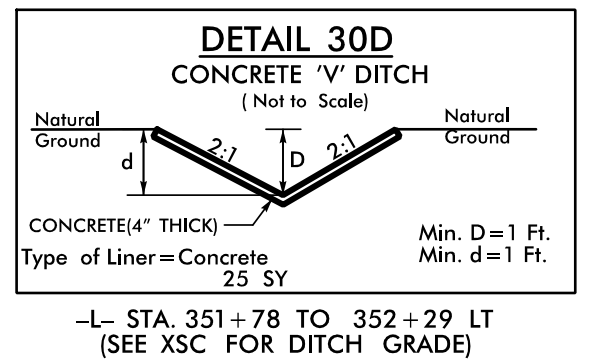
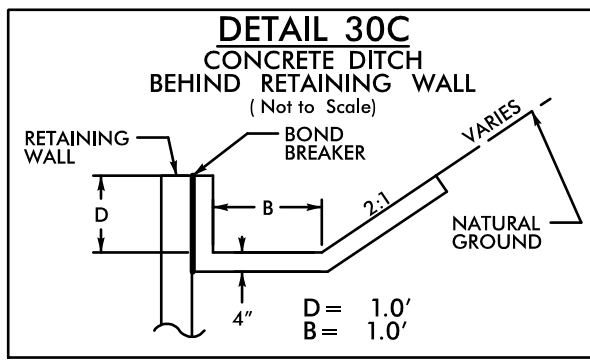
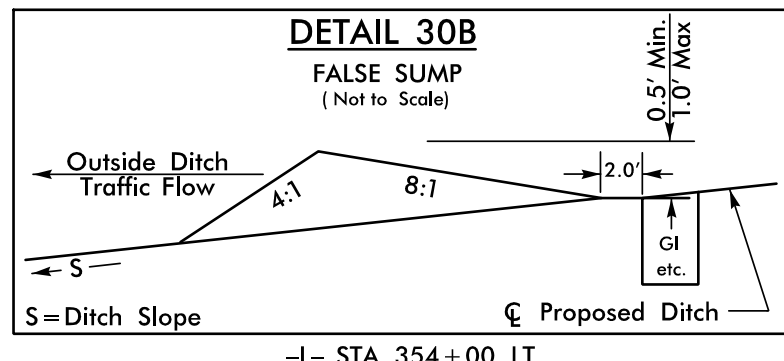
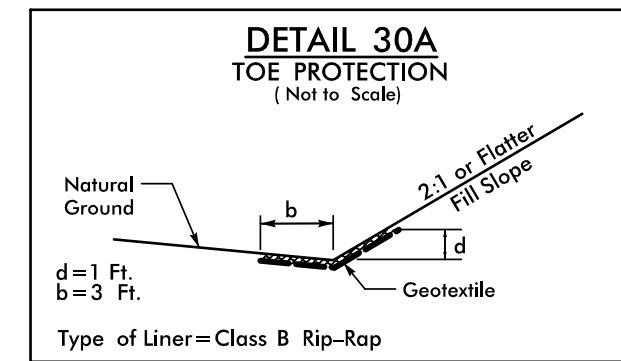


8/17/09

**-L- CURVE DATA**

|                                     |                                     |
|-------------------------------------|-------------------------------------|
| PI Sta 355+57.79                    | PI Sta 360+98.29                    |
| $\Delta = 21^{\circ}26'13.1''$ (LT) | $\Delta = 31^{\circ}53'08.6''$ (RT) |
| $D = 7^{\circ}32'20.1''$            | $D = 7^{\circ}32'20.1''$            |
| $L = 284.35'$                       | $L = 422.95'$                       |
| $T = 143.86'$                       | $T = 217.1'$                        |
| $R = 760.00'$                       | $R = 760.00'$                       |
| $SE = 0.08$                         | $DS = 50$ MPH                       |
|                                     | $SE = 0.08$                         |

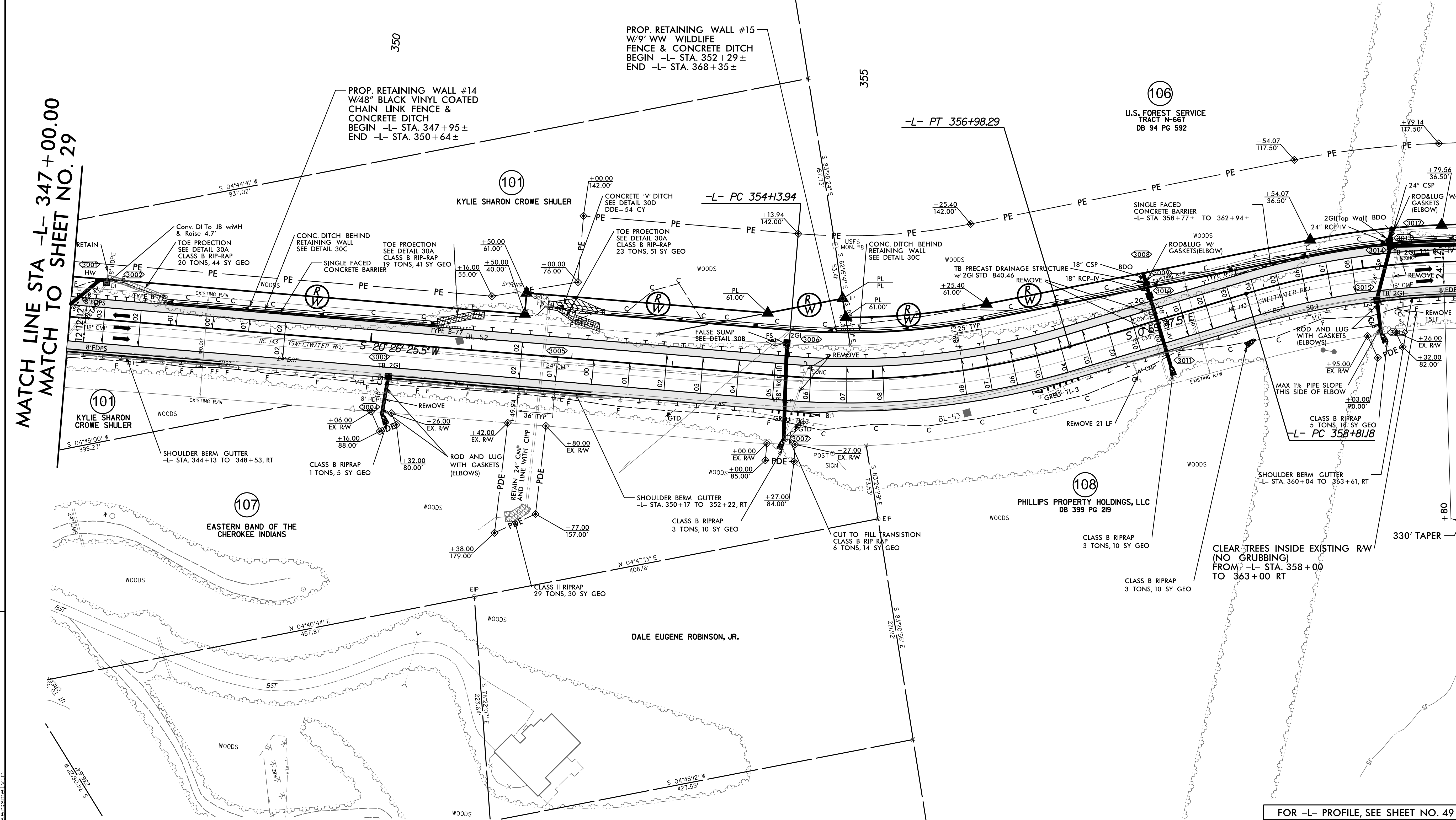


|   |                        |
|---|------------------------|
| PROJECT REFERENCE NO.<br><b>A-0009CB</b>  | SHEET NO.<br><b>30</b> |
| ROADWAY DESIGN  | HYDRAULICS ENGINEER    |
|   |                        |
| <b>DOCUMENT NOT CONSIDERED FINAL UNLESS ALL SIGNATURES COMPLETED</b>  |                        |
| <b>TGS ENGINEERS</b><br>201 W. MARION ST<br>SHELBY, NC 28150<br>PH: (704) 476-0003<br>CORP. LICENSE NO.: C-0275 |                        |

THE CONTRACTOR SHOULD BE ADVISED THAT ANY CLEARING WITHIN THE PERMANENT EASEMENT (PE) ALONG USFS PROPERTY SHALL ADHERE TO THE AGREEMENT BETWEEN NCDOT AND THE USFS. THE CONTRACTOR IS TO COORDINATE WITH THE RESIDENT ENGINEER AND DIVISION ENVIRONMENTAL OFFICER PRIOR TO STARTING CLEARING OPERATIONS TO ENSURE COMPLIANCE.

MATCH LINE STA -L- 347+00.00  
MATCH TO SHEET NO. 29

MATCH LINE STA -L- 361+00.00  
MATCH TO SHEET NO. 31



FOR -L- PROFILE, SEE SHEET NO. 49

8/19/2022  
S:\Projects\A-0009\Roadway\Proj\A-0009CB\_Plan  
Sheets\A-0009CB\_Rdy\_psh\_30.dgn  
User: jsm