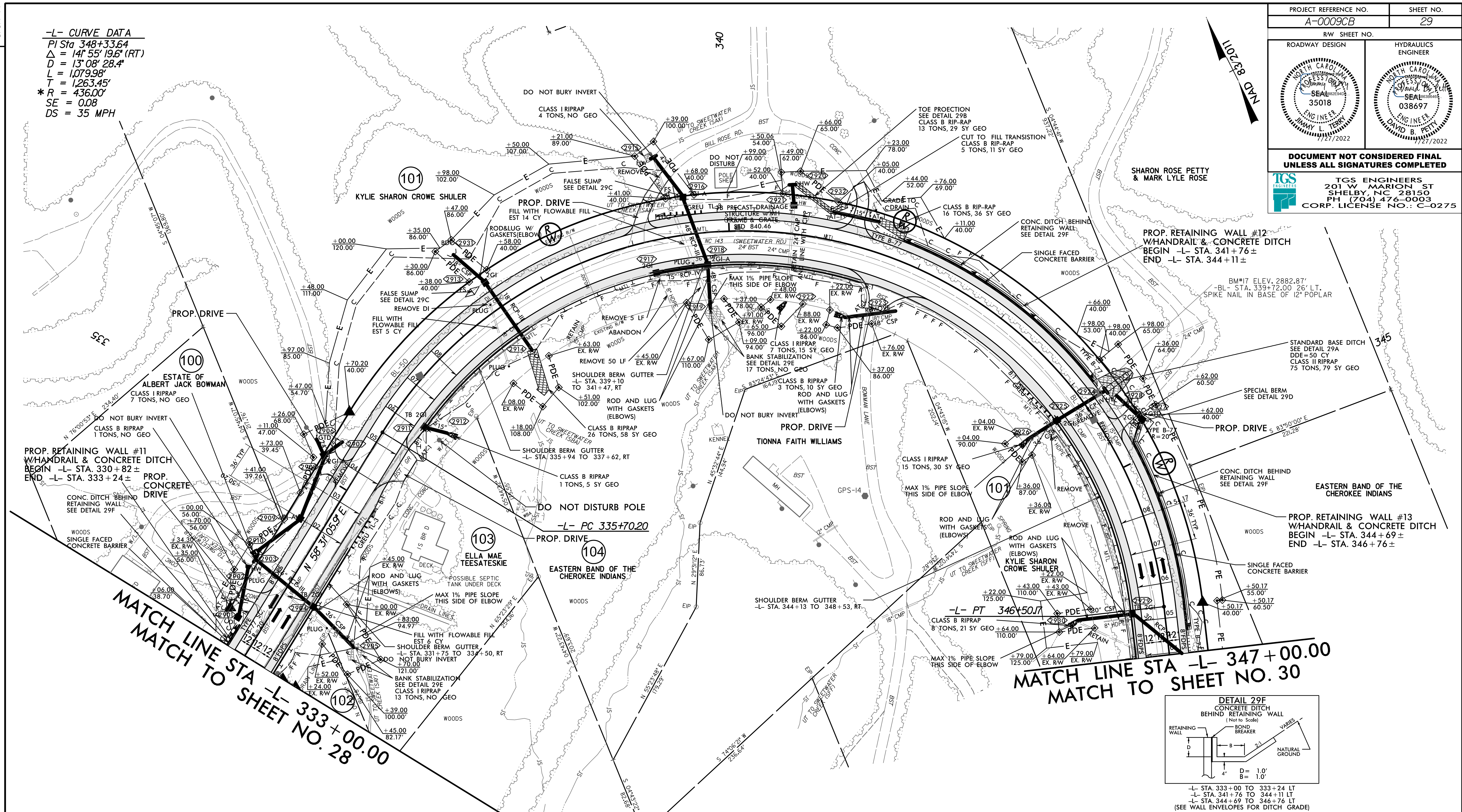


-L- CURVE DATA
 PI Sta 348+33.64
 $\Delta = 141^{\circ} 55' 19.6"$ (RT)
 $D = 13^{\circ} 08' 28.4"$
 $L = 1,079.98'$
 $* R = 436.00'$
 $SE = 0.08$
 $DS = 35$ MPH

PROJECT REFERENCE NO. A-0009CB		SHEET NO. 29	
ROADWAY DESIGN		HYDRAULICS ENGINEER	
DOCUMENT NOT CONSIDERED FINAL UNLESS ALL SIGNATURES COMPLETED			
 TGS ENGINEERS 201 W. MARION ST SHELBY, NC 28150 PH: (704) 476-0003 CORP. LICENSE NO.: C-0275			



**MATCH LINE STA -L- 333+00.00
MATCH TO SHEET NO. 28**

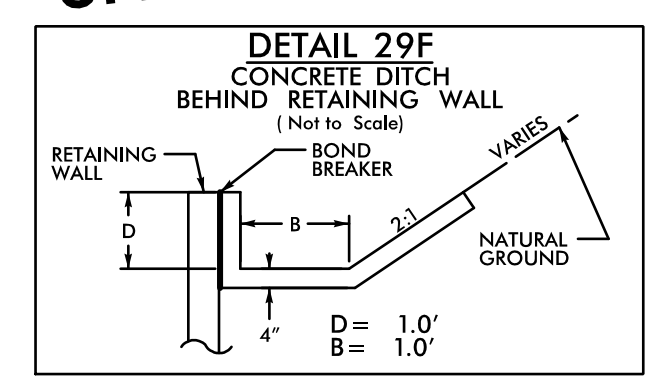
**MATCH LINE STA -L- 347+00.00
MATCH TO SHEET NO. 30**

THE CONTRACTOR SHOULD BE ADVISED THAT ANY CLEARING WITHIN THE PERMANENT EASEMENT (PE) ALONG USFS PROPERTY SHALL ADHERE TO THE AGREEMENT BETWEEN NCDOT AND THE USFS. THE CONTRACTOR IS TO COORDINATE WITH THE RESIDENT ENGINEER AND DIVISION ENVIRONMENTAL OFFICER PRIOR TO STARTING CLEARING OPERATIONS TO ENSURE COMPLIANCE.

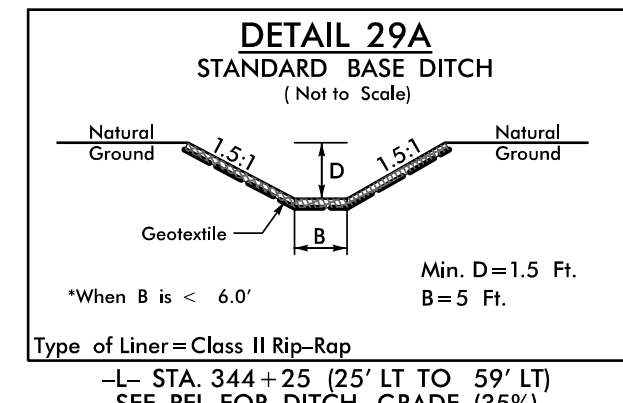
NOTE:
 ALL DRIVEWAYS ARE TO BE ASPHALT UNLESS OTHERWISE NOTED.
 END LOCATION OF DRIVEWAY SHOWN ON PLANS REPRESENTS TIE-IN PER CROSS-SECTIONS, THE CONTRACTOR SHALL EXTEND THE DRIVES AND PAVE UP TO THE RIGHT OF WAY LINE FROM ROW POINT ON MATCH DRIVEWAY IN KIND, UNLESS OTHERWISE NOTED.

*** DESIGN EXCEPTION REQUIRED FOR HORIZONTAL CURVATURE.**

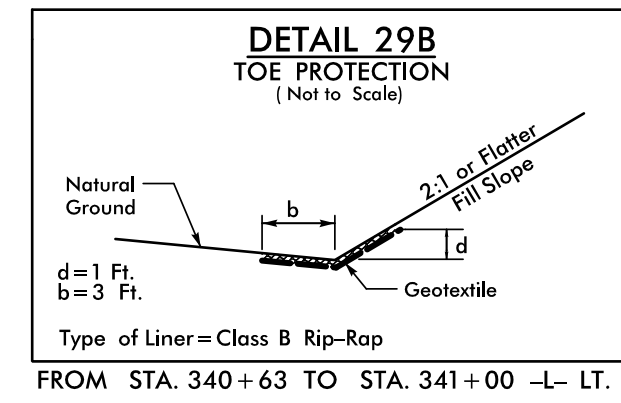
FOR -L- PROFILE, SEE SHEET NO. 48



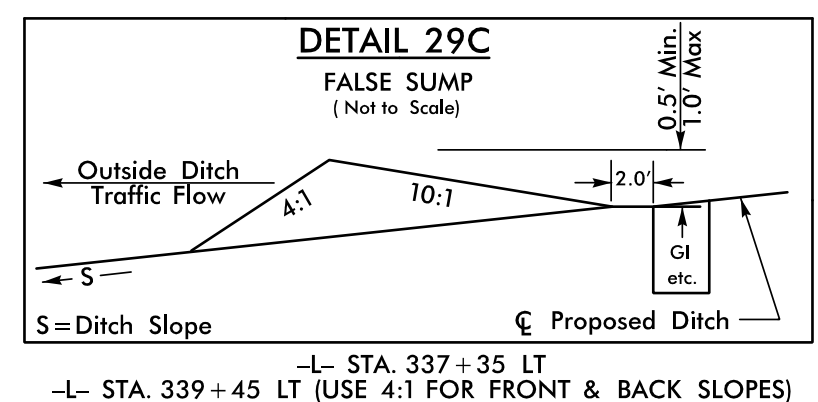
-L- STA. 333+00 TO 333+24 LT
 -L- STA. 341+76 TO 344+11 LT
 -L- STA. 344+69 TO 346+76 LT
 (SEE WALL ENVELOPES FOR DITCH GRADE)



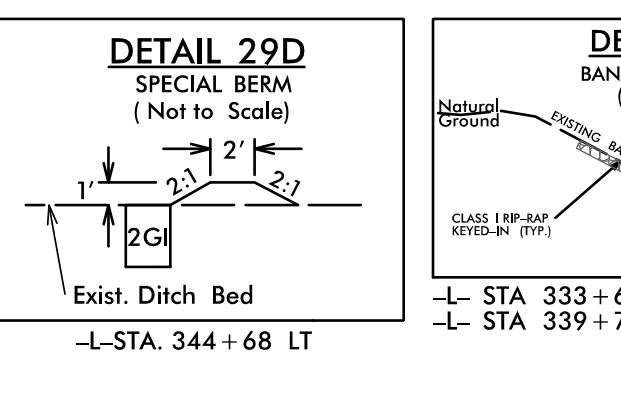
-L- STA. 344+25 (25' LT TO 59' LT)
 SEE PFL FOR DITCH GRADE (35%)



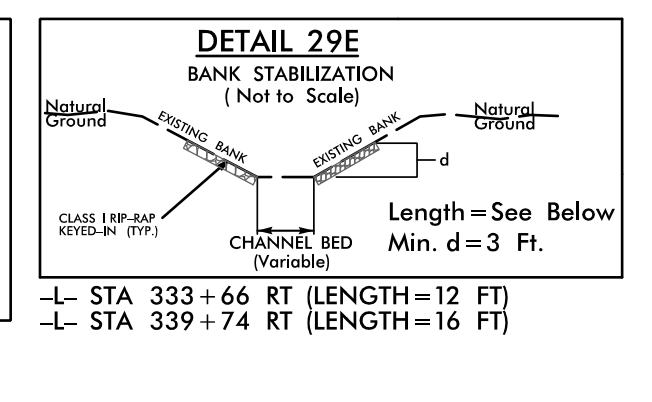
FROM STA. 340+63 TO STA. 341+00 -L- LT.



-L- STA. 337+35 LT
 -L- STA. 339+45 LT (USE 4:1 FOR FRONT & BACK SLOPES)



-L- STA. 344+68 LT



-L- STA. 333+66 RT (LENGTH=12 FT)
 -L- STA. 339+74 RT (LENGTH=16 FT)