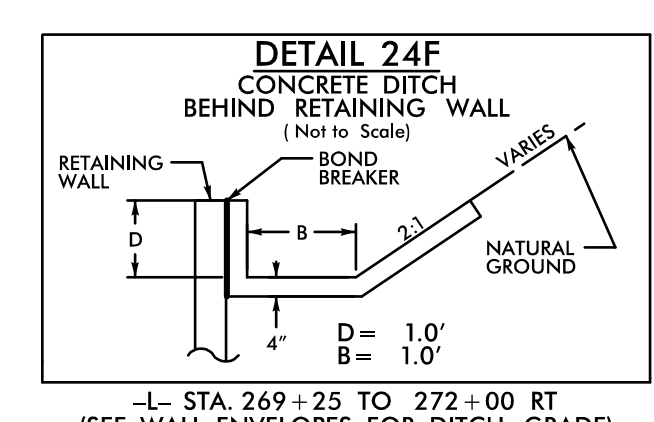
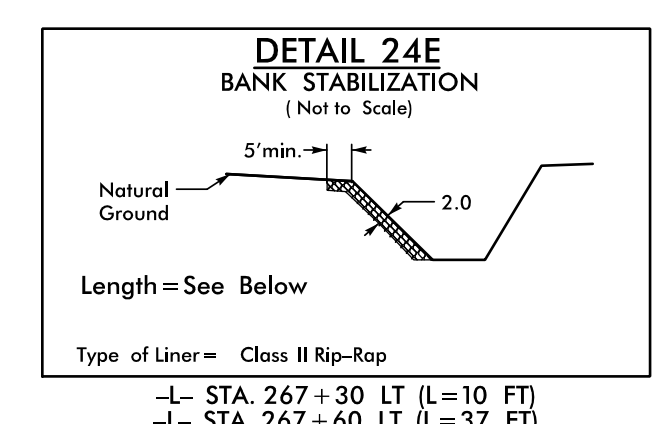
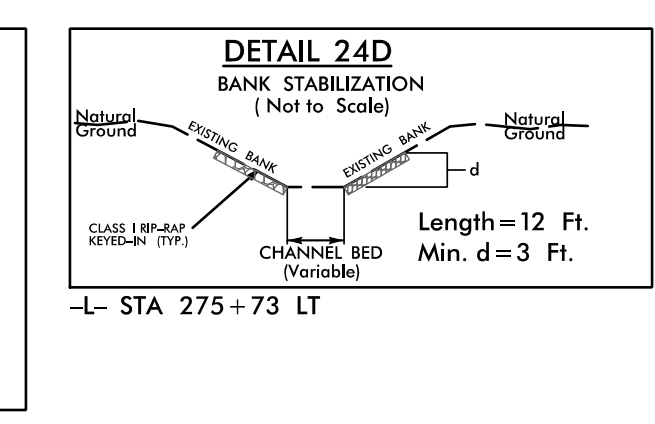
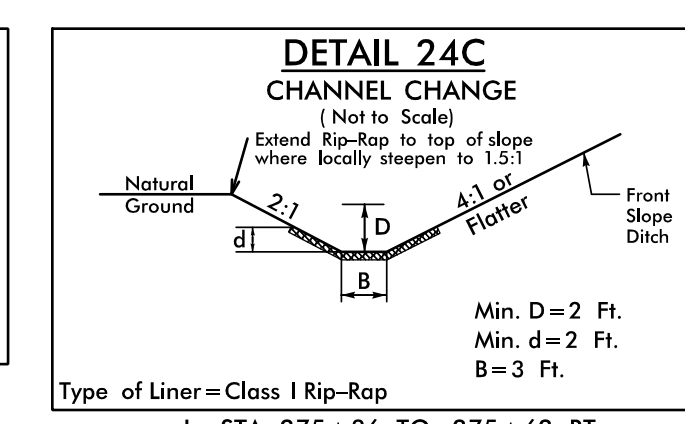
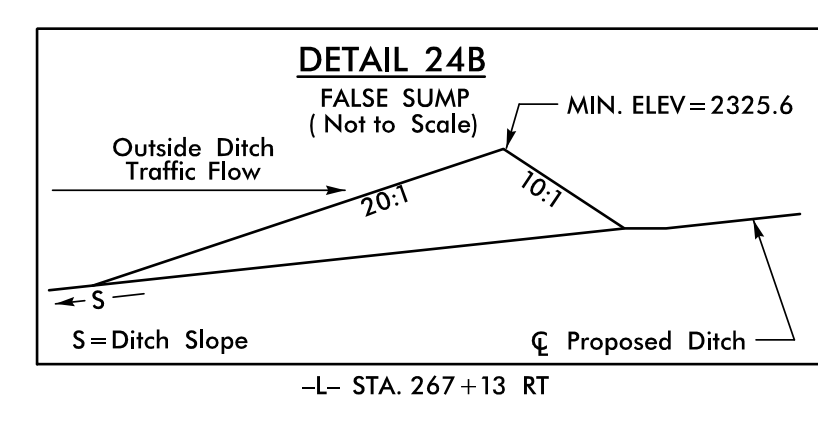
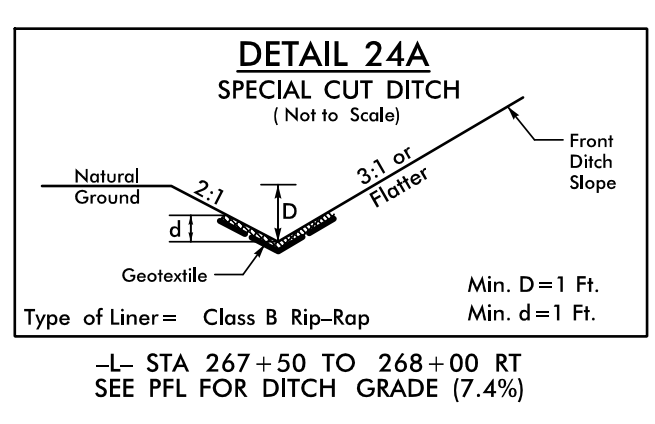


8/17/2022

-L- CURVE DATA

PI Sta 269+61.11	PI Sta 274+37.73
$\Delta = 2' 50'' 08.0'' (LT)$	$\Delta = 1' 42'' 58.4'' (RT)$
$D = 0' 28'' 38.9''$	$D = 0' 28'' 38.9''$
$L = 593.88'$	$L = 359.44'$
$T = 297.00'$	$T = 179.74'$
$R = 12,000.00'$	$R = 12,000.00'$
SE = NC	SE = NC
DS = 60 MPH	DS = 60 MPH

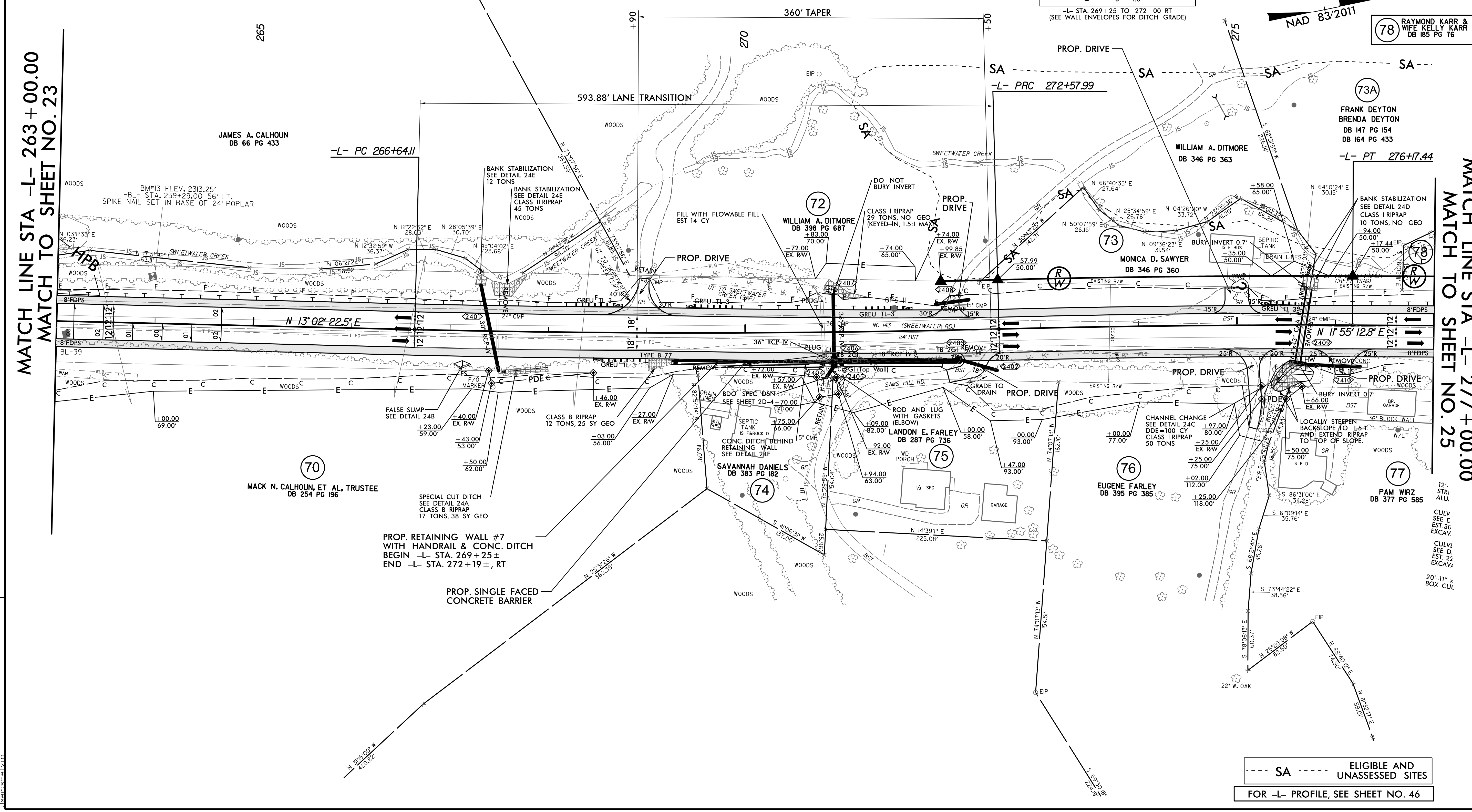
NOTE:
ALL DRIVEWAYS ARE TO BE ASPHALT UNLESS OTHERWISE NOTED.
END LOCATION OF DRIVEWAY SHOWN ON PLANS REPRESENTS TIE-IN PER CROSS-SECTIONS, THE CONTRACTOR SHALL EXTEND THE DRIVES AND PAVE UP TO THE RIGHT OF WAY LINE FROM ROW POINT ON MATCH DRIVEWAY IN KIND, UNLESS OTHERWISE NOTED.



PROJECT REFERENCE NO. A-0009CB	SHEET NO. 24
ROADWAY DESIGN	HYDRAULICS ENGINEER
DOCUMENT NOT CONSIDERED FINAL UNLESS ALL SIGNATURES COMPLETED	
TGS ENGINEERS 201 W. MARION ST SHELBY, NC 28150 PH: (704) 476-0003 CORP. LICENSE NO.: C-0275	

MATCH LINE STA -L- 263+00.00
MATCH TO SHEET NO. 23

8/17/2022
C:\Users\jmal\OneDrive\Documents\Roadway\Proj\A-0009CB\Plan Sheets\A-0009CB_Rdy_psh_24.dgn



MATCH LINE STA -L- 277+00.00
MATCH TO SHEET NO. 25

--- SA --- ELIGIBLE AND UNASSESSED SITES
FOR -L- PROFILE, SEE SHEET NO. 46