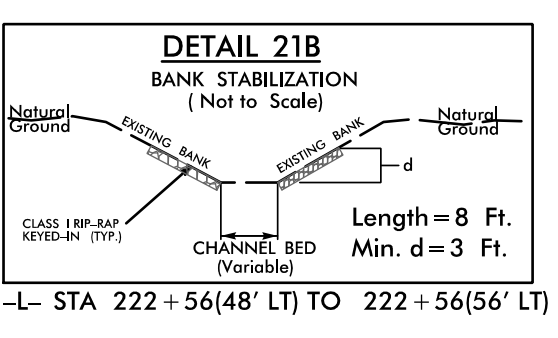
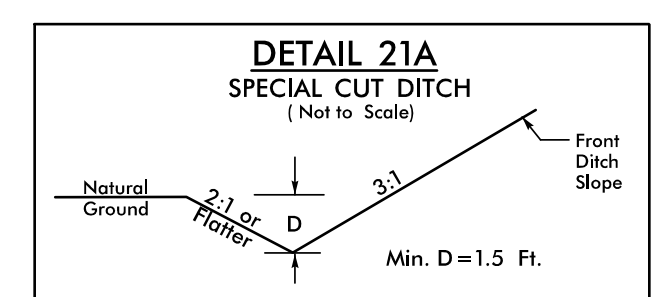


8/17/09

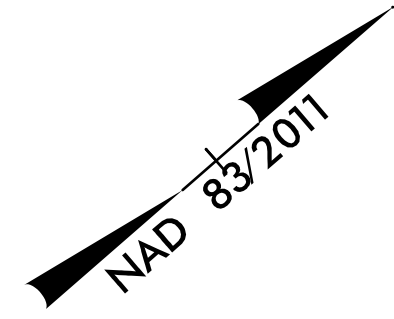
-L- CURVE DATA

PI Sta 219+95.61	PI Sta 234+84.86
$\Delta = 36^{\circ}39'28.8''$ (LT)	$\Delta = 12^{\circ}40'17.1''$ (RT)
$D = 2^{\circ}17'30.6''$	$D = 1^{\circ}54'35.5''$
$L = 1599.51'$	$L = 663.47'$
$T = 828.20'$	$T = 333.10'$
$R = 2500.00'$	$R = 3000.00'$
$SE = 0.06$	$SE = 0.05$
$DS = 60$ MPH	$DS = 60$ MPH



NOTE:
ALL DRIVEWAYS ARE TO BE ASPHALT UNLESS OTHERWISE NOTED.
END LOCATION OF DRIVEWAY SHOWN ON PLANS REPRESENTS TIE-IN PER CROSS-SECTIONS, THE CONTRACTOR SHALL EXTEND THE DRIVES AND PAVE UP TO THE RIGHT OF WAY LINE, FROM ROW POINT ON MATCH DRIVEWAY IN KIND, UNLESS OTHERWISE NOTED.

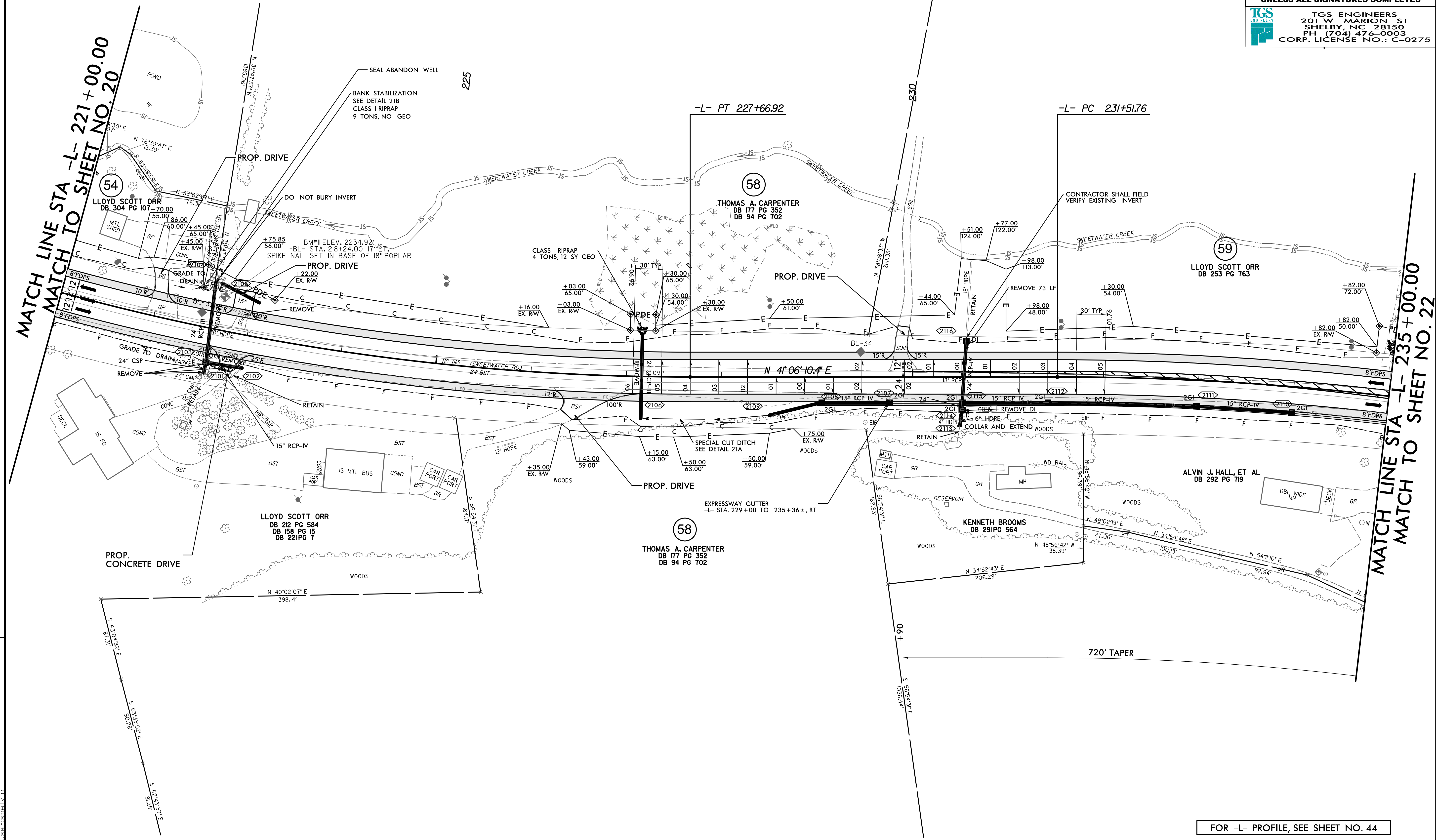
PROJECT REFERENCE NO. A-0009CB	SHEET NO. 21
ROADWAY DESIGN ENGINEER	HYDRAULICS ENGINEER
DOCUMENT NOT CONSIDERED FINAL UNLESS ALL SIGNATURES COMPLETED	
 TGS ENGINEERS 201 W MARION ST SHELBY, NC 28150 PH: (704) 476-0003 CORP. LICENSE NO.: C-0275	



REVISIONS

MATCH LINE STA -L- 221+00.00
 MATCH TO SHEET NO. 20

MATCH LINE STA -L- 235+00.00
 MATCH TO SHEET NO. 22



8/19/2009
 A:\0009\Roadway\Proj\A-0009CB\Plan
 Sheets\A-0009CB_Rdy_psh_21.dgn
 lceastmel

FOR -L- PROFILE, SEE SHEET NO. 44