

STATE OF
NORTH CAROLINA
DEPT. OF TRANSPORTATION
DIVISION OF HIGHWAYS
RALEIGH, N.C.

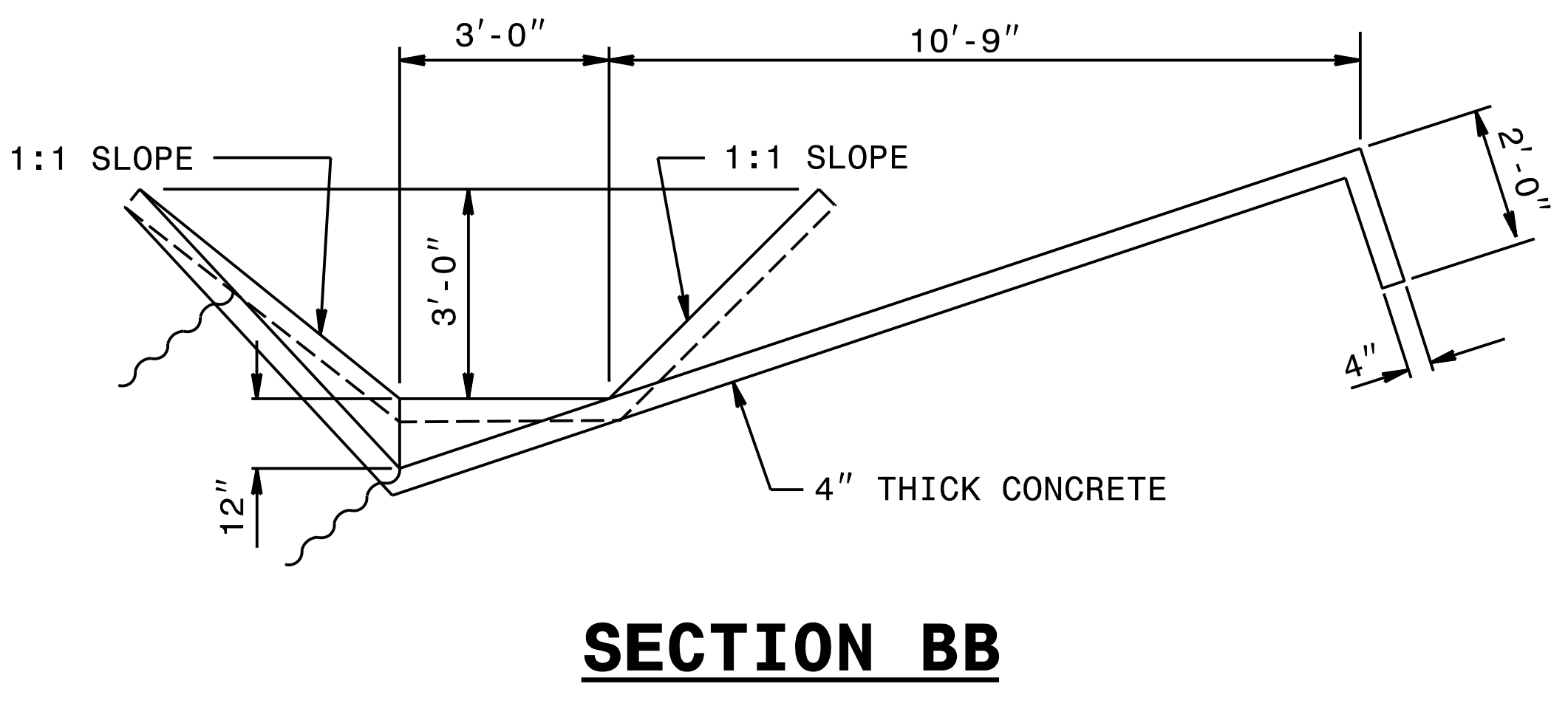
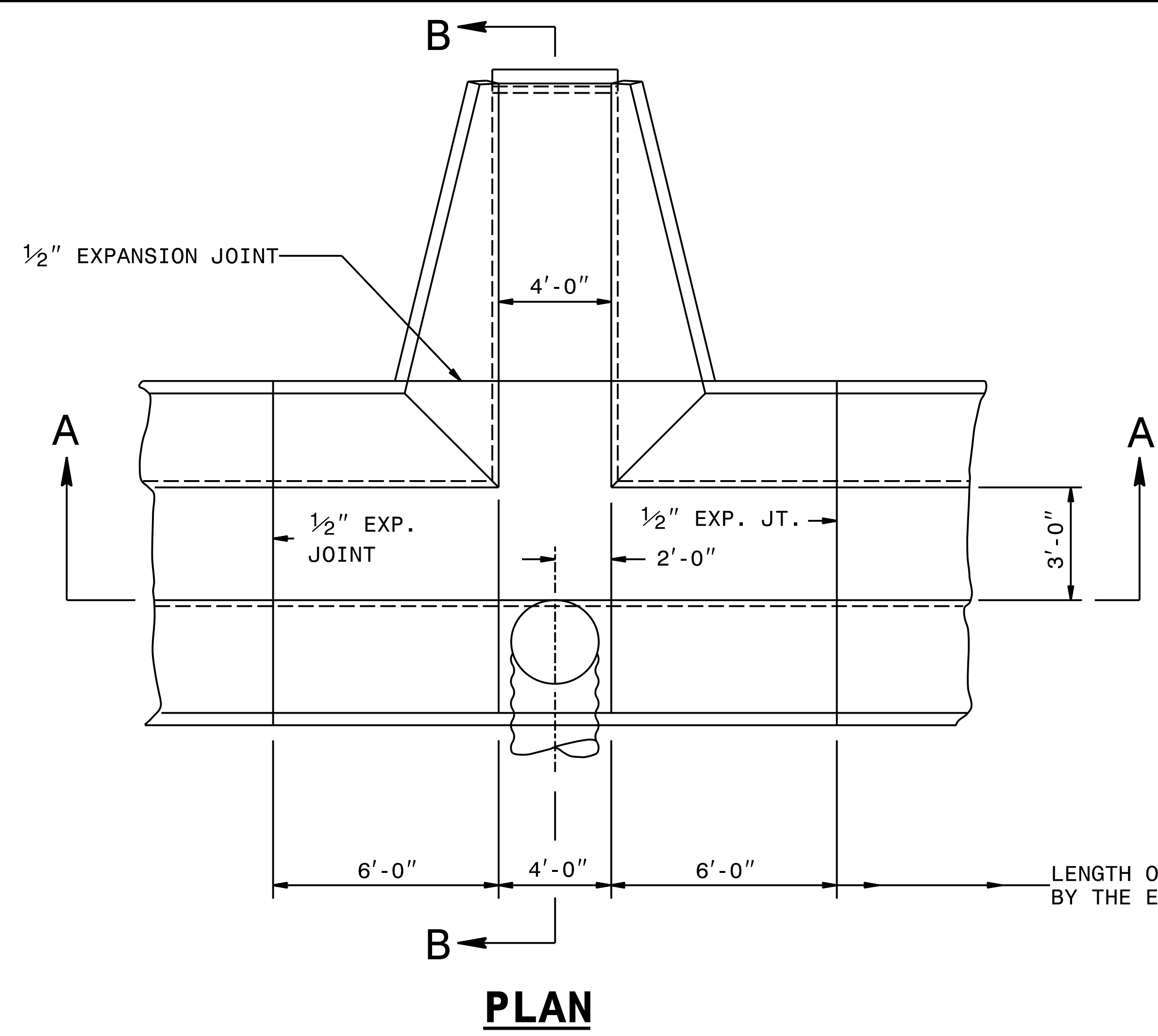
ENGLISH DETAIL DRAWING FOR
GUIDE FOR BERM DRAINAGE OUTLET
42" PIPE

SHEET 1 OF 1

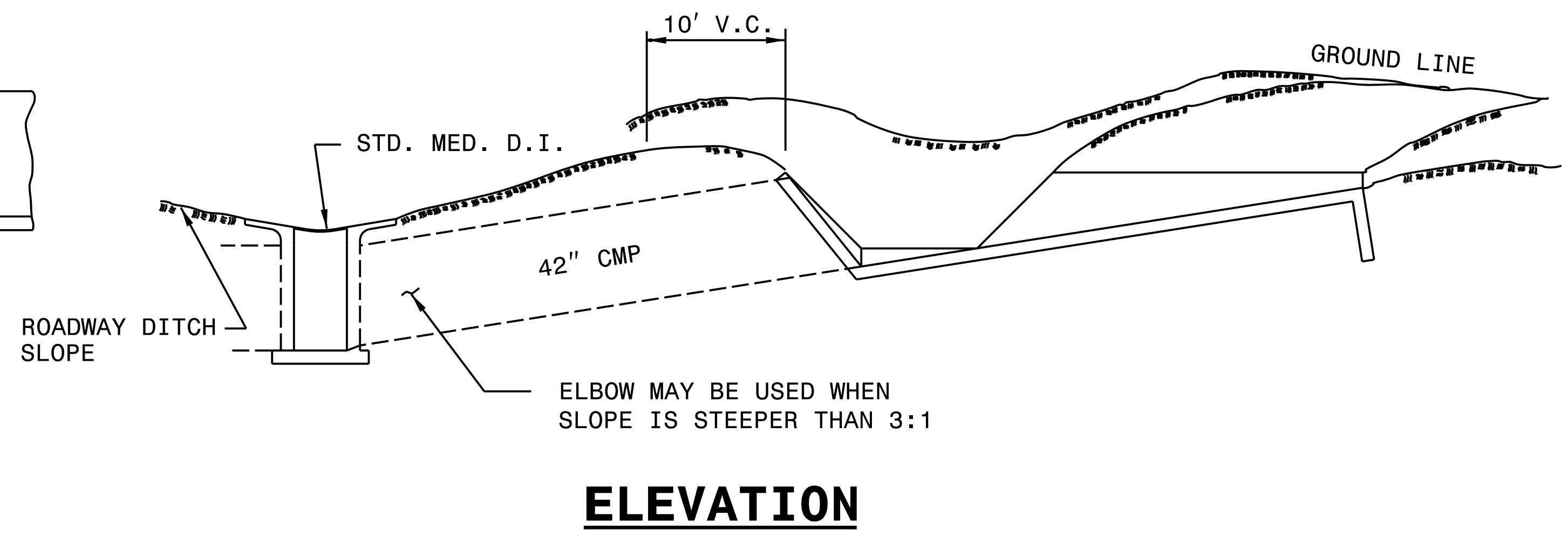
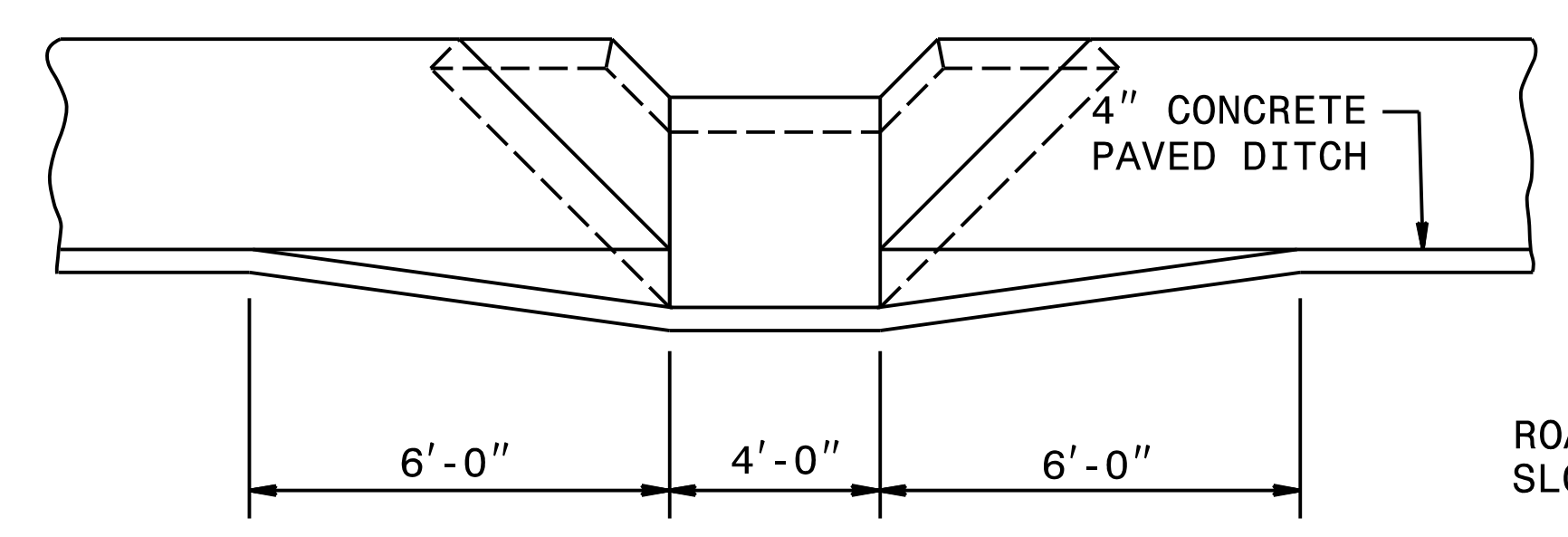
STATE OF
NORTH CAROLINA
DEPT. OF TRANSPORTATION
DIVISION OF HIGHWAYS
RALEIGH, N.C.

ENGLISH DETAIL DRAWING FOR
GUIDE FOR BERM DRAINAGE OUTLET
42" PIPE

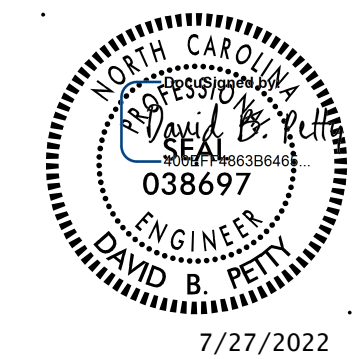
SHEET 1 OF 1



GENERAL NOTES:
WHERE NECESSARY, ELBOWS MAY BE USED TO SKEW PIPE TO FIT INLETS WHERE THERE IS OFFSET BETWEEN THE INLET END AT BERM AND THE D.I.



<p>DETAIL PREPARED BY:</p> <p>TGS ENGINEERS 706 HILLSBOROUGH ST SUITE 200 RALEIGH, NC 27603 PH (919) 773-8887 CORP. LICENSE NO.: C-0275</p>	<p>DETAIL PREPARED FOR:</p> <p>NORTH CAROLINA DEPARTMENT OF TRANSPORTATION DIVISION 14 252 Webster Rd Sylva, NC 28779</p>
---	---



SEE PLATE FOR TITLE

ORIGINAL BY: 2002 STANDARDS DATE: 01-15-02
 MODIFIED BY: DAVID B. PETTY DATE: 3-16-22
 CHECKED BY: DATE:
 FILE SPEC.: usr/details/stand/850d01.dgn

DOCUMENT NOT CONSIDERED FINAL
UNLESS ALL SIGNATURES COMPLETED

3/18/2022 X:\NC\0001\A-0009CB\Drawings\Special Details for A-0009CB\850d01 Special Design 8D0.dgn User:zrichard