

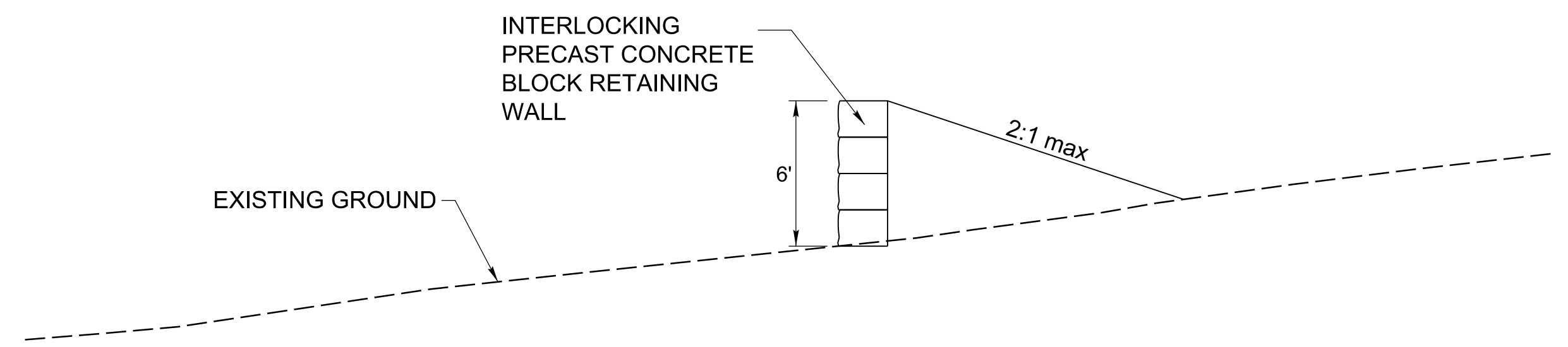
NOTES:

1. THE LANDING ZONE SHALL BE FLAT, STABLE, AND EARTHEN. THE AREA SHALL BE VOID OF OBJECTS THAT MAY HINDER OR ENDANGER WILDLIFE. THE ENGINEER MAY ADJUST THE GAME RAMP LOCATION AND WIDTH AS NEEDED.
2. THERE SHALL BE NO DISTURBANCE BEYOND THE ROW OR TEMPORARY/PERMANENT EASEMENTS.
3. FILL MATERIAL SHALL BE NO.57 STONE
4. FOUR INCHES OF TOPSOIL SHALL BE PLACED.
5. FINISHED HEIGHT OF BACKFILL/TOPSOIL SHALL BE 2" ABOVE CONCRETE BLOCK.
6. SEEDING SHALL BE COMPLETED AFTER THE ENGINEER APPROVES GRADING.
7. WALL FACE NOT TO BE MORE THAN 2" OUT OF VERTICAL.
8. INTERLOCKING PRECAST CONCRETE BLOCK RETAINING WALL H18"-24" x W36"-48" x D VARIES. VARIATION IN BLOCK SIZE IS ALLOWED WITH DIRECTION FROM THE ENGINEER.
9. WILDLIFE FENCE SHALL BE PLACED AS CLOSE AS POSSIBLE TO THE PRECAST CONCRETE BLOCK.

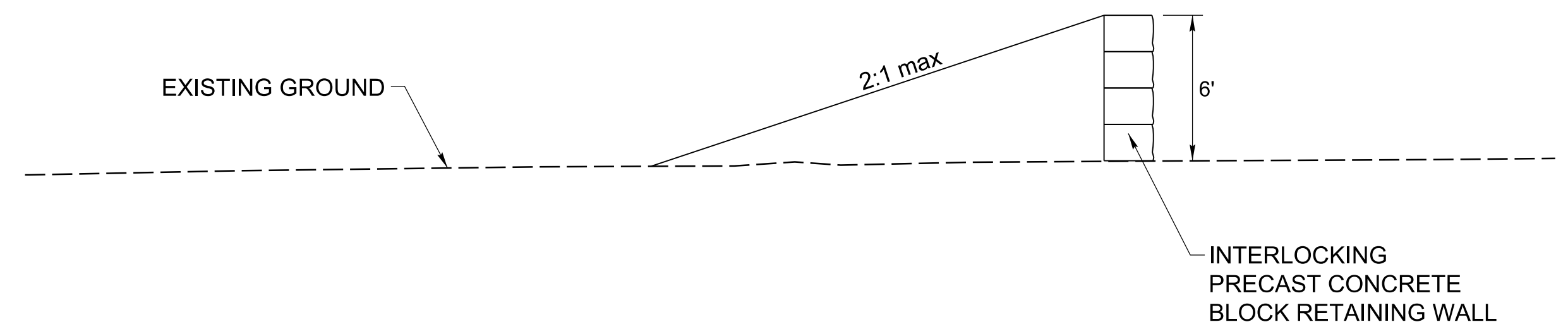
WILDLIFE JUMP OUT DETAILS



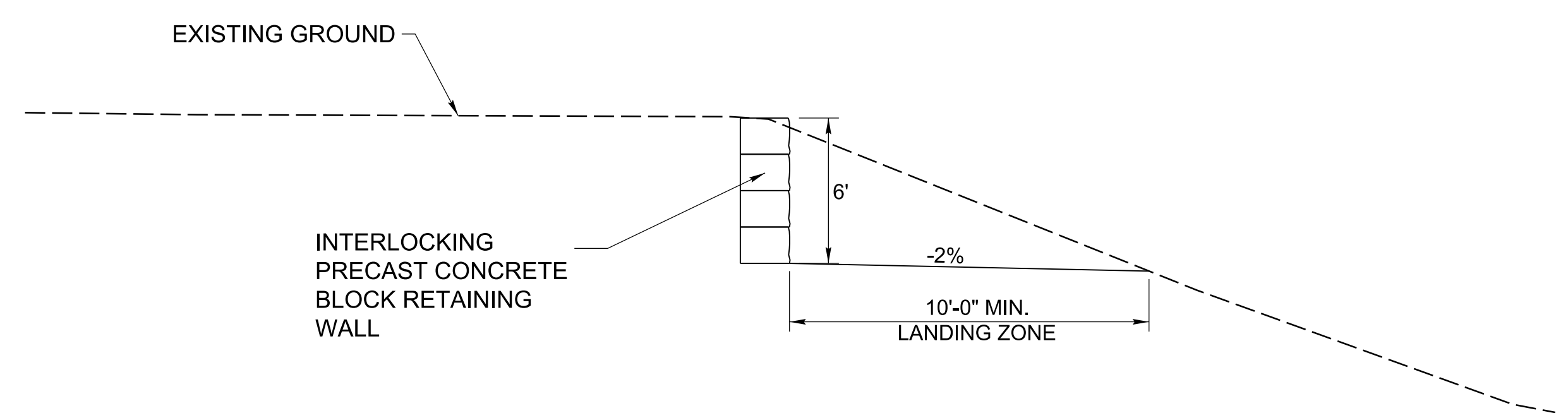
TYPICAL SECTIONS B-B



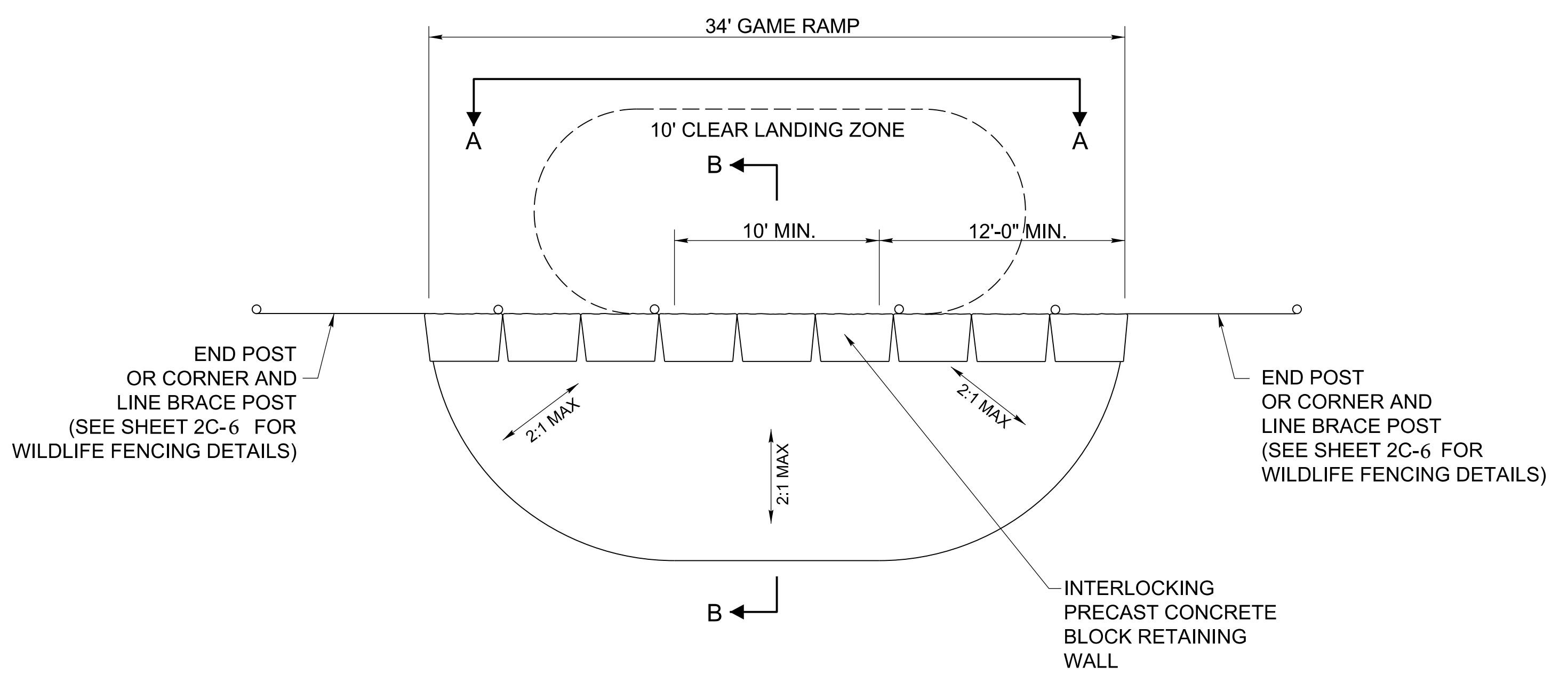
JUMP OUT DETAIL A



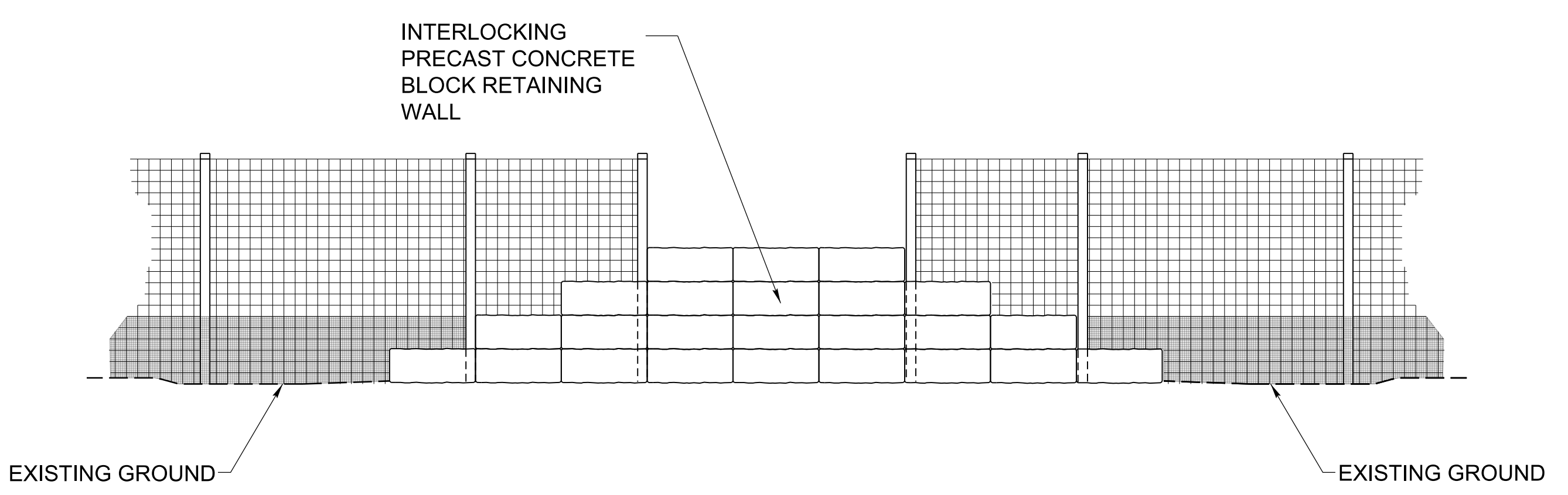
JUMP OUT DETAIL B



JUMP OUT DETAIL C



PLAN VIEW



SECTION A-A REAR ELEVATION VIEW

REVISIONS

\$\$\$\$\$SYTIME\$\$\$\$\$
\$\$\$\$\$Wildlife Fencing Details.dgn
\$\$\$\$\$11/27/2022 11:58:11 AM\$\$\$\$\$