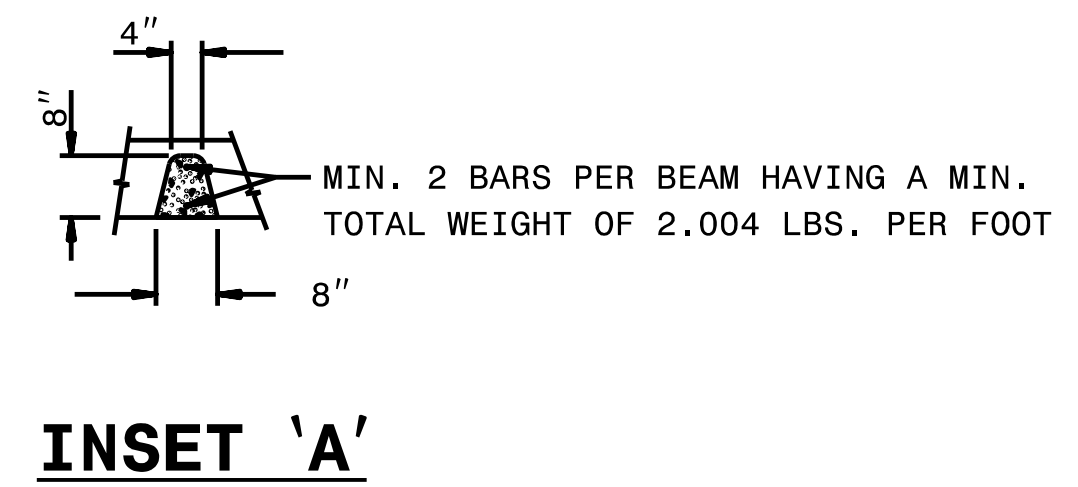
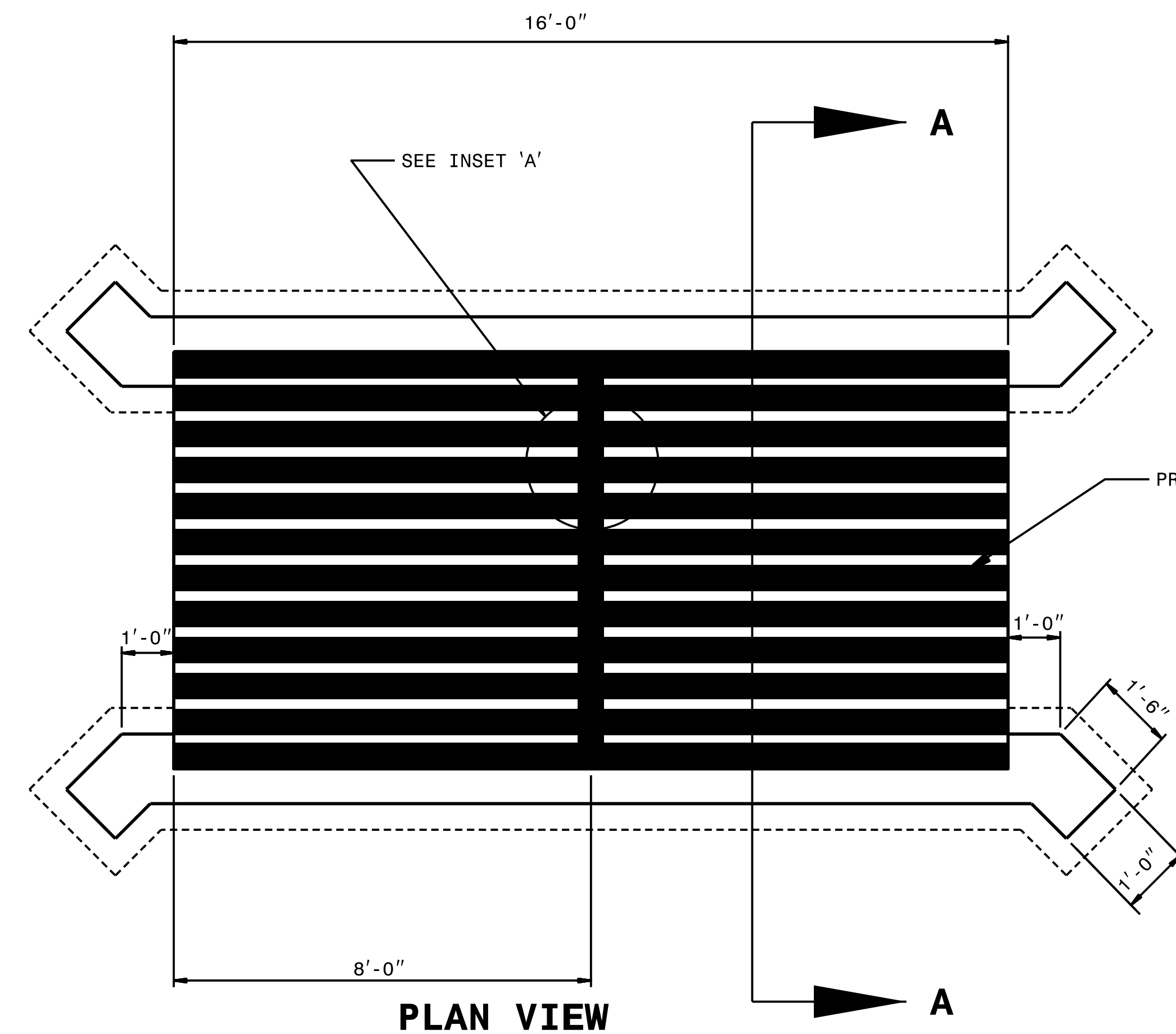


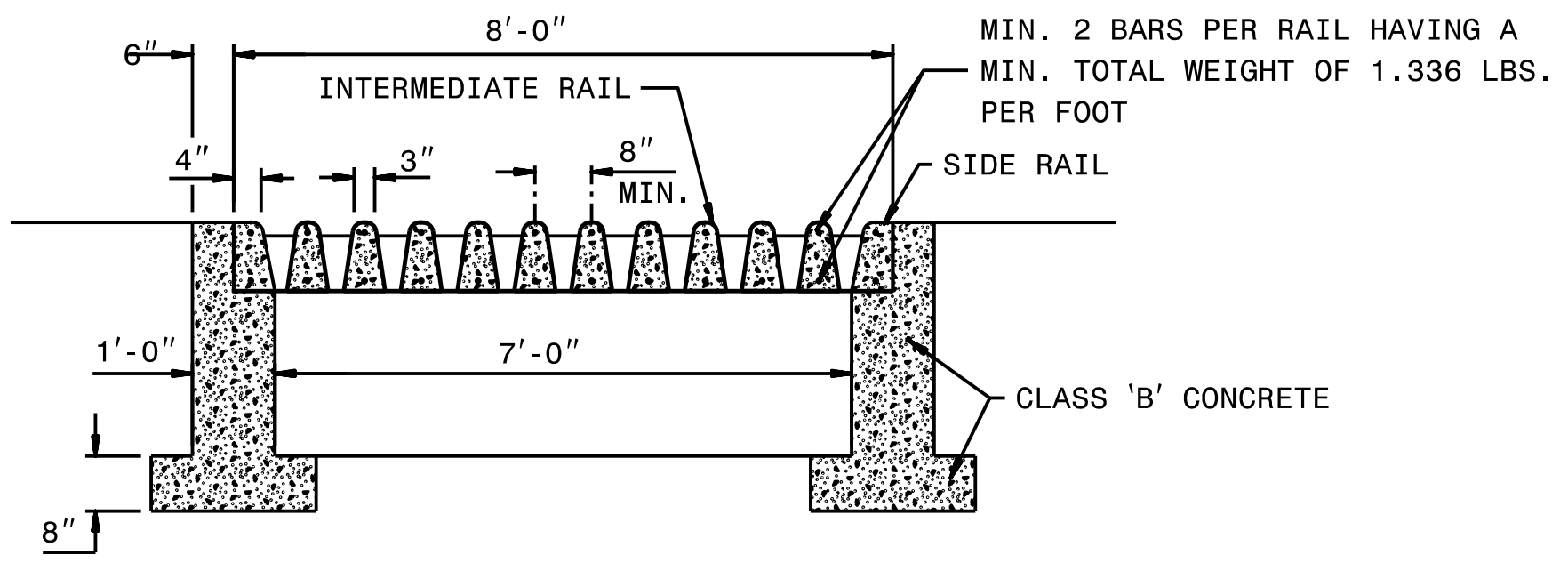
STATE OF NORTH CAROLINA  
DEPT. OF TRANSPORTATION  
DIVISION OF HIGHWAYS  
RALEIGH, N.C.

ENGLISH DETAIL DRAWING FOR  
**CATTLEGUARD**

SHEET 1 OF 1  
**CATTLE**



**INSET 'A'**



**SECTION 'A-A'**

**GENERAL NOTES:**

ANY MANUFACTURER'S FABRICATION MEETING OR EXCEEDING THE MINIMUM DESIGN REQUIREMENTS DETAILED HEREIN WILL BE ACCEPTABLE.

ALL CONCRETE IN PRECAST MEMBERS TO BE 4000 PSI. CONCRETE IN FOOTINGS TO BE CLASS 'B'.

**MINIMUM SECTIONAL AREA OF MEMBERS**

INTERMEDIATE RAIL	20 SQ. IN.
SIDE RAIL	50 SQ. IN.
BEAM	46 SQ. IN.

STATE OF NORTH CAROLINA  
DEPT. OF TRANSPORTATION  
DIVISION OF HIGHWAYS  
RALEIGH, N.C.

ENGLISH DETAIL DRAWING FOR  
**CATTLEGUARD**

SHEET 1 OF 1  
**CATTLE**



7/27/2022

**DESIGN SERVICES UNIT  
STANDARDS AND SPECIAL DESIGN**  
Office 919-250-4128 FAX 919-250-4119

**SEE PLATE FOR TITLE**

ORIGINAL BY: T. STEPHENSON	DATE: 12-96
MODIFIED BY:	DATE:
CHECKED BY:	DATE:
FILE SPEC.: DS37:\usr\details\stand\cattle.dgn	