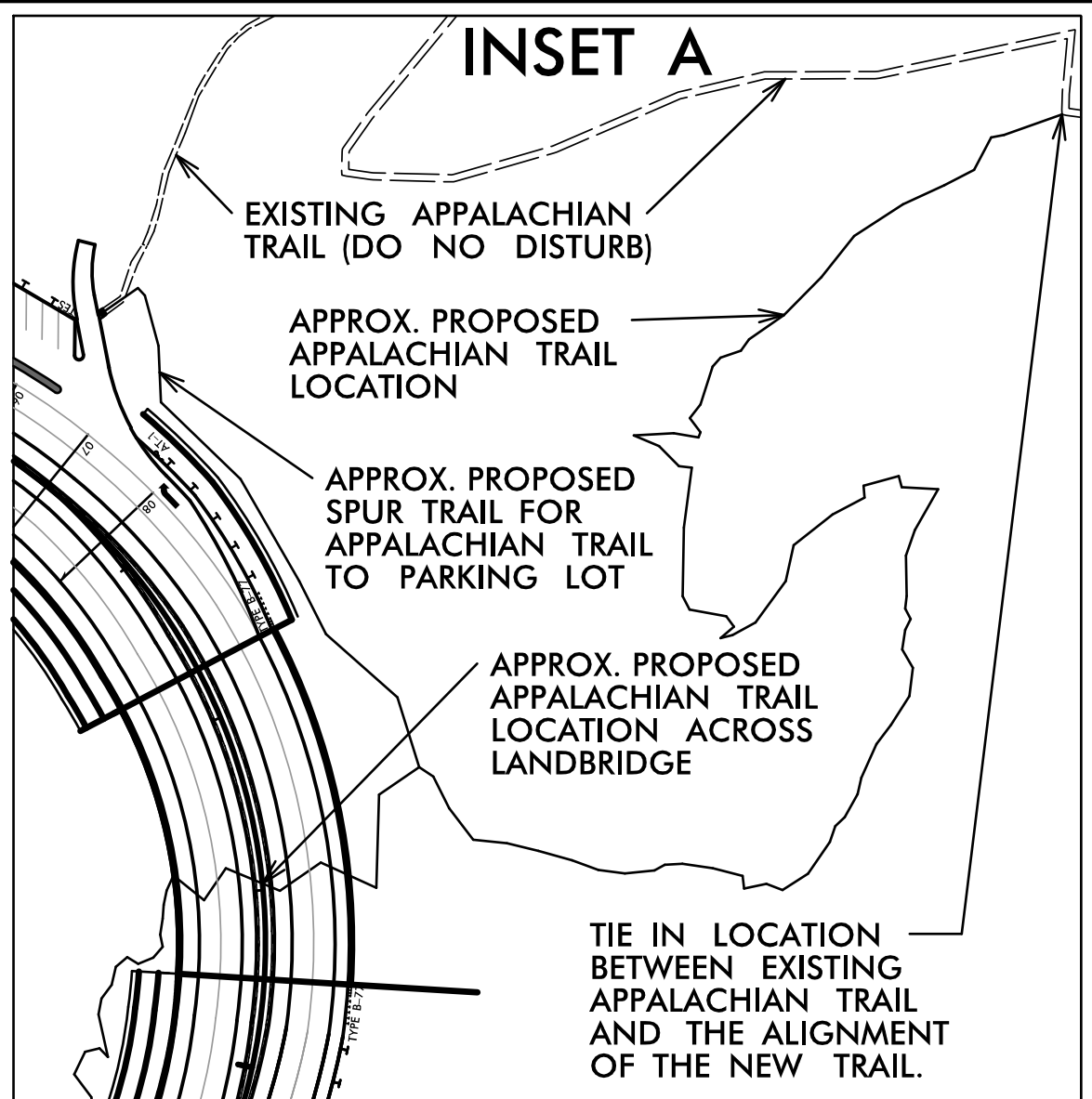
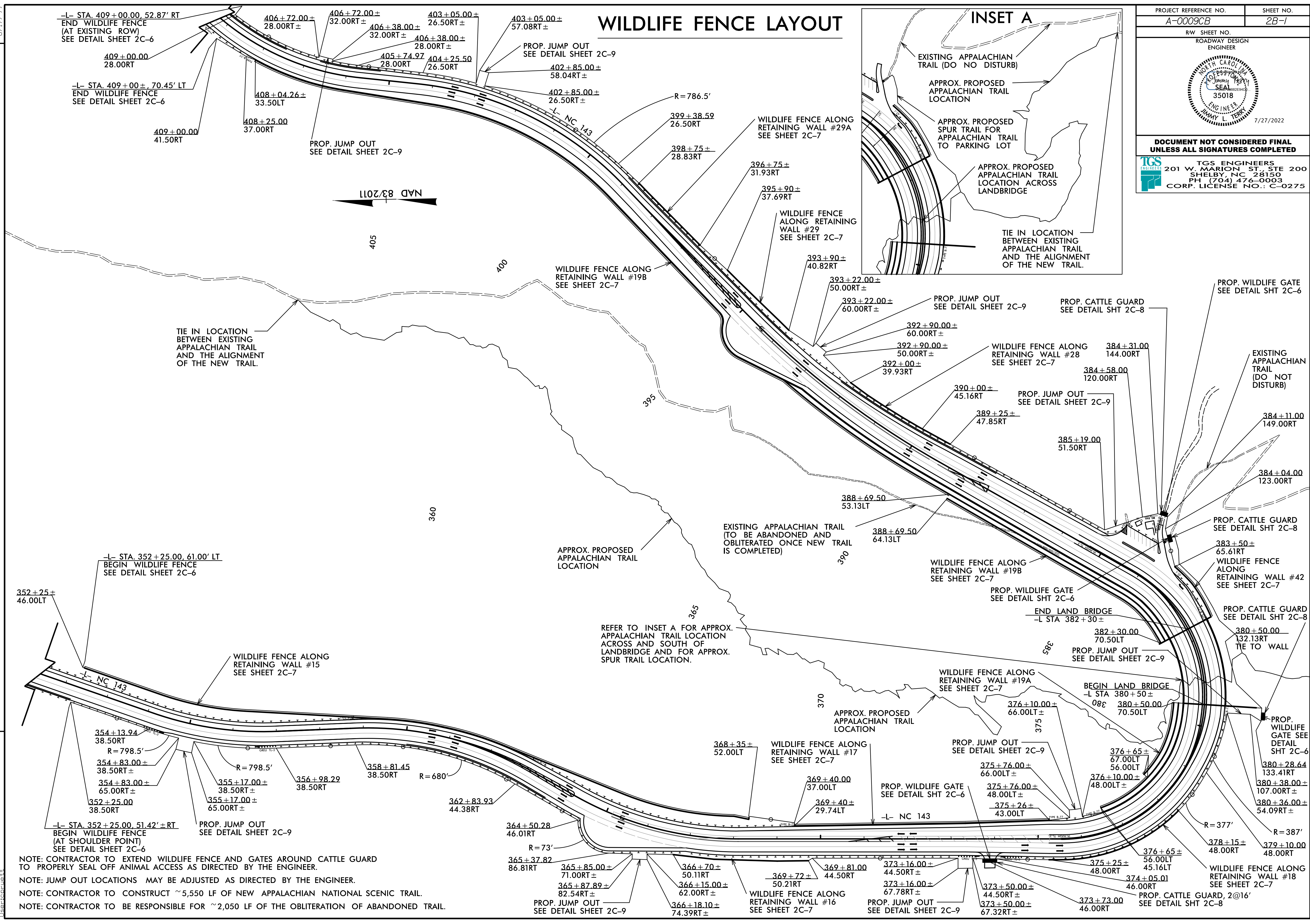


8/17/19

WILDLIFE FENCE LAYOUT



PROJECT REFERENCE NO. A-0009CB	SHEET NO. 2B-1
RW/ SHEET NO. ROADWAY DESIGN ENGINEER	
DOCUMENT NOT CONSIDERED FINAL UNLESS ALL SIGNATURES COMPLETED	
TGS ENGINEERS 201 W. MARION ST., STE 200 SHELBY, NC 28150 PH (704) 476-0003 CORP. LICENSE NO.: C-0275	



NOTE: CONTRACTOR TO EXTEND WILDLIFE FENCE AND GATES AROUND CATTLE GUARD TO PROPERLY SEAL OFF ANIMAL ACCESS AS DIRECTED BY THE ENGINEER.

NOTE: JUMP OUT LOCATIONS MAY BE ADJUSTED AS DIRECTED BY THE ENGINEER.

NOTE: CONTRACTOR TO CONSTRUCT ~5,550 LF OF NEW APPALACHIAN NATIONAL SCENIC TRAIL.

NOTE: CONTRACTOR TO BE RESPONSIBLE FOR ~2,050 LF OF THE OBLITERATION OF ABANDONED TRAIL.

REVISIONS

X:\Projects\A-0009CB\Roadway\Proj\A-0009CB_Plan_Sheets\A-0009CB_Rdwy_Detail_Sht_2B-01\Wildlife Fence Layout.dgn
 7/14/2022