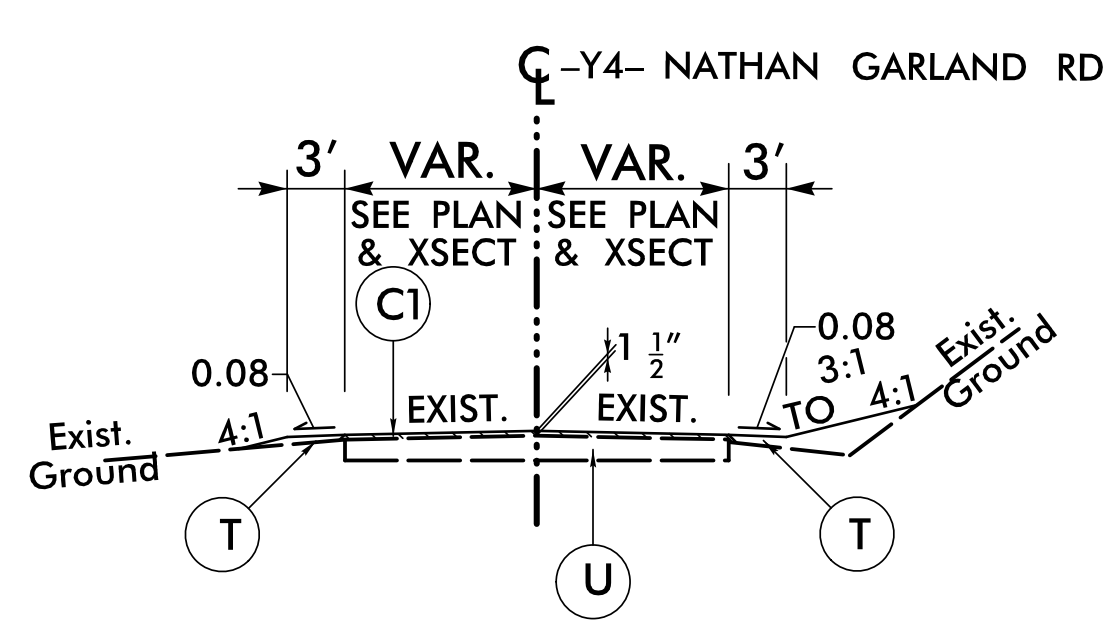


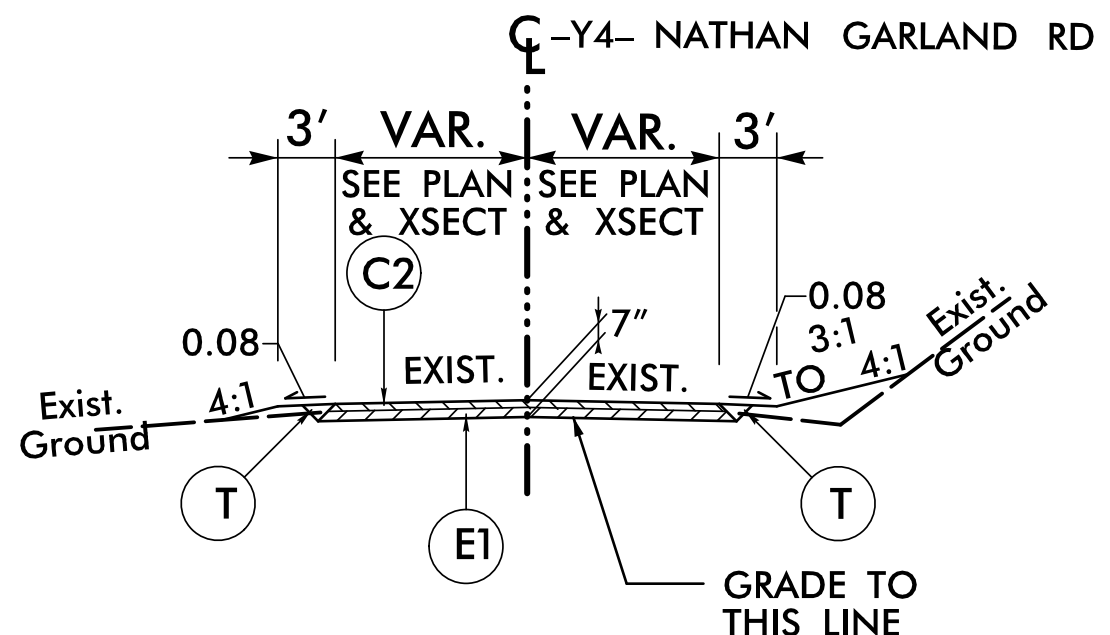
6/2/2022

PAVEMENT SCHEDULE	
C1	1.5" S9.5C
C2	3" S9.5C
D2	2 1/2" I19.0C
E1	4" B25.0C
K	CL IV SUBGRADE STABILIZATION
N	GEOTEXTILE FOR PAVEMENT STABILIZATION
R4	SHOULDER BERM GUTTER
T	EARTH MATERIAL
U	EXISTING PAVEMENT
W	WEDGING

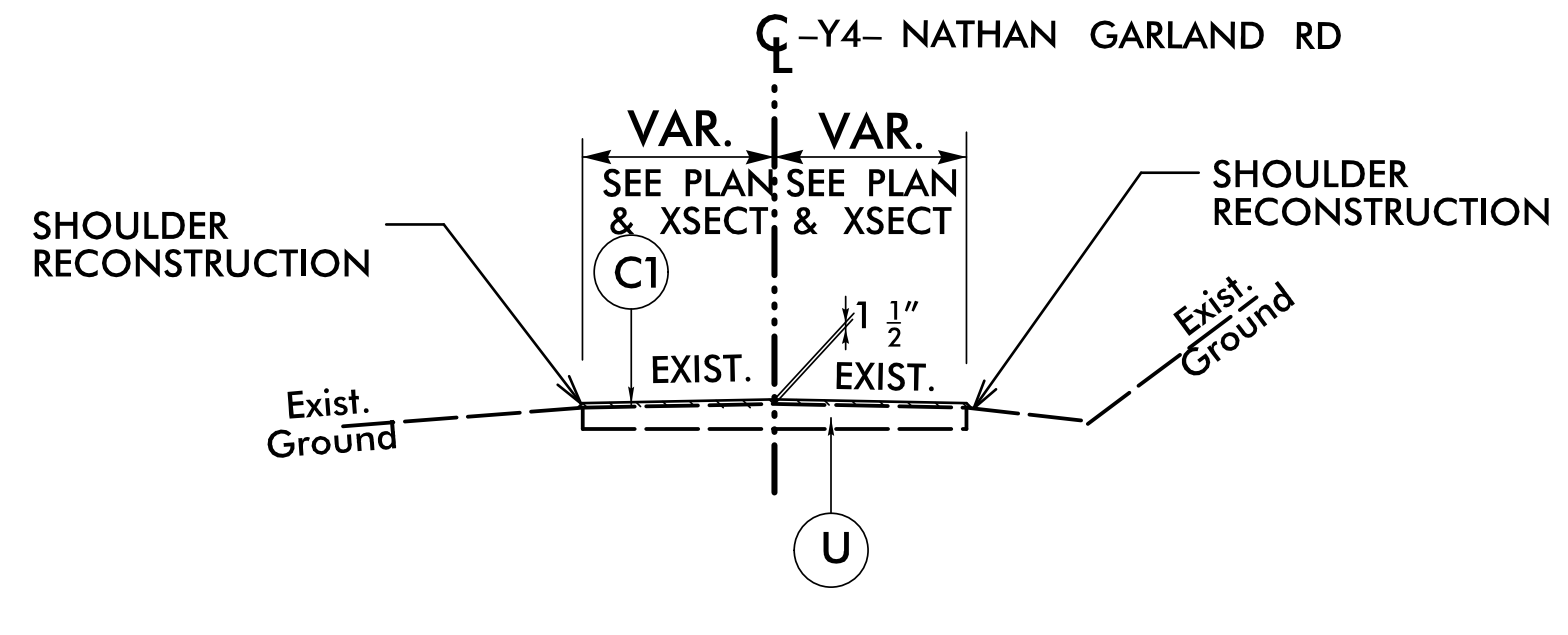
THE TIE-IN ELEVATION WITH -L- ARE AS FOLLOWS:
 -L- STA. 277+89.66, 24' RT @ EL 2359.32'
 -L- STA. 308+34.14, 24' RT @ EL 2596.87'
 WEDGING MAY BE REQUIRED TO ESTABLISH A PROPER TIE-IN, SEE CROSS SECTIONS FOR DETAILS



TYPICAL SECTION NO. 8
 USE TYPICAL SECTION NO. 8
 -Y4- STA. 10+28.12 TO -Y4- STA. 11+75.00



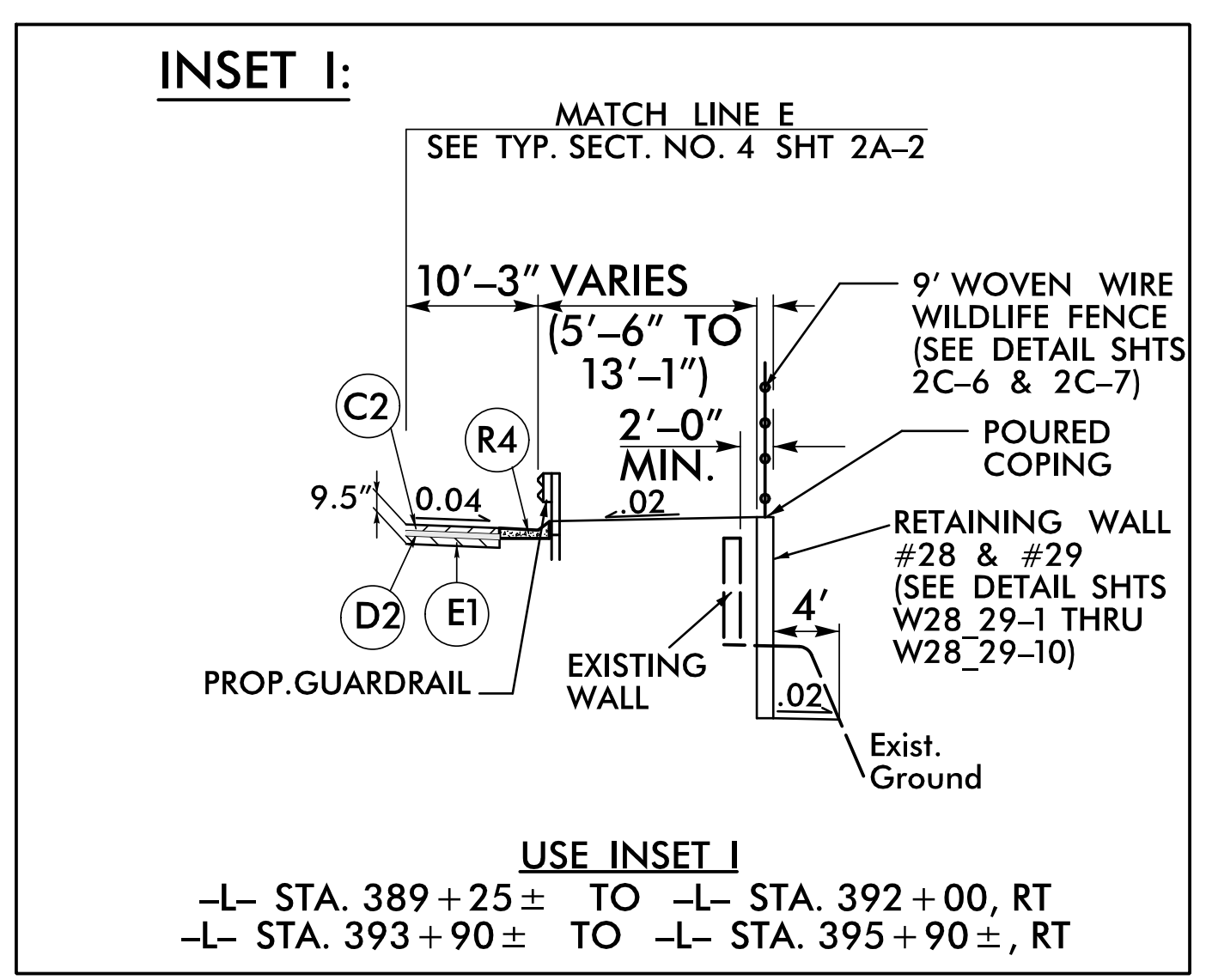
TYPICAL SECTION NO. 9
 USE TYPICAL SECTION NO. 9
 -Y4- STA. 11+75.00 TO -Y4- STA. 12+50.00



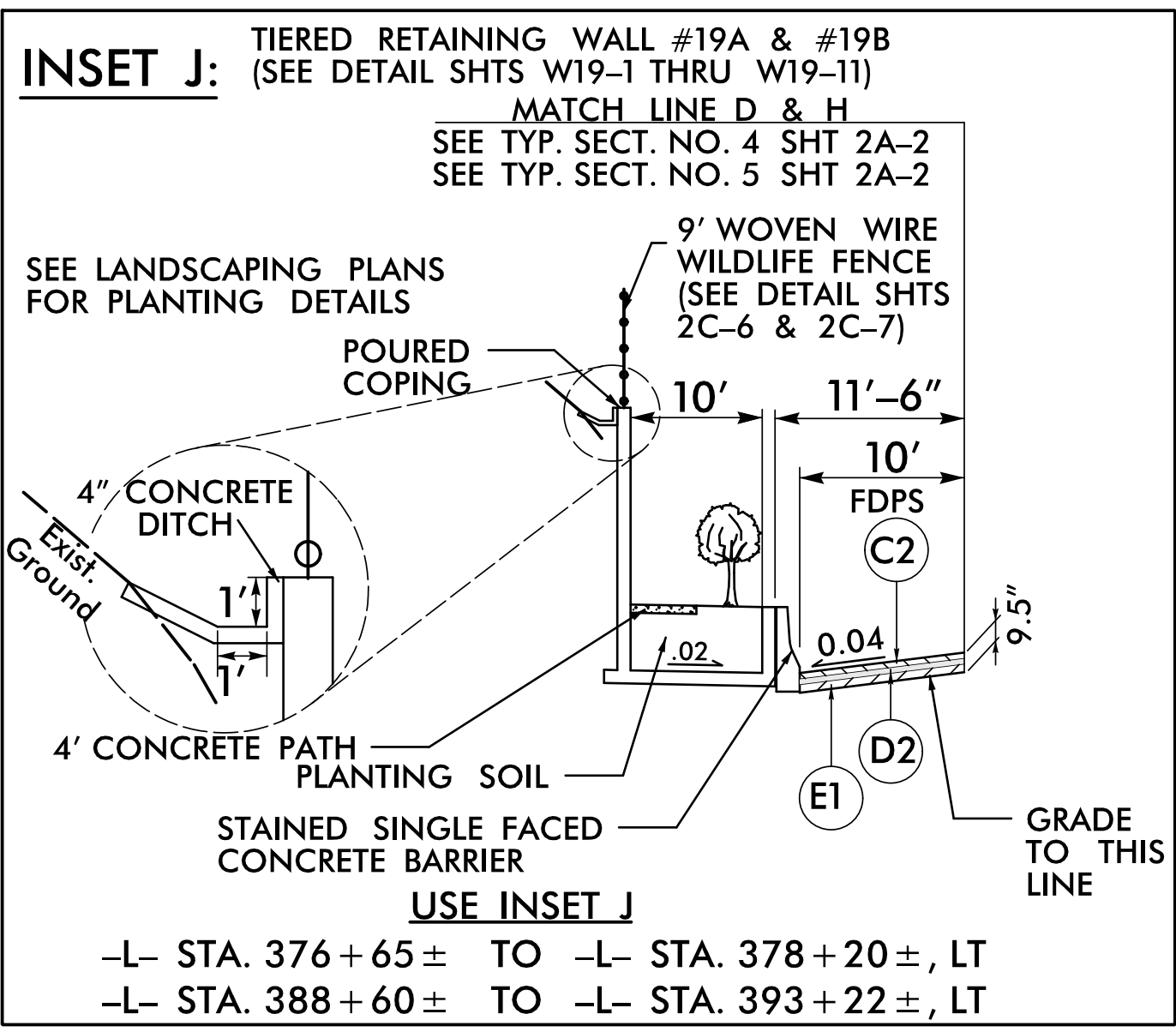
TYPICAL SECTION NO. 10
 USE TYPICAL SECTION NO. 10
 -Y4- STA. 12+50.00 TO -Y4- STA. 44+93.19

PAVEMENT EDGE SLOPES ARE 1:1 UNLESS SHOWN OTHERWISE, SEE SHEET 2A-1 FOR DETAILED PAVEMENT SCHEDULE.

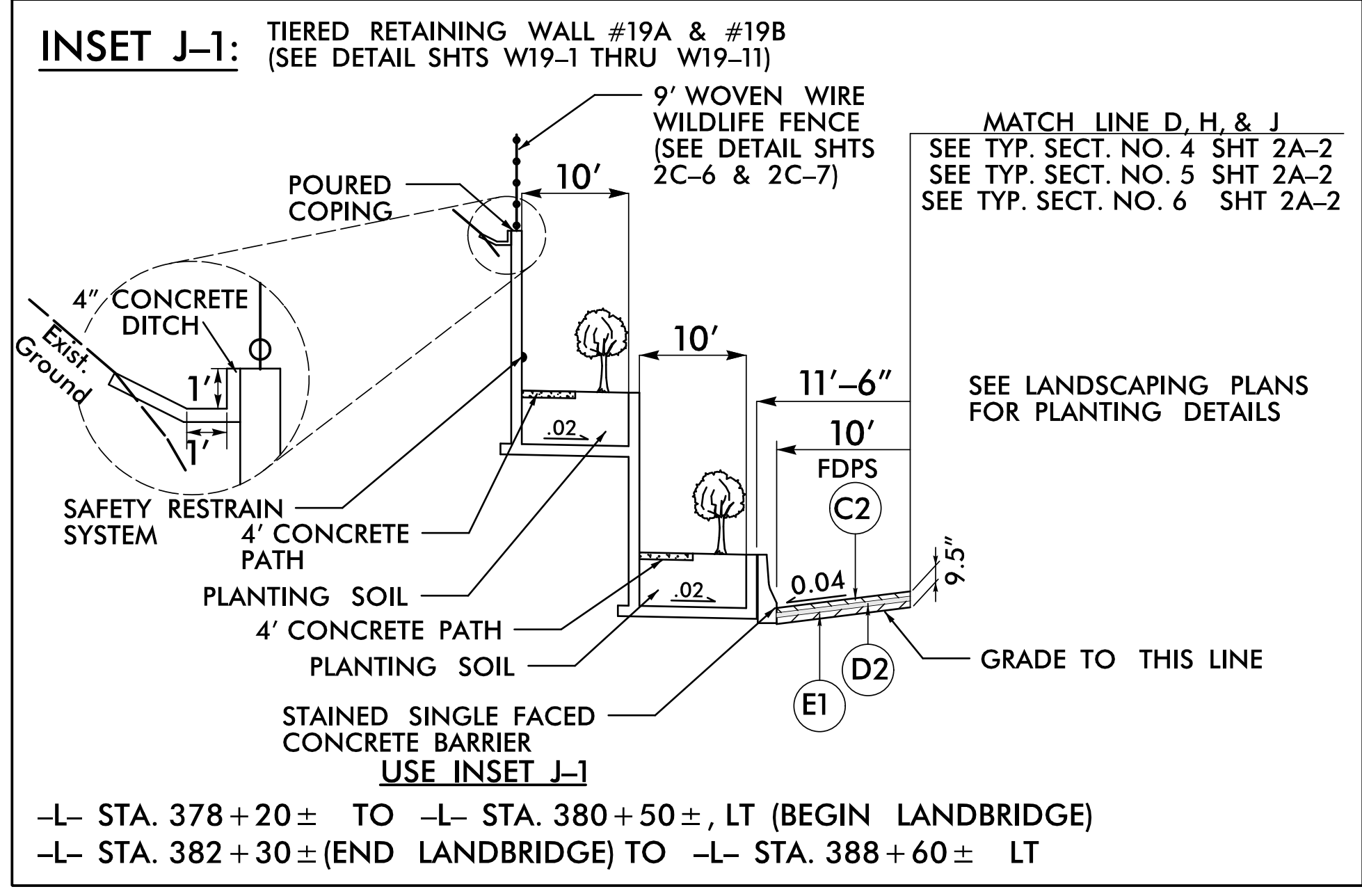
PROJECT REFERENCE NO. A-0009CB	SHEET NO. 2A-4
ROADWAY DESIGN ENGINEER [Signature]	PAVEMENT DESIGN ENGINEER [Signature]
SEAL 35018 ENGINEER JIMMY L. TERRY 7/2022	SEAL 041986 ENGINEER MATTHEW BROWER 7/2022
DOCUMENT NOT CONSIDERED FINAL UNLESS ALL SIGNATURES COMPLETED	
TGS ENGINEERS 201 W. MARION ST SHELBY, NC 28150 PH (704) 476-0003 CORP. LICENSE NO.: C-0275	



USE INSET I
 -L- STA. 389+25± TO -L- STA. 392+00, RT
 -L- STA. 393+90± TO -L- STA. 395+90±, RT



USE INSET J
 -L- STA. 376+65± TO -L- STA. 378+20±, LT
 -L- STA. 388+60± TO -L- STA. 393+22±, LT

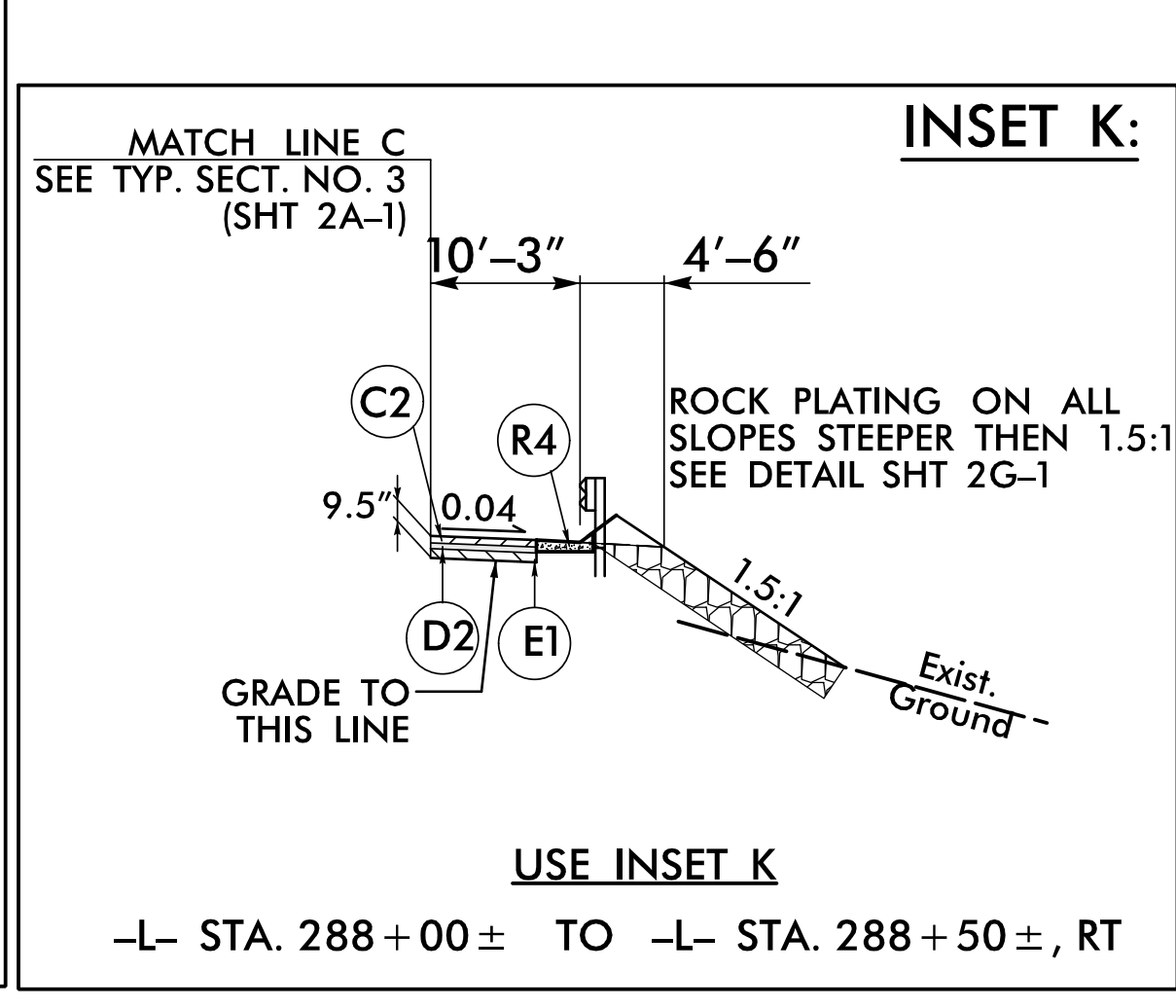


USE INSET J-1
 -L- STA. 378+20± TO -L- STA. 380+50±, LT (BEGIN LANDBRIDGE)
 -L- STA. 382+30± (END LANDBRIDGE) TO -L- STA. 388+60± LT

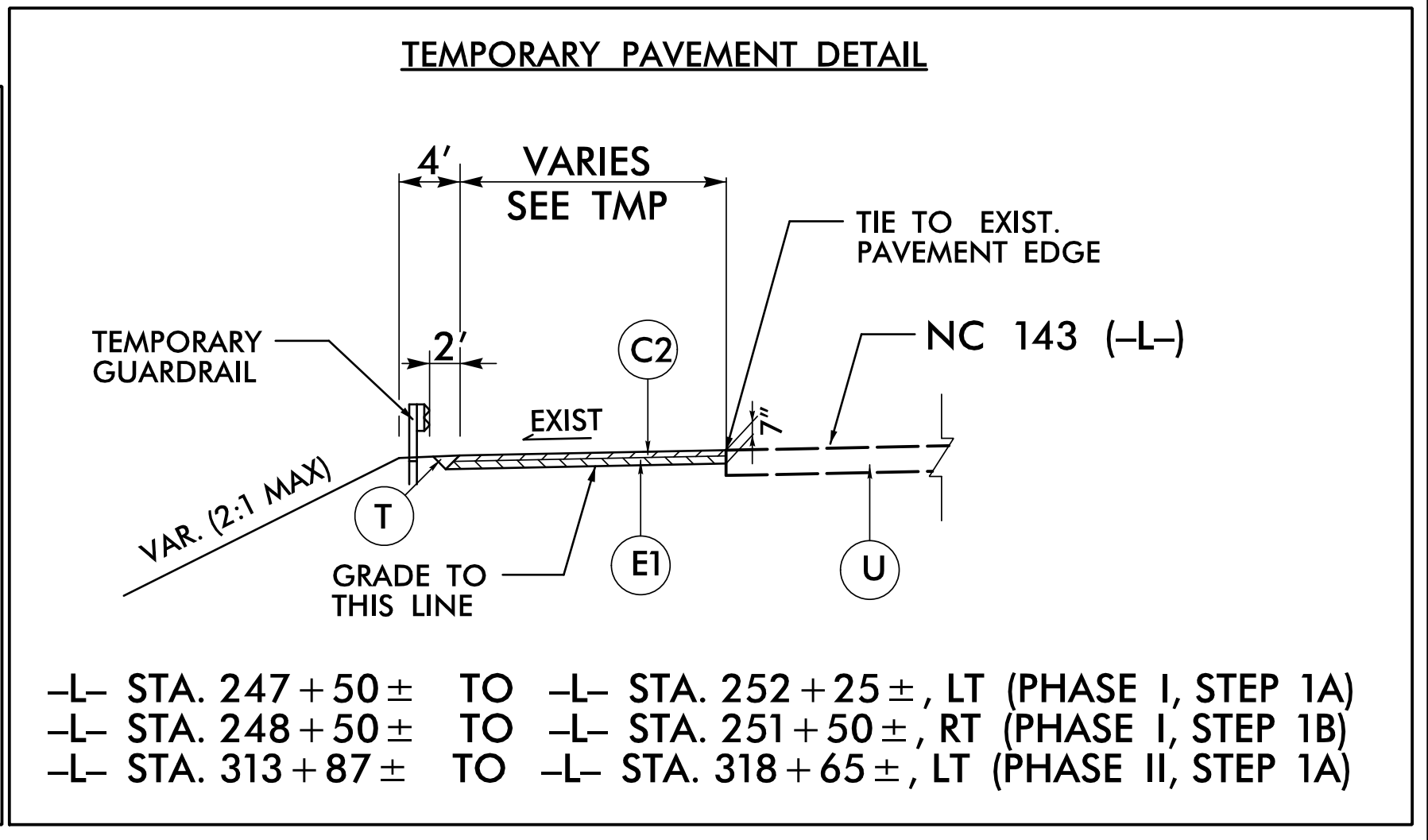
GEOTEXTILE FOR PAVEMENT STABILIZATION DETAIL

STA TO STA	LOC
-L- STA. 278+25 TO -L- STA. 278+75	LT
-L- STA. 279+75 TO -L- STA. 282+75	LT
-L- STA. 288+25 TO -L- STA. 290+25	LT & RT
-L- STA. 292+25 TO -L- STA. 294+75	LT & RT
-L- STA. 310+75 TO -L- STA. 313+25	RT
-L- STA. 366+75 TO -L- STA. 370+25	RT
-L- STA. 375+25 TO -L- STA. 378+25	RT
-L- STA. 389+25 TO -L- STA. 392+25	RT
-L- STA. 393+75 TO -L- STA. 395+75	RT
-L- STA. 396+75 TO -L- STA. 398+75	RT

AREAS WILL BE INVESTIGATED DURING CONSTRUCTION



USE INSET K
 -L- STA. 288+00± TO -L- STA. 288+50±, RT



TEMPORARY PAVEMENT DETAIL
 -L- STA. 247+50± TO -L- STA. 252+25±, LT (PHASE I, STEP 1A)
 -L- STA. 248+50± TO -L- STA. 251+50±, RT (PHASE I, STEP 1B)
 -L- STA. 313+87± TO -L- STA. 318+65±, LT (PHASE II, STEP 1A)

X:\K\2022\A-0009CB\Roadway\Proj\A-0009CB_Plan_Sheets\A-0009CB_Rdty_typ.dgn
 7/15/2022 10:00 AM
 User: jlsalmon