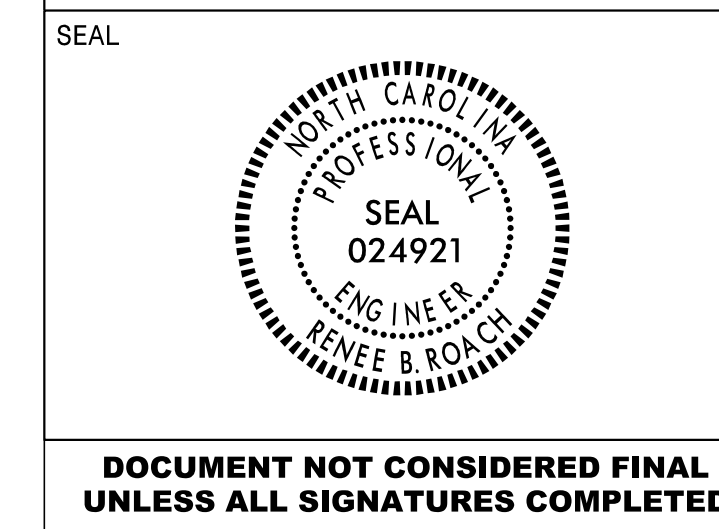


APPROVED: *Renee B. Roach*
 DATE: 06/29/2022



DOCUMENT NOT CONSIDERED FINAL UNLESS ALL SIGNATURES COMPLETED

SIGN NUMBER: 7018,7028,7038,7048 BACKG COLOR: Green
 TYPE: B COPY COLOR: White
 QUANTITY: 4
 SIGN WIDTH: 9'-6"
 HEIGHT: 2'-6"
 TOTAL AREA: 23.8 Sq.-Ft.
 BORDER TYPE: FLUSH
 RECESS: 0"
 WIDTH: 2"
 RADII: 3"
 NO. Z BARS: 2
 LENGTH: 106.0
 MAT'L: 0.125" (3.2 mm) ALUMINUM

DESIGN BY: E WARD CHECKED BY: Oct 13, 2021
 PROJECT ID: I-5950 LOCATION: DIV: 9

USE NOTES:
 1. Legend and border(except those that are colored black) shall be direct applied Grade C sheeting.
 2. Background shall be Grade C reflective sheeting.
 3. Shields; A, B, and C type arrows shall be on 0.032" (0.8mm) aluminum and demountable.

Spacing Factor is 1 unless specified otherwise

Letter spacings are to start of next letter										Series/Size
	E	X	I	T						Text Length
	24.1	9.2	11.1	3.8	7.5	58.3				E 2000
		9	1							31.6
										E 2000
	70.7	14.7	4.5	24.1						19.2

FILENAME: I-5950 Guidesign NORTH CAROLINA D.O.T. SIGN DETAIL

SIGN NUMBER: 705B,706B,707B,708B BACKG COLOR: Green
 TYPE: B COPY COLOR: White
 QUANTITY: 4
 SIGN WIDTH: 9'-6"
 HEIGHT: 2'-6"
 TOTAL AREA: 23.8 Sq.-Ft.
 BORDER TYPE: FLUSH
 RECESS: 0"
 WIDTH: 2"
 RADII: 3"
 NO. Z BARS: 2
 LENGTH: 106.0
 MAT'L: 0.125" (3.2 mm) ALUMINUM

DESIGN BY: E WARD CHECKED BY: Oct 13, 2021
 PROJECT ID: I-5950 LOCATION: DIV: 9

USE NOTES:
 1. Legend and border(except those that are colored black) shall be direct applied Grade C sheeting.
 2. Background shall be Grade C reflective sheeting.
 3. Shields; A, B, and C type arrows shall be on 0.032" (0.8mm) aluminum and demountable.

Spacing Factor is 1 unless specified otherwise

Letter spacings are to start of next letter										Series/Size
	E	X	I	T						Text Length
	19.7	9.2	11.1	3.8	7.5	62.6				E 2000
		9	4							31.6
										E 2000
	66.4	13.8	14.1	19.7						27.9

FILENAME: I-5950 Guidesign NORTH CAROLINA D.O.T. SIGN DETAIL

SIGN NUMBER: 709,710 BACKG COLOR: Green
 TYPE: A COPY COLOR: White
 QUANTITY: 2
 SIGN WIDTH: 6'-6"
 HEIGHT: 5'-0"
 TOTAL AREA: 32.5 Sq.-Ft.
 BORDER TYPE: FLUSH
 RECESS: 0"
 WIDTH: 1.5"
 RADII: 6"
 NO. Z BARS: 2
 LENGTH: 70.0
 MAT'L: 0.125" (3.2 mm) ALUMINUM

DESIGN BY: E WARD CHECKED BY: Oct 13, 2021
 PROJECT ID: I-5950 LOCATION: DIV: 9

USE NOTES:
 1. Legend and border(except those that are colored black) shall be direct applied Grade C sheeting.
 2. Background shall be Grade C reflective sheeting.
 3. Shields; A, B, and C type arrows shall be on 0.032" (0.8mm) aluminum and demountable.

Spacing Factor is 1 unless specified otherwise

Letter spacings are to start of next letter										Series/Size
	E	X	I	T						Text Length
	19.5	12.8	15.8	6.8	9	14.1				E 2000
		9	1							44.4
										E 2000
	12.5	17.6	5.4	42.5						23

FILENAME: I-5950 Guidesign NORTH CAROLINA D.O.T. SIGN DETAIL

SIGN NUMBER: 711,712 BACKG COLOR: Green
 TYPE: A COPY COLOR: White
 QUANTITY: 2
 SIGN WIDTH: 6'-6"
 HEIGHT: 5'-0"
 TOTAL AREA: 32.5 Sq.-Ft.
 BORDER TYPE: FLUSH
 RECESS: 0"
 WIDTH: 1.5"
 RADII: 6"
 NO. Z BARS: 2
 LENGTH: 70.0
 MAT'L: 0.125" (3.2 mm) ALUMINUM

DESIGN BY: E WARD CHECKED BY: Oct 13, 2021
 PROJECT ID: I-5950 LOCATION: DIV: 9

USE NOTES:
 1. Legend and border(except those that are colored black) shall be direct applied Grade C sheeting.
 2. Background shall be Grade C reflective sheeting.
 3. Shields; A, B, and C type arrows shall be on 0.032" (0.8mm) aluminum and demountable.

Spacing Factor is 1 unless specified otherwise

Letter spacings are to start of next letter										Series/Size
	E	X	I	T						Text Length
	19.5	12.8	15.8	6.8	9	14.1				E 2000
		9	4							44.4
										E 2000
	8	16.6	16.9	36.5						33.5

FILENAME: I-5950 Guidesign NORTH CAROLINA D.O.T. SIGN DETAIL

06/28/22 S:\S&DU\Western Region\Div 9\I-5950\I-5950 Guidesign.dgn User:ereward

TYPE A & B SIGN DESIGNS