

3

MESSAGE NO. 1	MESSAGE NO. 2
EXIT 94 CLOSED 1 MILE	OLD 64 DETOUR EXIT 96

CHANGEABLE MESSAGE SIGN DURING CLOSURE

4

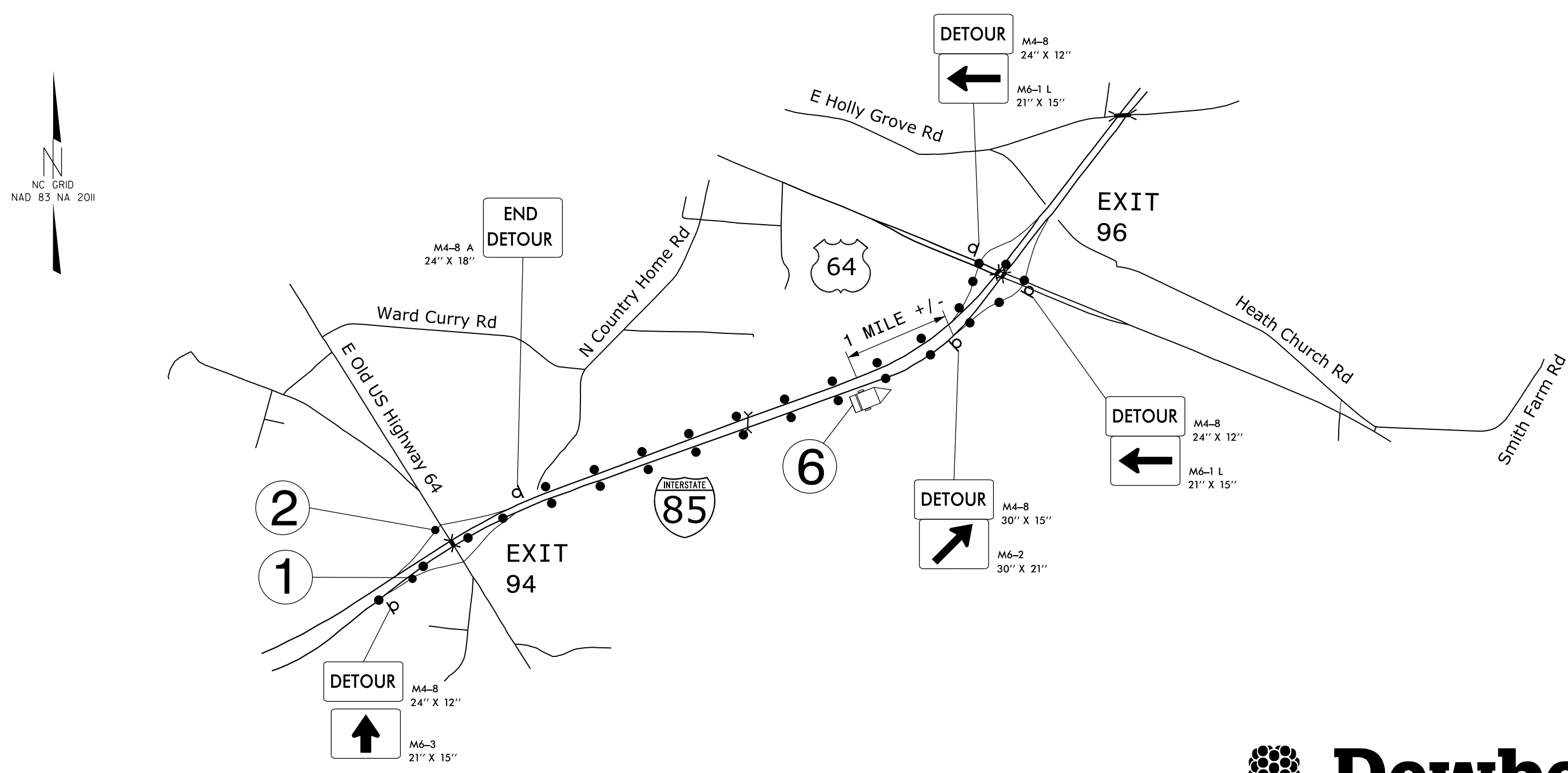
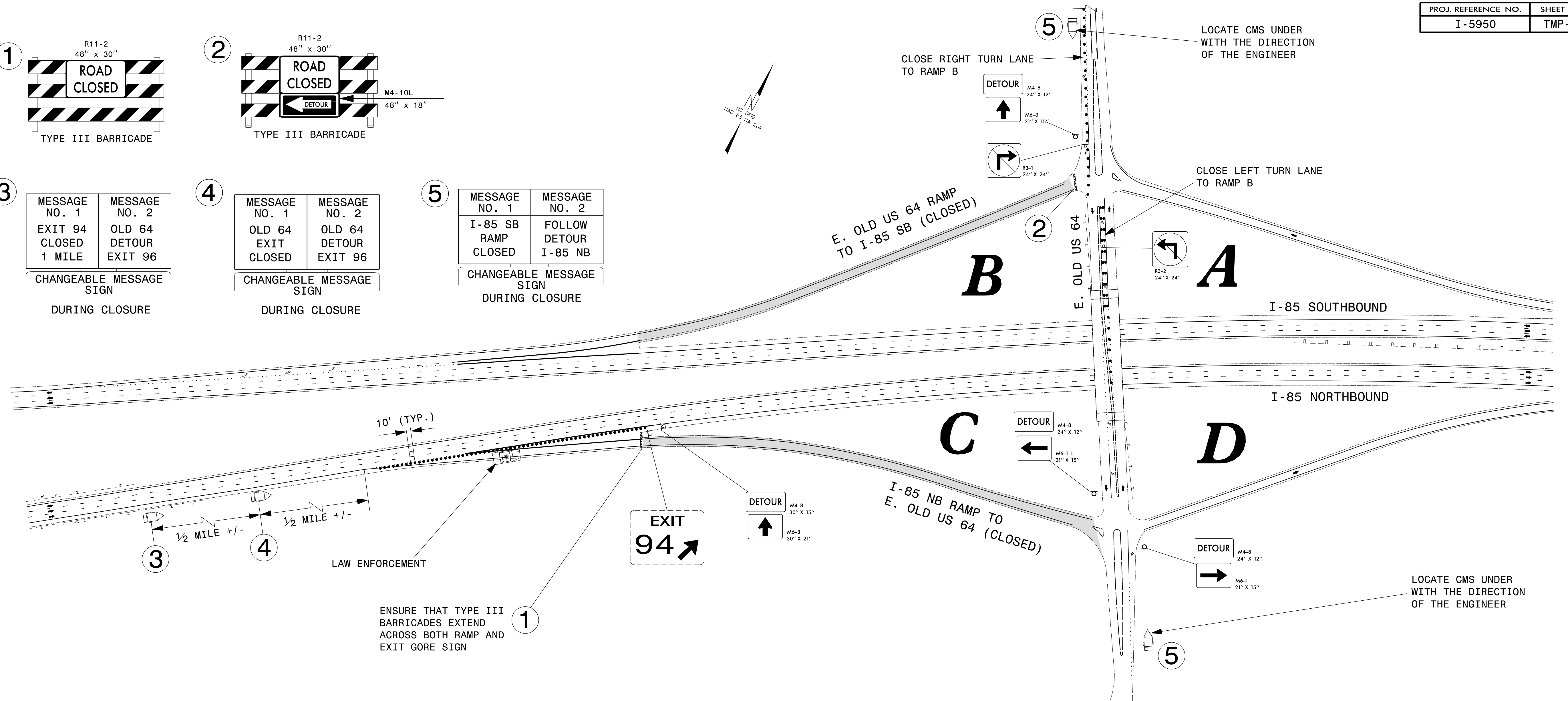
MESSAGE NO. 1	MESSAGE NO. 2
OLD 64 EXIT CLOSED	OLD 64 DETOUR EXIT 96

CHANGEABLE MESSAGE SIGN DURING CLOSURE

5

MESSAGE NO. 1	MESSAGE NO. 2
I-85 SB RAMP CLOSED	FOLLOW DETOUR I-85 NB

CHANGEABLE MESSAGE SIGN DURING CLOSURE



6

MESSAGE NO. 1	MESSAGE NO. 2
EXIT 94 CLOSED OVERNITE	OLD 64 DETOUR EXIT 96

CHANGEABLE MESSAGE SIGN DAY BEFORE CLOSURE

MESSAGE NO. 1	MESSAGE NO. 2
EXIT 94 OLD 64 CLOSED	OLD 64 DETOUR EXIT 96

CHANGEABLE MESSAGE SIGN DURING CLOSURE

DETOUR ROUTE TO BE USED DURING CLOSURE OF OLD US 64 RAMPS B & C

RAMP B TRAFFIC WILL ACCESS I-85 NB USING RAMP D. ONCE ON I-85 NB, CONTINUE TO EXIT 96 AND ACCESS I-85 SB VIA THAT INTERCHANGE.

RAMP C TRAFFIC WILL CONTINUE TO EXIT 96 AND USE THAT INTERCHANGE TO ACCESS I-85 SB. TAKE I-85 SB TO EXIT 94 RAMP A.

24-JUN-2022 11:27 P:\50152556\CAD\CIVIL\Plans\200\_040\_15950\_TC\_TCP\_31.dgn jwiles AT 890K8AV4

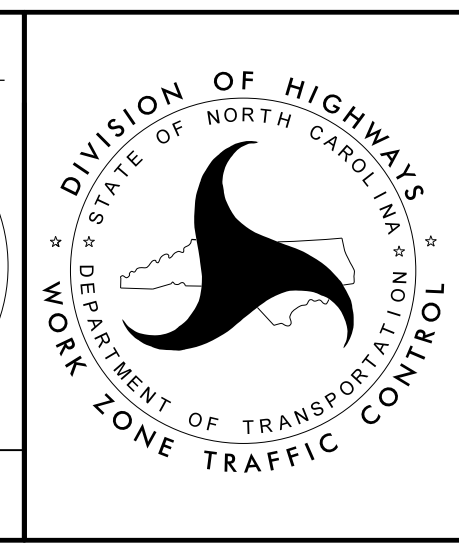


2610 WYCLIFF ROAD  
SUITE 410  
RALEIGH, NC 27607  
PHONE: 919.881.9939  
NC COA No. F-0929

APPROVED: *[Signature]*  
DATE: 6/29/2022

SEAL

**DOCUMENT NOT CONSIDERED FINAL UNLESS ALL SIGNATURES COMPLETED**



**E. OLD US 64 RAMPS B & C DETOUR ROUTES**

DEPARTMENT OF TRANSPORTATION WORK ZONE TRAFFIC CONTROL