

MESSAGE NO. 1	MESSAGE NO. 2
EXIT 88 CLOSED 1 MILE	NC 47 DETOUR EXIT 87

MESSAGE NO. 1	MESSAGE NO. 2
NC 47 EXIT CLOSED	NC 47 DETOUR EXIT 87

MESSAGE NO. 1	MESSAGE NO. 2
I-85 SB RAMP CLOSED	FOLLOW DETOUR

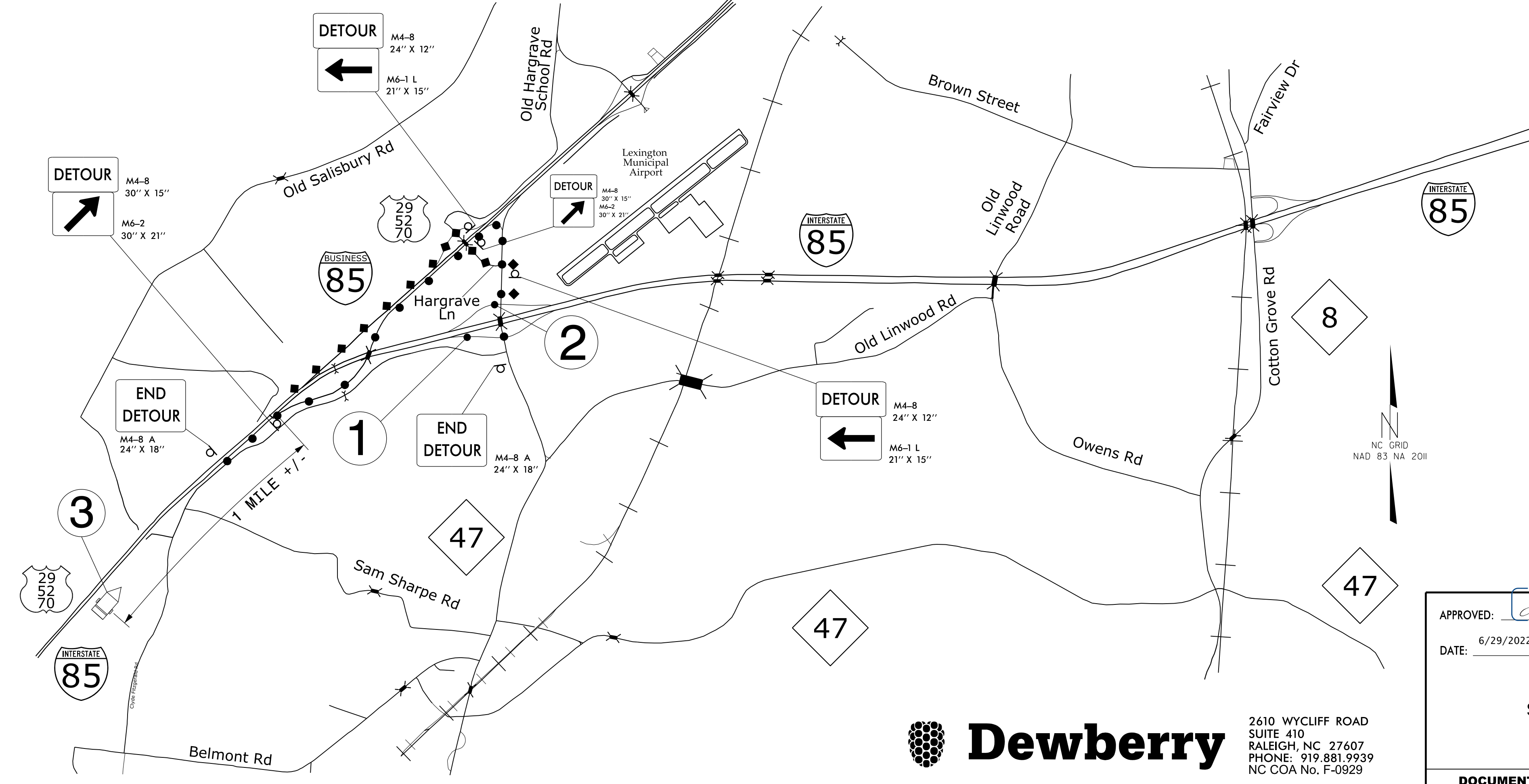
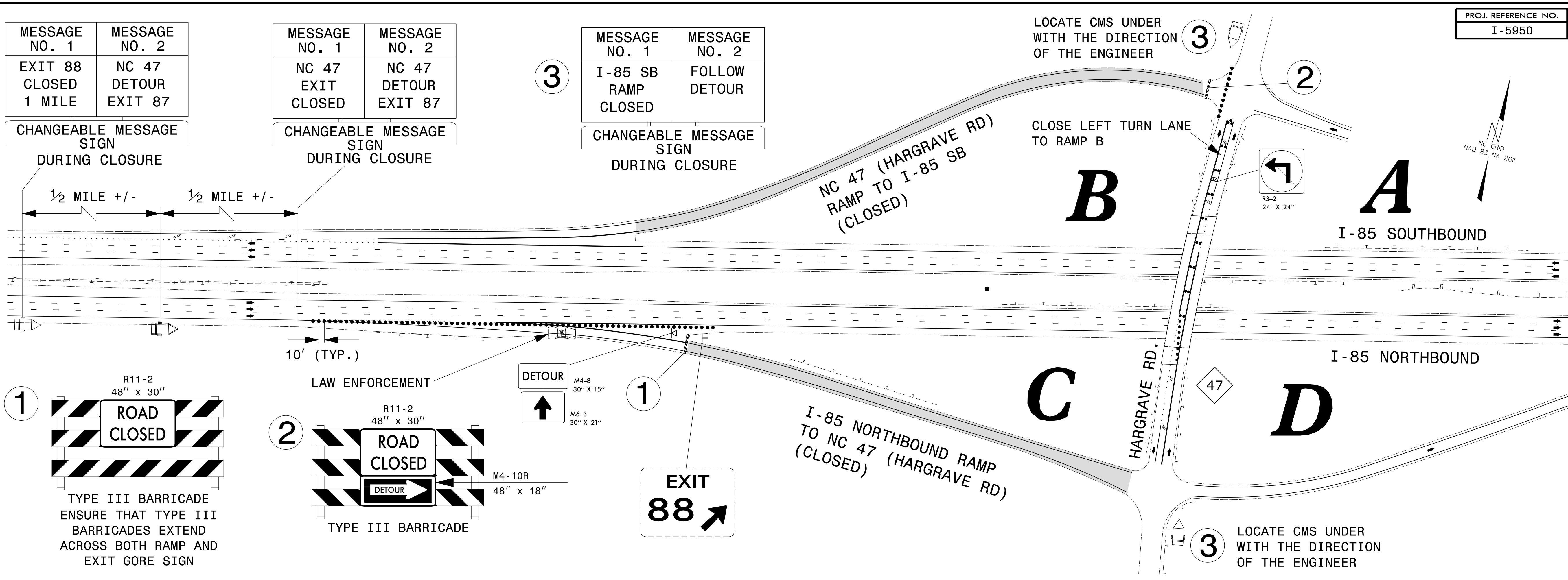
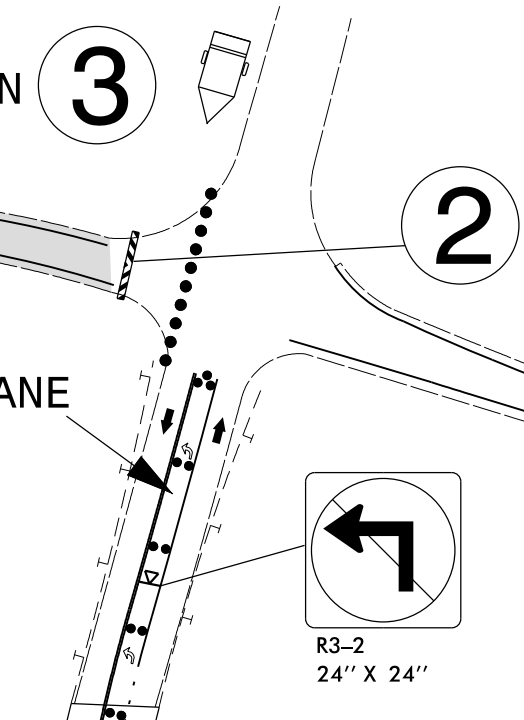
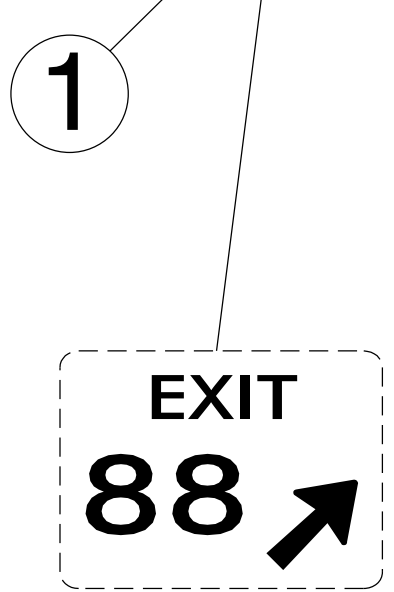
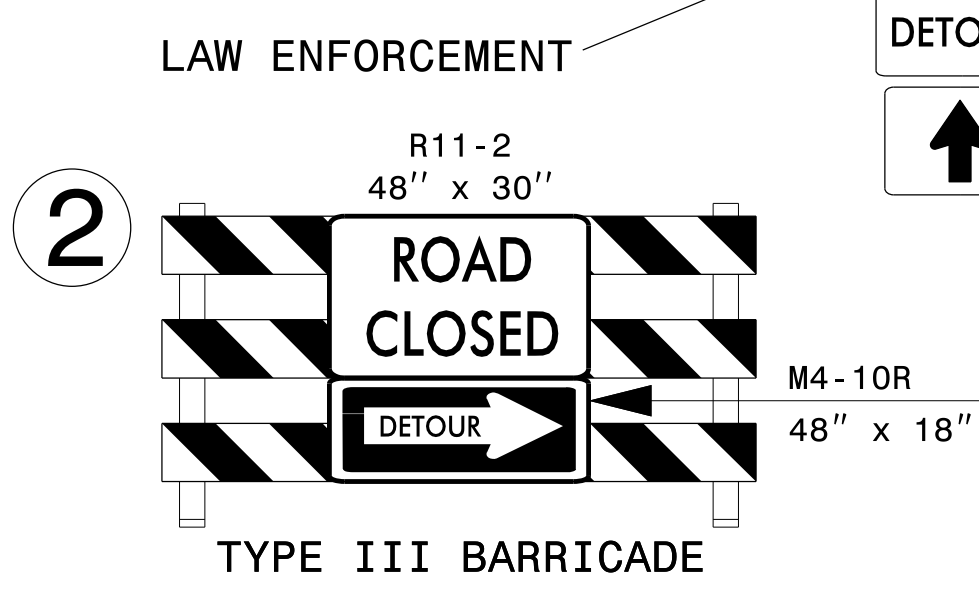
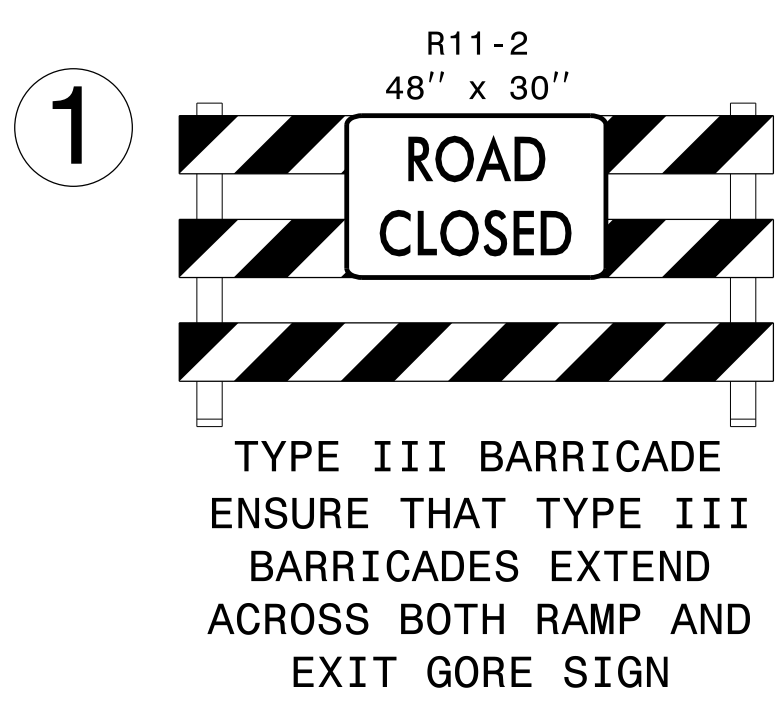
LOCATE CMS UNDER WITH THE DIRECTION OF THE ENGINEER

CHANGEABLE MESSAGE SIGN DURING CLOSURE

CHANGEABLE MESSAGE SIGN DURING CLOSURE

CHANGEABLE MESSAGE SIGN DURING CLOSURE

1/2 MILE +/- 1/2 MILE +/-



USE IN CONJUNCTION WITH OTHER DMSs SHOWN ON THIS SHEET

MESSAGE NO. 1	MESSAGE NO. 2	MESSAGE NO. 1	MESSAGE NO. 2
EXIT 88 CLOSED OVERNITE	NC 47 DETOUR EXIT 87	EXIT 88 NC 47 CLOSED	NC 47 DETOUR EXIT 87

CHANGEABLE MESSAGE SIGN DAY BEFORE CLOSURE      CHANGEABLE MESSAGE SIGN DURING CLOSURE

DETOUR ROUTE TO BE USED DURING CLOSURE OF NC 47 RAMP B **1.4 MILES**

DETOUR ROUTE TO BE USED DURING CLOSURE OF NC 47 RAMP C **1.8 MILES**

24-JUN-2022 11:27 P:\50152556\CAD\CIVIL\Plans\200\_036\_15950\_TC.TCP\_27.dgn J:\wiles

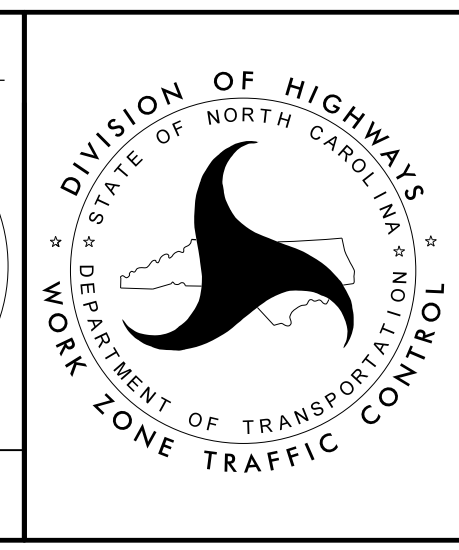


2610 WYCLIFF ROAD  
SUITE 410  
RALEIGH, NC 27607  
PHONE: 919.881.9939  
NC COA No. F-0929

APPROVED: *[Signature]*  
DATE: 6/29/2022

SEAL

DOCUMENT NOT CONSIDERED FINAL UNLESS ALL SIGNATURES COMPLETED



DIVISION OF HIGHWAYS  
STATE OF NORTH CAROLINA  
DEPARTMENT OF TRANSPORTATION  
WORK ZONE TRAFFIC CONTROL

**NC 47 (HARGRAVE RD.) RAMP B & C DETOUR ROUTES**