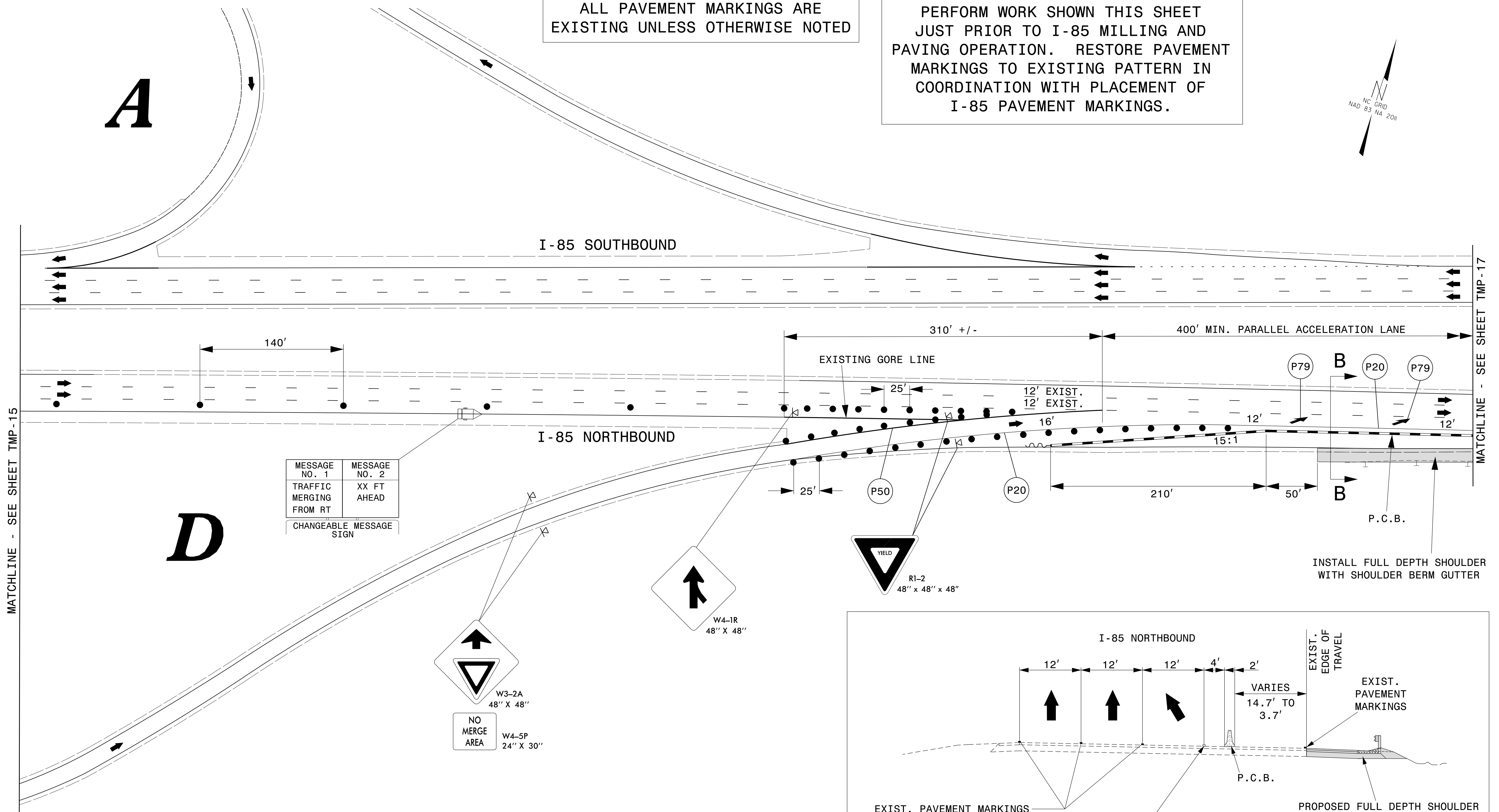
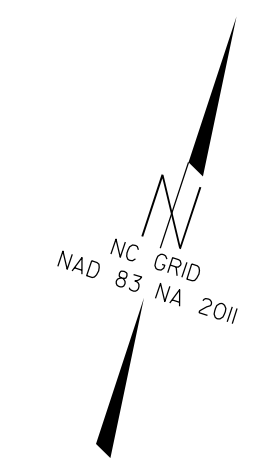


ALL PAVEMENT MARKINGS ARE EXISTING UNLESS OTHERWISE NOTED

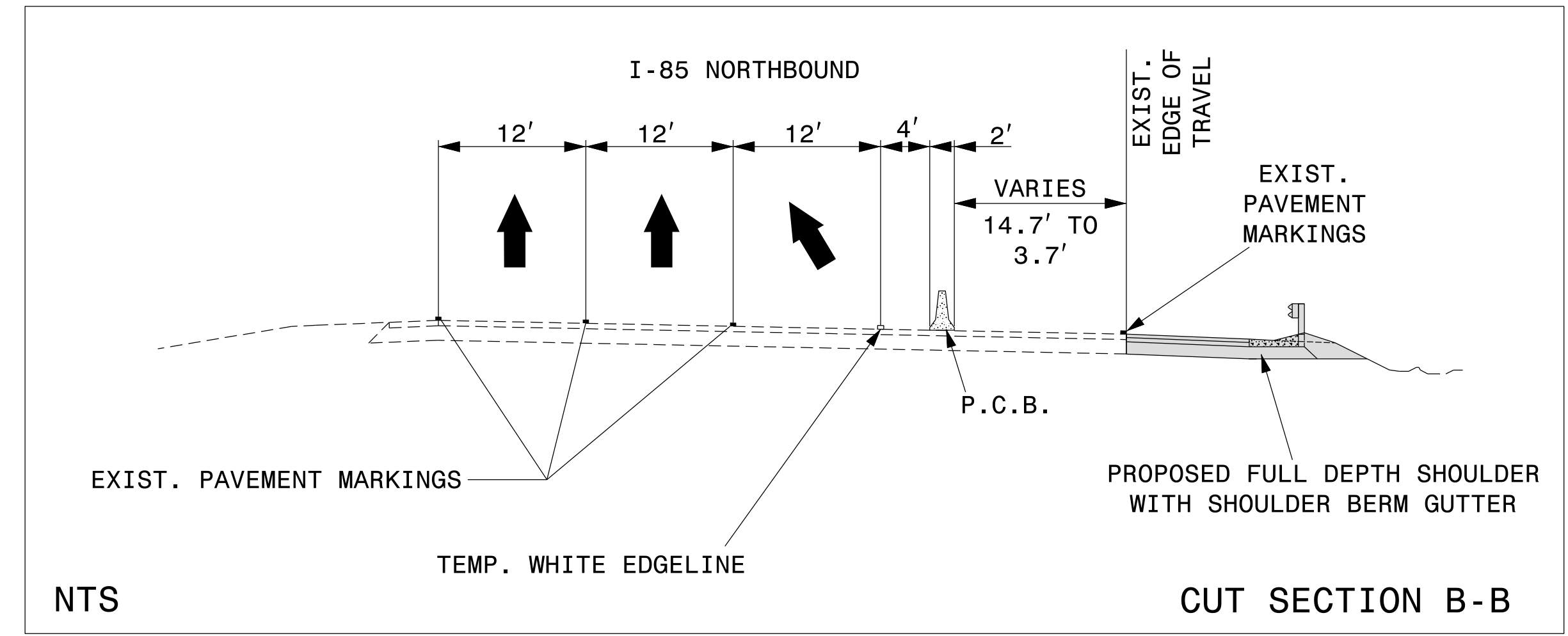
PERFORM WORK SHOWN THIS SHEET JUST PRIOR TO I-85 MILLING AND PAVING OPERATION. RESTORE PAVEMENT MARKINGS TO EXISTING PATTERN IN COORDINATION WITH PLACEMENT OF I-85 PAVEMENT MARKINGS.



MATCHLINE - SEE SHEET TMP-15

MATCHLINE - SEE SHEET TMP-17

TEMPORARY PAVEMENT MARKING		
P20	WHITE EDGELINE	PAINT (6")
P50	WHITE GORELINE	PAINT (12")
PAVEMENT MARKING SYMBOLS AND CHARACTERS		
P79	PAINT MERGE ARROW	PAINT



29-JUN-2022 08:21 P:\50152556\CAD\Civil\Plans\200_025_15950_TC_TCP_16.dgn jwiles AT 890K8AV4



2610 WYCLIFF ROAD
SUITE 410
RALEIGH, NC 27607
PHONE: 919.881.9939
NC COA No. F-0929

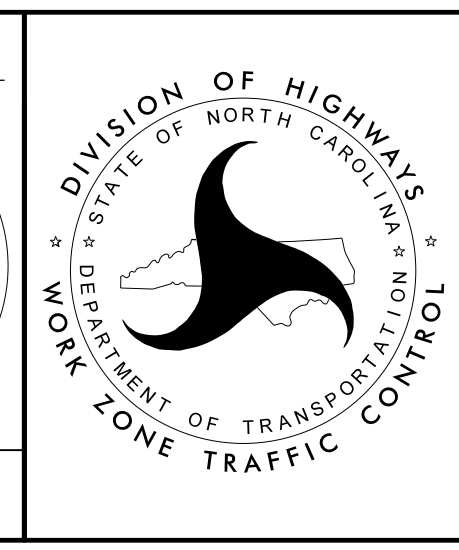
APPROVED: *[Signature]*

DATE: 6/29/2022

SEAL

NORTH CAROLINA PROFESSIONAL ENGINEER SEAL 17586 J. TODD BROOKS

DOCUMENT NOT CONSIDERED FINAL UNLESS ALL SIGNATURES COMPLETED



FULL DEPTH SHOULDER WITH SHOULDER BERM GUTTER
NB M.P. 91.52 TO 91.69