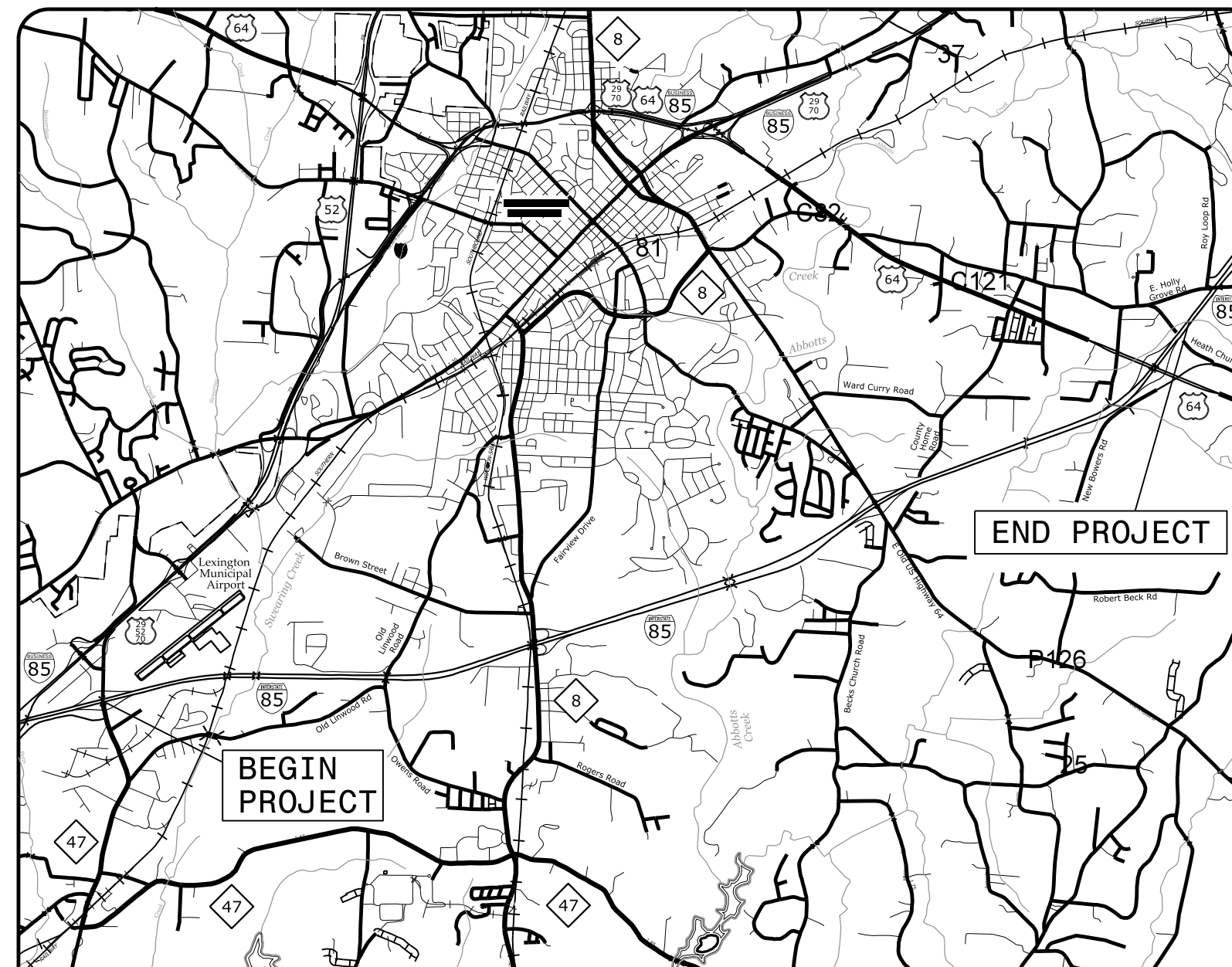
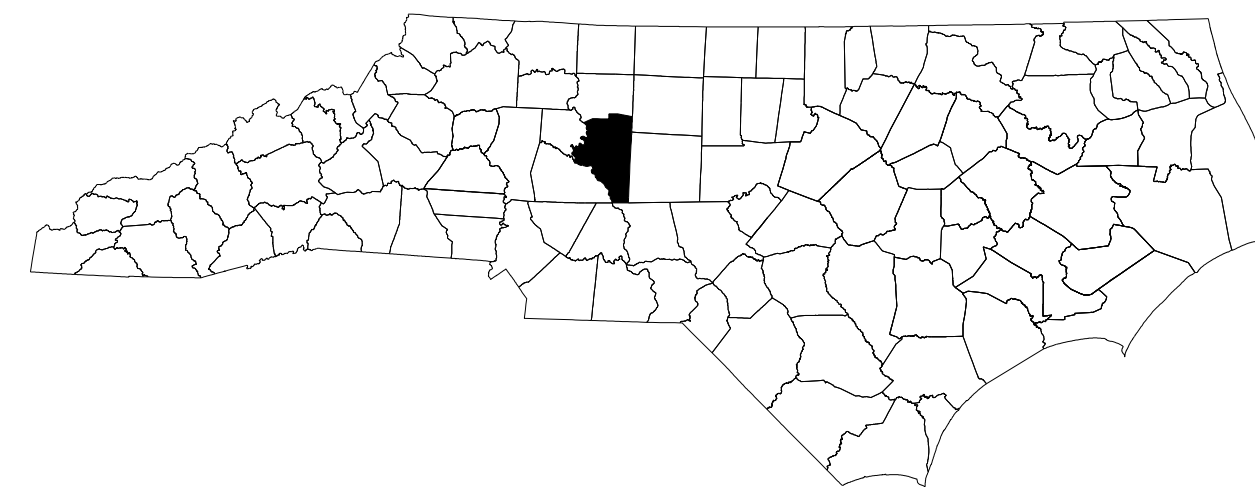


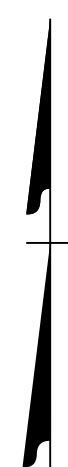
STATE OF NORTH CAROLINA
DIVISION OF HIGHWAYS

TRANSPORTATION MANAGEMENT PLAN

DAVIDSON COUNTY



VICINITY MAP

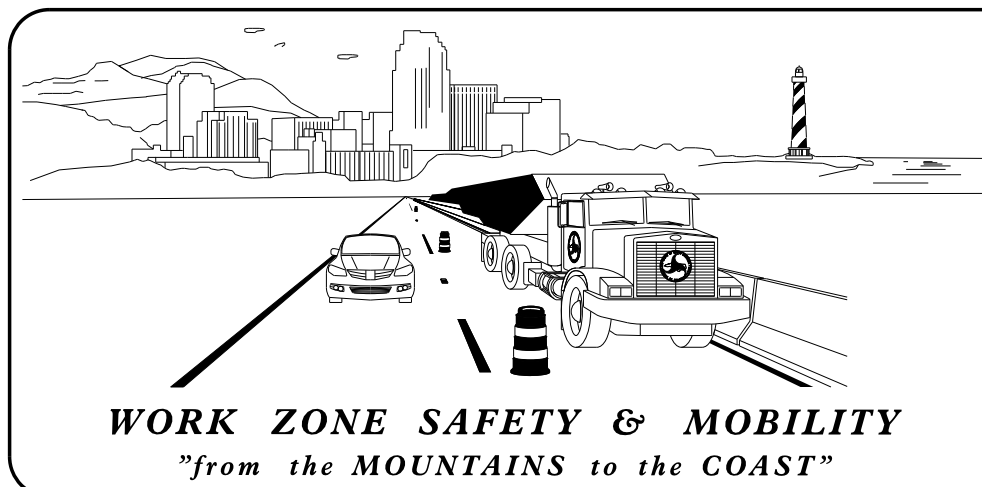


INDEX OF SHEETS

SHEET NO.	TITLE
TMP-1	TITLE SHEET, VICINITY MAP, AND INDEX OF SHEETS
TMP-1A	LIST OF APPLICABLE ROADWAY STANDARD DRAWINGS AND LEGEND
TMP-1B	TEMPORARY LANE CLOSURES - DIVIDED MULTI-LANE ROADWAY - 1 LANE CLOSED
TMP-1C	TEMPORARY LANE CLOSURES - DIVIDED MULTI-LANE ROADWAYS - 2 LANES CLOSED
TMP-2 THRU TMP-2B	TRANSPORTATION OPERATIONS PLAN: (MANAGEMENT STRATEGIES AND GENERAL NOTES)
TMP-3 THRU TMP-3B	TEMPORARY TRAFFIC CONTROL PHASING
TMP-4 THRU TMP-6	PROJECT OVERVIEW SHEETS
TMP-7 THRU TMP-8	DETAIL SHEETS FOR REGRADING I-85 SB SHOULDER AT NC 47
TMP-9 THRU TMP-11	DETAIL SHEETS FOR THE THREE SLAB REPLACEMENTS NEAR M.P. 88.31
TMP-12	DETAIL SHEET FOR CONSTRUCTION OF FULL DEPTH SHOULDER WITH SHOULDER BERM GUTTER SB M.P. 89.29 TO 89.24 & SB M.P. 89.18 TO 89.12
TMP-13 THRU TMP-13D	NC 8 DETAIL SHEETS
TMP-14 THRU TMP-17	DETAIL SHEETS FOR CONSTRUCTION OF FULL DEPTH SHOULDER WITH SHOULDER BERM GUTTER NB M.P. 91.52 TO 91.69
TMP-18	DETAIL SHEET FOR SLAB REPLACEMENT NEAR M.P. 92.54
TMP-19 THRU TMP-25	DETAIL SHEETS FOR THE THREE SLAB REPLACEMENTS NEAR M.P. 96.11
TMP-26 THRU TMP-34	DETOUR ROUTES

SHEET NO.
TMP-1

22-JUL-2022 07:23
PA 50152556 CAD\Civil\Plans\200_001_15950_TC_TCP 01.dgn
wiles AT 190K8AV4



PLANS PREPARED BY:

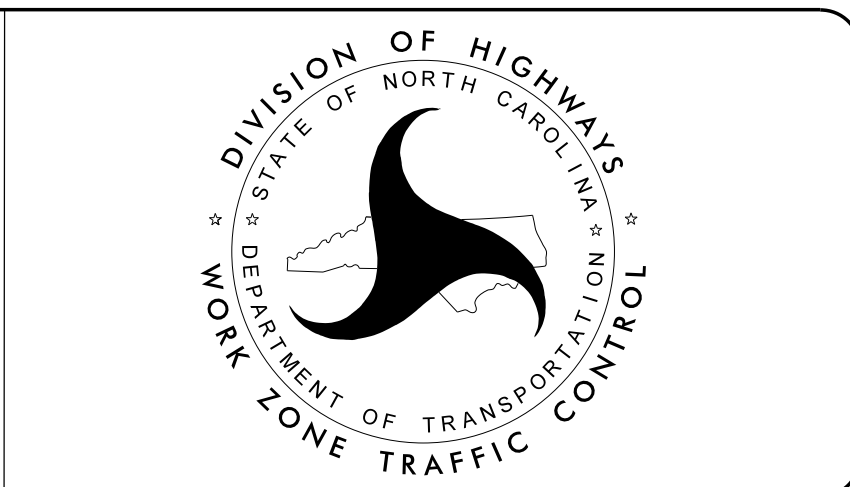
TODD BROOKS, PE
PROJECT ENGINEER

ABRAHAM WILES
PROJECT DESIGN ENGINEER

NCDOT CONTACTS:

KEN THORNEWELL JR, PE
PROJECT ENGINEER

JUSTIN BEAVER, PE
PROJECT DESIGN ENGINEER



PLAN PREPARED FOR N.C.D.O.T. BY:

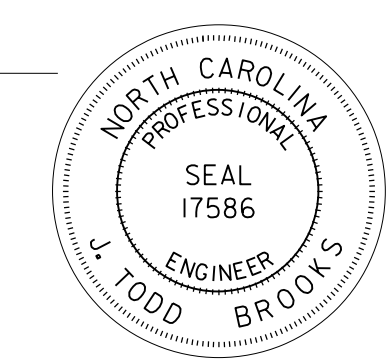
Dewberry

2610 WYCLIFF ROAD
SUITE 410
RALEIGH, NC 27607
PHONE: 919.881.9939
NC COA No. F-0929

DOCUMENT NOT CONSIDERED FINAL
UNLESS ALL SIGNATURES COMPLETED

APPROVED: *[Signature]*
B136C648C96B4EA

DATE: 7/22/2022



SEAL

TIP PROJECT: I-5950