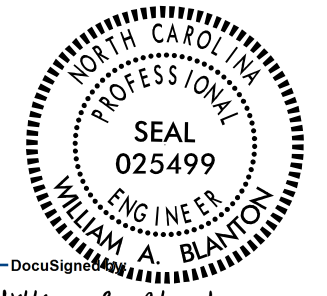
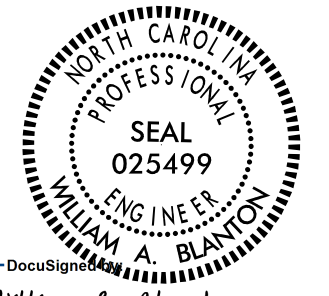
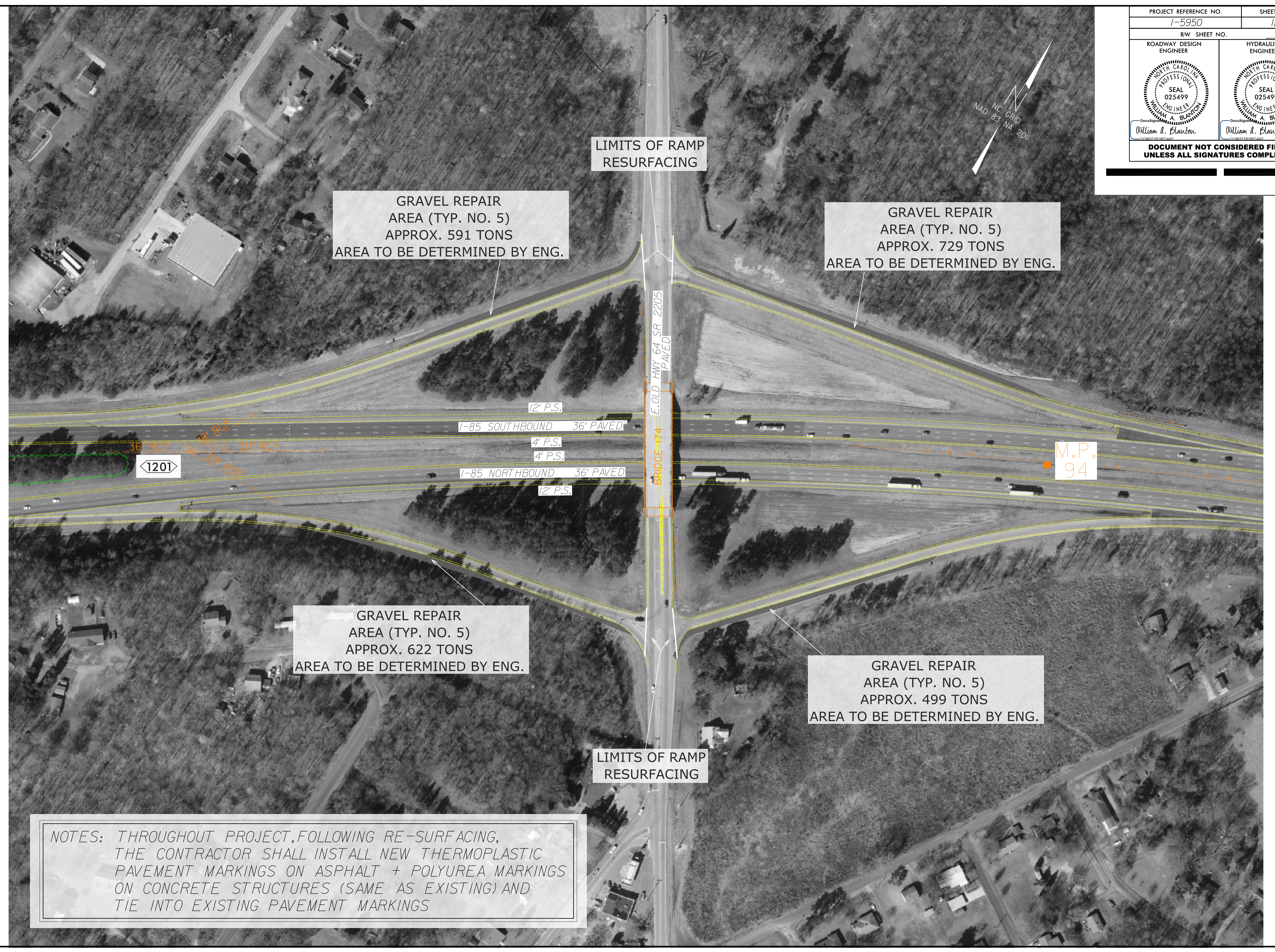


PROJECT REFERENCE NO. 1-5950	SHEET NO. 12
RW SHEET NO.	
ROADWAY DESIGN ENGINEER	HYDRAULICS ENGINEER
	
DocuSign William A. Blanton CC68371818E6F443	DocuSign William A. Blanton CC68371818E6F443
DOCUMENT NOT CONSIDERED FINAL UNLESS ALL SIGNATURES COMPLETED	



GRAVEL REPAIR
AREA (TYP. NO. 5)
APPROX. 591 TONS
AREA TO BE DETERMINED BY ENG.

GRAVEL REPAIR
AREA (TYP. NO. 5)
APPROX. 729 TONS
AREA TO BE DETERMINED BY ENG.

GRAVEL REPAIR
AREA (TYP. NO. 5)
APPROX. 622 TONS
AREA TO BE DETERMINED BY ENG.

GRAVEL REPAIR
AREA (TYP. NO. 5)
APPROX. 499 TONS
AREA TO BE DETERMINED BY ENG.

LIMITS OF RAMP
RESURFACING

LIMITS OF RAMP
RESURFACING

NOTES: THROUGHOUT PROJECT, FOLLOWING RE-SURFACING,
THE CONTRACTOR SHALL INSTALL NEW THERMOPLASTIC
PAVEMENT MARKINGS ON ASPHALT + POLYUREA MARKINGS
ON CONCRETE STRUCTURES (SAME AS EXISTING) AND
TIE INTO EXISTING PAVEMENT MARKINGS

REVISIONS

8/17/99
28-JUN-2022 15:59
S:\Project\Development\TIP-Projects\1-5950-85-Davidson\Roadway\1-5950-ddc.psh\2.dgn
S:\Project\Development\TIP-Projects\1-5950-85-Davidson\Roadway\1-5950-ddc.psh\2.dgn