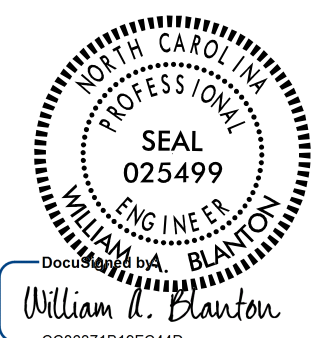

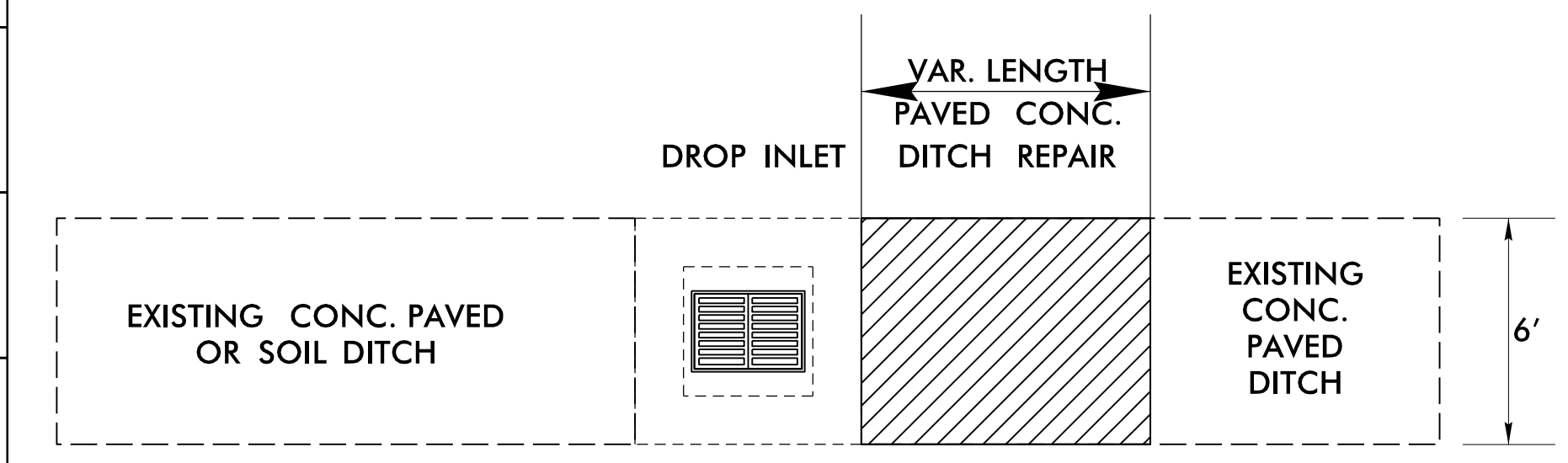


PAVEMENT SCHEDULE

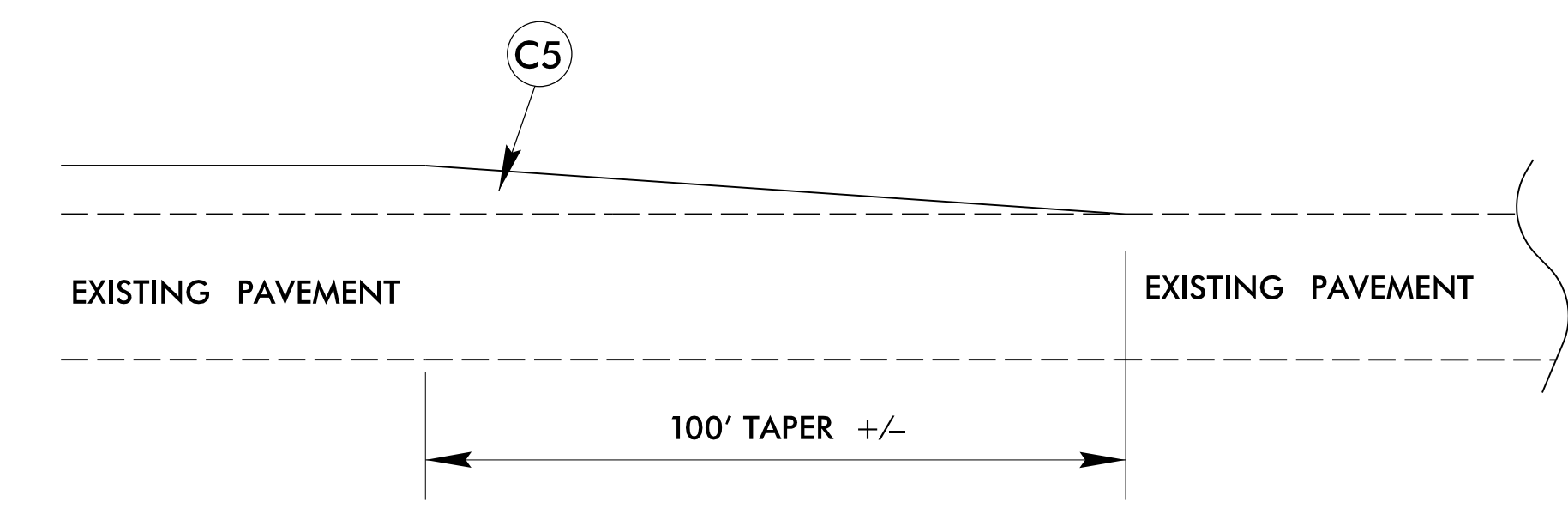
C1	PROP. APPROX. 5/8" ULTRATHIN HOT MIX BONDED WEARING SURFACE COURSE, TYPE B, AT AN AVERAGE RATE OF 70 LBS. PER SQ. YD.	Q	8" INCIDENTAL STONE BASE
C2	PROP. APPROX. 2" ASPHALT CONCRETE SURFACE COURSE, TYPE S9.5D, AT AN AVERAGE RATE OF 224 LBS. PER SQ. YD.	R1	SHOULDER BERM GUTTER
C3	PROP. APPROX. 3" ASPHALT CONCRETE SURFACE COURSE, TYPE S9.5C, AT AN AVERAGE RATE OF 168 LBS. PER SQ. YD. IN EACH OF TWO LAYERS.	R2	EXISTING 2'-6" CONCRETE CURB AND GUTTER
C4	PROP. APPROX. 1.5" ASPHALT CONCRETE SURFACE COURSE, TYPE S9.5C, AT AN AVERAGE RATE OF 168 LBS. PER SQ. YD.	R3	VAR. DEPTH REPAIR OF JOINTED CONCRETE PAVEMENT SLABS (MATCH DEPTH TO ADJACENT PAVEMENT)
C5	PROP. VAR. DEPTH ASPHALT CONCRETE SURFACE COURSE, TYPE S9.5C, AT AN AVERAGE RATE OF 112 LBS. PER SQ. YD. PER 1" DEPTH. TO BE PLACED IN LAYERS NOT TO EXCEED 2" IN DEPTH.	T	EARTH MATERIAL
C6	PROP. APPROX. 3" ASPHALT CONCRETE SURFACE COURSE, TYPE S9.5D, AT AN AVERAGE RATE OF 168 LBS. PER SQ. YD. IN EACH OF TWO LAYERS.	U	EXISTING PAVEMENT
D1	PROP. APPROX. 4" ASPHALT CONCRETE INTERMEDIATE COURSE, TYPE I19.0C, AT AN AVERAGE RATE OF 456 LBS. PER SQ. YD.	V1	MILLING ASPHALT PAVEMENT (2" DEPTH)
E1	PROP. APPROX. 12" ASPHALT CONCRETE BASE COURSE, TYPE B25.0C, AT AN AVERAGE RATE OF 456 LBS. PER SQ. YD. IN EACH OF THREE LAYERS.	V2	MILLING ASPHALT PAVEMENT (1.5" DEPTH)
N	GEOTEXTILE FOR SOIL STABILIZATION	Y	MILLED RUMBLE STRIPS

- NOTES:
 1) PAVEMENT EDGE SLOPES ARE 1:1 UNLESS SHOWN OTHERWISE.
 2) ULTRA-THIN BONDED WEARING COURSE SHALL BE EXTENDED 6" OUTSIDE OF TRAVEL LANES.
 3) MILLED RUMBLE STRIPS REQUIRED (STANDARDS 665.01).

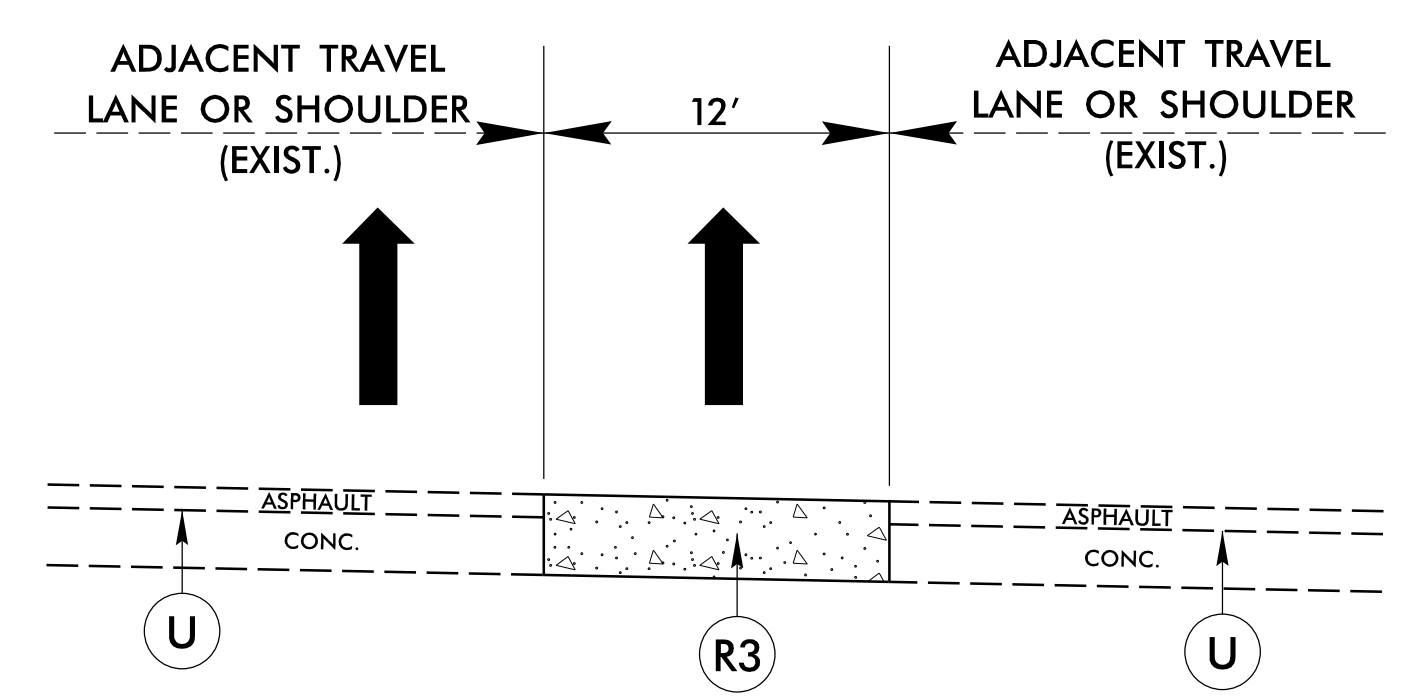
PROJECT REFERENCE NO. 1-5950	SHEET NO. 2A-3
RW SHEET NO.	
ROADWAY DESIGN ENGINEER 	PAVEMENT DESIGN ENGINEER 
DOCUMENT NOT CONSIDERED FINAL UNLESS ALL SIGNATURES COMPLETED	



DETAIL SHOWING CONC. PAVED DITCH REPAIR AT DROP INLET

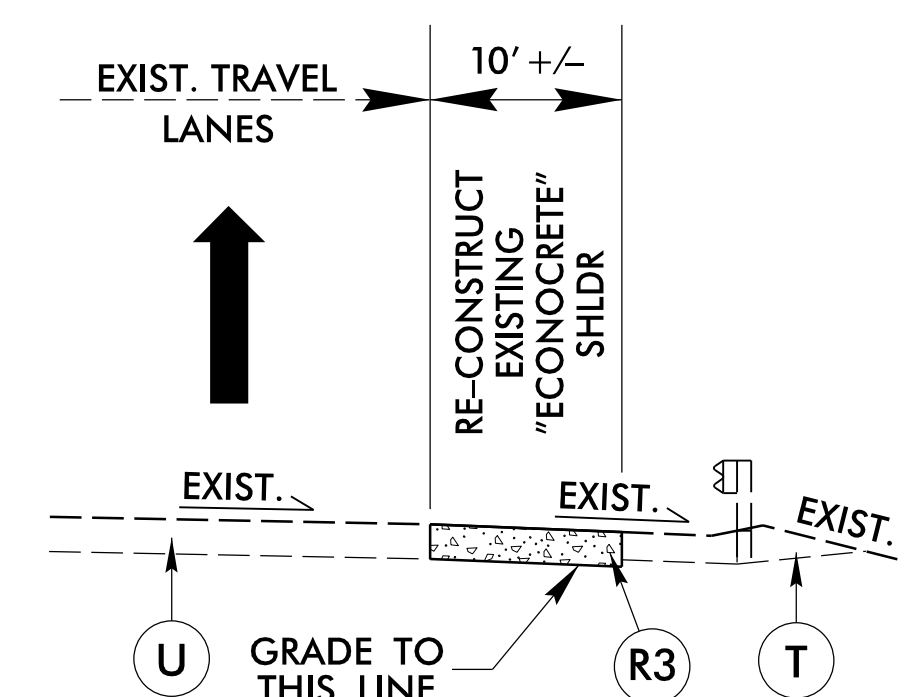


DETAIL SHOWING TEMPORARY TAPERING AND TIE-INS DURING CONSTRUCTION

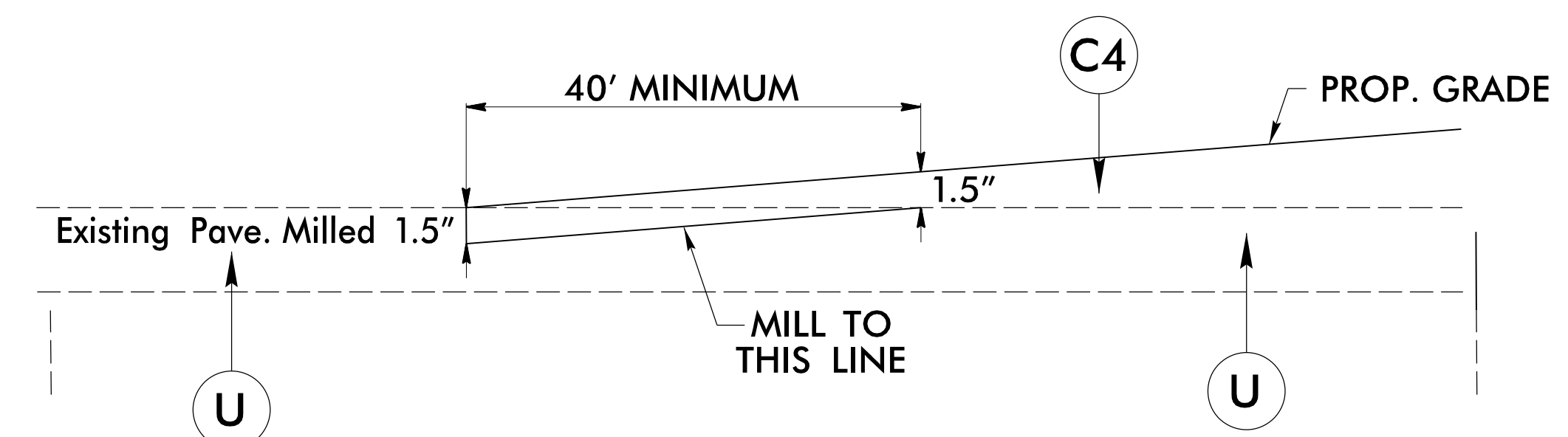


DETAIL SHOWING TRAVEL LANE SLAB REPAIR

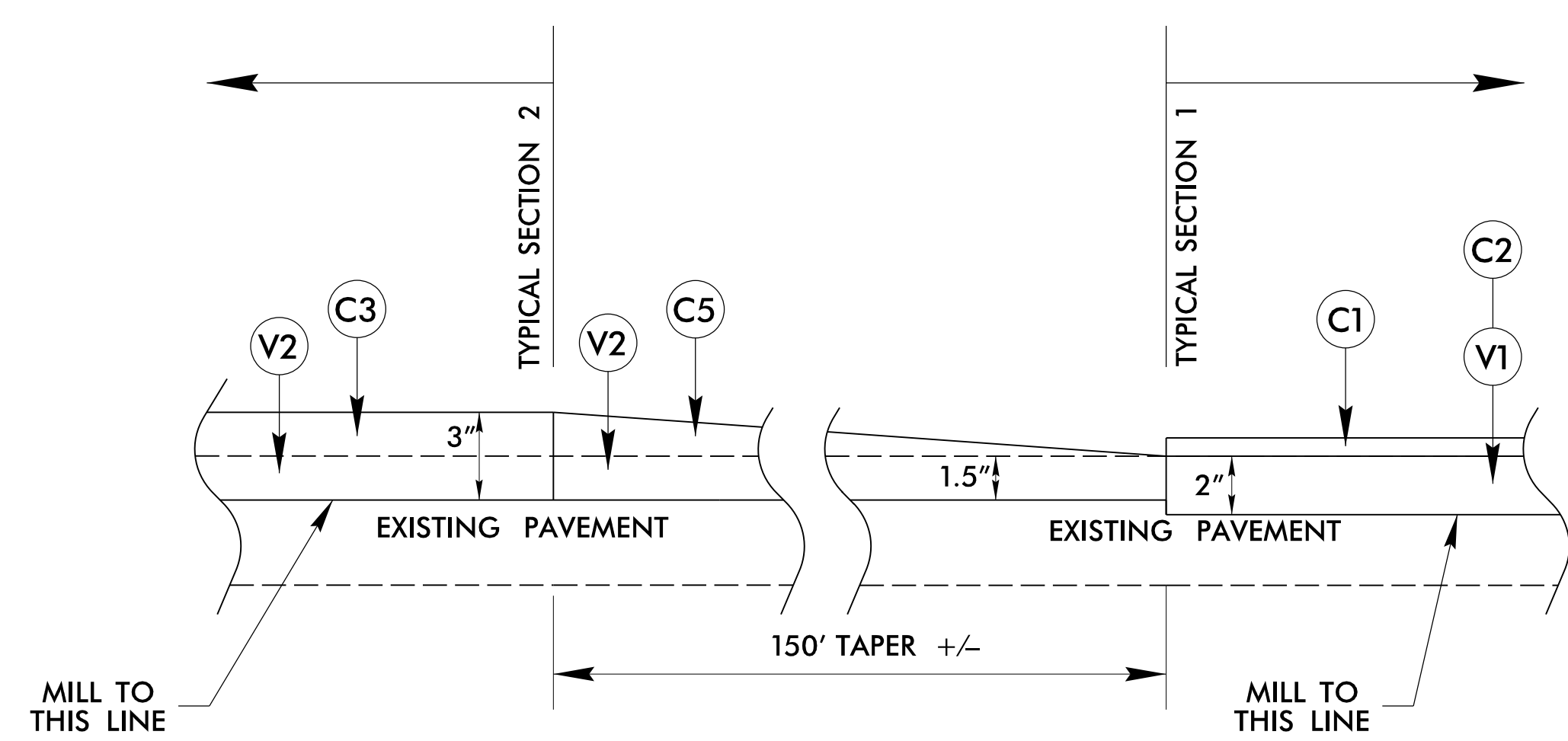
NOTE:
REPAIR SLAB PRIOR TO MILLING AND RESURFACING. CONTRACTOR IS TO MILL CONCRETE W/MILLING OF ASPHALT.



DETAIL SHOWING SHOULDER SLAB REPAIR
(SEE PSH 6, PSH 10)
*Incorporate SBG into slab replacement at Bridge #157



DETAIL FOR INCIDENTAL MILLING OF EXISTING PAVEMENT



DETAIL SHOWING TAPERING AND TIES-INS BETWEEN TYPICAL SECTIONS 1 AND 2

01-JUL-2023 15:38 185-Davidson\Roadway\1-5950-ddc-2A-typ.dgn