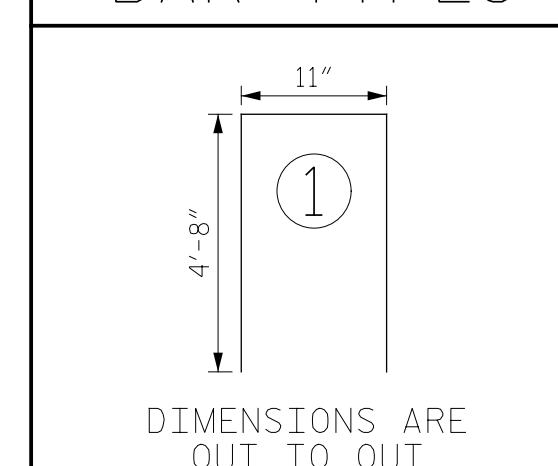


— BAR TYPES —



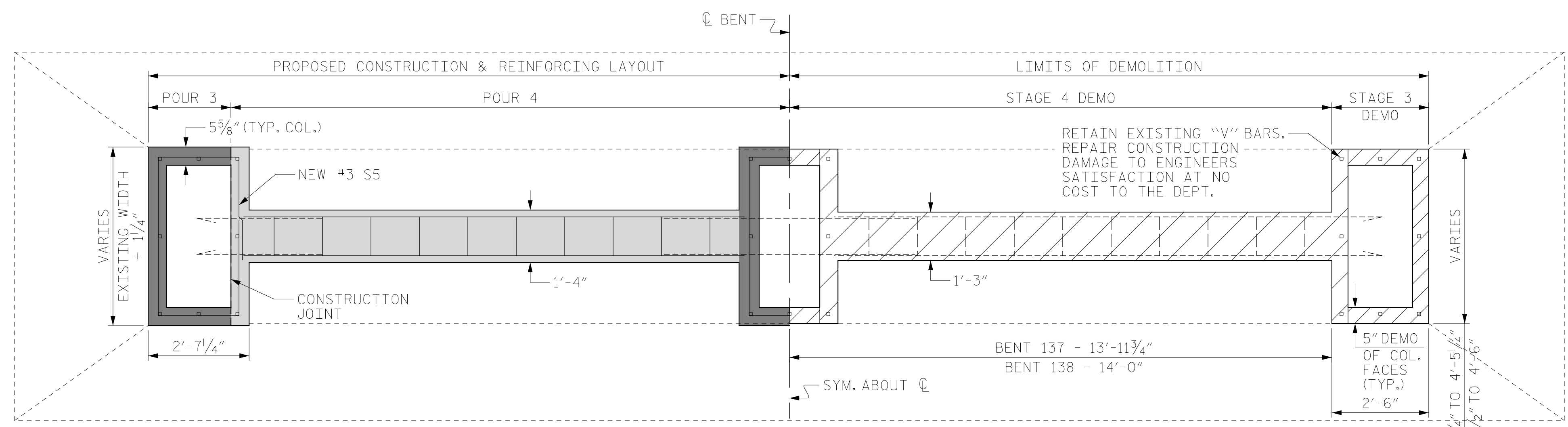
STRUT & COLUMN  
BILL OF MATERIAL

BENT 137					
BAR	NO.	SIZE	TYPE	LENGTH	WEIGHT
B1	20	#5	STR.	12'-7"	262 LBS
S5	14	#3	* STR.	13'-6"	72 LBS
S6	20	#4	1	14'-3"	105 LBS
REINFORCING STEEL				439 LBS	
CLASS AA CONCRETE				10 C.Y.	

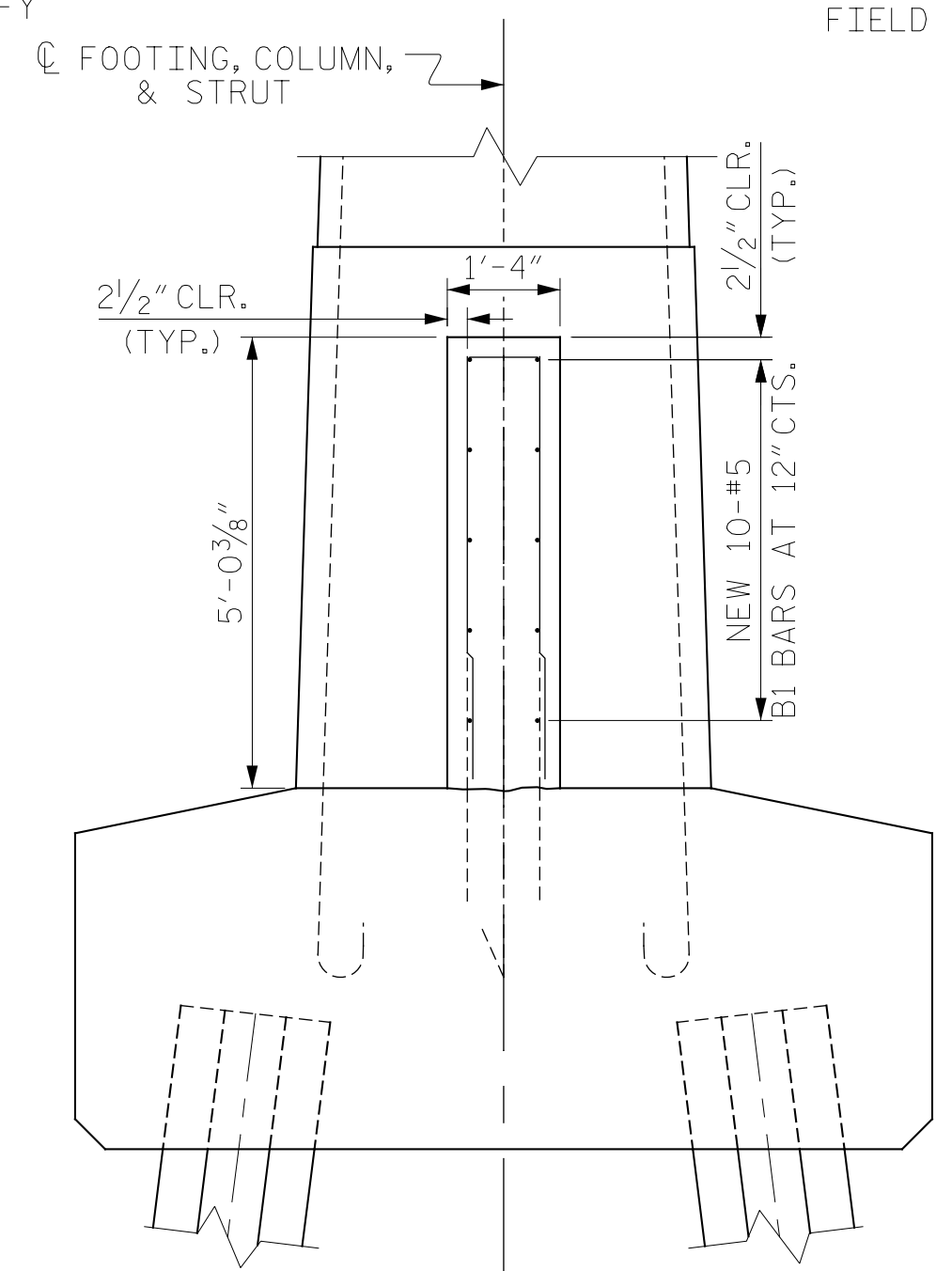
  

BENT 138					
BAR	NO.	SIZE	TYPE	LENGTH	WEIGHT
B1	20	#5	STR.	12'-7"	262 LBS
S5	14	#3	* STR.	13'-6"	72 LBS
S6	20	#4	1	14'-3"	105 LBS
REINFORCING STEEL				439 LBS	
CLASS AA CONCRETE				10 C.Y.	

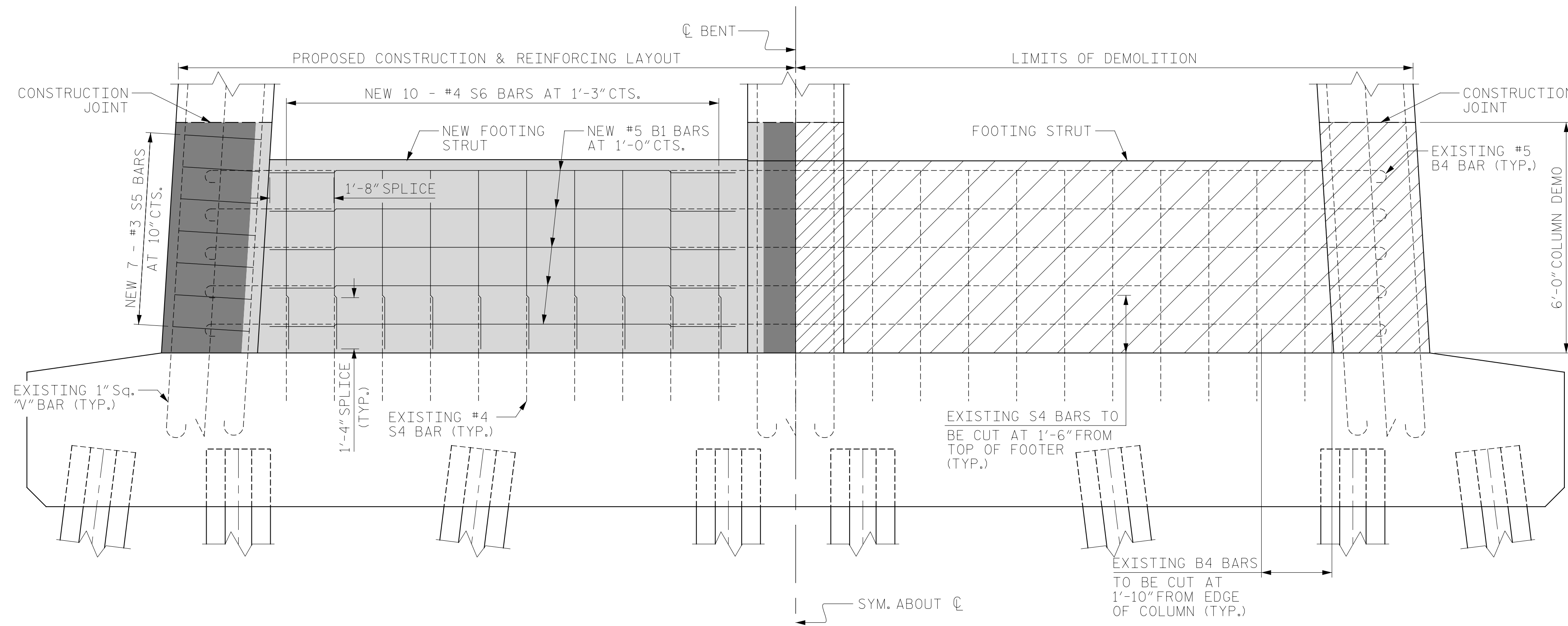
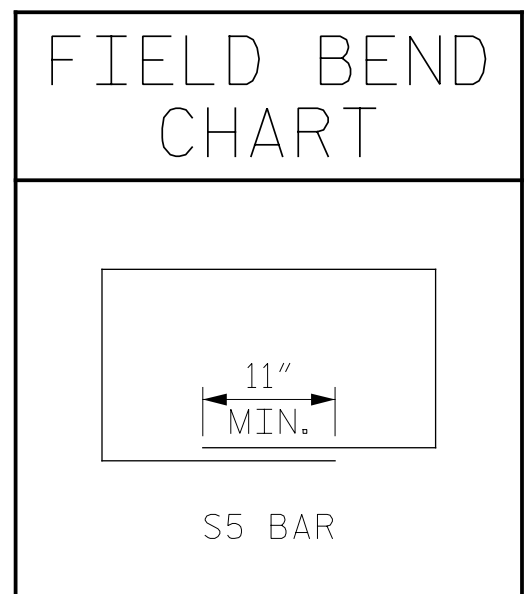
NOTES:  
\* FIELD BEND BARS BASED ON FIELD MEASUREMENTS. OVERALL LENGTH IS BASED ON ANTICIPATED MAXIMUM DIMENSIONS. SEE FINAL BEND CHART.  
FIELD CUT AS REQUIRED FOR FIT.



PLAN  
COLUMN AND STRUT RESTORATION

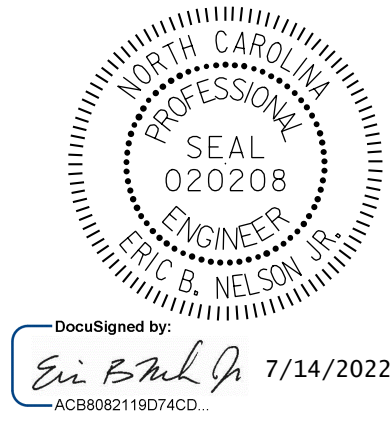


SIDE VIEW  
PROPOSED COLUMN & STRUT



ELEVATION  
COLUMN & STRUT RESTORATION

- STAGE 3 DEMOLITION
- STAGE 4 DEMOLITION
- POUR 3
- POUR 4



PROJECT NO. HB-0017  
DARE COUNTY  
BRIDGE NO. 270009

SHEET 3 OF 3  
STATE OF NORTH CAROLINA  
DEPARTMENT OF TRANSPORTATION  
RALEIGH  
PILE FOOTING  
RESTORATION  
BENT 137 AND 138

DRAWN BY: T. HARTLEY DATE: 4/2019  
CHECKED BY: R. NELSON DATE: 4/2019



DOCUMENT NOT CONSIDERED  
FINAL UNLESS ALL  
SIGNATURES COMPLETED

REVISIONS						SHEET NO.
NO.	BY:	DATE:	NO.	BY:	DATE:	S-351
1			3			TOTAL SHEETS
2			4			355