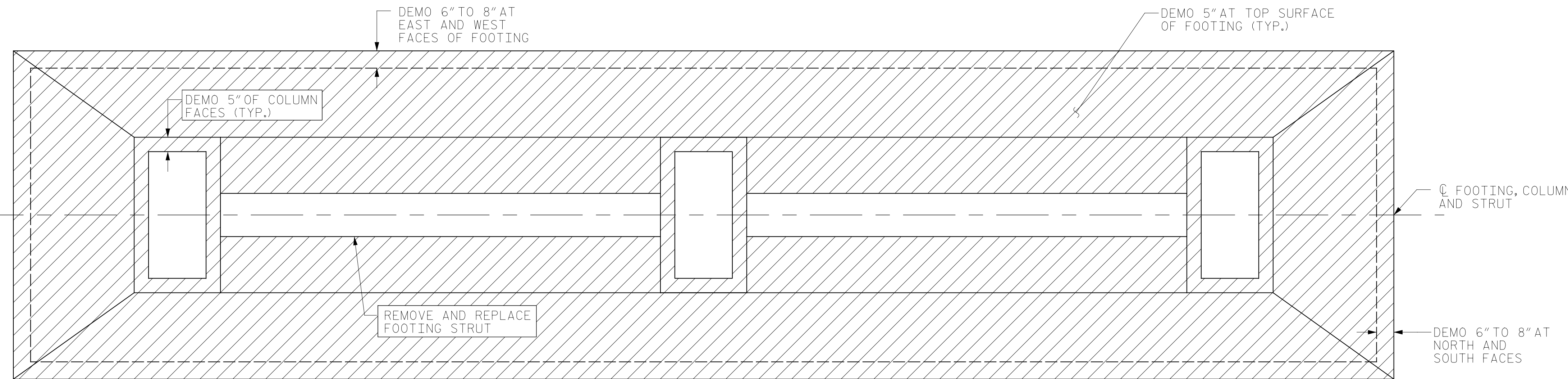
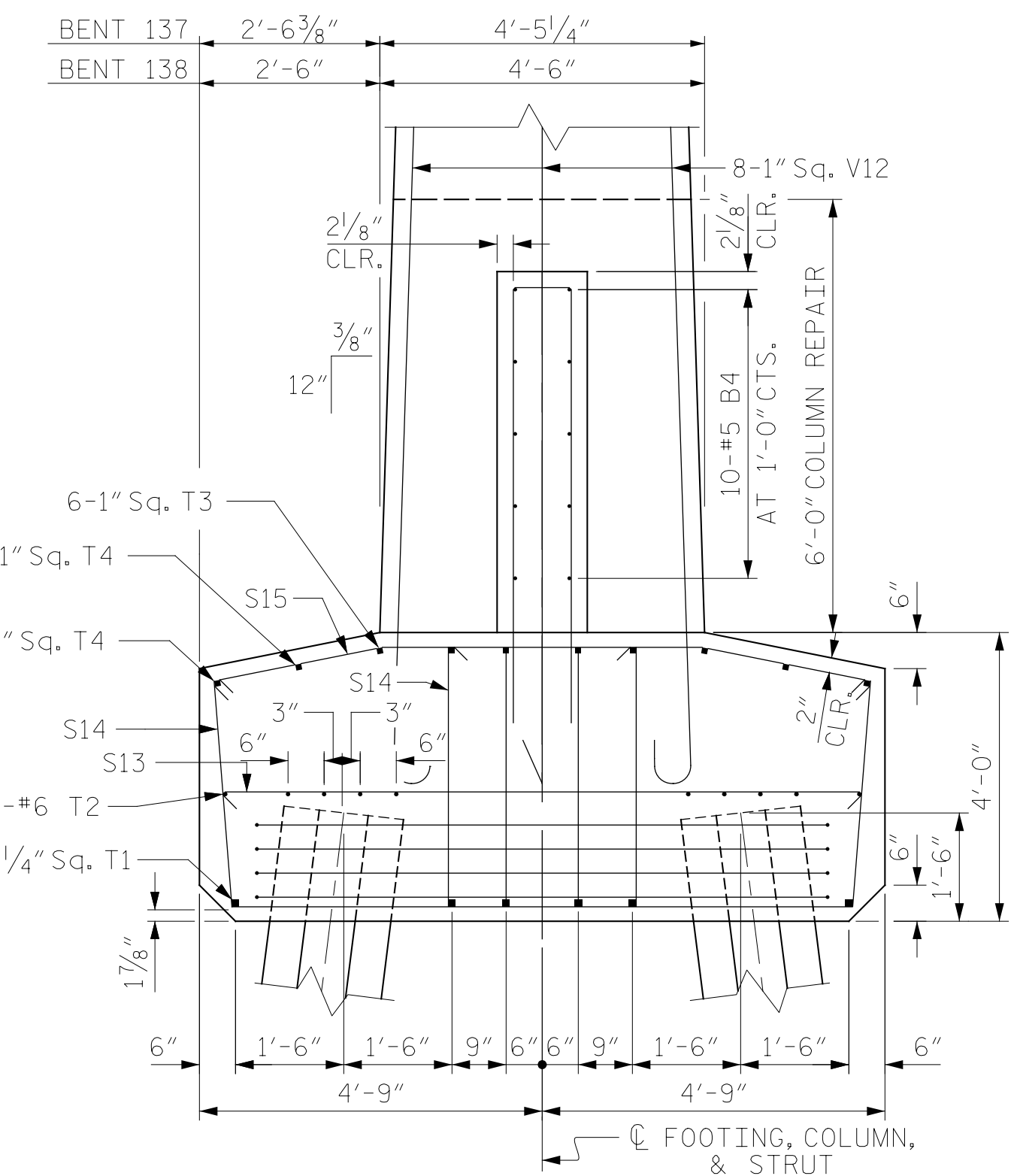


NOTES

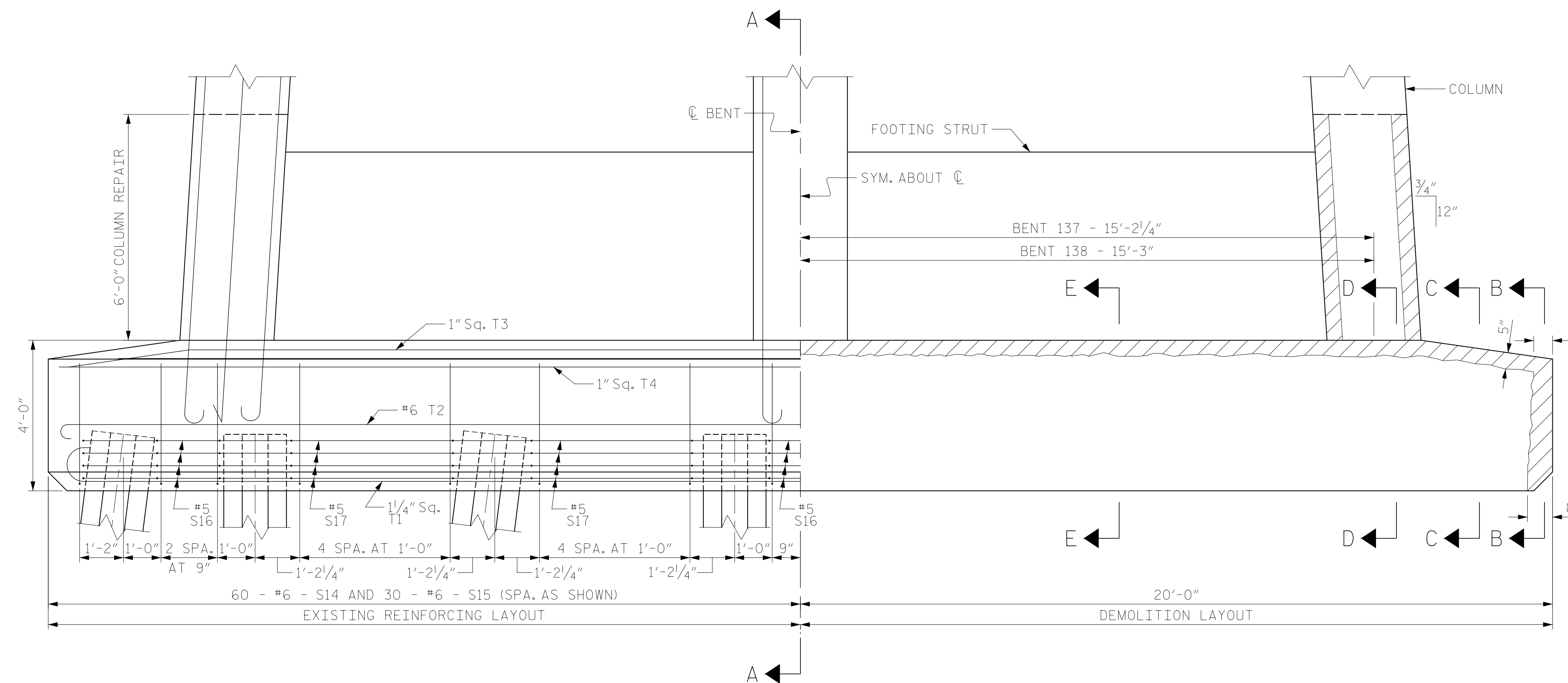
- 1.) PERFORM STAGED REMOVAL OF CONCRETE TO THE LIMITS SHOWN ON THE PROJECT DETAIL SHEETS AND PROVIDE 1" OF CLEARANCE BEHIND MAIN REINFORCING STEEL.
- 2.) EXERCISE CARE DURING CONCRETE DEMOLITION TO NOT DAMAGE THE EXISTING MAIN REINFORCING STEEL AND STIRRUP STEEL IN THE FOOTING FACES. IT IS ASSUMED THE EXISTING #6 STIRRUP EXPOSED AFTER DEMOLITION WILL HAVE SUFFICIENT BAR AREA REMAINING TO BE RETAINED AND RE-USED. THE PROPOSED #4 S1 THRU #5 S3 BARS ARE DETAILED AS SUPPLEMENTAL BARS TO BE TIED TO THE EXISTING BARS AS REQUIRED FOR SECTION LOSS REPAIR.
- 3.) BLAST CLEAN ALL EXPOSED REINFORCING STEEL. FOR MAIN REINFORCING STEEL WITH MORE THAN 20% SECTION LOSS, SPLICE AND SECURELY TIE SUPPLEMENTAL BARS AS REQUIRED. SEE THE PROJECT "TYPICAL CONCRETE REPAIR DETAILS" FOR SUPPLEMENTAL BAR SPLICING.
- 4.) FORM, POUR AND CURE CONCRETE AS SHOWN ON THE PROJECT DETAIL SHEETS AND AS DESCRIBED IN THE PROJECT SPECIAL PROVISIONS.



FOOTING PLAN VIEW  
EXISTING CONDITIONS & PROPOSED DEMOLITION



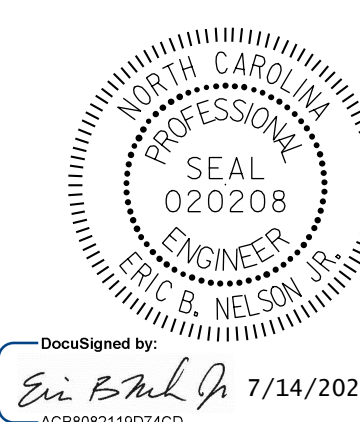
SECTION A-A  
(EXISTING REINFORCING SHOWN, SEE OTHER SECTIONS FOR DEMOLITION AND PROPOSED REINFORCING)



FOOTING ELEVATION VIEW  
SECTION TAKEN ALONG C FOOTING, COLUMN, & STRUT  
EXISTING CONDITIONS & PROPOSED DEMOLITION

PROJECT NO. HB-0017  
DARE COUNTY  
 BRIDGE NO. 270009

SHEET 1 OF 3



DocuSigned by:  
Eric B. Nelson, Jr. 7/14/2022

STATE OF NORTH CAROLINA  
 DEPARTMENT OF TRANSPORTATION  
 RALEIGH  
**PILE FOOTING RESTORATION**  
 BENT 137 AND 138

REVISIONS						SHEET NO.
NO.	BY:	DATE:	NO.	BY:	DATE:	S-349
1			3			TOTAL SHEETS
2			4			355

DRAWN BY : T. HARTLEY DATE : 4/2019  
 CHECKED BY : R. NELSON DATE : 4/2019



DOCUMENT NOT CONSIDERED  
 FINAL UNLESS ALL  
 SIGNATURES COMPLETED