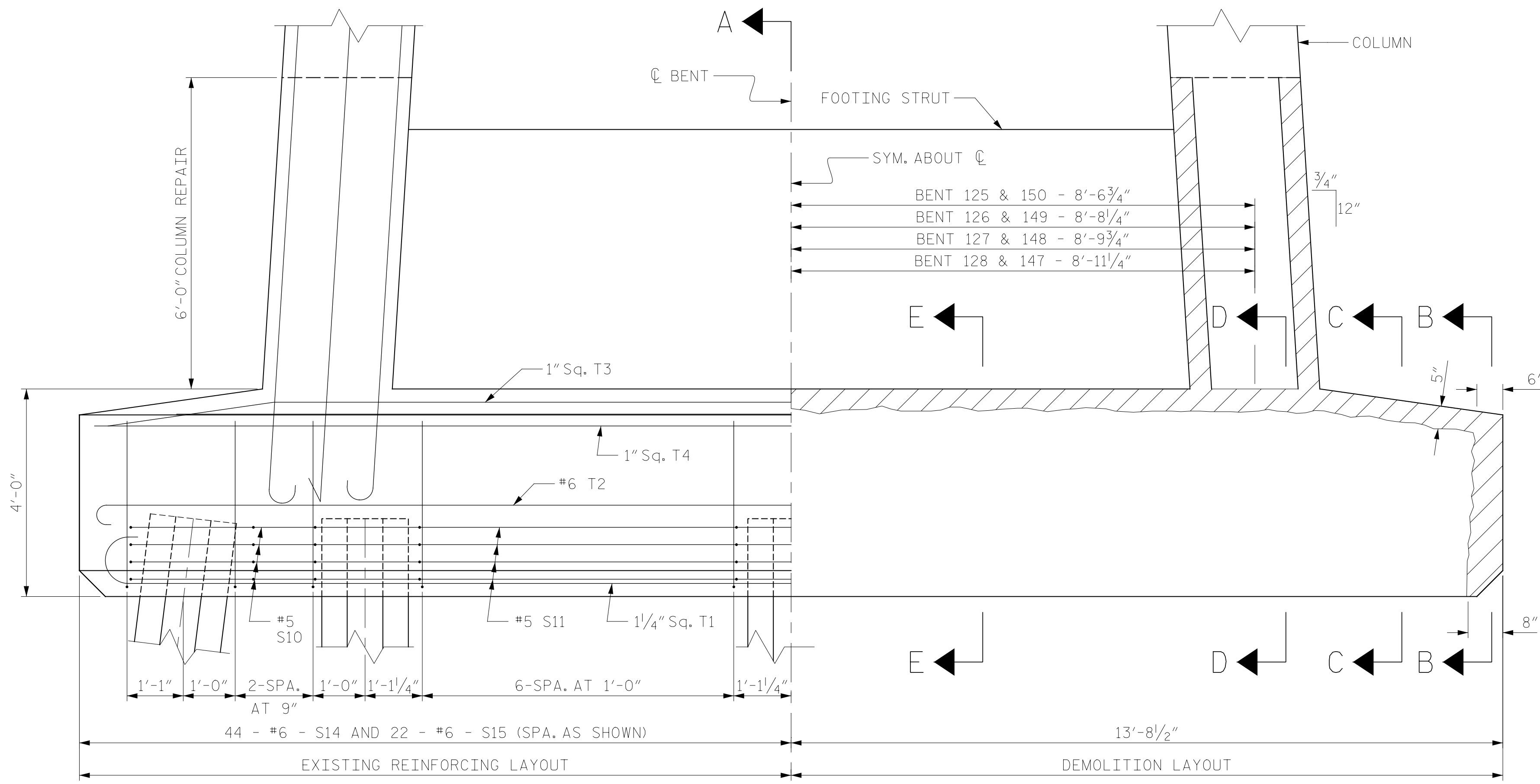
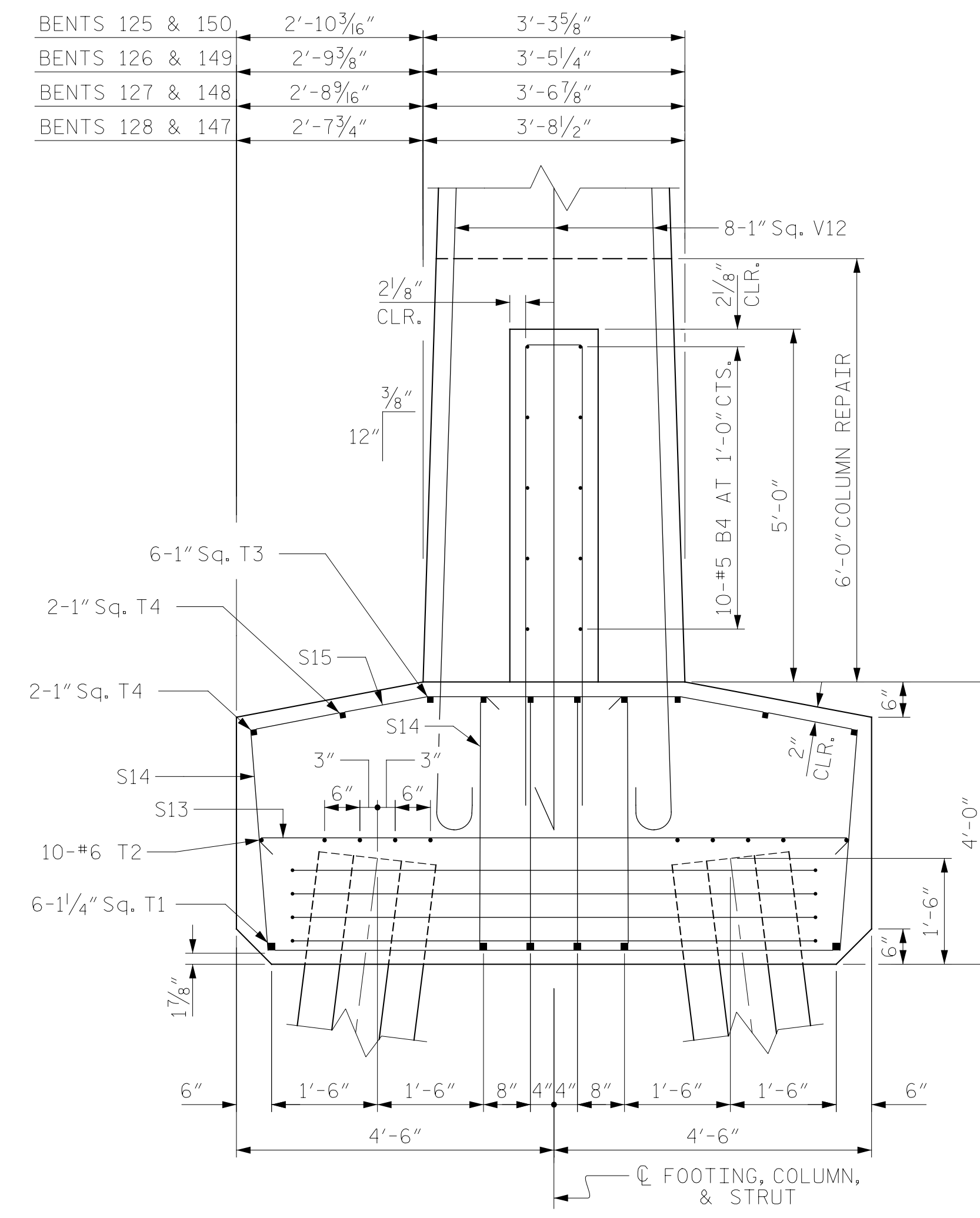


FOOTING PLAN VIEW  
EXISTING CONDITIONS & PROPOSED DEMOLITION



FOOTING ELEVATION VIEW  
SECTION TAKEN ALONG C FOOTING, COLUMN, & STRUT  
EXISTING CONDITIONS & PROPOSED DEMOLITION



SECTION A-A  
(EXISTING REINFORCING SHOWN, SEE OTHER SECTIONS FOR DEMOLITION AND PROPOSED REINFORCING)

- NOTES
- 1.) PERFORM STAGED REMOVAL OF CONCRETE TO THE LIMITS SHOWN ON THE PROJECT DETAIL SHEETS AND PROVIDE 1" OF CLEARANCE BEHIND MAIN REINFORCING STEEL.
  - 2.) EXERCISE CARE DURING CONCRETE DEMOLITION TO NOT DAMAGE THE EXISTING MAIN REINFORCING STEEL AND STIRRUP STEEL IN THE FOOTING FACES. IT IS ASSUMED THE EXISTING #6 STIRRUPS EXPOSED AFTER DEMOLITION WILL HAVE SUFFICIENT BAR AREA REMAINING TO BE RETAINED AND RE-USED. THE PROPOSED #4 S1 THRU #S3 BARS ARE DETAILED AS SUPPLEMENTAL BARS TO BE TIED TO THE EXISTING BARS AS REQUIRED FOR SECTION LOSS REPAIR.
  - 3.) BLAST CLEAN ALL EXPOSED REINFORCING STEEL. FOR MAIN REINFORCING STEEL WITH MORE THAN 20% SECTION LOSS, SPLICE AND SECURELY TIE SUPPLEMENTAL BARS AS REQUIRED. SEE THE PROJECT "TYPICAL CONCRETE REPAIR DETAILS" FOR SUPPLEMENTAL BAR SPLICING.
  - 4.) FORM, POUR AND CURE CONCRETE AS SHOWN ON THE PROJECT DETAIL SHEETS AND AS DESCRIBED IN THE PROJECT SPECIAL PROVISIONS.

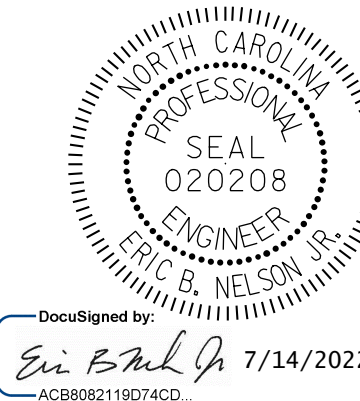
BENTS 125 & 150	2'-10 <sup>3</sup> / <sub>16</sub> "	3'-3 <sup>5</sup> / <sub>8</sub> "
BENTS 126 & 149	2'-9 <sup>3</sup> / <sub>8</sub> "	3'-5 <sup>1</sup> / <sub>4</sub> "
BENTS 127 & 148	2'-8 <sup>9</sup> / <sub>16</sub> "	3'-6 <sup>7</sup> / <sub>8</sub> "
BENTS 128 & 147	2'-7 <sup>3</sup> / <sub>4</sub> "	3'-8 <sup>1</sup> / <sub>2</sub> "

PROJECT NO. HB-0017  
DARE COUNTY  
 BRIDGE NO. 270009

SHEET 1 OF 3

STATE OF NORTH CAROLINA  
 DEPARTMENT OF TRANSPORTATION  
 RALEIGH

PILE FOOTING RESTORATION  
 BENT 125 THRU 128 AND 147 THRU 150



DRAWN BY : T. HARTLEY DATE : 4/2019  
 CHECKED BY : R. NELSON DATE : 4/2019



DOCUMENT NOT CONSIDERED FINAL UNLESS ALL SIGNATURES COMPLETED

REVISIONS						SHEET NO.
NO.	BY:	DATE:	NO.	BY:	DATE:	S-340
1			3			TOTAL SHEETS
2			4			355