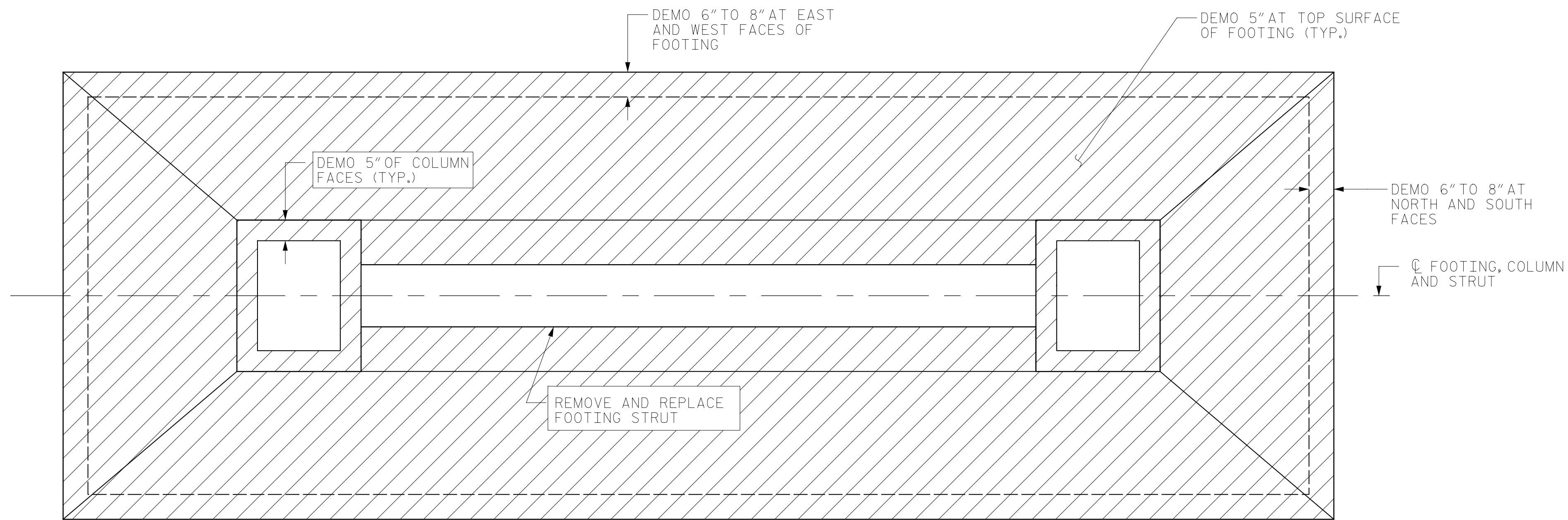
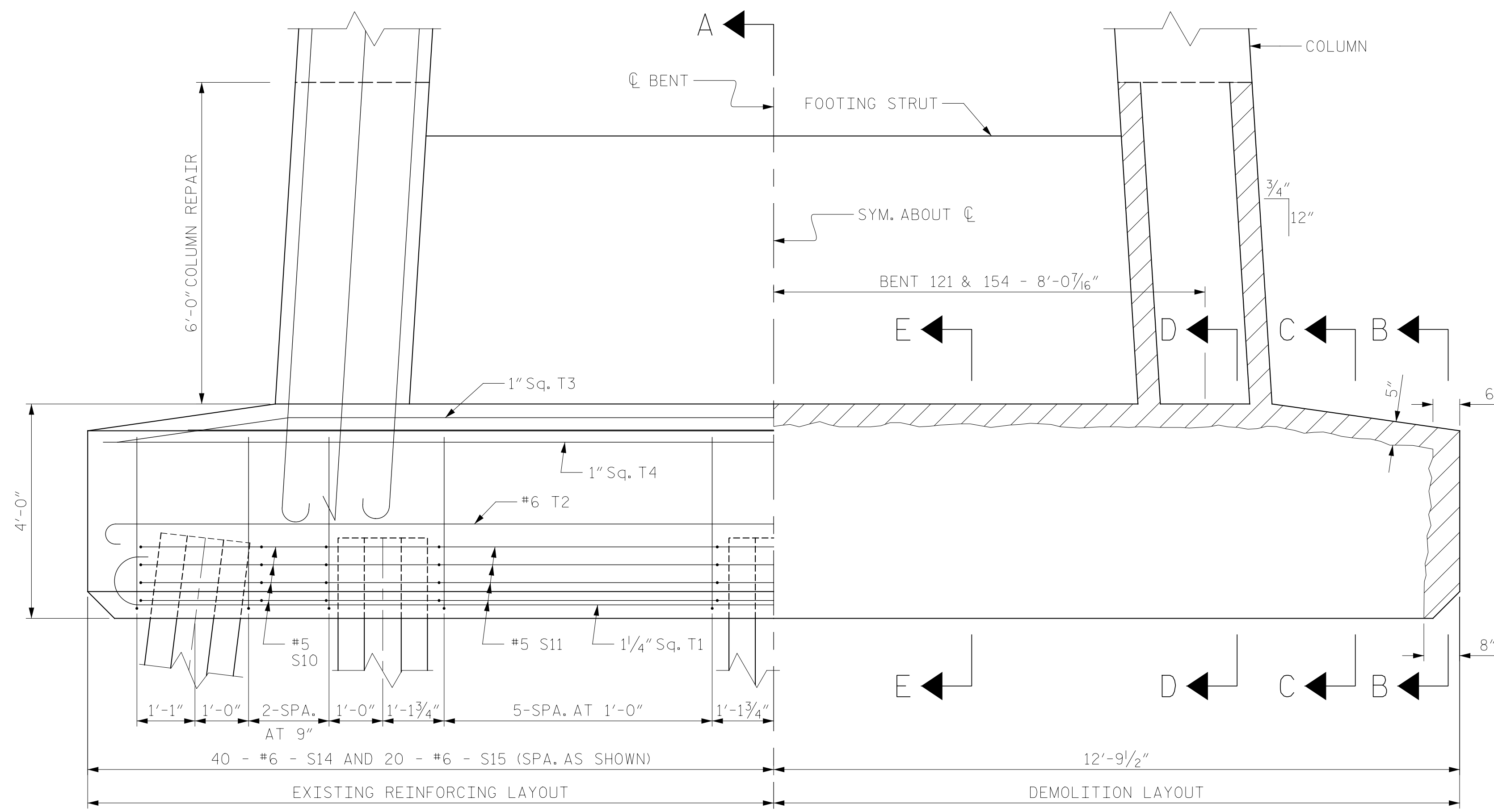


NOTES

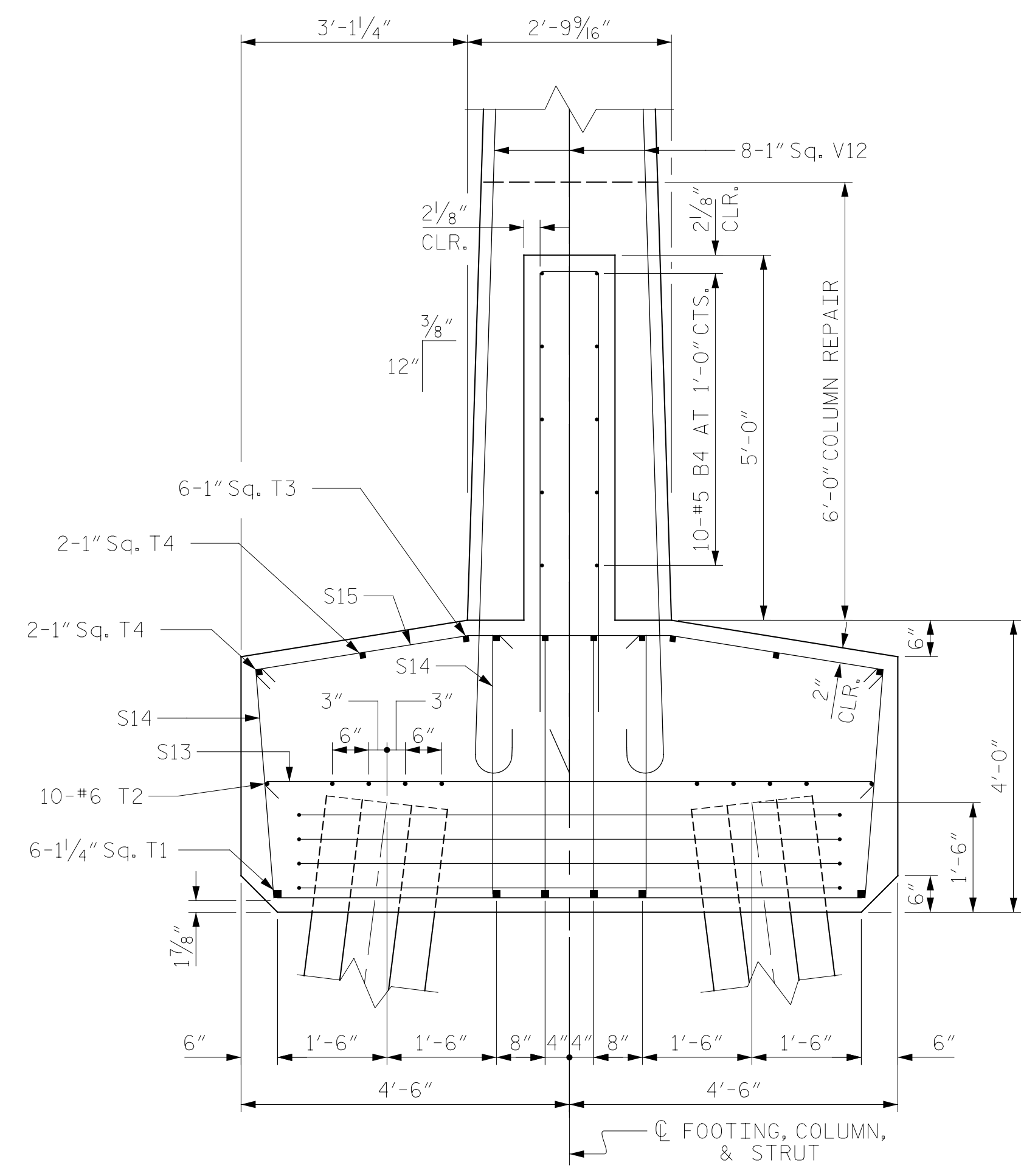
- 1.) PERFORM STAGED REMOVAL OF CONCRETE TO THE LIMITS SHOWN ON THE PROJECT DETAIL SHEETS AND PROVIDE 1" OF CLEARANCE BEHIND MAIN REINFORCING STEEL.
- 2.) EXERCISE CARE DURING CONCRETE DEMOLITION TO NOT DAMAGE THE EXISTING MAIN REINFORCING STEEL AND STIRRUP STEEL IN THE FOOTING FACES. IT IS ASSUMED THE EXISTING #6 STIRRUPS EXPOSED AFTER DEMOLITION WILL HAVE SUFFICIENT BAR AREA REMAINING TO BE RETAINED AND RE-USED. THE PROPOSED #4 S1 THRU #S3 BARS ARE DETAILED AS SUPPLEMENTAL BARS TO BE TIED TO THE EXISTING BARS AS REQUIRED FOR SECTION LOSS REPAIR.
- 3.) BLAST CLEAN ALL EXPOSED REINFORCING STEEL. FOR MAIN REINFORCING STEEL WITH MORE THAN 20% SECTION LOSS, SPLICE AND SECURELY TIE SUPPLEMENTAL BARS AS REQUIRED. SEE THE PROJECT "TYPICAL CONCRETE REPAIR DETAILS" FOR SUPPLEMENTAL BAR SPLICING.
- 4.) FORM, POUR AND CURE CONCRETE AS SHOWN ON THE PROJECT DETAIL SHEETS AND AS DESCRIBED IN THE PROJECT SPECIAL PROVISIONS.



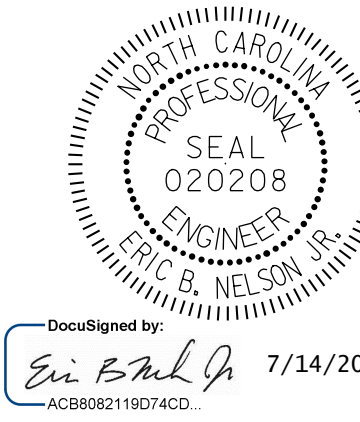
FOOTING PLAN VIEW
EXISTING CONDITIONS & PROPOSED DEMOLITION



FOOTING ELEVATION VIEW
SECTION TAKEN ALONG C.F. FOOTING, COLUMN, & STRUT
EXISTING CONDITIONS & PROPOSED DEMOLITION



SECTION A-A
(EXISTING REINFORCING SHOWN,
SEE OTHER SECTIONS FOR
DEMOLITION AND PROPOSED
REINFORCING)



PROJECT NO. HB-0017
DARE COUNTY
BRIDGE NO. 270009

SHEET 1 OF 3

STATE OF NORTH CAROLINA
DEPARTMENT OF TRANSPORTATION
RALEIGH
PILE FOOTING
RESTORATION
BENT 121 AND 154

DRAWN BY: M. LEE DATE: 4/2019
CHECKED BY: R. NELSON DATE: 4/2019



DOCUMENT NOT CONSIDERED
FINAL UNLESS ALL
SIGNATURES COMPLETED

REVISIONS						SHEET NO.
NO.	BY:	DATE:	NO.	BY:	DATE:	S-334
1			3			TOTAL SHEETS
2			4			355