

AS-BUILT REPAIR QUANTITY TABLE

BENT 195

CAP REPAIRS			
SHOTCRETE REPAIRS	10.9 SF	5.5 CF	SF CF
EPOXY RESIN INJECTION	- LF		LF
PILE REPAIRS			
PILE CONCRETE RESTORATION	78.3 SF	31.8 CF	SF CF
FRP PROTECTIVE SYSTEM AWL	254.2 SF		
FRP PROTECTIVE SYSTEM BWL	73.2 SF		

BENT 196

CAP REPAIRS			
SHOTCRETE REPAIRS	10.1 SF	5.1 CF	SF CF
EPOXY RESIN INJECTION	- LF		LF
PILE REPAIRS			
PILE CONCRETE RESTORATION	46.0 SF	18.5 CF	SF CF
FRP PROTECTIVE SYSTEM AWL	122.5 SF		
FRP PROTECTIVE SYSTEM BWL	36.6 SF		

FOR CAP REPAIRS: VALUES IN CHART REPRESENT ESTIMATED REPAIR TOTALS AFTER REMOVAL OF UNSOUND CONCRETE, MIN. OF 1" BEHIND REBAR AND MIN. 2" CL. TO SAWCUT. SEE REPAIR DETAILS.

NOTES:
REPAIR LOCATIONS AND ESTIMATE OF QUANTITIES ARE GIVEN WITH THE BEST INFORMATION AVAILABLE. IF ADDITIONAL REPAIRS NOT SHOWN ON THE DRAWINGS ARE DEEMED NECESSARY BY THE ENGINEER, THE CONTRACTOR SHALL NOTE ON THE DRAWINGS THE APPROXIMATE LOCATION AND DESCRIPTION OF THE REPAIRS AND ADJUST THE ACTUAL QUANTITIES ENTERED INTO THE REPAIR QUANTITY TABLE.

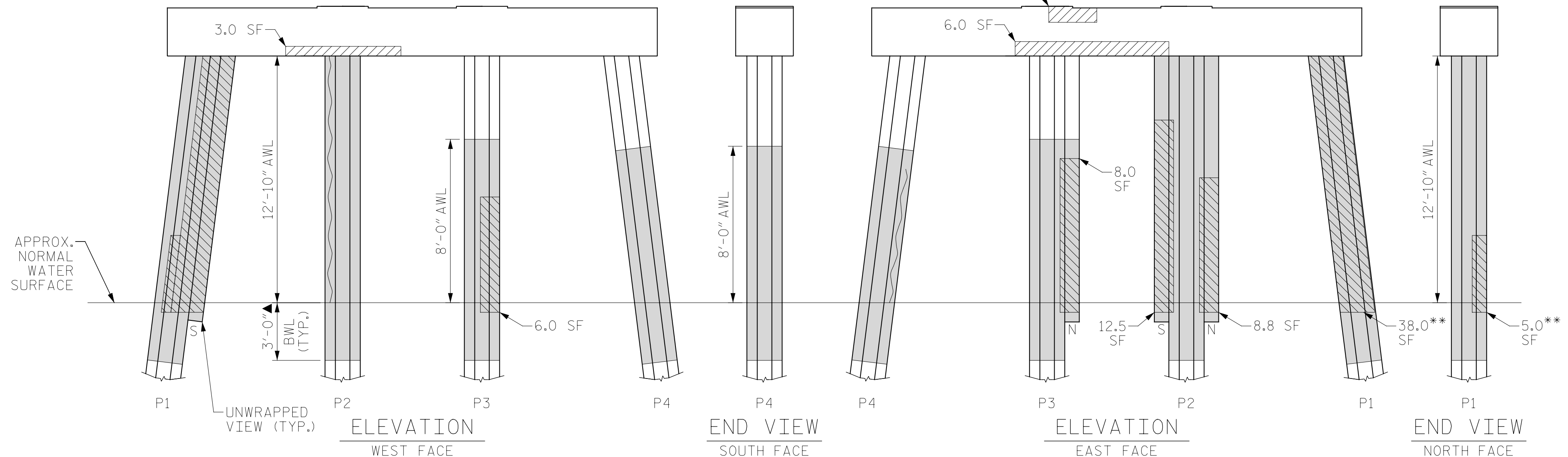
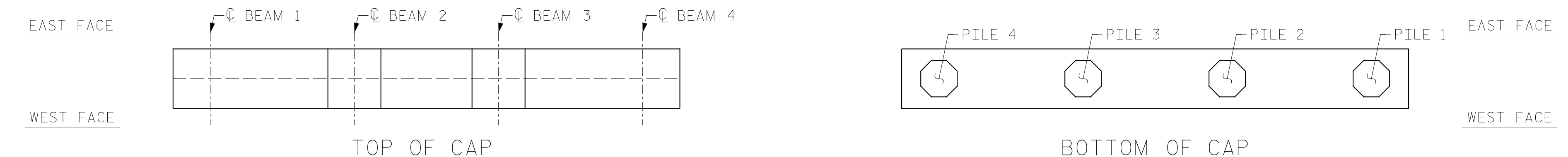
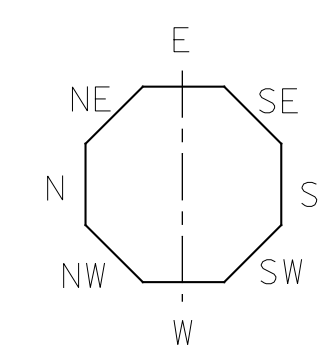
FOR SHOTCRETE REPAIRS, SEE SPECIAL PROVISIONS.
FOR CONCRETE REPAIR DETAILS, SEE "TYPICAL CAP, COLUMN & UNDERDECK REPAIR DETAILS" & "PILE CONCRETE RESTORATION DETAILS" SHEETS.
FOR PILE CONCRETE RESTORATION, SEE SPECIAL PROVISIONS.
FOR FRP PROTECTIVE SYSTEM, SEE SPECIAL PROVISIONS.
FOR FRP PROTECTIVE SYSTEM DETAILS AND UNDERWATER MORTAR REPAIRS, SEE "PILE FRP PROTECTIVE SYSTEM DETAILS" SHEET.

ESTIMATED PILE CRACK QTY. TABLE

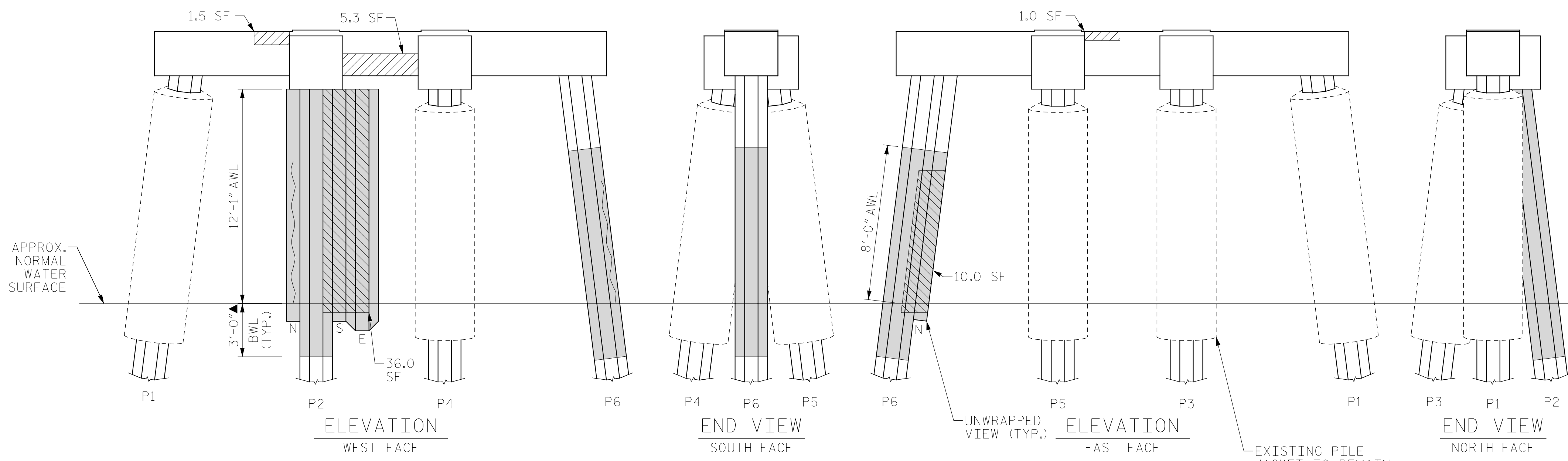
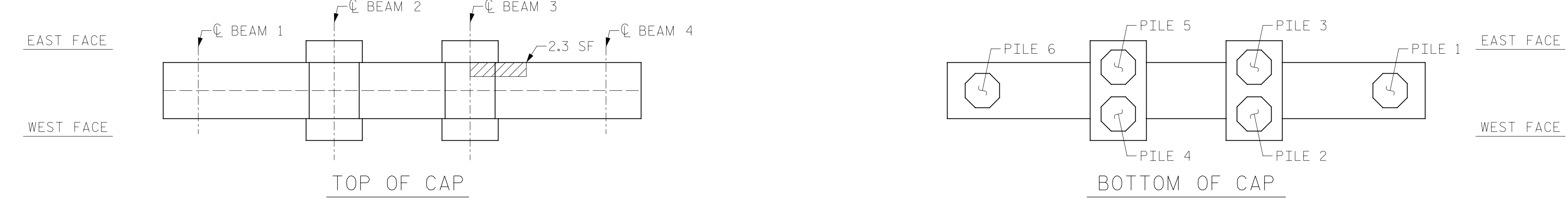
		NW	W	SW	S	SE	E	NE	N
BENT 195	PILE 1	-	-	-	-	8	6	-	3
	PILE 2	13	9	8	-	-	6	5	4
	PILE 3	3	4	2	5	-	-	7	-
	PILE 4	-	2	3	-	5	-	7	-
BENT 196	PILE 1	-	-	-	-	-	-	-	-
	PILE 2	-	8	-	-	-	-	8	8
	PILE 3	-	-	-	-	-	-	-	-
	PILE 4	-	-	-	-	-	-	-	-
	PILE 5	-	-	-	-	-	-	-	-
	PILE 6	3	-	7	4	-	4	-	-

NOTE: FOR INFORMATION ON PILE CONDITION ONLY.

PROJECT NO. HB-0017
DARE COUNTY
BRIDGE NO. 270009



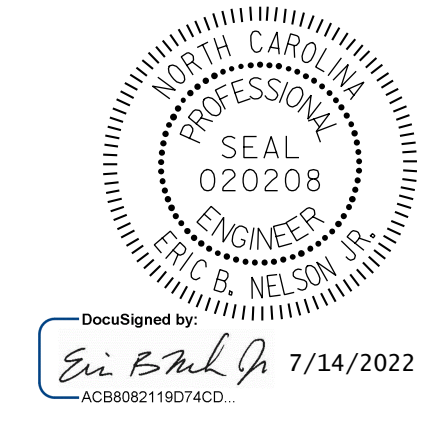
BENT 195
(AWL = ABOVE WATERLINE)
(BWL = BELOW WATERLINE)
(**QUANTITY INCLUDES ADJACENT REPAIRS)



BENT 196
(AWL = ABOVE WATERLINE)
(BWL = BELOW WATERLINE)
(**QUANTITY INCLUDES ADJACENT REPAIRS)

ERI - EPOXY RESIN INJECTION - PILE CONCRETE RESTORATION
 - FRP PROTECTIVE SYSTEM - SHOTCRETE REPAIRS

DRAWN BY: T. HARTLEY DATE: 2/2019
CHECKED BY: J. FARNHAM DATE: 4/2019



STATE OF NORTH CAROLINA
DEPARTMENT OF TRANSPORTATION
RALEIGH

BENT 195 & BENT 196

REVISIONS						SHEET NO.
NO.	BY:	DATE:	NO.	BY:	DATE:	S-267
1			3			TOTAL SHEETS
2			4			355

DOCUMENT NOT CONSIDERED FINAL UNLESS ALL SIGNATURES COMPLETED