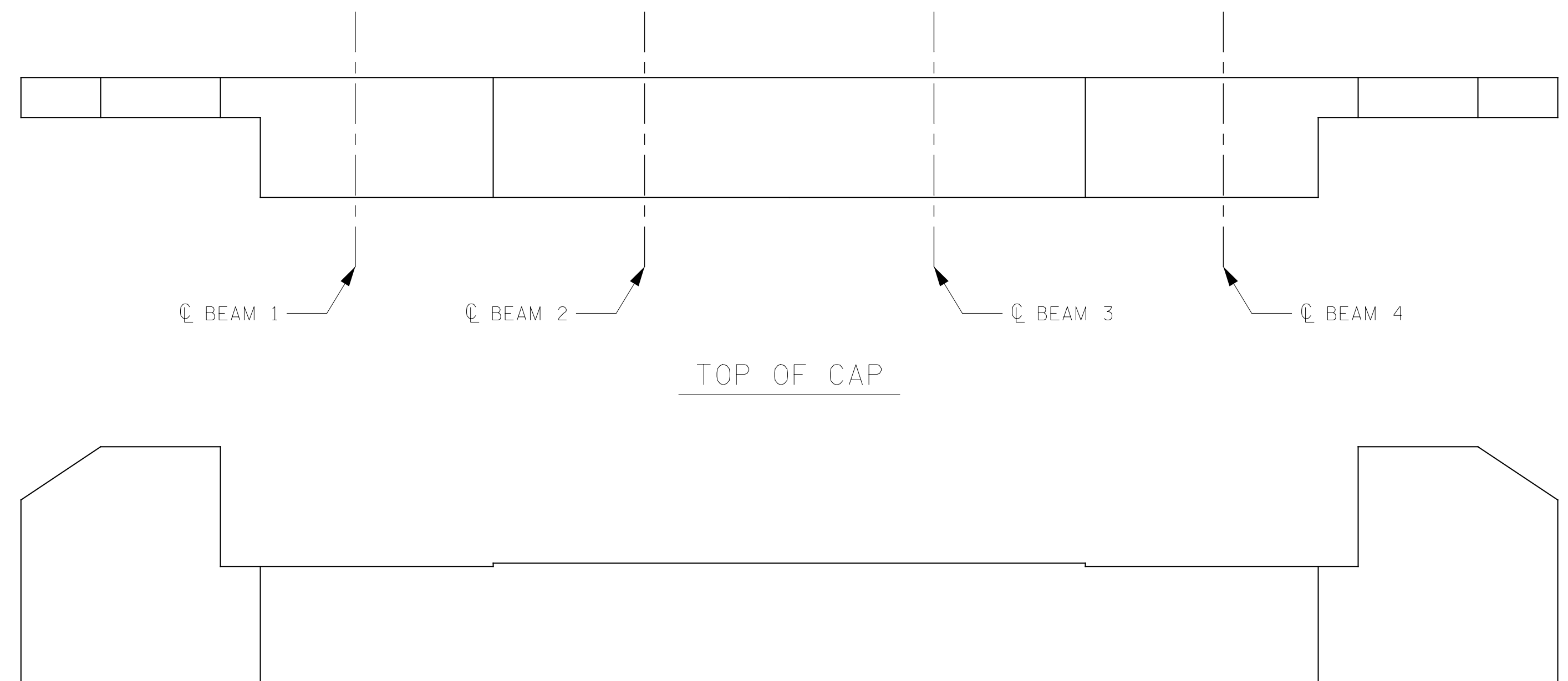


ELEVATION  
(EAST FACE)

END BENT 1

NO REPAIRS NOTED DURING INSPECTION.  
THE CONTRACTOR AND ENGINEER SHALL  
INSPECT PRIOR TO BEGINNING WORK.



ELEVATION  
(WEST FACE)

END BENT 2

AS-BUILT REPAIR QUANTITY TABLE

END BENT 1

CAP REPAIRS	ESTIMATE		ACTUAL	
	- SF	- CF	SF	CF
SHOTCRETE REPAIRS				
EPOXY RESIN INJECTION		- LF		LF

END BENT 2

CAP REPAIRS	ESTIMATE		ACTUAL	
	- SF	- CF	SF	CF
SHOTCRETE REPAIRS				
EPOXY RESIN INJECTION		- LF		LF

FOR CAP REPAIRS: VALUES IN CHART REPRESENT ESTIMATED REPAIR TOTALS AFTER REMOVAL OF UNSOUND CONCRETE, MIN. OF 1" BEHIND REBAR AND MIN. 2" CL TO SAWCUT. SEE REPAIR DETAILS.

NOTES:  
REPAIR LOCATIONS AND ESTIMATE OF QUANTITIES ARE GIVEN WITH THE BEST INFORMATION AVAILABLE. IF ADDITIONAL REPAIRS NOT SHOWN ON THE DRAWINGS ARE DEEMED NECESSARY BY THE ENGINEER, THE CONTRACTOR SHALL NOTE ON THE DRAWINGS THE APPROXIMATE LOCATION AND DESCRIPTION OF THE REPAIRS AND ADJUST THE ACTUAL QUANTITIES ENTERED INTO THE REPAIR QUANTITY TABLE.

FOR SHOTCRETE REPAIRS, SEE SPECIAL PROVISIONS.  
FOR CONCRETE REPAIR DETAILS, SEE "TYPICAL CAP, COLUMN & UNDERDECK REPAIR DETAILS" & "PILE CONCRETE RESTORATION DETAILS" SHEETS.

ERI - EPOXY RESIN INJECTION  
 - SHOTCRETE REPAIR

PROJECT NO. HB-0017  
DARE COUNTY  
 BRIDGE NO. 270009



STATE OF NORTH CAROLINA  
 DEPARTMENT OF TRANSPORTATION  
 RALEIGH  
 END BENT 1  
 &  
 END BENT 2

DRAWN BY : T. HARTLEY DATE : 3/2019  
 CHECKED BY : J. FARNHAM DATE : 4/2019



REVISIONS						SHEET NO.
NO.	BY:	DATE:	NO.	BY:	DATE:	TOTAL SHEETS
1			3			355
2			4			

DOCUMENT NOT CONSIDERED FINAL UNLESS ALL SIGNATURES COMPLETED