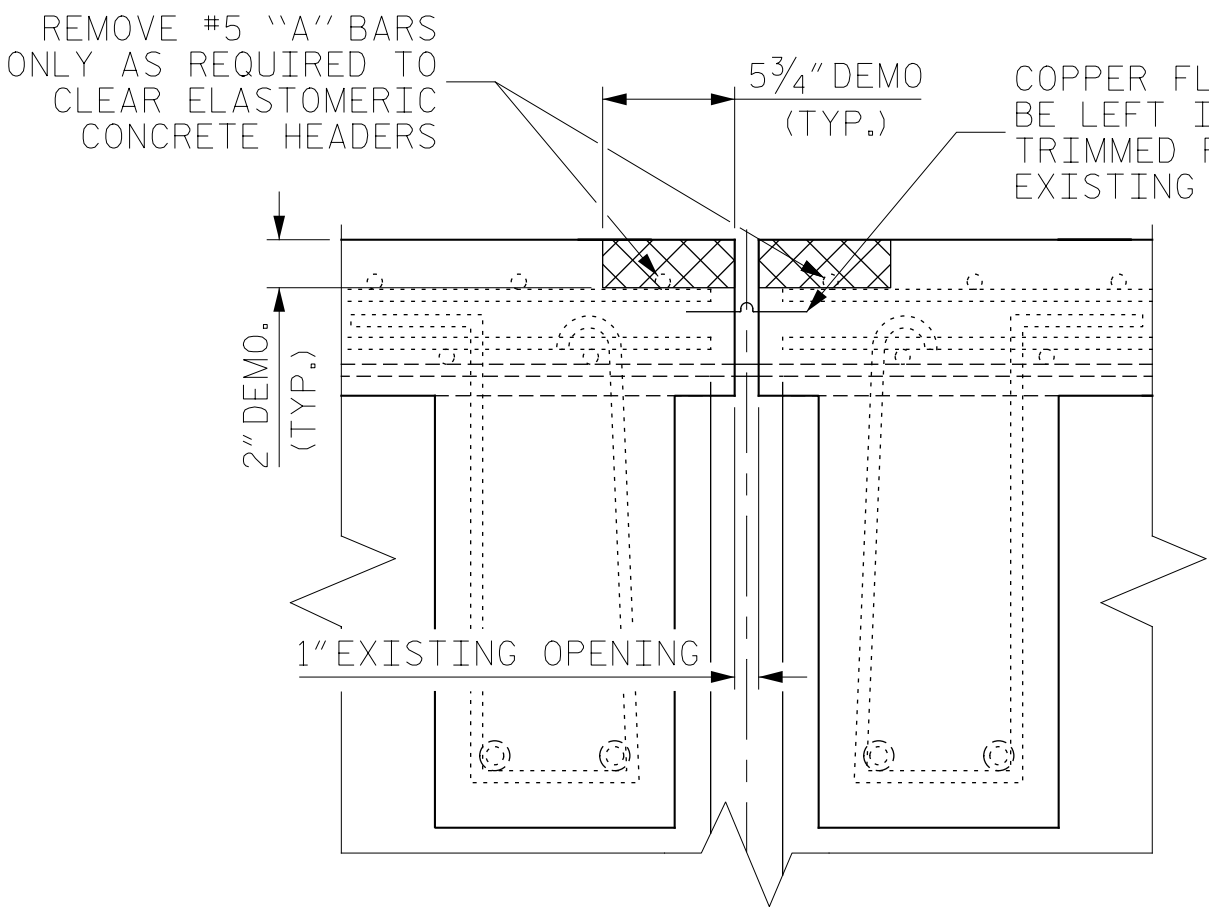
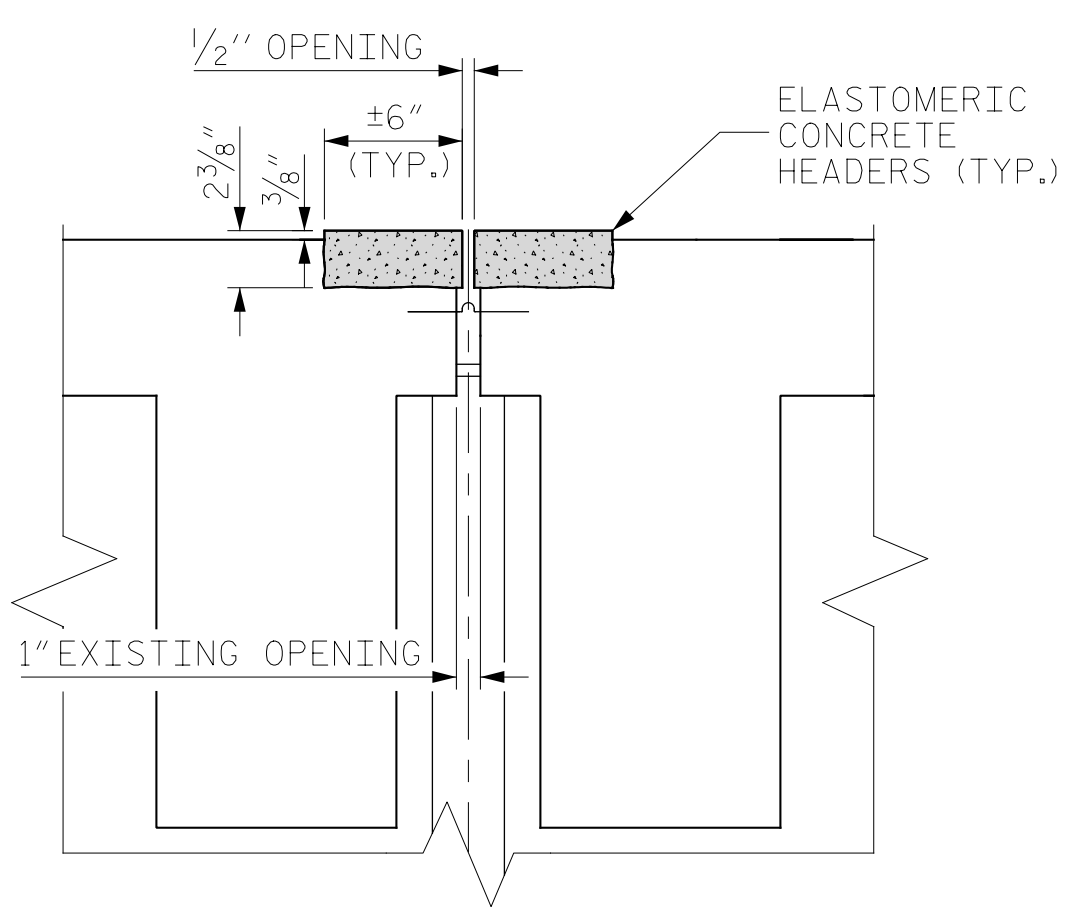


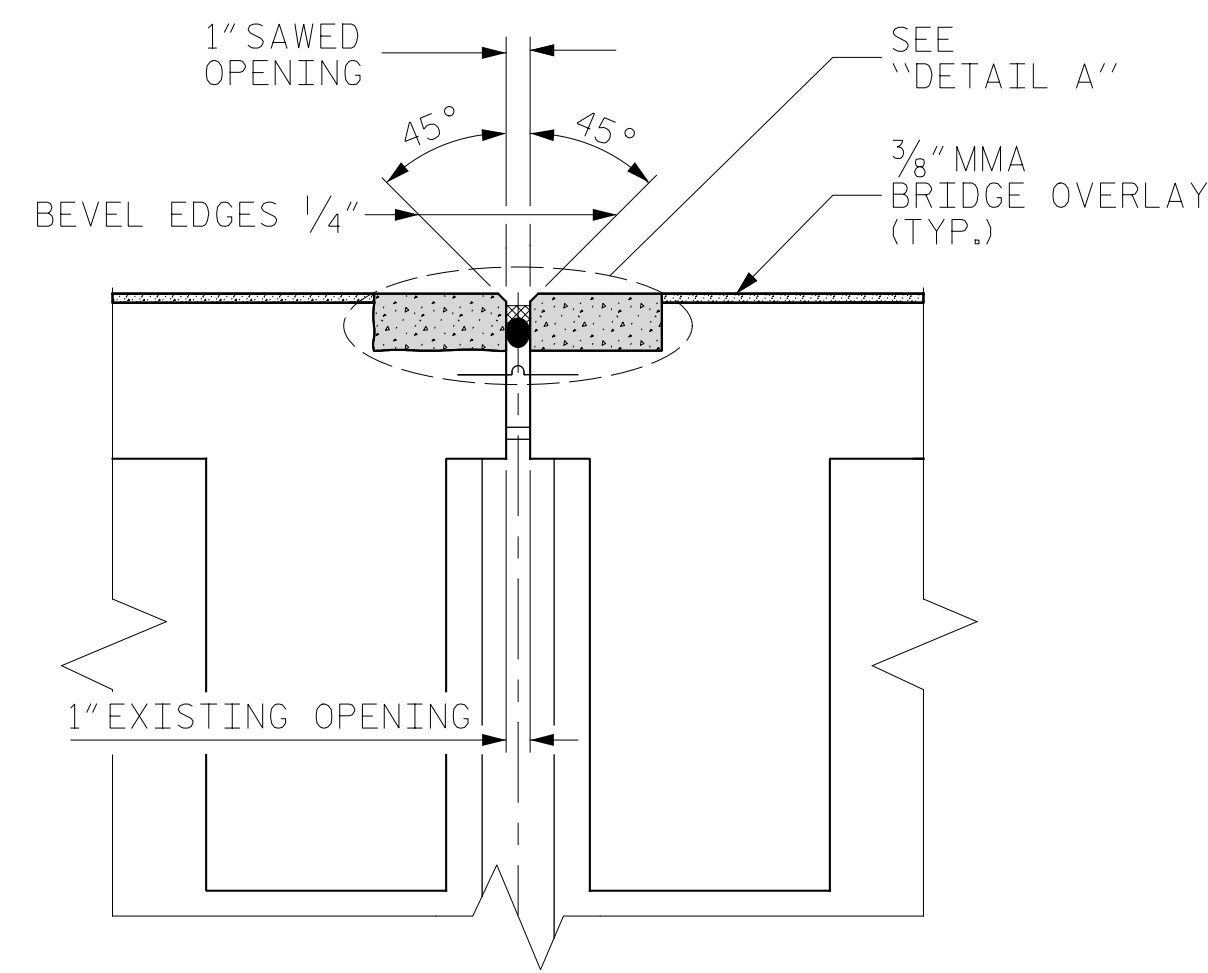
EXISTING



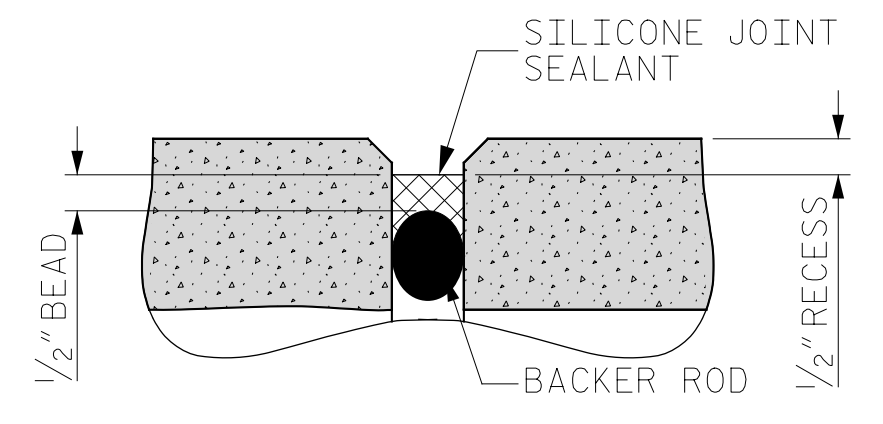
MINIMUM EXISTING JOINT DEMOLITION



PROPOSED PRE-SAWED JOINT



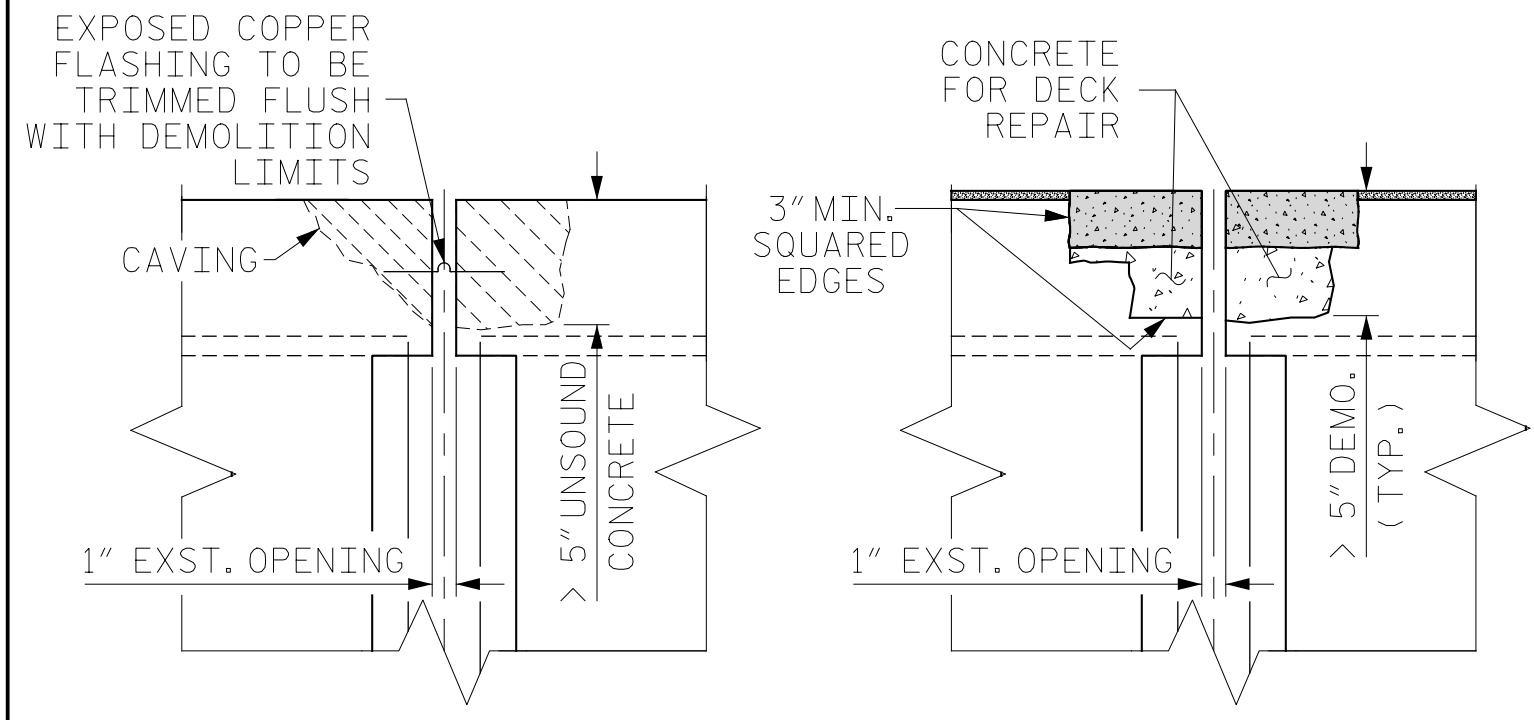
PROPOSED JOINT



DETAIL A

NOTES:
FOR SILICONE JOINT SEALANT, SEE SPECIAL PROVISIONS.
THE INSTALLED SILICONE JOINT SEALS SHALL BE WATERTIGHT.
THE CONTRACTOR WILL NOT BE PERMITTED TO FORM THE JOINT FOR THE SILICONE JOINT SEAL IN LIEU OF SAWING THE JOINT.

SECTION A-A



JOINT DEMOLITION FOR CAVING OR UNSOUND CONCRETE
REPAIRED JOINT

CONCRETE FOR DECK REPAIR DETAIL

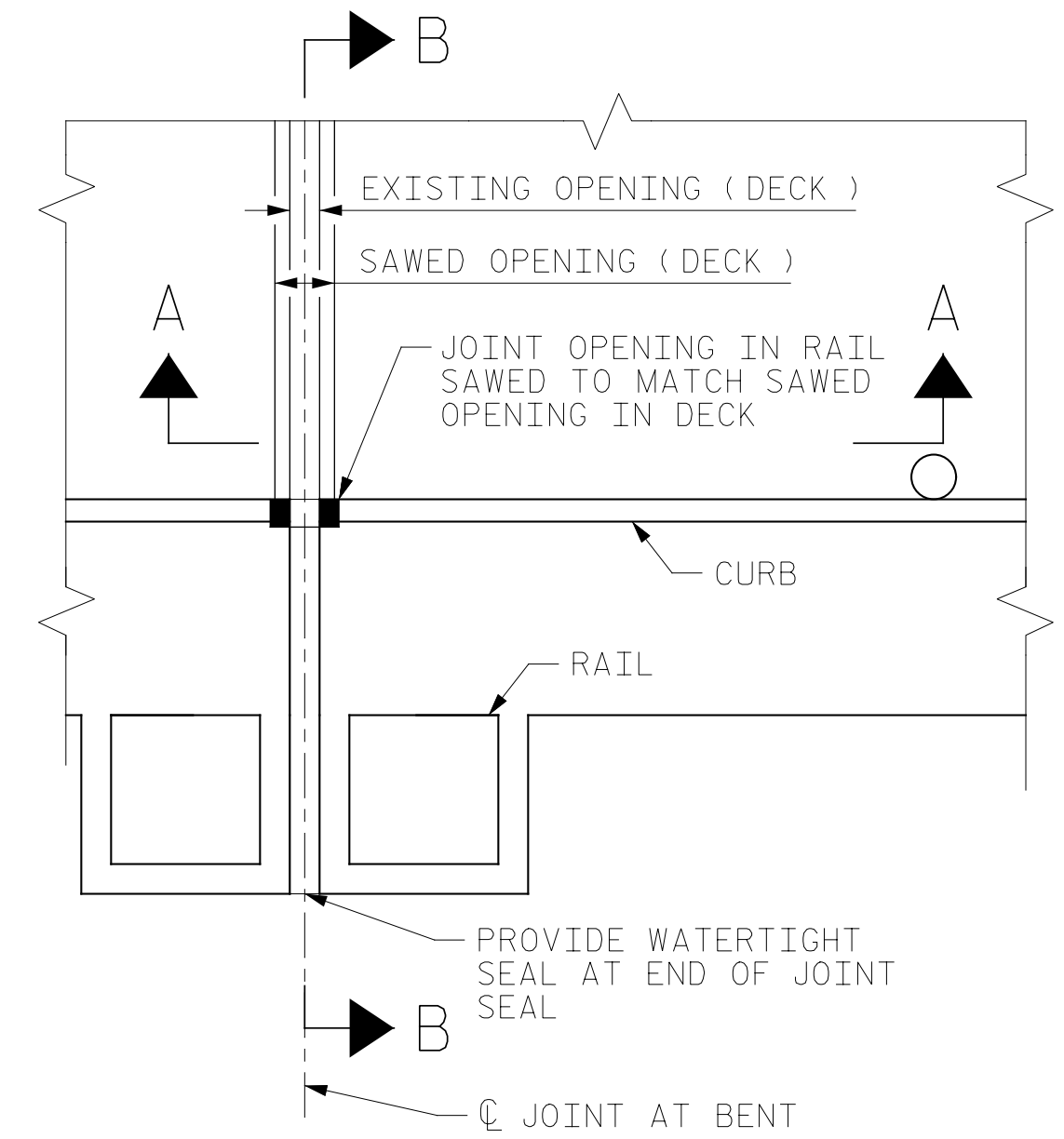
(FOR REPAIR OF JOINTS WITH DEEP EXCAVATION OR SLOPING EDGES)

NOTE: RETAIN ALL EXISTING REINFORCING STEEL BARS CUT OR DAMAGED DURING DEMOLITION SHALL BE REPAIRED BY THE CONTRACTOR AT NO COST TO THE DEPARTMENT PRIOR TO PLACING REPAIR CONCRETE OR ELASTOMERIC CONCRETE.

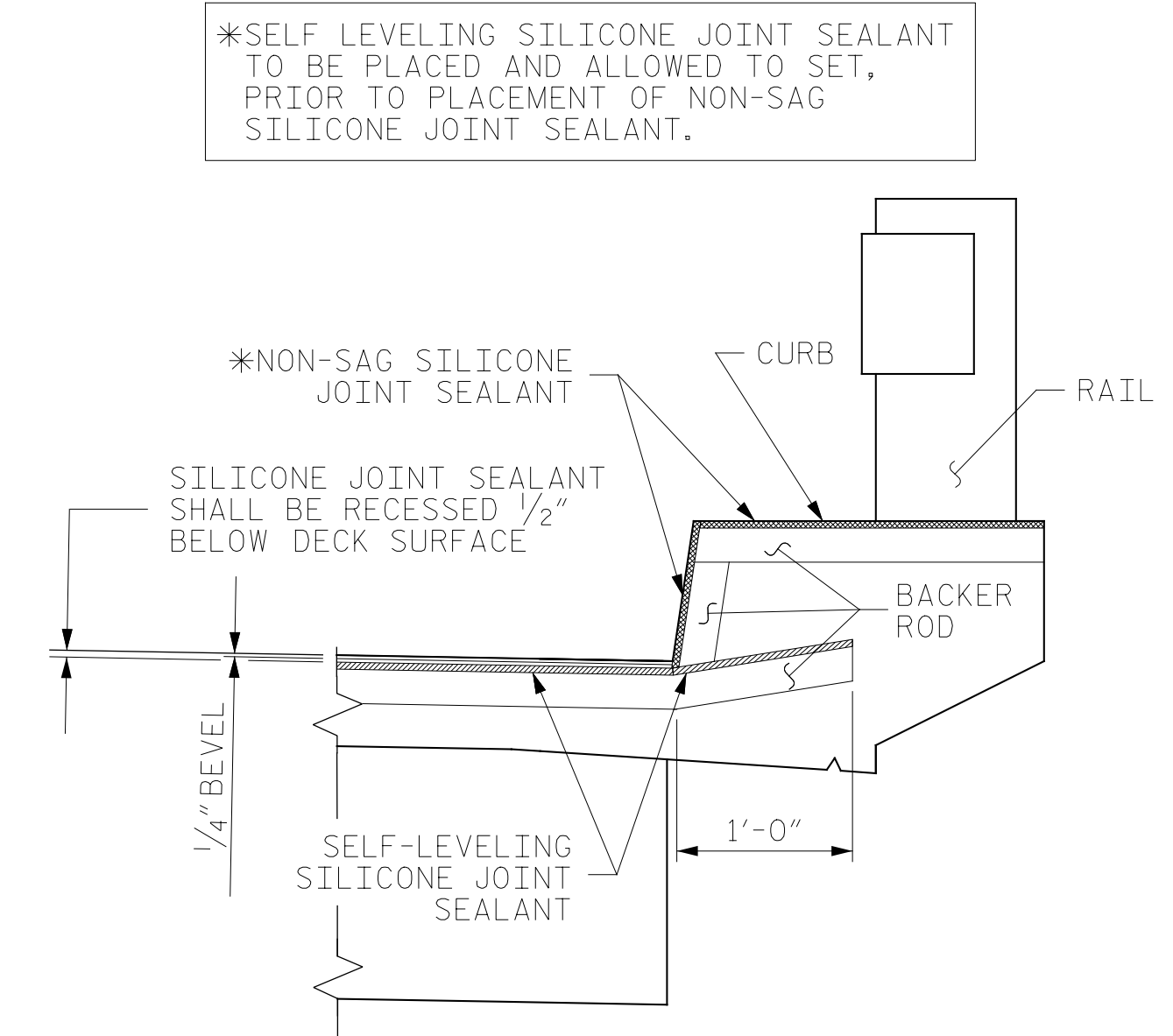
FOR BRIDGE JOINT DEMOLITION EXCAVATE TO SOUND CONCRETE. IF BRIDGE JOINT DEMOLITION EXTENDS MORE THAN 2" BELOW THE BOTTOM OF THE PLANNED ELASTOMERIC CONCRETE HEADER OR IF CAVING OF CONCRETE OCCURS SUCH THAT A LEVEL SURFACE CANNOT BE ACHIEVED, AS SHOWN, APPROVED REPAIR CONCRETE SHALL BE PLACED IN THE EXCAVATED AREA TO THE SURFACE OF THE DECK

DO NOT INSTALL ELASTOMERIC CONCRETE HEADER UNTIL THE REPAIR CONCRETE HAS ACHIEVED DESIGN STRENGTH AND IS FULLY CURED (REFER TO MANUFACTURER SPECIFICATIONS FOR STRENGTH AND CURE).

THE CONTRACTOR SHALL HAVE ON HAND REPAIR CONCRETE AND MIXING EQUIPMENT PRIOR TO BEGINNING BRIDGE JOINT DEMOLITION.



PLAN



SECTION B-B

*SELF LEVELING SILICONE JOINT SEALANT TO BE PLACED AND ALLOWED TO SET, PRIOR TO PLACEMENT OF NON-SAG SILICONE JOINT SEALANT.

*NON-SAG SILICONE JOINT SEALANT

SILICONE JOINT SEALANT SHALL BE RECESSED 1/2" BELOW DECK SURFACE

JOINT SEAL DETAILS AT BENT

PROJECT NO. HB-0017
DARE COUNTY
BRIDGE NO. 270009

BILL OF MATERIAL PER JOINT (134 JOINTS) & TOTAL		
IDENTIFYING BENT LOCATIONS: 3, 5, 7, 11, 13, 15, 19, 21, 23, 27, 29, 31, 35, 37, 39, 43, 45, 47, 51, 53, 55, 59, 61, 63, 67, 69, 71, 75, 77, 79, 83, 85, 87, 91, 93, 95, 99, 101, 103, 107, 109, 111, 115, 117, 119, 122, 123, 124, 125, 126, 127, 128, 129, 130, 131, 132, 133, 134, 135, 136, 139, 140, 141, 142, 143, 144, 145, 146, 147, 148, 149, 150, 151, 152, 153, 156, 158, 160, 164, 166, 168, 172, 174, 176, 180, 182, 184, 188, 190, 192, 196, 198, 202, 204, 206, 210, 212, 214, 218, 220, 222, 226, 228, 230, 234, 236, 238, 242, 244, 246, 250, 252, 254, 258, 260, 262, 266, 268, 270, 274, 276, 278, 282, 284, 286, 290, 292, 294, 298, 300, 302, 306, 308, 310		
ELASTOMERIC CONCRETE FOR PRESERVATION	4.6 CF PER BENT	TOTAL: 616.4 CF
SILICONE JOINT SEALANT	29.9 LF PER BENT	TOTAL: 4006.6 LF

STATE OF NORTH CAROLINA
DEPARTMENT OF TRANSPORTATION
RALEIGH

JOINT DETAILS



DocuSigned by:
Eric B. Nelson
7/14/2022



DOCUMENT NOT CONSIDERED FINAL UNLESS ALL SIGNATURES COMPLETED

REVISIONS						SHEET NO.
NO.	BY:	DATE:	NO.	BY:	DATE:	S-112
1			3			TOTAL SHEETS
2			4			355

DRAWN BY: M. SPENCER DATE: 04/2019
CHECKED BY: R. NELSON DATE: 04/2019