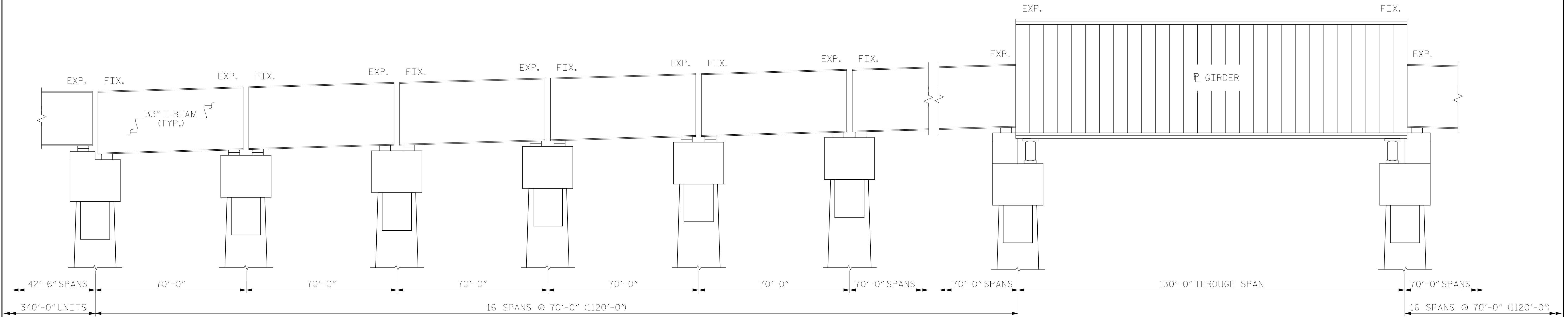


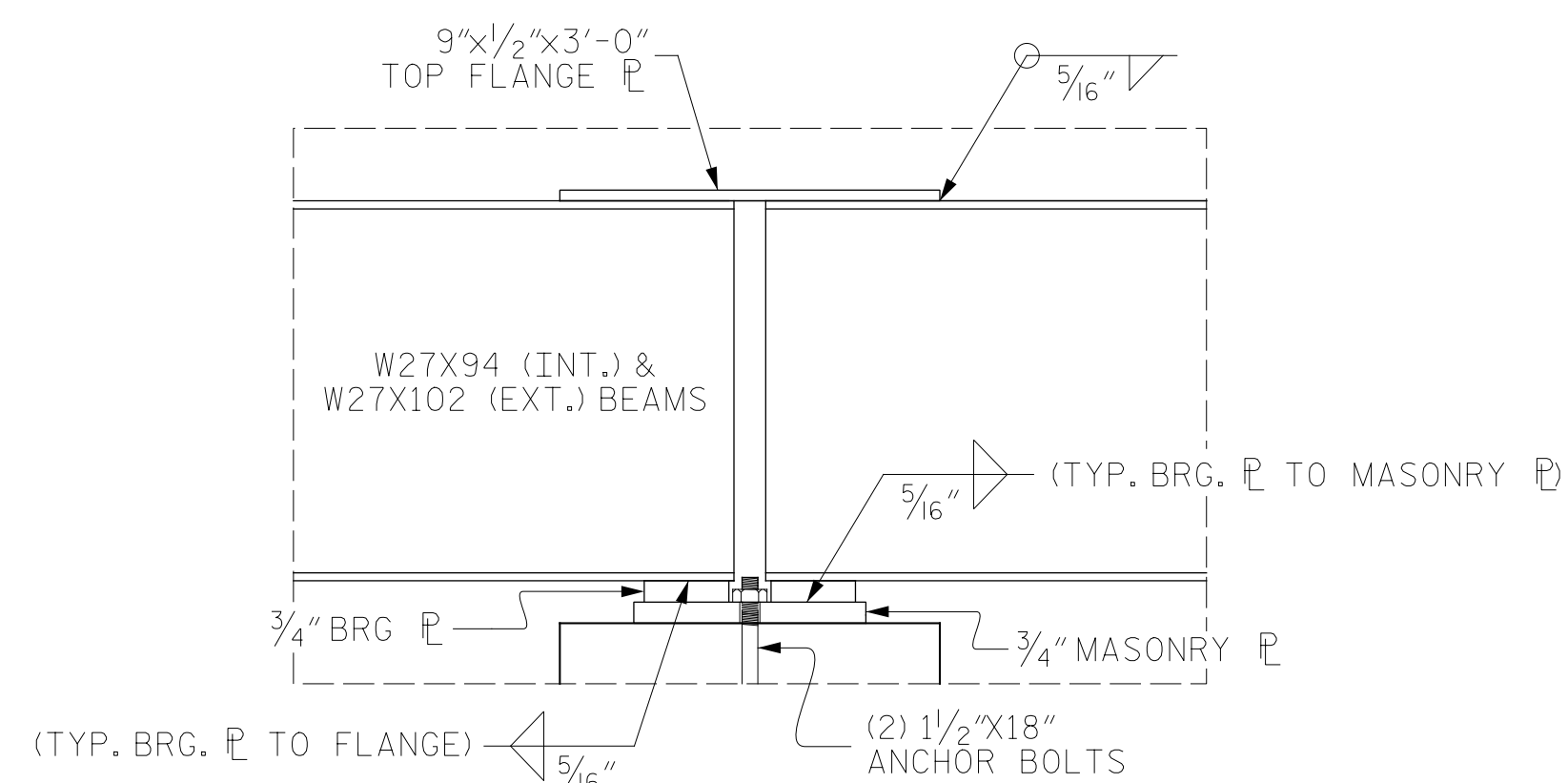
EXISTING TYPICAL LOW LEVEL SPAN UNIT ELEVATION

(TYPICAL 8 SPAN CONTINUOUS UNIT FOR SPANS 2 THRU 121 (WEST APPROACH) AND 155 THRU 312 (EAST APPROACH). UNITS FOR EAST APPROACH INCLUDE 2 BRACED BENTS AND A 6 SPAN UNIT FOR SPANS 195 THRU 200.)



EXISTING HIGH LEVEL SPAN UNIT ELEVATION

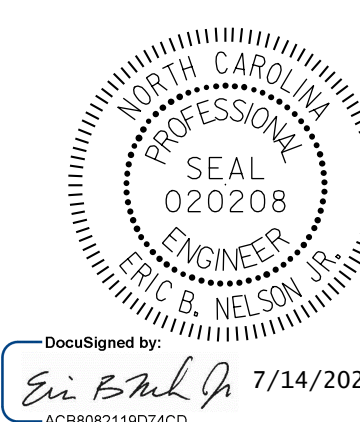
(TYPICAL SIMPLE SPANS)



DETAIL A

(EXISTING CONDITION-FOR INFORMATION ONLY)

PROJECT NO. HB-0017
DARE COUNTY
 BRIDGE NO. 270009



STATE OF NORTH CAROLINA
 DEPARTMENT OF TRANSPORTATION
 RALEIGH

TYPICAL
 BRIDGE SPAN UNITS

DRAWN BY: M. SPENCER DATE: 03/2019
 CHECKED BY: R. NELSON DATE: 03/2019



DOCUMENT NOT CONSIDERED
 FINAL UNLESS ALL
 SIGNATURES COMPLETED

REVISIONS						SHEET NO.
NO.	BY:	DATE:	NO.	BY:	DATE:	TOTAL SHEETS
1			3			S-17
2			4			355